

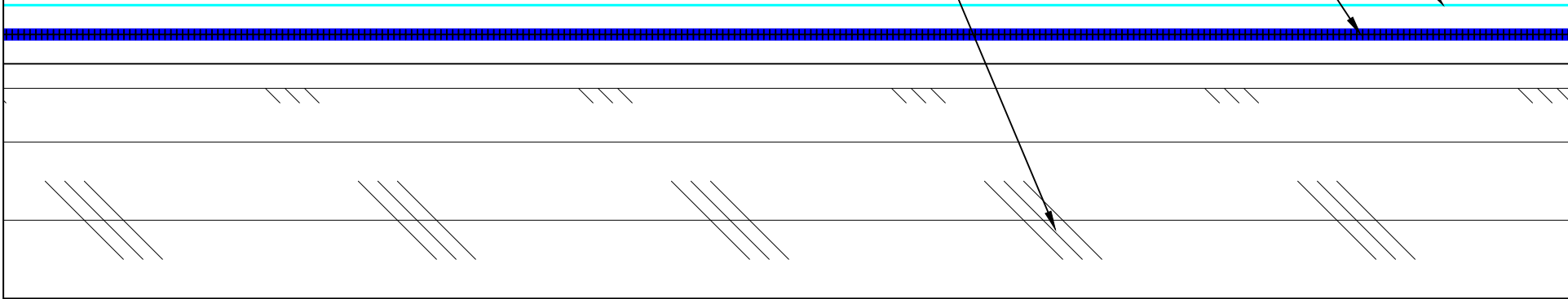
System Overview

Deck:	Approved Existing Smooth Surfaced Roof
Base Sheet:	G2 Base Sheet
Insulation / Cover:	-
Asphalt Emulsion:	30 Gal
Fiberglass Roving:	16 Lbs
Coating:	CA Title 24 Cool Roof Reflective Coating (3 Gal. / 100 Sq.Ft.)

CA TITLE 24 COOL ROOF REFLECTIVE COATING (3 GAL. / 100 SQ.FT.)

R-16-30-A WEATHERWELD APPLICATION
 30 GAL / 100 SQ. FT. ASPHALT EMULSION
 16 LBS / 100 SQ. FT. FIBERGLASS ROVING

EXISTING SMOOTH SURFACED ROOF



SYSTEM:
R-16-30-A
 Composite Membrane Over
 Approved Existing Smooth
 Surfaced Roof

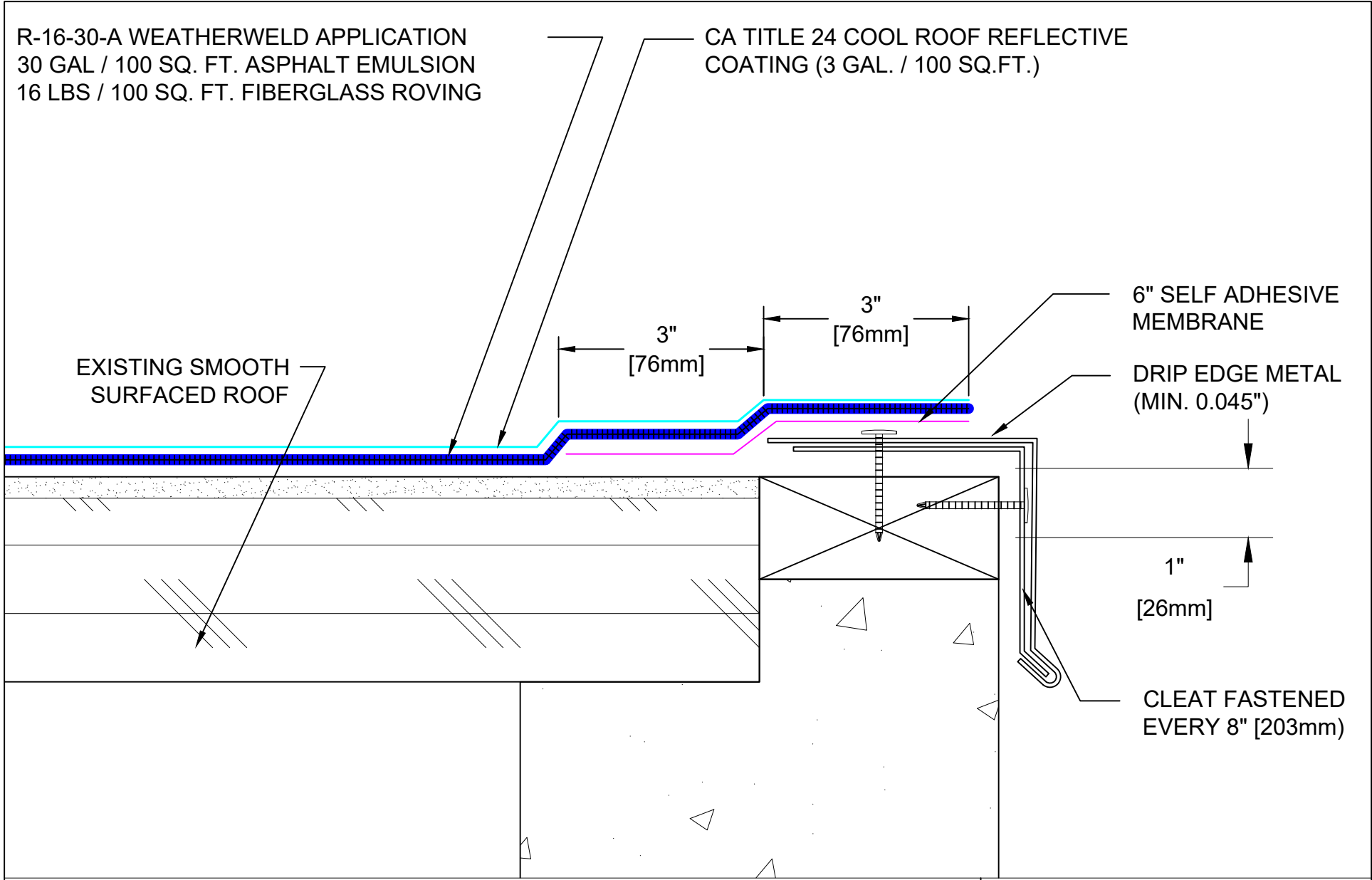
WEATHERWELD
A DIVISION OF LIQUIFORM TECHNOLOGIES, INC.


9757 7th Street, Suite 803
 Rancho Cucamonga, CA 91730-5297
 (888) 440-3224 | www.weatherweld.com

DRAWING TITLE: **SYSTEM OVERVIEW**

DETAIL NUMBER: **101**

PREPARED FOR:			
DRAWN BY: R. Weygant	PROJECT:		
APPROVED BY: M. Jones	INSTALLED BY:	DATE: 1/24/24	SCALE: NTS



SYSTEM: R-16-30-A Composite Membrane Over Approved Existing Smooth Surfaced Roof		 A DIVISION OF LIQUIFORM TECHNOLOGIES, INC. 9757 7 th Street, Suite 803 Rancho Cucamonga, CA 91730-5297 (888) 440-3224 www.weatherweld.com		PREPARED FOR:	
DRAWING TITLE: EDGE FLASHING		DETAIL NUMBER: 201		DRAWN BY: R. Weygant	
				PROJECT:	
				APPROVED BY: M. Jones	
				INSTALLED BY: TBD	
				DATE: 1/24/24	
				SCALE: 6" = 1'-0"	

COPING CAP

EXTERIOR GRADE NAILER

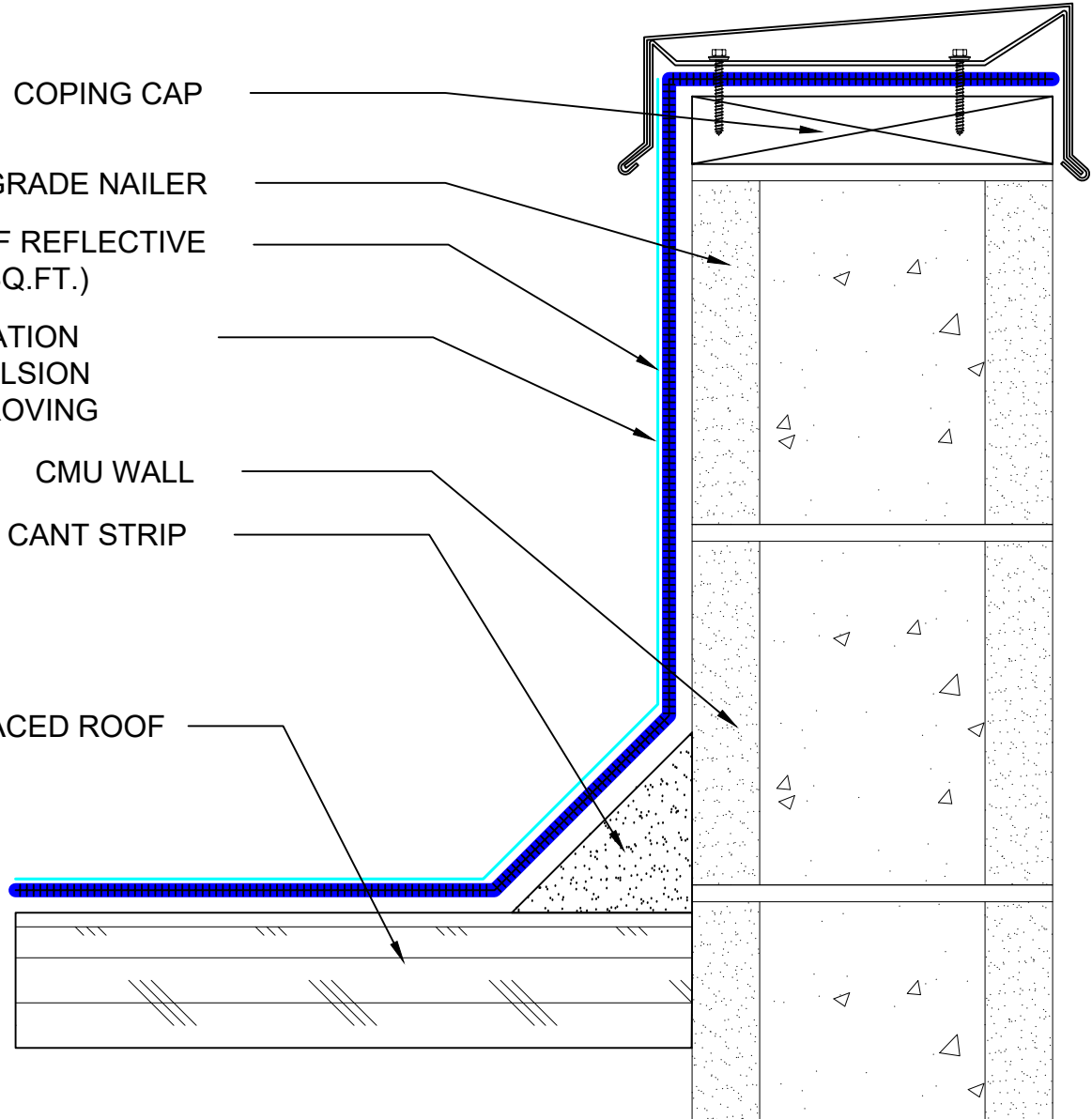
CA TITLE 24 COOL ROOF REFLECTIVE COATING (3 GAL. / 100 SQ.FT.)

R-16-30-A WEATHERWELD APPLICATION
30 GAL / 100 SQ. FT. ASPHALT EMULSION
16 LBS / 100 SQ. FT. FIBERGLASS ROVING

CMU WALL

4" CANT STRIP

EXISTING SMOOTH SURFACED ROOF



SYSTEM:

R-16-30-A

Composite Membrane Over
Approved Existing Smooth
Surfaced Roof

WEATHERWELD

A DIVISION OF LIQUIFORM TECHNOLOGIES, INC.

9757 7th Street, Suite 803
Rancho Cucamonga, CA 91730-5297
(888) 440-3224 | www.weatherweld.com

DRAWING TITLE:

COPING CAP FLASHING AT CMU WALL

DETAIL NUMBER:

301

PREPARED FOR:

DRAWN BY:

R. Weygant

PROJECT:

APPROVED BY:
M. Jones

INSTALLED BY:
TBD

DATE:
1/24/24

SCALE:
3" = 1'-0"

SURFACE MOUNTED TWO PIECE REGLET

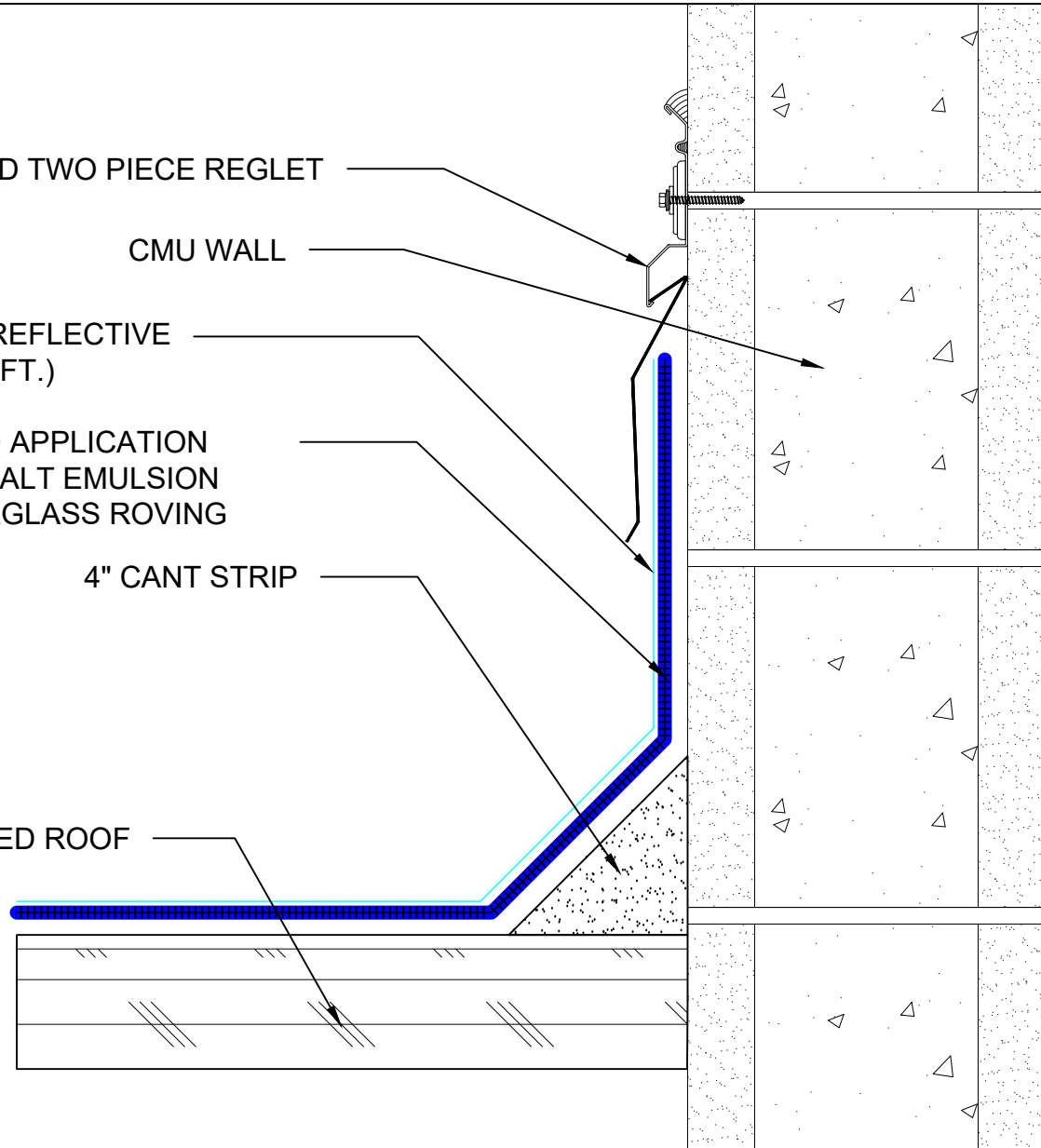
CMU WALL

CA TITLE 24 COOL ROOF REFLECTIVE COATING (3 GAL. / 100 SQ.FT.)

R-16-30-A WEATHERWELD APPLICATION
30 GAL / 100 SQ. FT. ASPHALT EMULSION
16 LBS / 100 SQ. FT. FIBERGLASS ROVING

4" CANT STRIP

EXISTING SMOOTH SURFACED ROOF



SYSTEM:

R-16-30-A

Composite Membrane Over
Approved Existing Smooth
Surfaced Roof

WEATHERWELD

A DIVISION OF LIQUIFORM TECHNOLOGIES, INC.

9757 7th Street, Suite 803
Rancho Cucamonga, CA 91730-5297
(888) 440-3224 | www.weatherweld.com

DRAWING TITLE:

SURFACE MOUNTED REGLET AT CMU WALL

DETAIL NUMBER:

302

PREPARED FOR:

DRAWN BY:
R. Weygant

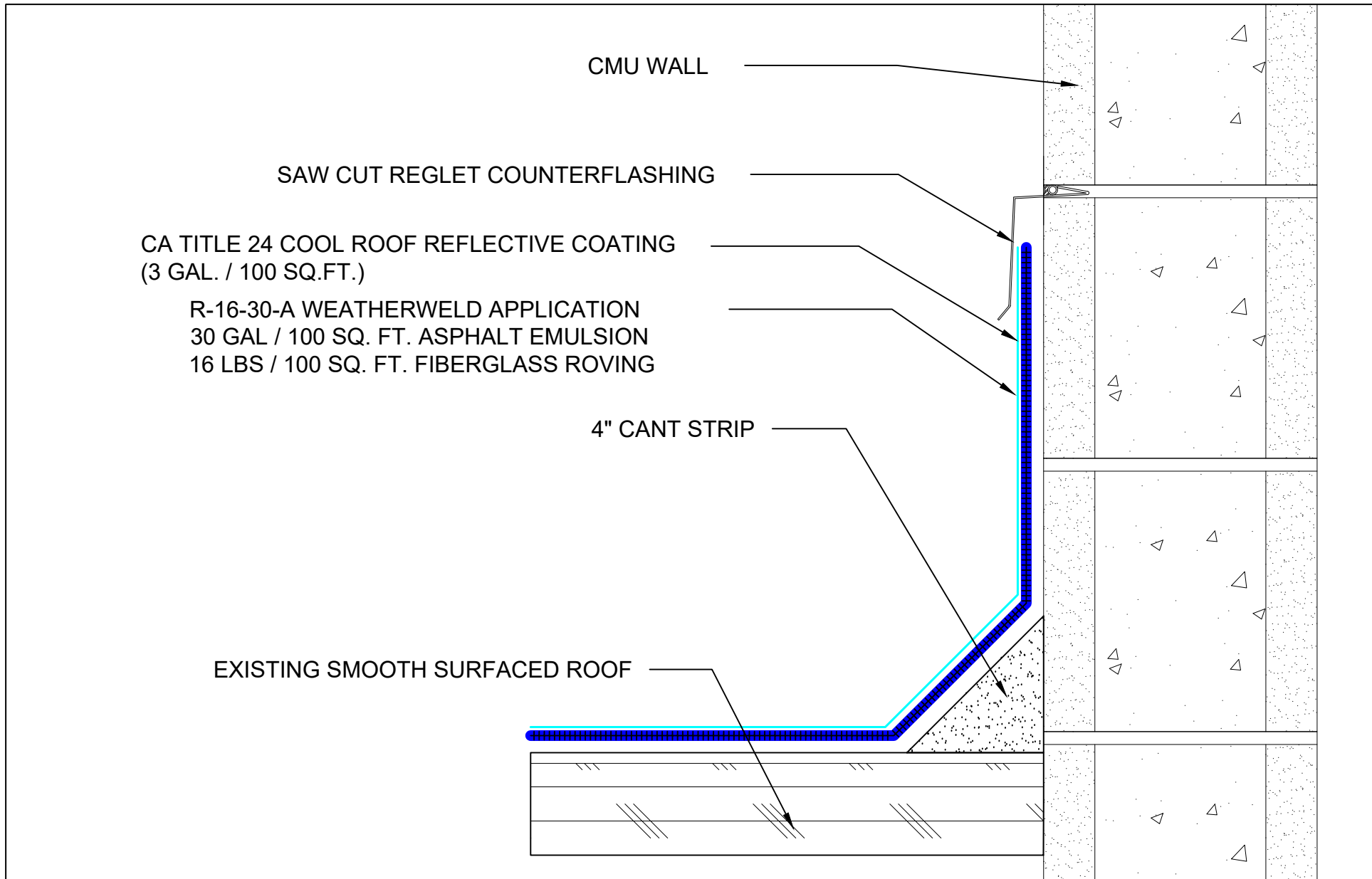
PROJECT:


APPROVED BY:
M. Jones

INSTALLED BY:
TBD

DATE:
1/24/24

SCALE:
3" = 1'-0"



SYSTEM: R-16-30-A Composite Membrane Over Approved Existing Smooth Surfaced Roof	 <small>A DIVISION OF LIQUIFORM TECHNOLOGIES, INC.</small>	9757 7 th Street, Suite 803 Rancho Cucamonga, CA 91730-5297 (888) 440-3224 www.weatherweld.com		PREPARED FOR:		
		DRAWING TITLE: SAW CUT REGLET AT CMU WALL	DETAIL NUMBER: 303	DRAWN BY: R. Weygant	PROJECT:	
		APPROVED BY: M. Jones	INSTALLED BY: TBD	DATE: 1/24/24	SCALE: 3" = 1'-0"	

CA TITLE 24 COOL ROOF REFLECTIVE COATING (3 GAL. / 100 SQ.FT.)

R-16-30-A WEATHERWELD APPLICATION
30 GAL / 100 SQ. FT. ASPHALT EMULSION
16 LBS / 100 SQ. FT. FIBERGLASS ROVING

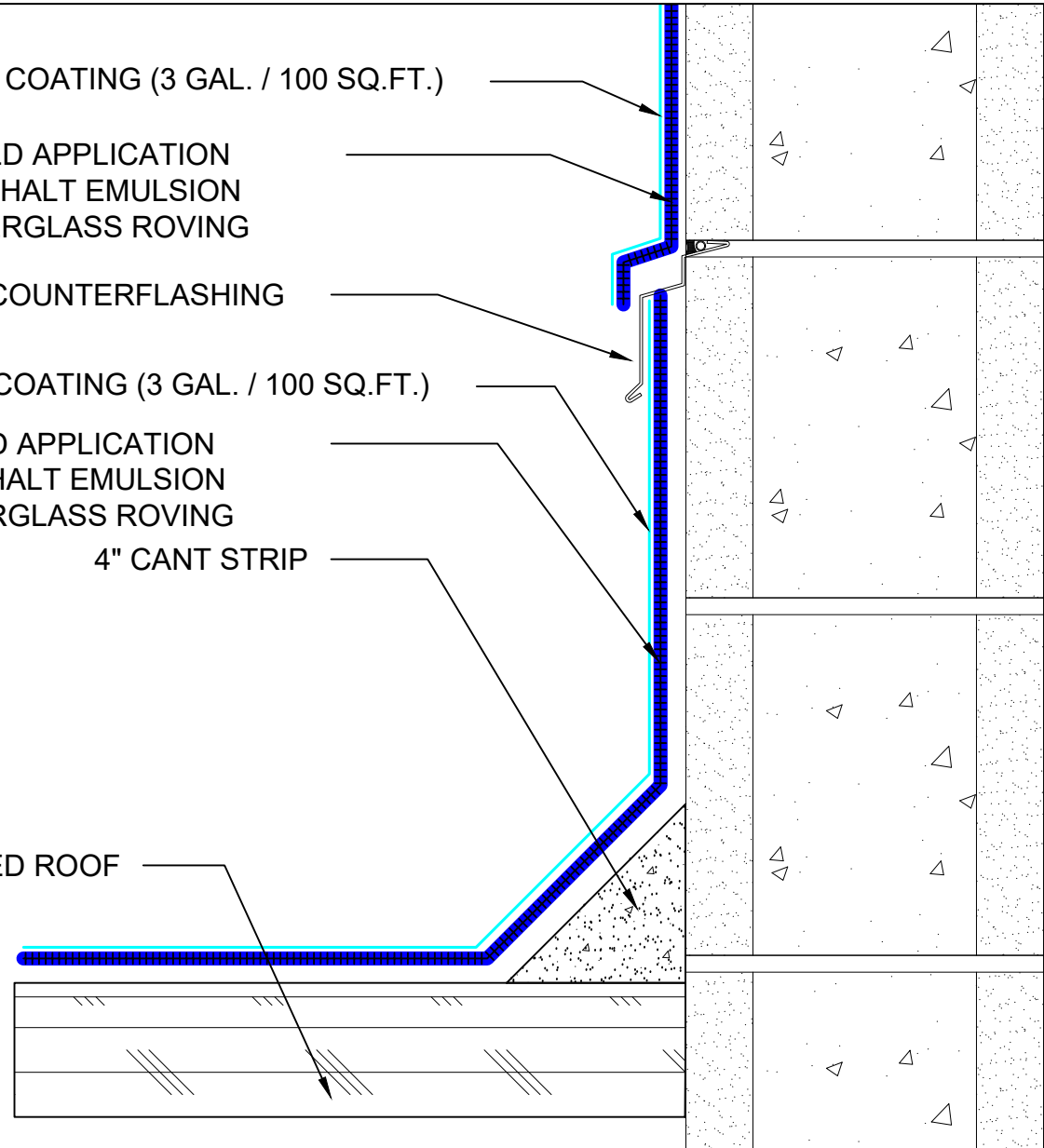
EXISTING COUNTERFLASHING

CA TITLE 24 COOL ROOF REFLECTIVE COATING (3 GAL. / 100 SQ.FT.)

R-16-30-A WEATHERWELD APPLICATION
30 GAL / 100 SQ. FT. ASPHALT EMULSION
16 LBS / 100 SQ. FT. FIBERGLASS ROVING

4" CANT STRIP

EXISTING SMOOTH SURFACED ROOF



SYSTEM:

R-16-30-A

Composite Membrane Over
Approved Existing Smooth
Surfaced Roof

WEATHERWELD

A DIVISION OF LIQUIFORM TECHNOLOGIES, INC.

9757 7th Street, Suite 803
Rancho Cucamonga, CA 91730-5297
(888) 440-3224 | www.weatherweld.com

DRAWING TITLE:

**CMU WALL WITH EXISTING REGLET
COUNTERFLASHING**

DETAIL NUMBER:

304

PREPARED FOR:

DRAWN BY:
R. Weygant

PROJECT:

APPROVED BY:
M. Jones

INSTALLED BY:
TBD

DATE:
1/24/24

SCALE:
3" = 1'-0"

CA TITLE 24 COOL ROOF REFLECTIVE COATING (3 GAL. / 100 SQ.FT.)

R-16-30-A WEATHERWELD APPLICATION
30 GAL / 100 SQ. FT. ASPHALT EMULSION
16 LBS / 100 SQ. FT. FIBERGLASS ROVING

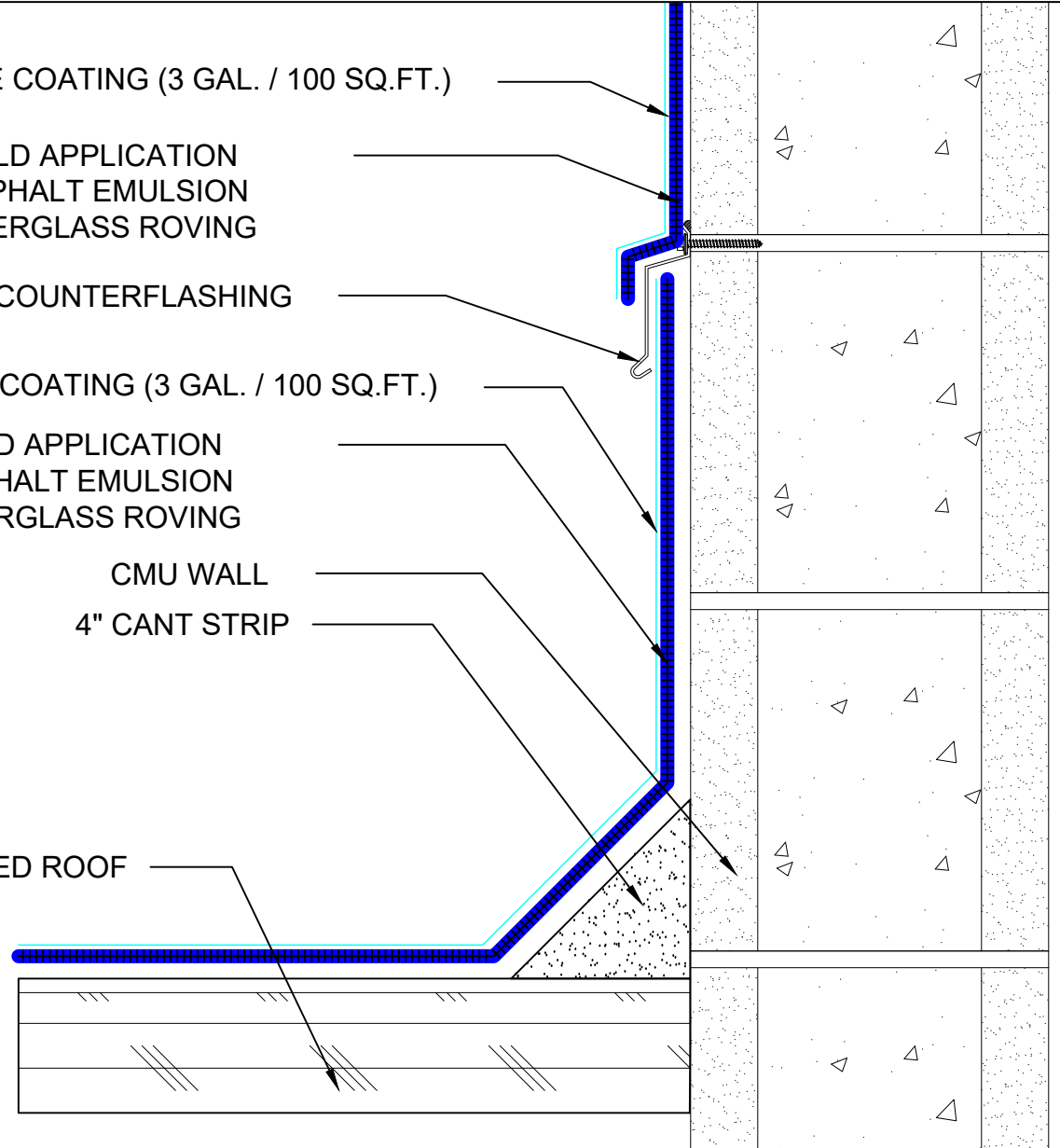
EXISTING COUNTERFLASHING

CA TITLE 24 COOL ROOF REFLECTIVE COATING (3 GAL. / 100 SQ.FT.)

R-16-30-A WEATHERWELD APPLICATION
30 GAL / 100 SQ. FT. ASPHALT EMULSION
16 LBS / 100 SQ. FT. FIBERGLASS ROVING

CMU WALL
4" CANT STRIP

EXISTING SMOOTH SURFACED ROOF



SYSTEM:

R-16-30-A

Composite Membrane Over
Approved Existing Smooth
Surfaced Roof

WEATHERWELD

A DIVISION OF LIQUIFORM TECHNOLOGIES, INC.

9757 7th Street, Suite 803
Rancho Cucamonga, CA 91730-5297
(888) 440-3224 | www.weatherweld.com

DRAWING TITLE:

**CMU WALL WITH EXISTING SURFACE
MOUNTED COUNTERFLASHING**

DETAIL NUMBER:

305

PREPARED FOR:

DRAWN BY:
R. Weygant

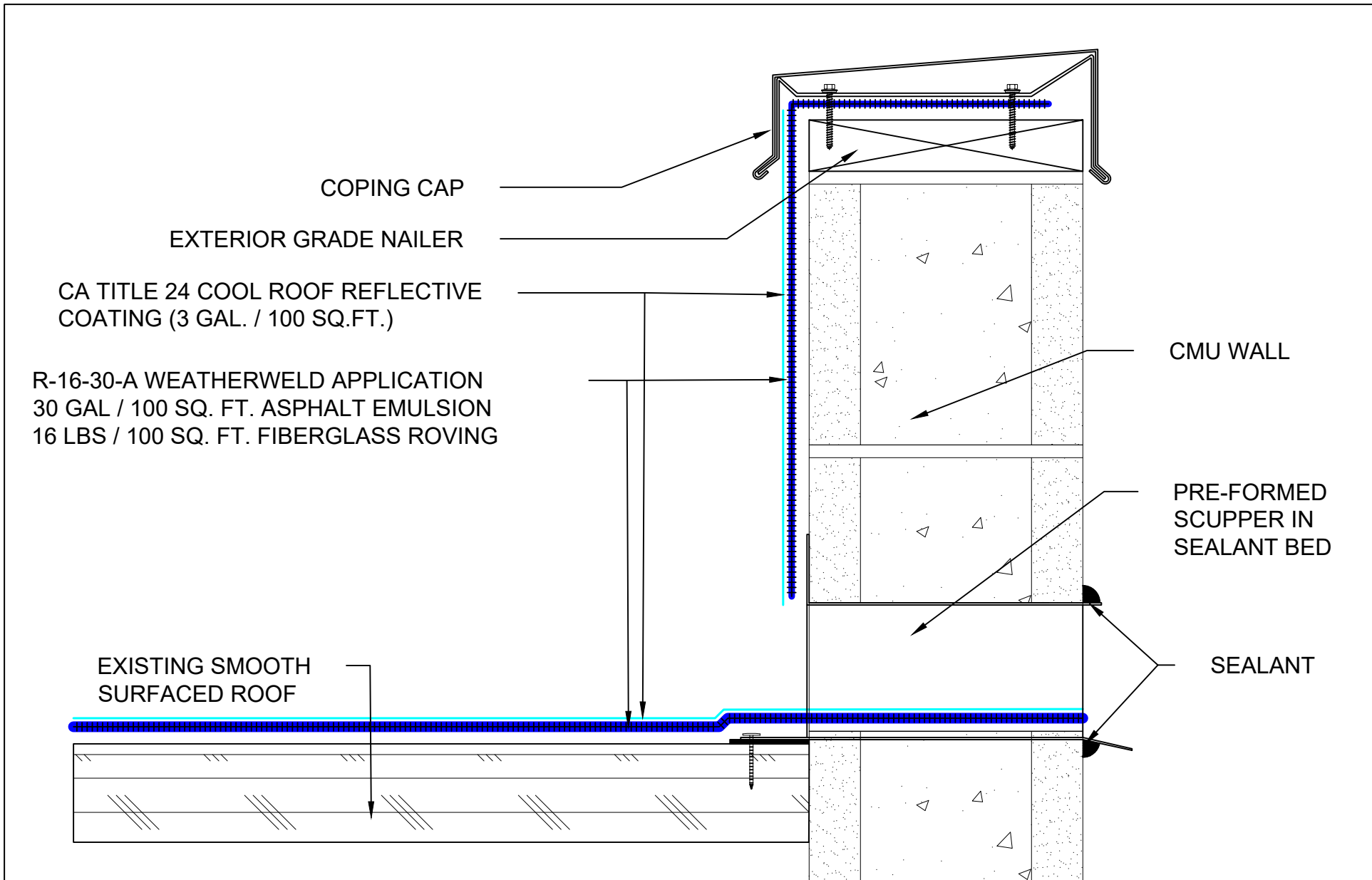
PROJECT:

APPROVED BY:
M. Jones

INSTALLED BY:
TBD

DATE:
1/24/24

SCALE:
3" = 1'-0"



COPING CAP

EXTERIOR GRADE NAILER

CA TITLE 24 COOL ROOF REFLECTIVE COATING (3 GAL. / 100 SQ.FT.)

R-16-30-A WEATHERWELD APPLICATION
 30 GAL / 100 SQ. FT. ASPHALT EMULSION
 16 LBS / 100 SQ. FT. FIBERGLASS ROVING

EXISTING SMOOTH SURFACED ROOF

CMU WALL

PRE-FORMED SCUPPER IN SEALANT BED

SEALANT

SYSTEM:
R-16-30-A
 Composite Membrane Over
 Approved Existing Smooth
 Surfaced Roof



9757 7th Street, Suite 803
 Rancho Cucamonga, CA 91730-5297
 (888) 440-3224 | www.weatherweld.com

PREPARED FOR:

DRAWING TITLE:
THRU WALL SCUPPER FLASHING AT CMU WALL

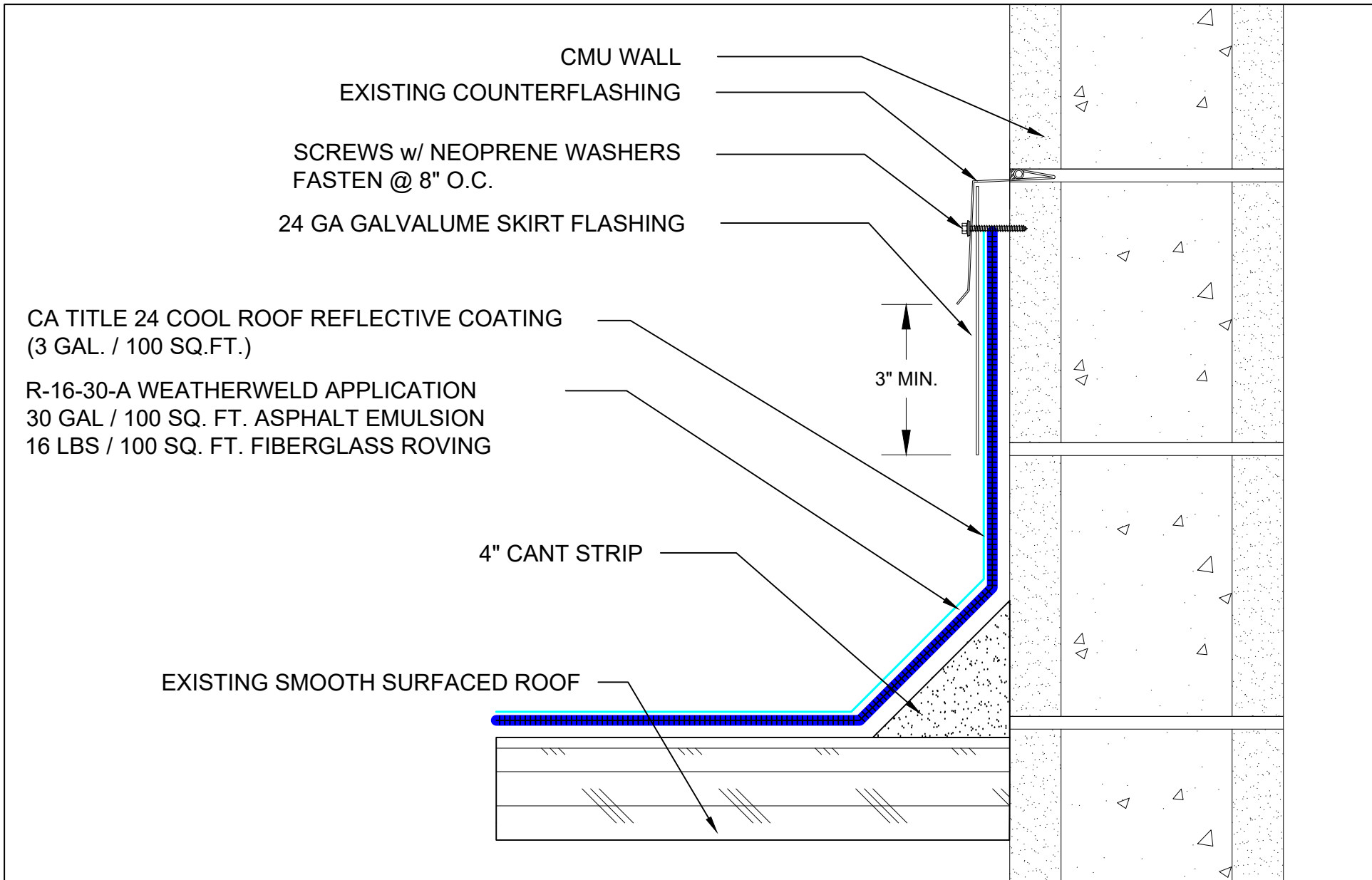
DETAIL NUMBER:
306

DRAWN BY:
R. Weygant
 APPROVED BY:
M. Jones

PROJECT:
 INSTALLED BY:
TBD

DATE:
1/24/24

SCALE:
3" = 1'-0"



SYSTEM:
R-16-30-A
Composite Membrane Over
Approved Existing Smooth
Surfaced Roof

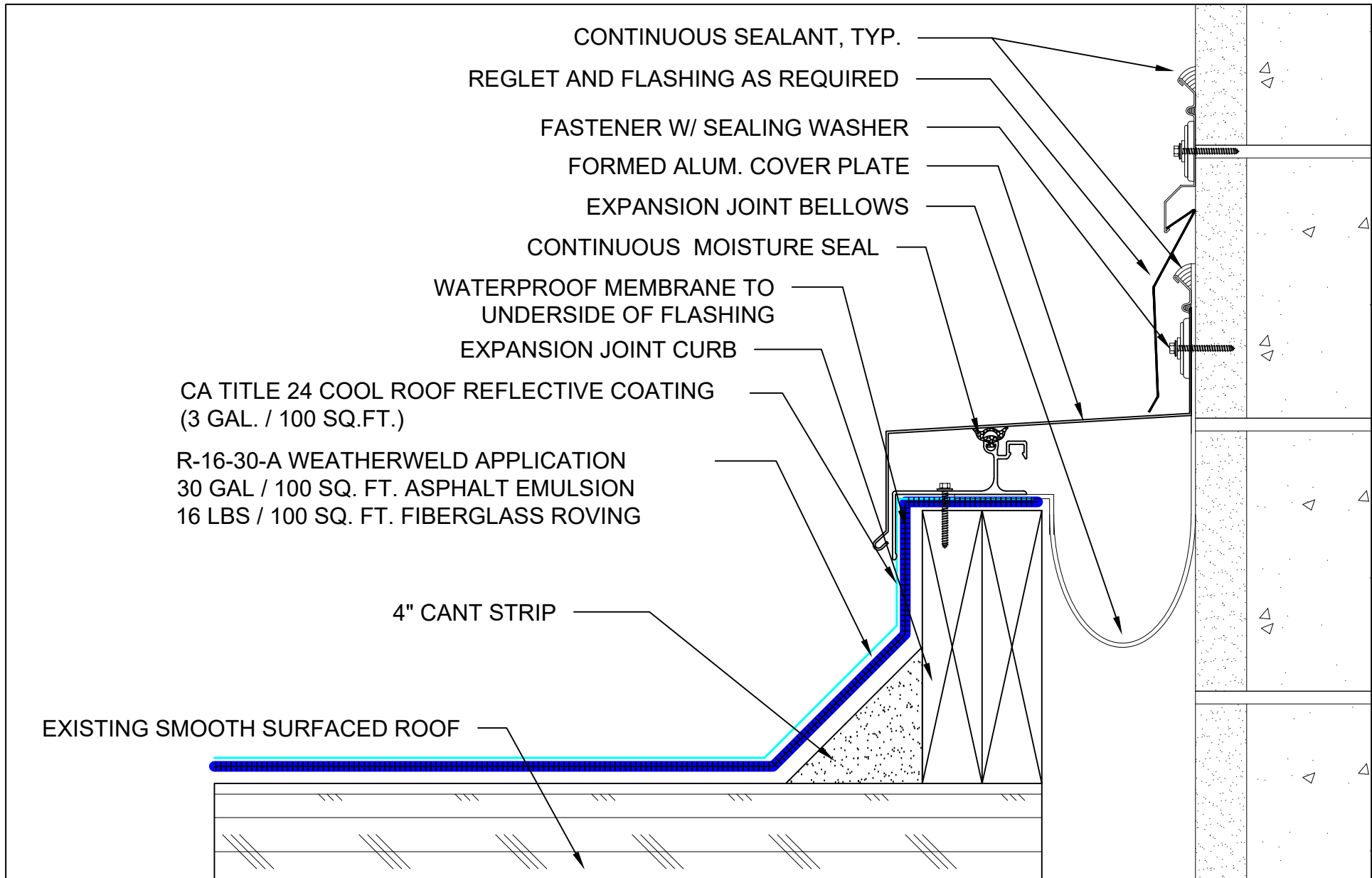
WEATHERWELD
A DIVISION OF LIQUIFORM TECHNOLOGIES, INC.


9757 7th Street, Suite 803
Rancho Cucamonga, CA 91730-5297
(888) 440-3224 | www.weatherweld.com

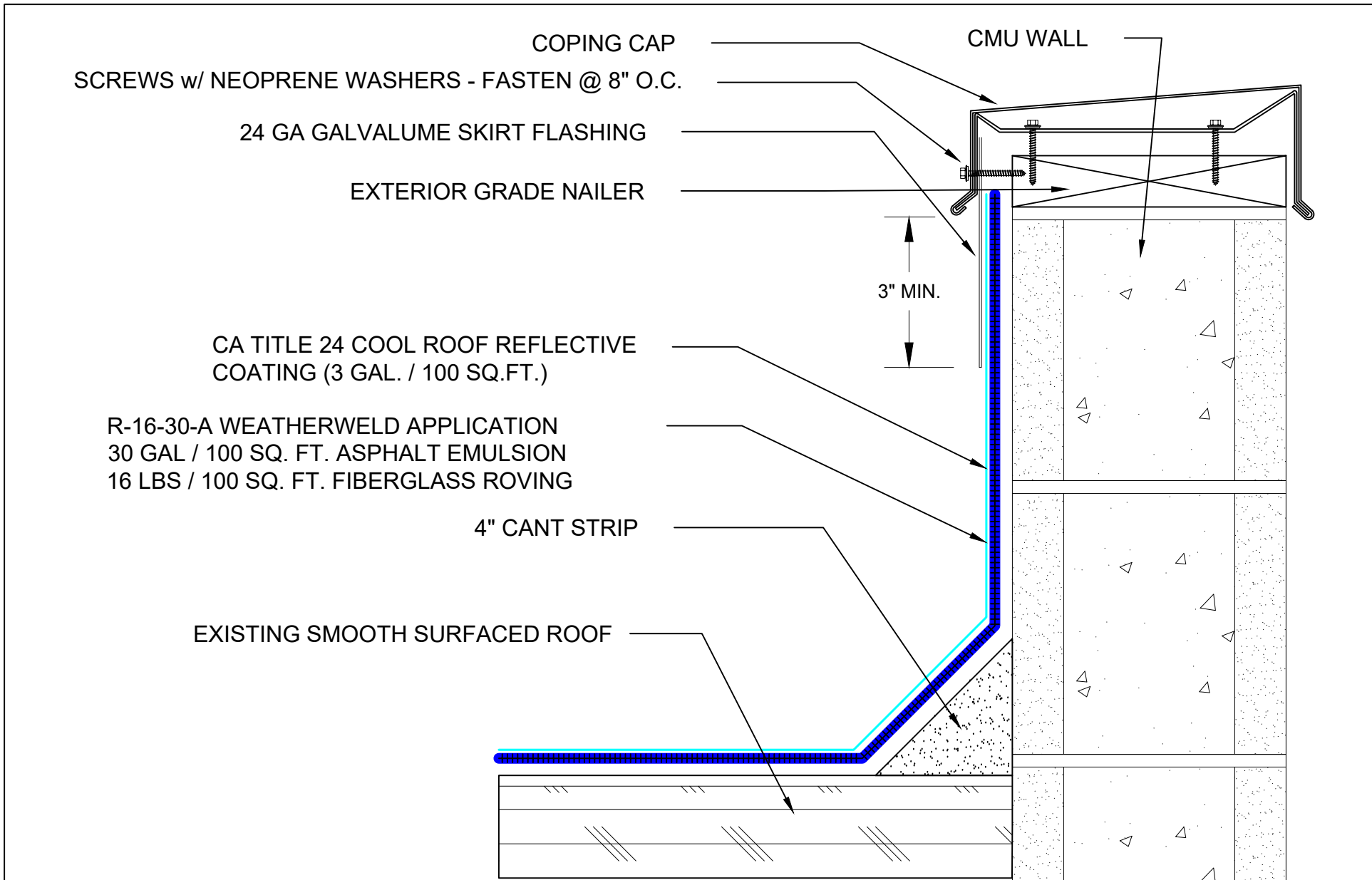
DRAWING TITLE:
SKIRTED COUNTERFLASHING AT CMU WALL

DETAIL NUMBER:
307

PREPARED FOR:			
DRAWN BY: R. Weygant	PROJECT:		
APPROVED BY: M. Jones	INSTALLED BY: TBD	DATE: 1/24/24	SCALE: 3" = 1'-0"



SYSTEM: R-16-30-A Composite Membrane Over Approved Existing Smooth Surfaced Roof	 <small>A DIVISION OF LIQUIFORM TECHNOLOGIES, INC.</small>	9757 7 th Street, Suite 803 Rancho Cucamonga, CA 91730-5297 (888) 440-3224 www.weatherweld.com		PREPARED FOR:	
		DRAWING TITLE: EXPANSION JOINT AT CMU WALL	DETAIL NUMBER: 308	DRAWN BY: R. Weygant	PROJECT:
		APPROVED BY: M. Jones	INSTALLED BY: TBD	DATE: 1/24/24	SCALE: 3" = 1'-0"



SYSTEM:
R-16-30-A
Composite Membrane Over
Approved Existing Smooth
Surfaced Roof

WEATHERWELD
A DIVISION OF LIQUIFORM TECHNOLOGIES, INC.

9757 7th Street, Suite 803
Rancho Cucamonga, CA 91730-5297
(888) 440-3224 | www.weatherweld.com

DRAWING TITLE:
SKIRTED COPING DETAIL AT CMU WALL

DETAIL NUMBER:
309

PREPARED FOR:

DRAWN BY:
R. Weygant

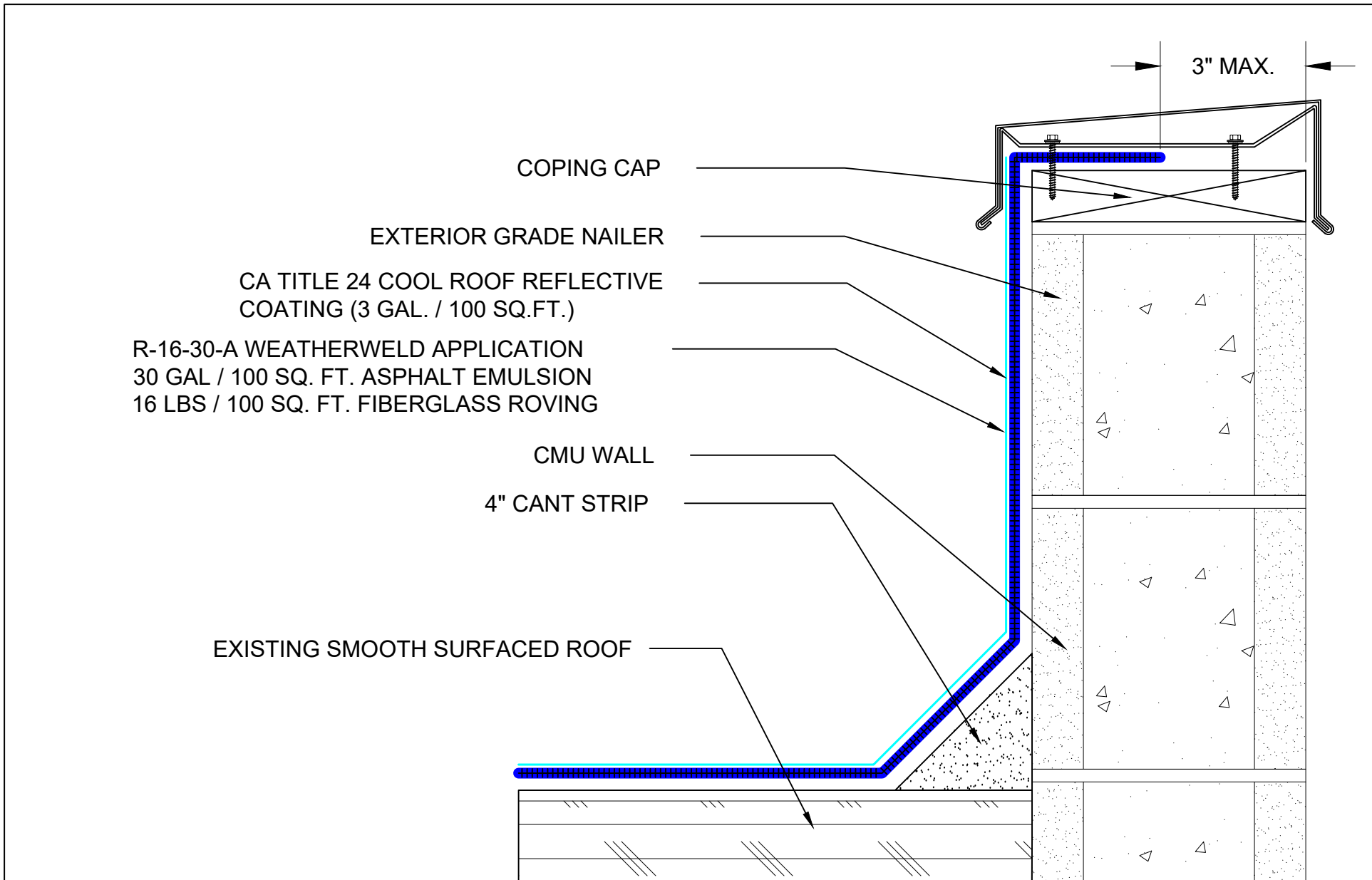
PROJECT:

APPROVED BY:
M. Jones

INSTALLED BY:
TBD

DATE:
1/24/24

SCALE:
3" = 1'-0"



COPING CAP

EXTERIOR GRADE NAILER

CA TITLE 24 COOL ROOF REFLECTIVE COATING (3 GAL. / 100 SQ.FT.)


R-16-30-A WEATHERWELD APPLICATION
 30 GAL / 100 SQ. FT. ASPHALT EMULSION
 16 LBS / 100 SQ. FT. FIBERGLASS ROVING

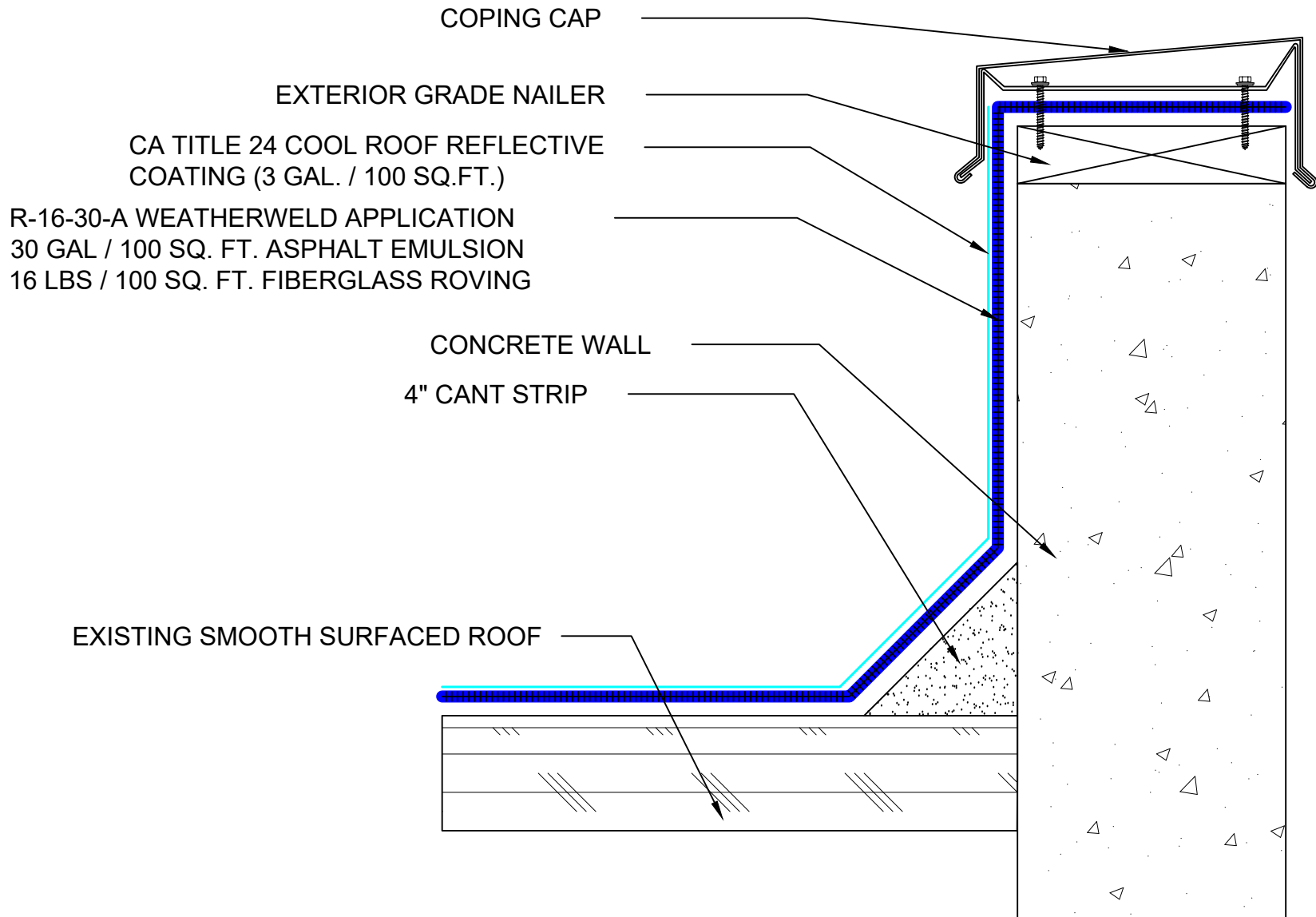
CMU WALL

4" CANT STRIP

EXISTING SMOOTH SURFACED ROOF

3" MAX.

SYSTEM: R-16-30-A Composite Membrane Over Approved Existing Smooth Surfaced Roof	 <small>A DIVISION OF LIQUIFORM TECHNOLOGIES, INC.</small>	9757 7 th Street, Suite 803 Rancho Cucamonga, CA 91730-5297 (888) 440-3224 www.weatherweld.com		PREPARED FOR:		
		DRAWING TITLE: COPING DETAIL AT CMU WALL (ALT)	DETAIL NUMBER: 310	DRAWN BY: R. Weygant	PROJECT:	
		APPROVED BY: M. Jones	INSTALLED BY: TBD	DATE: 1/24/24	SCALE: 3" = 1'-0"	



SYSTEM:

R-16-30-A

Composite Membrane Over
Approved Existing Smooth
Surfaced Roof

WEATHERWELD

A DIVISION OF LIQUIFORM TECHNOLOGIES, INC.

9757 7th Street, Suite 803
Rancho Cucamonga, CA 91730-5297
(888) 440-3224 | www.weatherweld.com

PREPARED FOR:

DRAWING TITLE:
COPING CAP FLASHING AT CONCRETE WALL

DETAIL NUMBER:
351

DRAWN BY:
R. Weygant

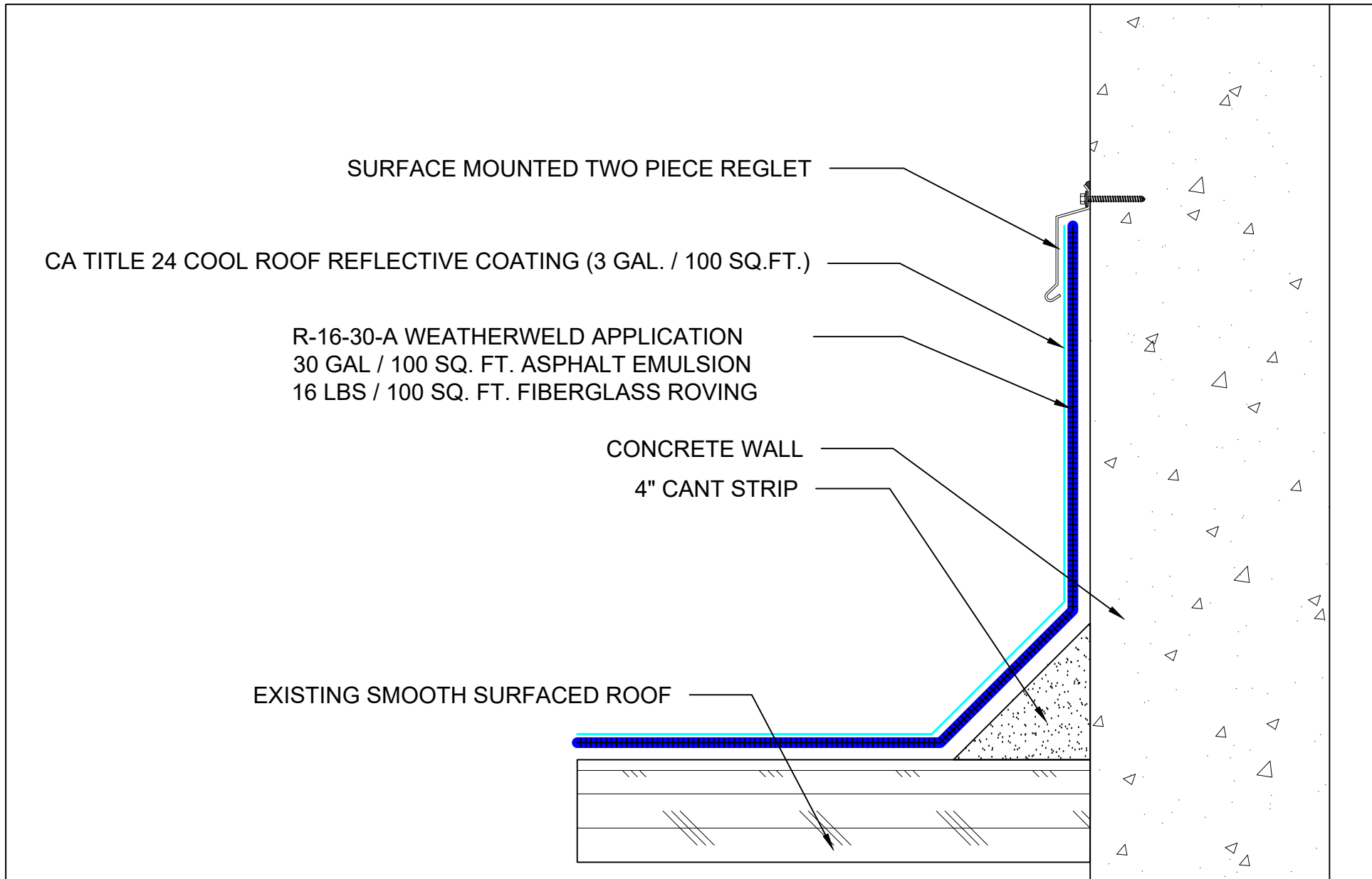
PROJECT:


APPROVED BY:
M. Jones

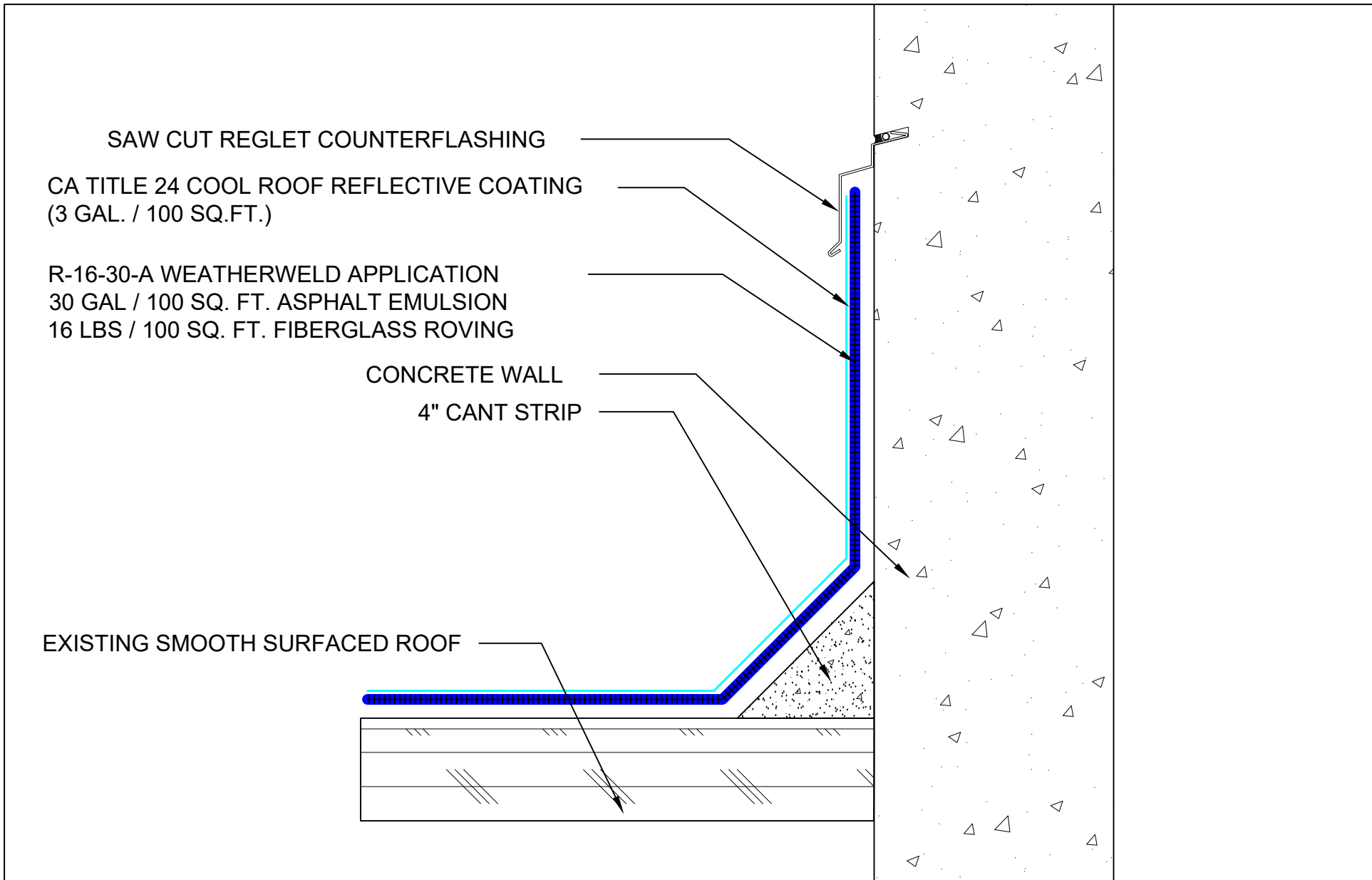
INSTALLED BY:
TBD

DATE:
1/24/24

SCALE:
3" = 1'-0"



SYSTEM: R-16-30-A Composite Membrane Over Approved Existing Smooth Surfaced Roof	 <small>A DIVISION OF LIQUIFORM TECHNOLOGIES, INC.</small>	9757 7 th Street, Suite 803 Rancho Cucamonga, CA 91730-5297 (888) 440-3224 www.weatherweld.com		PREPARED FOR:	
		DRAWING TITLE: SURFACE MOUNTED COUNTERFLSHING AT CONCRETE WALL	DETAIL NUMBER: 352	DRAWN BY: R. Weygant	PROJECT:
		APPROVED BY: M. Jones	INSTALLED BY: TBD	DATE: 1/24/24	SCALE: 3" = 1'-0"



SYSTEM:
R-16-30-A
Composite Membrane Over
Approved Existing Smooth
Surfaced Roof

WEATHERWELD
A DIVISION OF LIQUIFORM TECHNOLOGIES, INC.

9757 7th Street, Suite 803
Rancho Cucamonga, CA 91730-5297
(888) 440-3224 | www.weatherweld.com

DRAWING TITLE:
SAW CUT REGLET AT CONCRETE WALL

DETAIL NUMBER:
353

PREPARED FOR:

DRAWN BY:
R. Weygant

PROJECT:

APPROVED BY:
M. Jones

INSTALLED BY:
TBD

DATE:
1/24/24

SCALE:
3" = 1'-0"

CA TITLE 24 COOL ROOF REFLECTIVE COATING (3 GAL. / 100 SQ.FT.)

R-16-30-A WEATHERWELD APPLICATION
30 GAL / 100 SQ. FT. ASPHALT EMULSION
16 LBS / 100 SQ. FT. FIBERGLASS ROVING

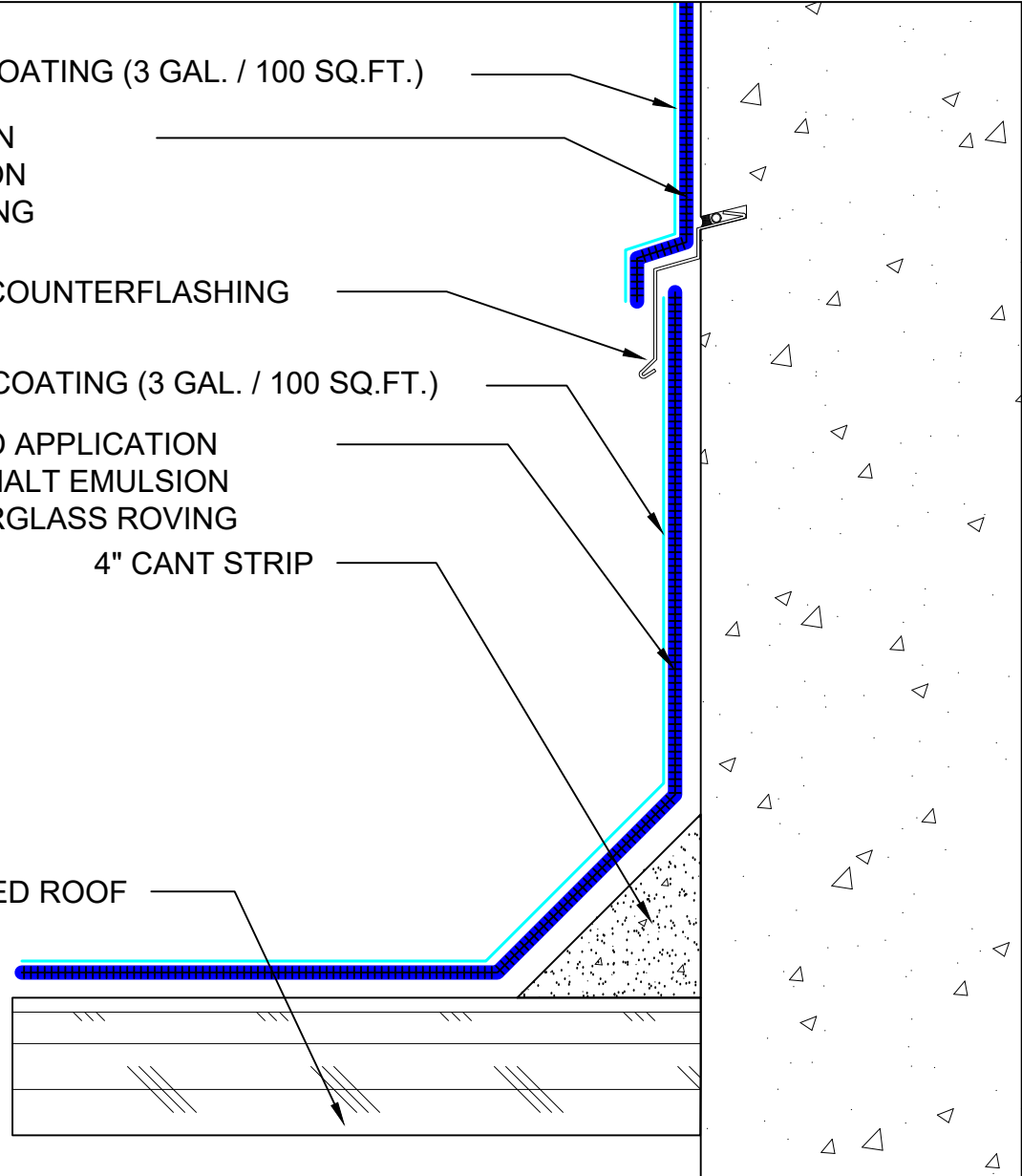
EXISTING COUNTERFLASHING

CA TITLE 24 COOL ROOF REFLECTIVE COATING (3 GAL. / 100 SQ.FT.)

R-16-30-A WEATHERWELD APPLICATION
30 GAL / 100 SQ. FT. ASPHALT EMULSION
16 LBS / 100 SQ. FT. FIBERGLASS ROVING

4" CANT STRIP

EXISTING SMOOTH SURFACED ROOF



SYSTEM:

R-16-30-A

Composite Membrane Over
Approved Existing Smooth
Surfaced Roof

WEATHERWELD

A DIVISION OF LIQUIFORM TECHNOLOGIES, INC.

9757 7th Street, Suite 803
Rancho Cucamonga, CA 91730-5297
(888) 440-3224 | www.weatherweld.com

DRAWING TITLE:

**CONCRETE WALL WITH EXISTING REGLET
COUNTERFLASHING**

DETAIL NUMBER:

354

PREPARED FOR:

DRAWN BY:
R. Weygant

PROJECT:

APPROVED BY:
M. Jones

INSTALLED BY:
TBD

DATE:
1/24/24

SCALE:
3" = 1'-0"

CA TITLE 24 COOL ROOF REFLECTIVE COATING (3 GAL. / 100 SQ.FT.)

R-16-30-A WEATHERWELD APPLICATION
30 GAL / 100 SQ. FT. ASPHALT EMULSION
16 LBS / 100 SQ. FT. FIBERGLASS ROVING

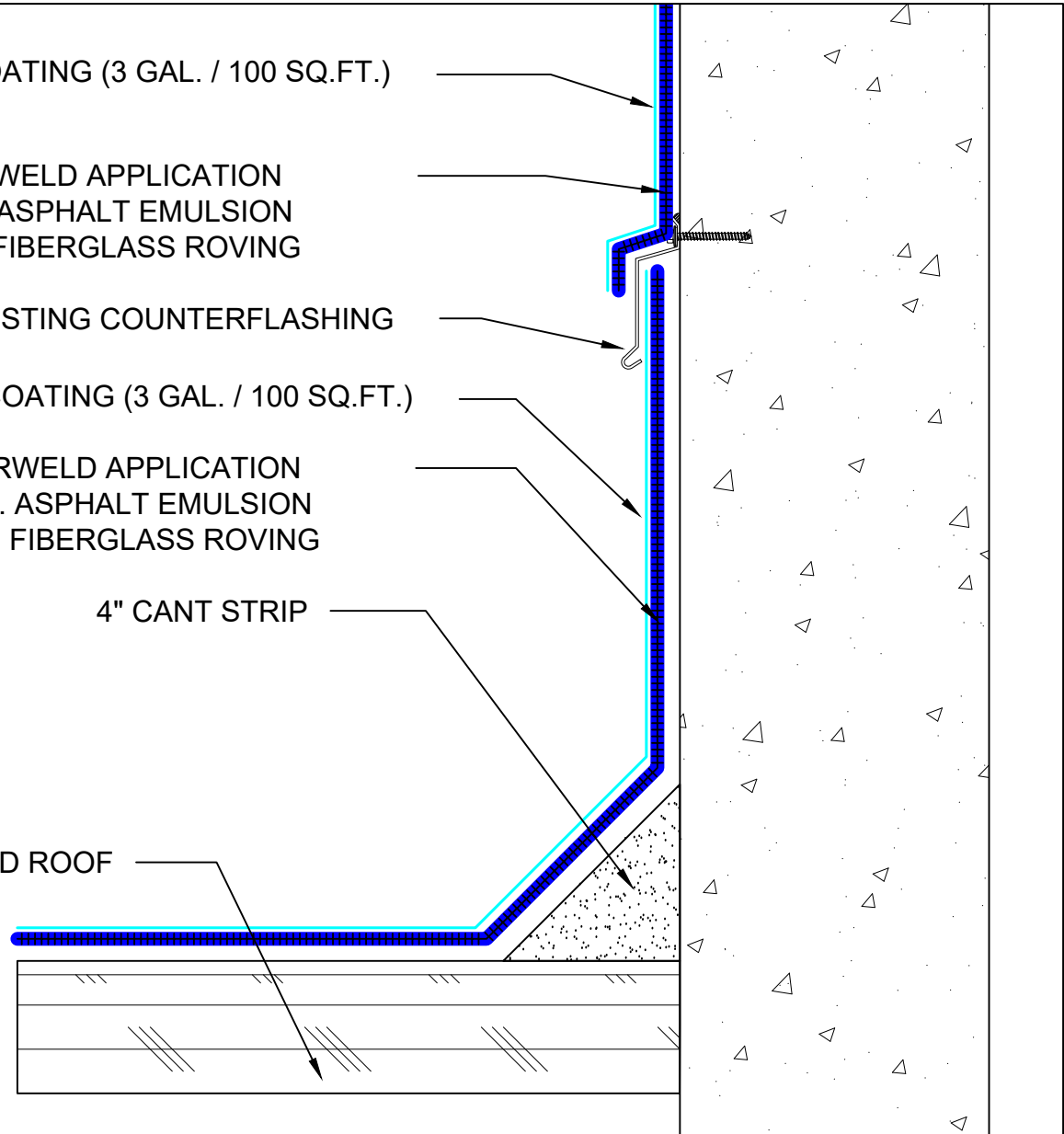
EXISTING COUNTERFLASHING

CA TITLE 24 COOL ROOF REFLECTIVE COATING (3 GAL. / 100 SQ.FT.)

R-16-30-A WEATHERWELD APPLICATION
30 GAL / 100 SQ. FT. ASPHALT EMULSION
16 LBS / 100 SQ. FT. FIBERGLASS ROVING

4" CANT STRIP

EXISTING SMOOTH SURFACED ROOF



SYSTEM:

R-16-30-A

Composite Membrane Over
Approved Existing Smooth
Surfaced Roof

WEATHERWELD

A DIVISION OF LIQUIFORM TECHNOLOGIES, INC.

9757 7th Street, Suite 803
Rancho Cucamonga, CA 91730-5297
(888) 440-3224 | www.weatherweld.com

DRAWING TITLE:

**CONCRETE WALL WITH EXISTING SURFACE
MOUNTED COUNTERFLASHING**

DETAIL NUMBER:

355

PREPARED FOR:

DRAWN BY:

R. Weygant

PROJECT:

APPROVED BY:
M. Jones

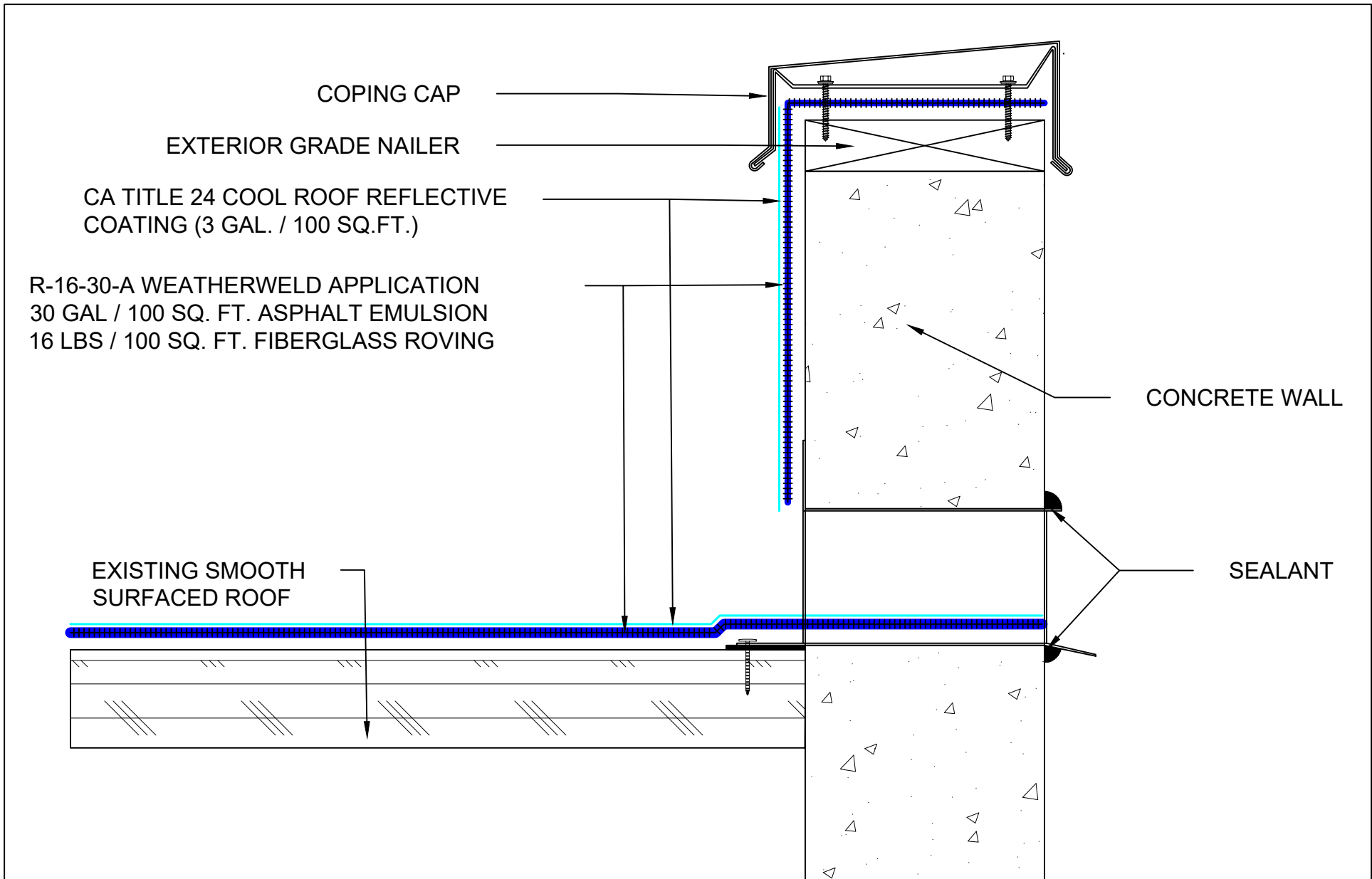
INSTALLED BY:
TBD


DATE:

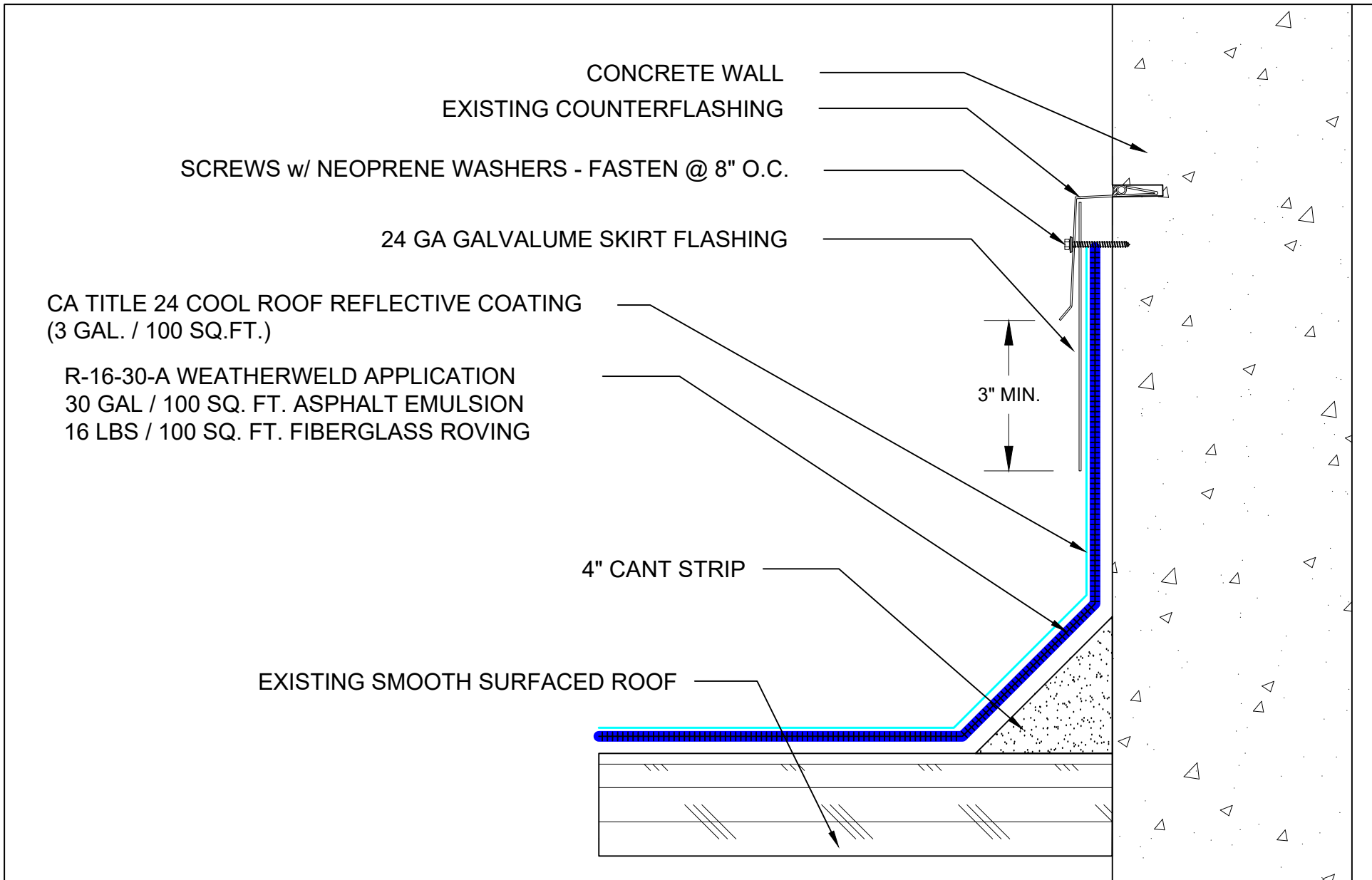
1/24/24


SCALE:

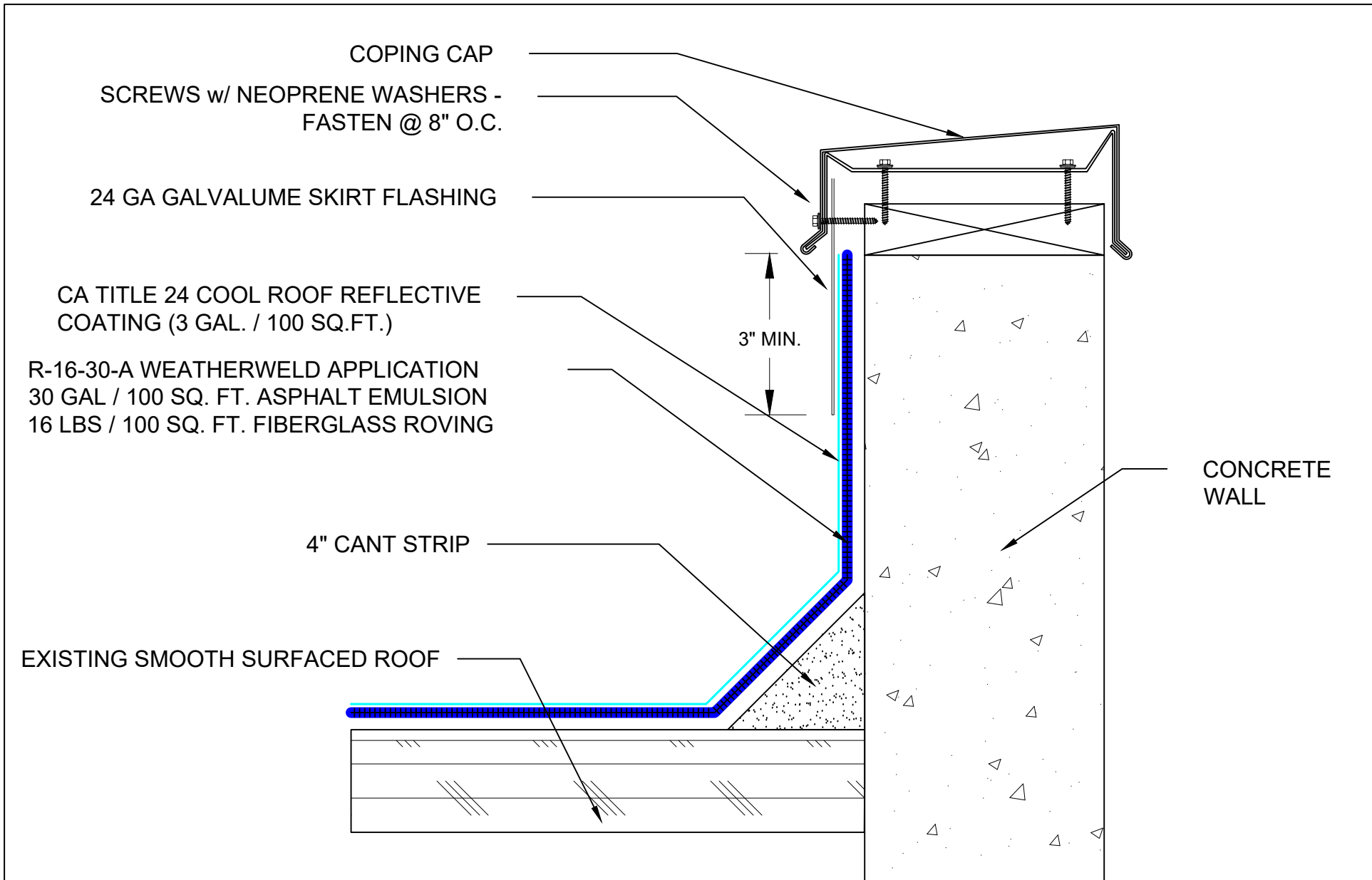
3" = 1'-0"



SYSTEM: R-16-30-A Composite Membrane Over Approved Existing Smooth Surfaced Roof	 A DIVISION OF LIQUIFORM TECHNOLOGIES, INC.	9757 7 th Street, Suite 803 Rancho Cucamonga, CA 91730-5297 (888) 440-3224 www.weatherweld.com		PREPARED FOR:	
		DRAWING TITLE: THRU WALL SCUPPER FLASHING AT CONCRETE WALL	DETAIL NUMBER: 356	DRAWN BY: R. Weygant	PROJECT:
		APPROVED BY: M. Jones	INSTALLED BY: TBD	DATE: 1/24/24	SCALE: 3" = 1'-0"



SYSTEM: R-16-30-A Composite Membrane Over Approved Existing Smooth Surfaced Roof	 <small>A DIVISION OF LIQUIFORM TECHNOLOGIES, INC.</small>	9757 7 th Street, Suite 803 Rancho Cucamonga, CA 91730-5297 (888) 440-3224 www.weatherweld.com		PREPARED FOR:	
		DRAWING TITLE: SKIRTED COUNTERFLASHING AT CONCRETE WALL	DETAIL NUMBER: 357	DRAWN BY: R. Weygant	PROJECT:
		APPROVED BY: M. Jones	INSTALLED BY: TBD	DATE: 1/24/24	SCALE: 3" = 1'-0"



SYSTEM:
R-16-30-A
Composite Membrane Over
Approved Existing Smooth
Surfaced Roof

WEATHERWELD
A DIVISION OF LIQUIFORM TECHNOLOGIES, INC.

9757 7th Street, Suite 803
Rancho Cucamonga, CA 91730-5297
(888) 440-3224 | www.weatherweld.com

DRAWING TITLE:
SKIRTED COPING AT CONCRETE WALL

DETAIL NUMBER:
359

PREPARED FOR:

DRAWN BY:
R. Weygant

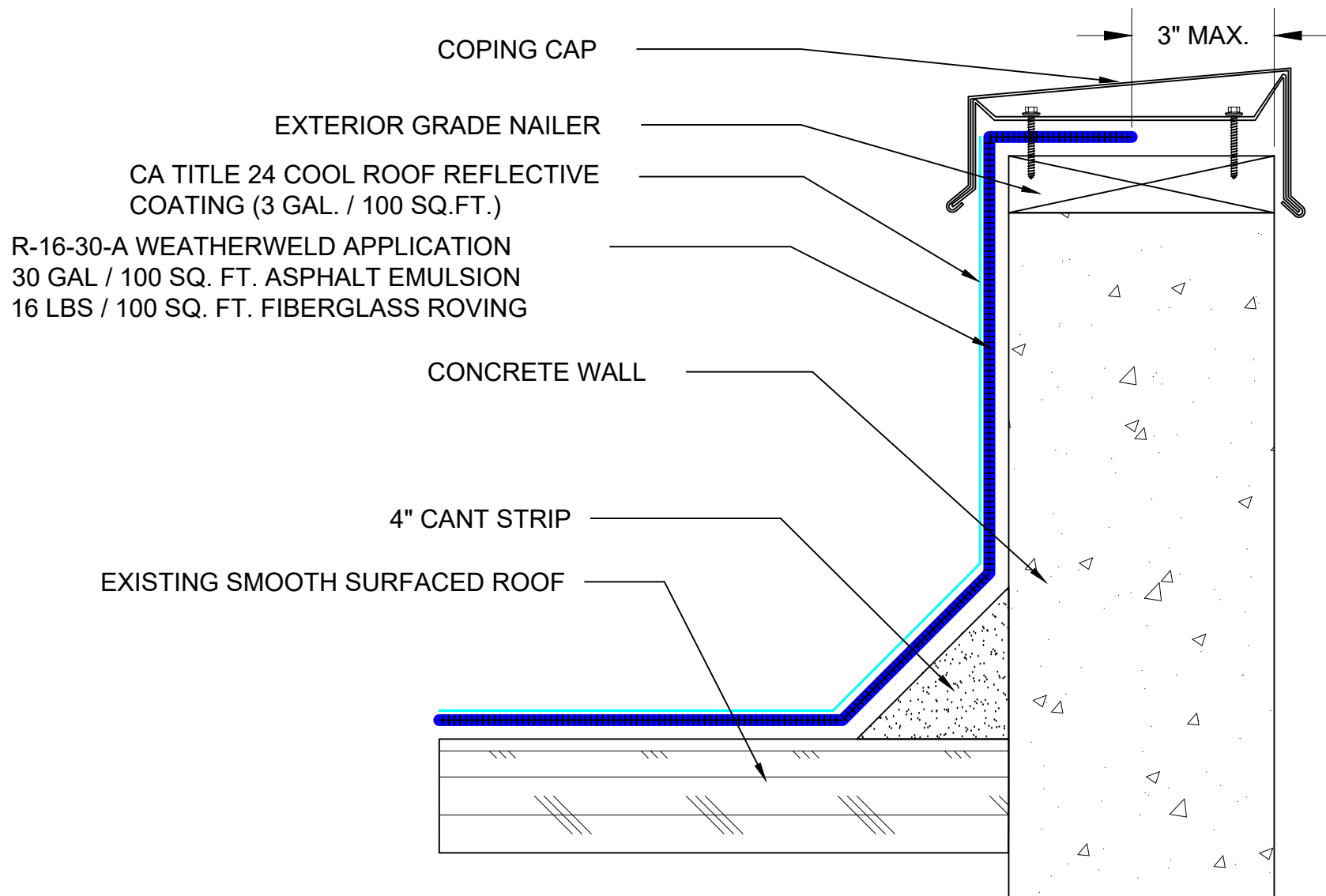
PROJECT:

APPROVED BY:
M. Jones

INSTALLED BY:
TBD

DATE:
1/24/24

SCALE:
3" = 1'-0"



SYSTEM:

R-16-30-A

Composite Membrane Over
Approved Existing Smooth
Surfaced Roof

WEATHERWELD

A DIVISION OF LIQUIFORM TECHNOLOGIES, INC.

9757 7th Street, Suite 803
Rancho Cucamonga, CA 91730-5297
(888) 440-3224 | www.weatherweld.com

DRAWING TITLE:

COPING DETAIL AT CONCRETE WALL (ALT)

DETAIL NUMBER:

360

PREPARED FOR:

DRAWN BY:

R. Weygant

PROJECT:

APPROVED BY:
M. Jones

INSTALLED BY:
TBD

DATE:
1/24/24

SCALE:
3" = 1'-0"

EXPANSION JOINT COVER - INSTALLED IN ACCORDANCE WITH
MANUFACTURER'S RECOMMENDATIONS

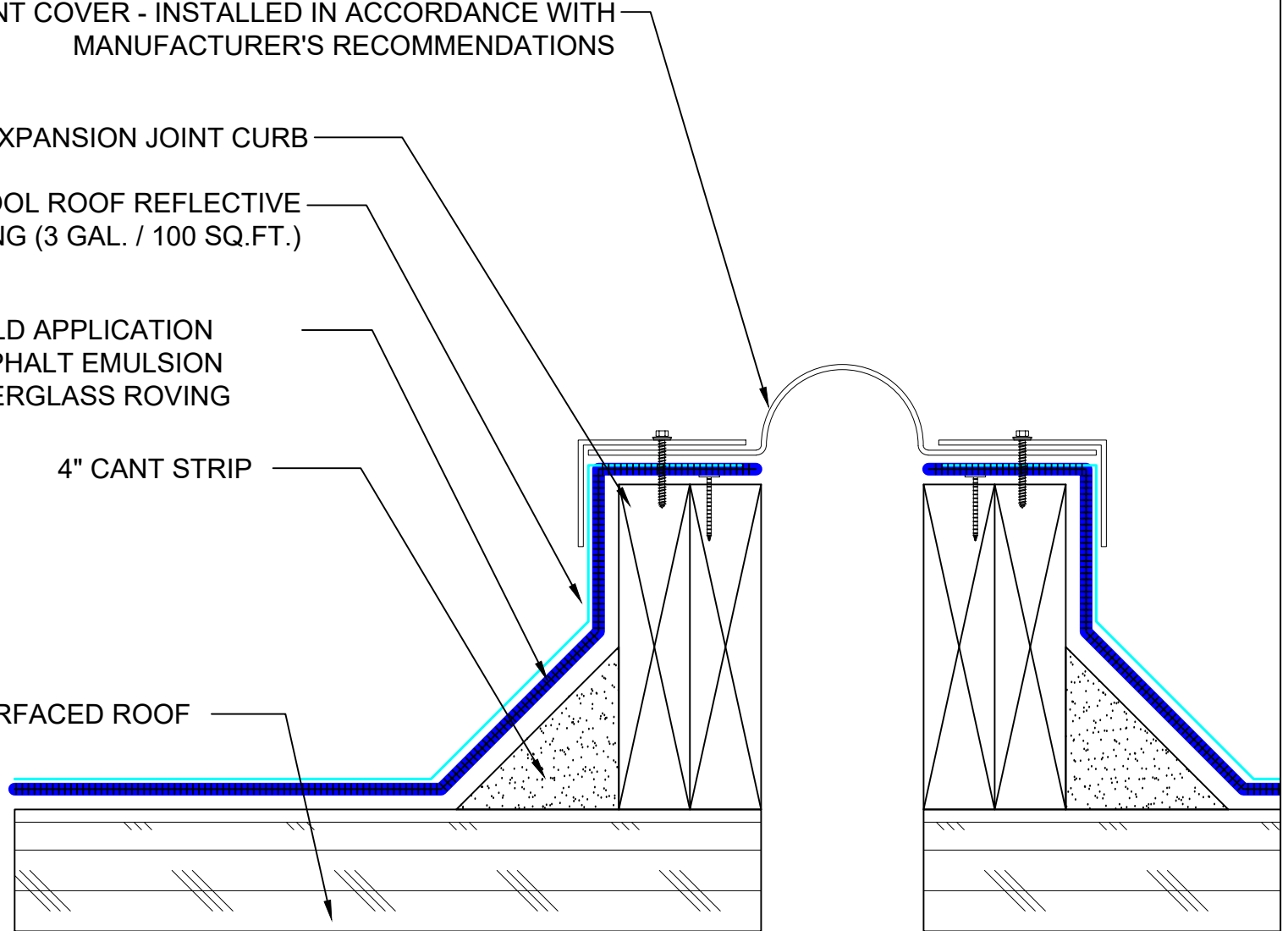
EXPANSION JOINT CURB

CA TITLE 24 COOL ROOF REFLECTIVE
COATING (3 GAL. / 100 SQ.FT.)

R-16-30-A WEATHERWELD APPLICATION
30 GAL / 100 SQ. FT. ASPHALT EMULSION
16 LBS / 100 SQ. FT. FIBERGLASS ROVING

4" CANT STRIP

EXISTING SMOOTH SURFACED ROOF



SYSTEM:

R-16-30-A

Composite Membrane Over
Approved Existing Smooth
Surfaced Roof

WEATHERWELD

A DIVISION OF LIQUIFORM TECHNOLOGIES, INC.

9757 7th Street, Suite 803
Rancho Cucamonga, CA 91730-5297
(888) 440-3224 | www.weatherweld.com

DRAWING TITLE:

EXPANSION JOINT

DETAIL NUMBER:

401

PREPARED FOR:

DRAWN BY:

R. Weygant

PROJECT:

APPROVED BY:
M. Jones

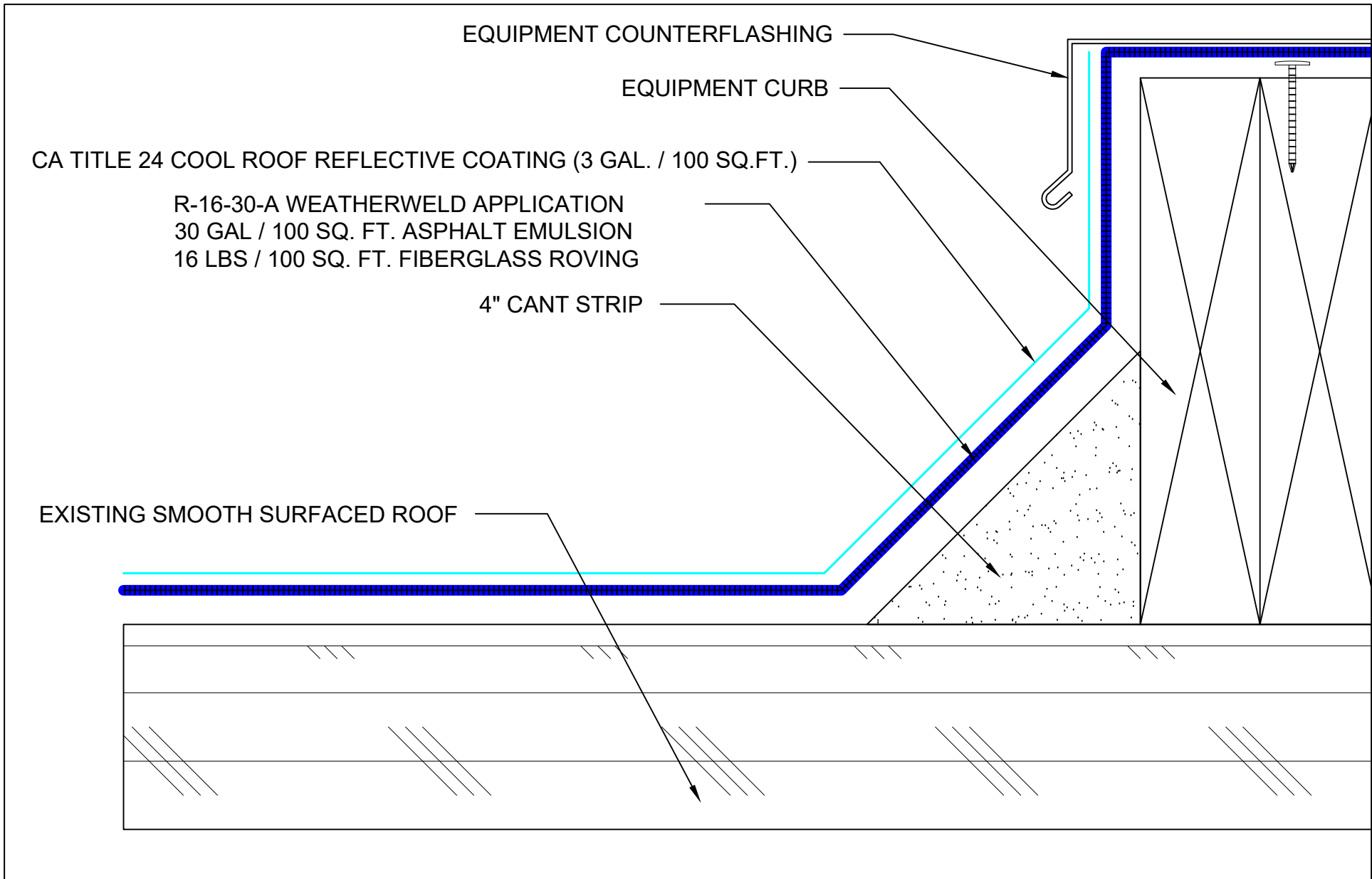
INSTALLED BY:
TBD


DATE:

1/24/24

SCALE:

3" = 1'-0"



SYSTEM: R-16-30-A Composite Membrane Over Approved Existing Smooth Surfaced Roof	 <small>A DIVISION OF LIQUIFORM TECHNOLOGIES, INC.</small>	9757 7 th Street, Suite 803 Rancho Cucamonga, CA 91730-5297 (888) 440-3224 www.weatherweld.com		PREPARED FOR:	
		DRAWING TITLE: EQUIPMENT CURB FLASHING	DETAIL NUMBER: 402	DRAWN BY: R. Weygant	PROJECT:
		APPROVED BY: M. Jones	INSTALLED BY: TBD	DATE: 1/24/24	SCALE: 6" = 1'-0"

UNIT SKYLIGHT - FASTENED IN ACCORDANCE WITH SKYLIGHT MANUFACTURERS' RECOMMENDATIONS

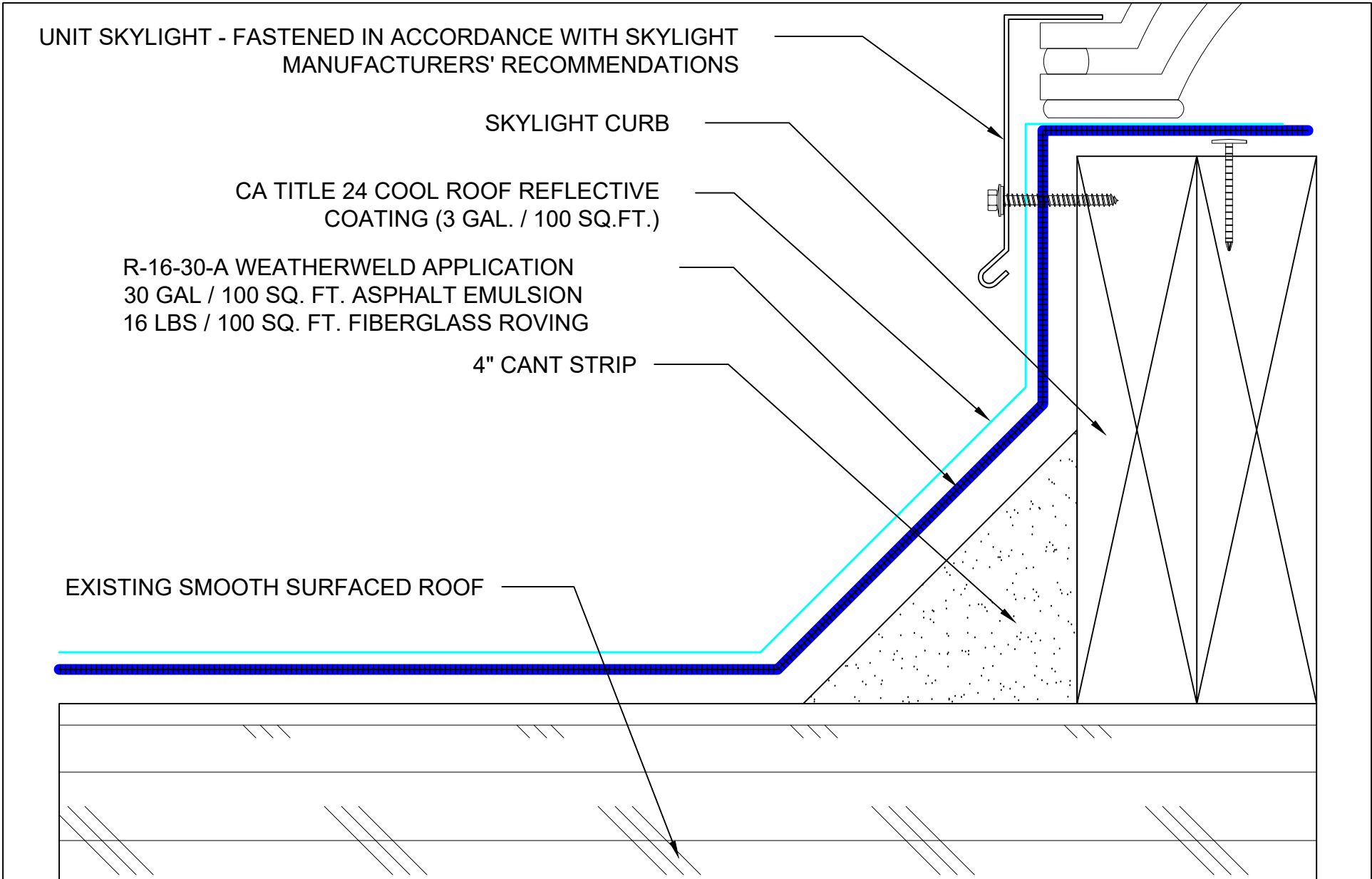
SKYLIGHT CURB

CA TITLE 24 COOL ROOF REFLECTIVE COATING (3 GAL. / 100 SQ.FT.)

R-16-30-A WEATHERWELD APPLICATION
 30 GAL / 100 SQ. FT. ASPHALT EMULSION
 16 LBS / 100 SQ. FT. FIBERGLASS ROVING

4" CANT STRIP

EXISTING SMOOTH SURFACED ROOF



SYSTEM:
R-16-30-A
 Composite Membrane Over
 Approved Existing Smooth
 Surfaced Roof

WEATHERWELD
A DIVISION OF LIQUIFORM TECHNOLOGIES, INC.

9757 7th Street, Suite 803
 Rancho Cucamonga, CA 91730-5297
 (888) 440-3224 | www.weatherweld.com

DRAWING TITLE:
CURB MOUNTED SKYLIGHT FLASHING

DETAIL NUMBER:
403

PREPARED FOR:

DRAWN BY:
R. Weygant

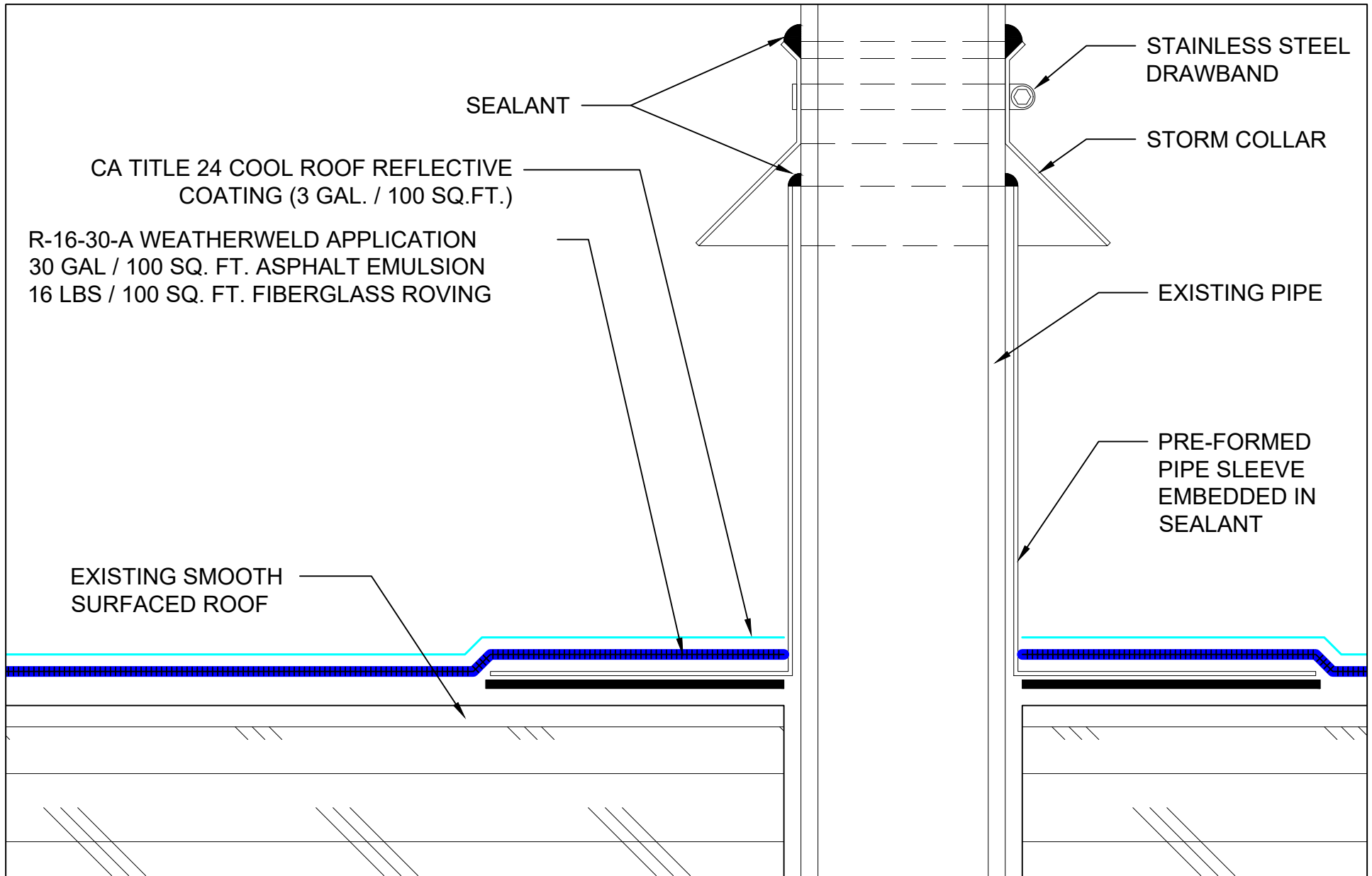
PROJECT:


APPROVED BY:
M. Jones

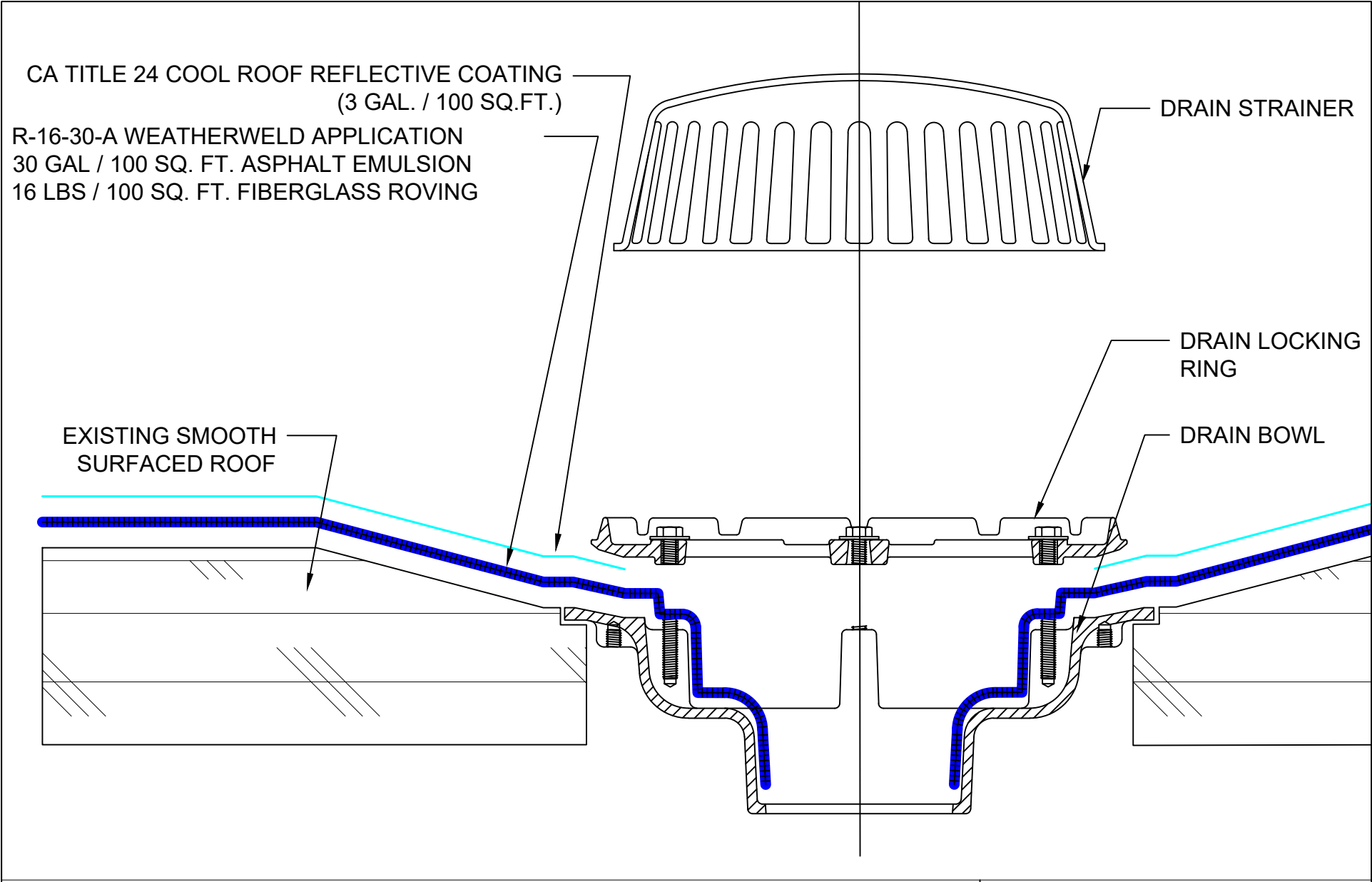
INSTALLED BY:
TBD

DATE:
1/24/24

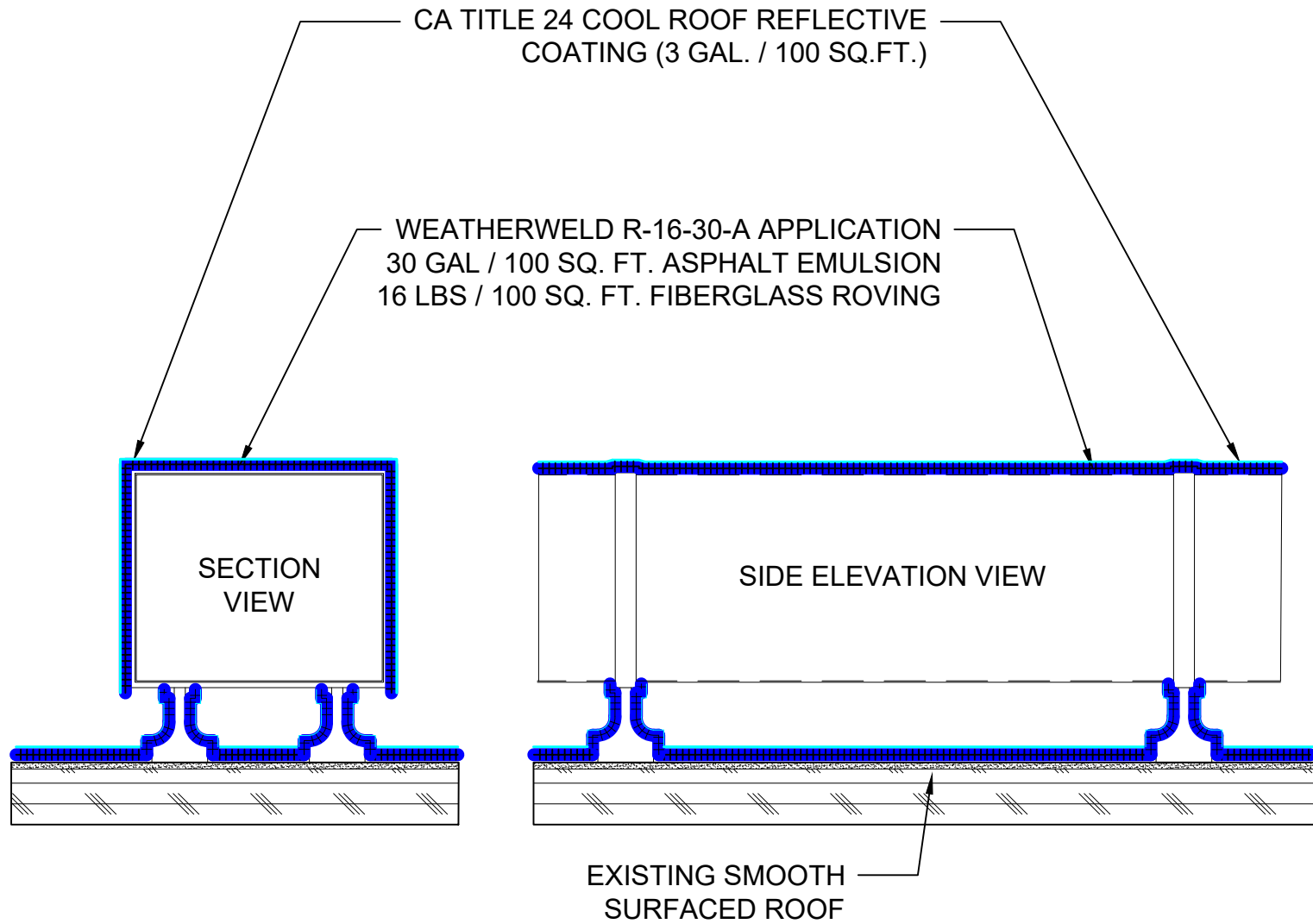
SCALE:
6" = 1'-0"



SYSTEM: R-16-30-A Composite Membrane Over Approved Existing Smooth Surfaced Roof	 <small>A DIVISION OF LIQUIFORM TECHNOLOGIES, INC.</small>	9757 7 th Street, Suite 803 Rancho Cucamonga, CA 91730-5297 (888) 440-3224 www.weatherweld.com		PREPARED FOR:	
		DRAWING TITLE: PIPE PENETRATION FLASHING	DETAIL NUMBER: 501	DRAWN BY: R. Weygant	PROJECT:
		APPROVED BY: M. Jones	INSTALLED BY: TBD	DATE: 1/24/24	SCALE: 6" = 1'-0"



SYSTEM: R-16-30-A Composite Membrane Over Approved Existing Smooth Surfaced Roof	 <small>A DIVISION OF LIQUIFORM TECHNOLOGIES, INC.</small>	9757 7 th Street, Suite 803 Rancho Cucamonga, CA 91730-5297 (888) 440-3224 www.weatherweld.com		PREPARED FOR:	
		DRAWING TITLE: DRAIN DETAIL	DETAIL NUMBER: 502	DRAWN BY: R. Weygant	PROJECT:
		APPROVED BY: M. Jones	INSTALLED BY: TBD	DATE: 1/24/24	SCALE: 6" = 1'-0"



SYSTEM:

R-16-30-A

Composite Membrane Over
Approved Existing Smooth
Surfaced Roof

WEATHERWELD

A DIVISION OF LIQUIFORM TECHNOLOGIES, INC.

9757 7th Street, Suite 803
Rancho Cucamonga, CA 91730-5297
(888) 440-3224 | www.weatherweld.com

DRAWING TITLE:

ROOFTOP DUCT ENCAPSULATION

DETAIL NUMBER:

503

PREPARED FOR:

DRAWN BY:
R. Weygant

PROJECT:

APPROVED BY:
M. Jones

INSTALLED BY:
TBD

DATE:
1/24/24

SCALE:
1 1/2" = 1'-0"