

System Overview

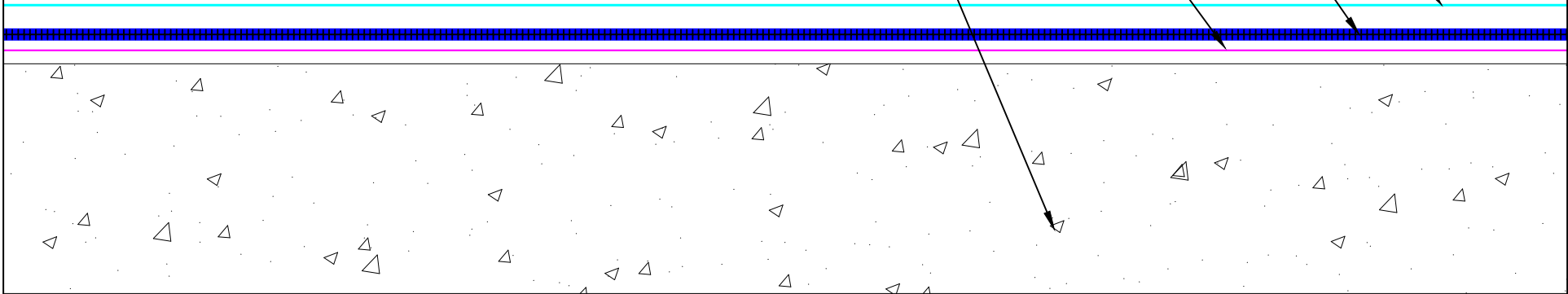
Deck:	Concrete Deck
Base Sheet:	Inverted Mineral Cap Sheet
Insulation / Cover:	-
Asphalt Emulsion:	30 Gal
Fiberglass Roving:	16 Lbs
Coating:	CA Title 24 Cool Roof Reflective Coating (3 Gal. / 100 Sq.Ft.)

CA TITLE 24 COOL ROOF REFLECTIVE COATING (3 GAL. / 100 SQ.FT.)

NCNN-1B-16-30-A WEATHERWELD APPLICATION
 30 GAL / 100 SQ. FT. ASPHALT EMULSION
 16 LBS / 100 SQ. FT. FIBERGLASS ROVING

INVERTED MINERAL SURFACED CAP SHEET

EXISTING CONCRETE DECK



SYSTEM:
NCNN-1B-16-30-A
 Composite Membrane Over
 Concrete Deck



9757 7th Street, Suite 803
 Rancho Cucamonga, CA 91730-5297
 (888) 440-3224 | www.weatherweld.com

PREPARED FOR:

DRAWING TITLE:

SYSTEM OVERVIEW

DETAIL NUMBER:

101

DRAWN BY:
R. Weygant

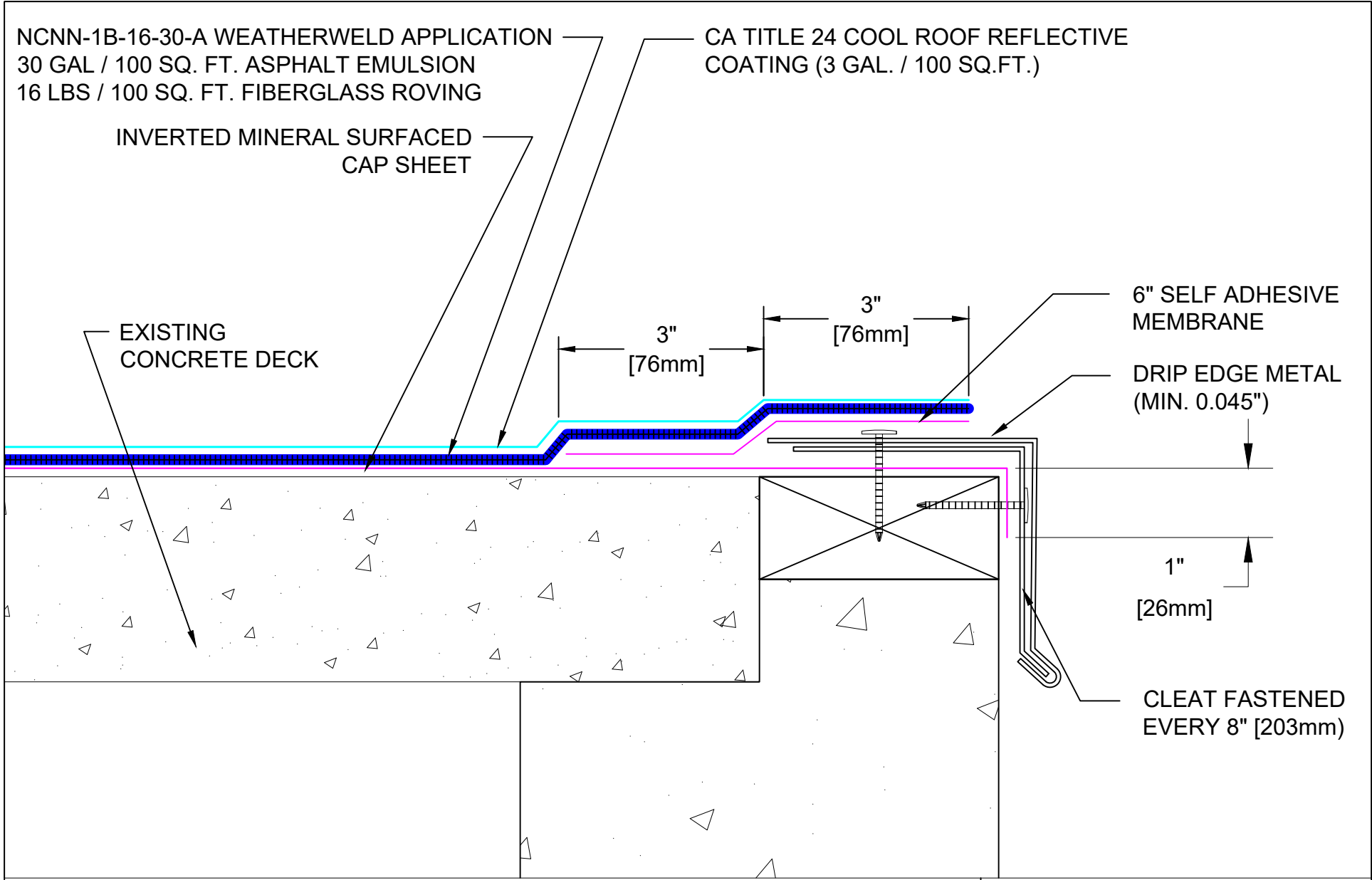
PROJECT:


APPROVED BY:
M. Jones

INSTALLED BY:

DATE:
1/24/24

SCALE:
NTS



SYSTEM: NCNN-1B-16-30-A Composite Membrane Over Concrete Deck		 A DIVISION OF LIQUIFORM TECHNOLOGIES, INC.		9757 7 th Street, Suite 803 Rancho Cucamonga, CA 91730-5297 (888) 440-3224 www.weatherweld.com		PREPARED FOR:	
DRAWING TITLE: EDGE FLASHING		DETAIL NUMBER: 201		DRAWN BY: R. Weygant		PROJECT:	
				APPROVED BY: M. Jones		INSTALLED BY: TBD	
				DATE: 1/24/24		SCALE: 6" = 1'-0"	

COPING CAP

EXTERIOR GRADE NAILER

CA TITLE 24 COOL ROOF REFLECTIVE COATING (3 GAL. / 100 SQ.FT.)

NCNN-1B-16-30-A WEATHERWELD APPLICATION

30 GAL / 100 SQ. FT. ASPHALT EMULSION

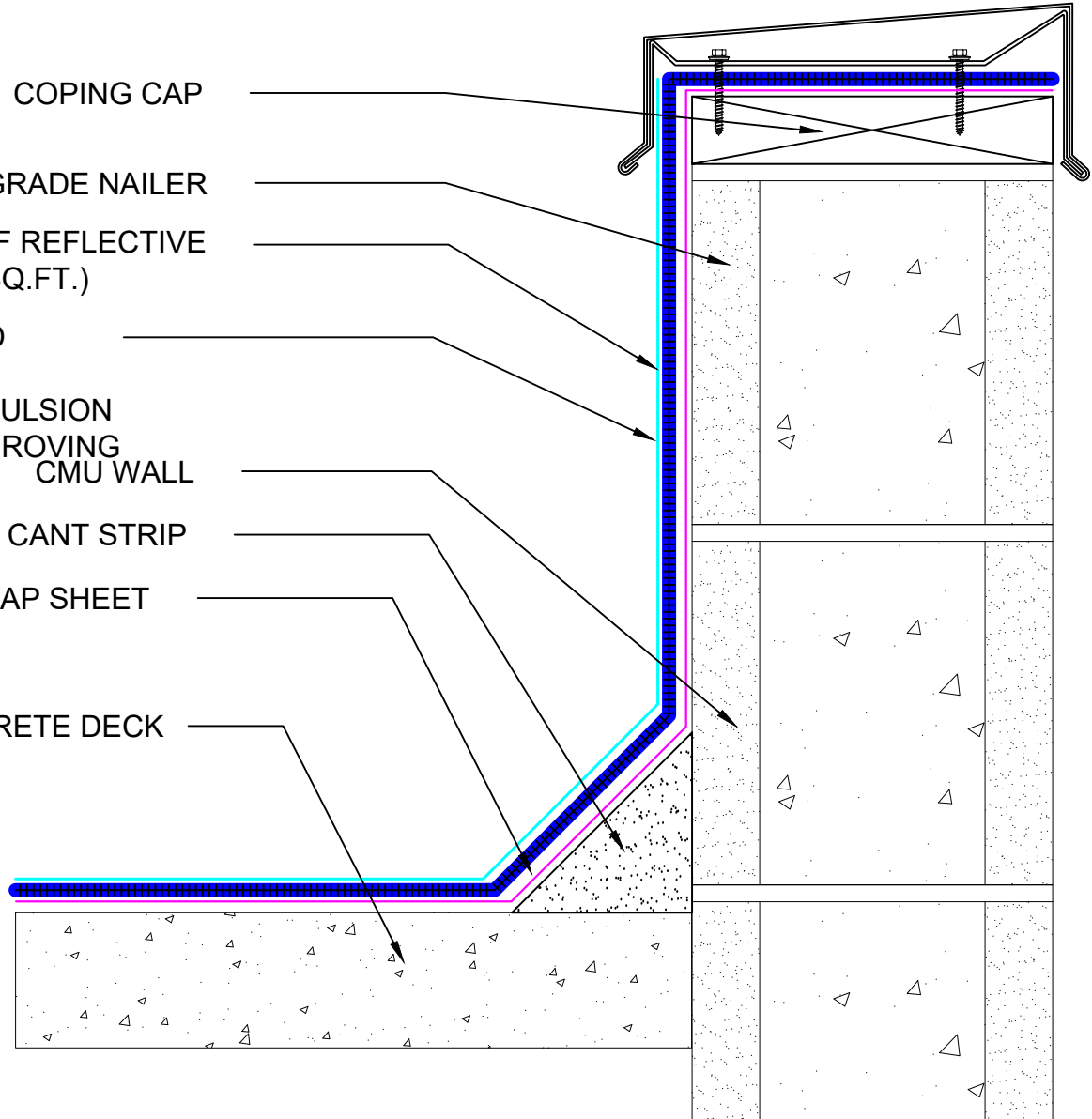
16 LBS / 100 SQ. FT. FIBERGLASS ROVING

CMU WALL

4" CANT STRIP

INVERTED MINERAL SURFACED CAP SHEET

EXISTING CONCRETE DECK



SYSTEM:

NCNN-1B-16-30-A

Composite Membrane Over
Concrete Deck

WEATHERWELD

A DIVISION OF LIQUIFORM TECHNOLOGIES, INC.

9757 7th Street, Suite 803
Rancho Cucamonga, CA 91730-5297
(888) 440-3224 | www.weatherweld.com

DRAWING TITLE:

COPING CAP FLASHING AT CMU WALL

DETAIL NUMBER:

301

PREPARED FOR:

DRAWN BY:

R. Weygant

PROJECT:

APPROVED BY:
M. Jones

INSTALLED BY:
TBD

DATE:

1/24/24

SCALE:

3" = 1'-0"

SURFACE MOUNTED TWO PIECE REGLET

CMU WALL

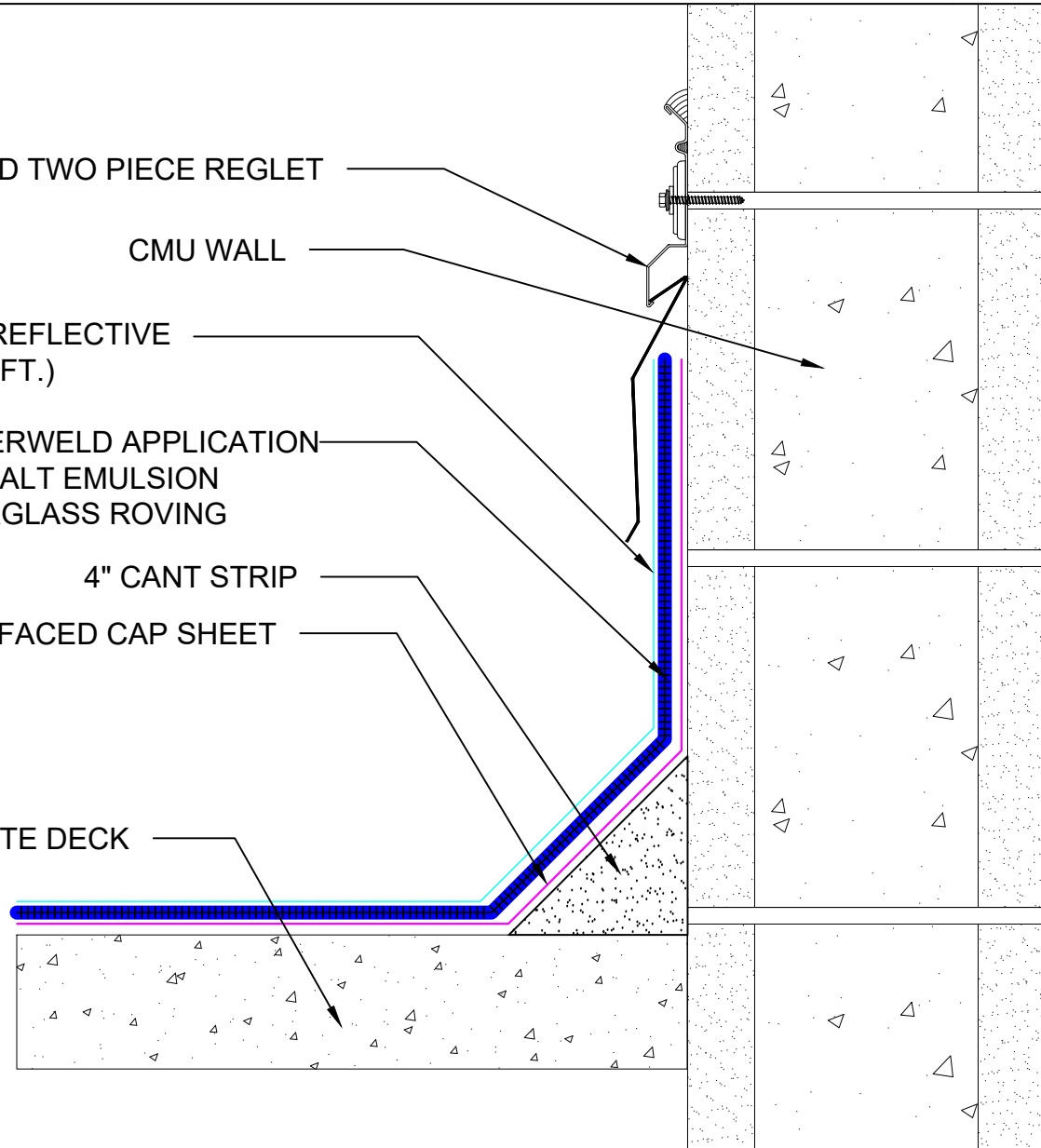
CA TITLE 24 COOL ROOF REFLECTIVE COATING (3 GAL. / 100 SQ.FT.)

NCNN-1B-16-30-A WEATHERWELD APPLICATION
30 GAL / 100 SQ. FT. ASPHALT EMULSION
16 LBS / 100 SQ. FT. FIBERGLASS ROVING

4" CANT STRIP

INVERTED MINERAL SURFACED CAP SHEET

EXISTING CONCRETE DECK



SYSTEM:

NCNN-1B-16-30-A

Composite Membrane Over
Concrete Deck

WEATHERWELD

A DIVISION OF LIQUIFORM TECHNOLOGIES, INC.

9757 7th Street, Suite 803
Rancho Cucamonga, CA 91730-5297
(888) 440-3224 | www.weatherweld.com

DRAWING TITLE:

SURFACE MOUNTED REGLET AT CMU WALL

DETAIL NUMBER:

302

PREPARED FOR:

DRAWN BY:
R. Weygant

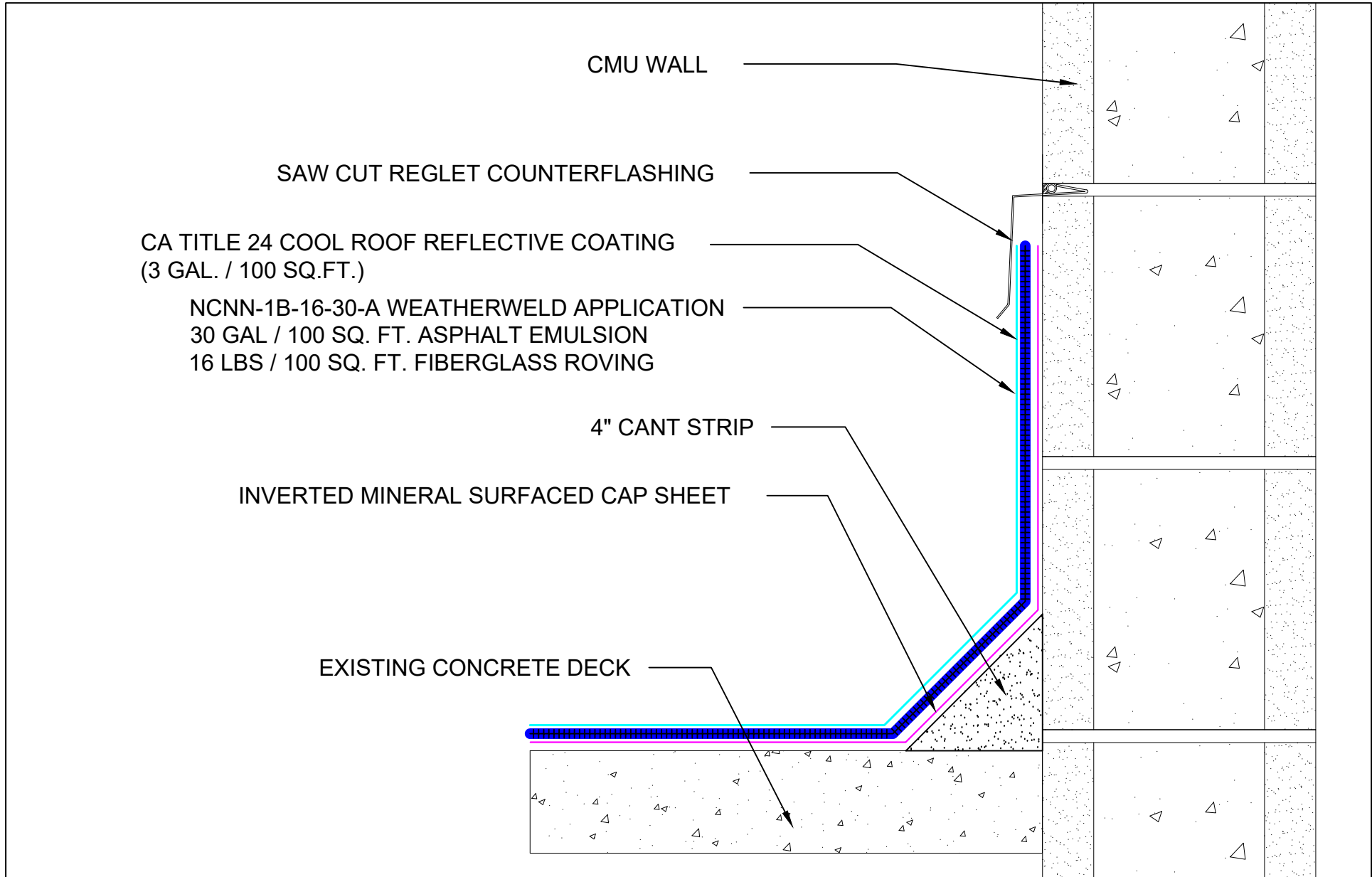
PROJECT:


APPROVED BY:
M. Jones

INSTALLED BY:
TBD

DATE:
1/24/24

SCALE:
3" = 1'-0"



SYSTEM: NCNN-1B-16-30-A Composite Membrane Over Concrete Deck	 <small>A DIVISION OF LIQUIFORM TECHNOLOGIES, INC.</small>	9757 7 th Street, Suite 803 Rancho Cucamonga, CA 91730-5297 (888) 440-3224 www.weatherweld.com		PREPARED FOR:	
		DRAWING TITLE: SAW CUT REGLET AT CMU WALL	DETAIL NUMBER: 303	DRAWN BY: R. Weygant	PROJECT:
		APPROVED BY: M. Jones	INSTALLED BY: TBD	DATE: 1/24/24	SCALE: 3" = 1'-0"

CA TITLE 24 COOL ROOF REFLECTIVE COATING (3 GAL. / 100 SQ.FT.)

NCNN-1B-16-30-A WEATHERWELD APPLICATION
30 GAL / 100 SQ. FT. ASPHALT EMULSION
16 LBS / 100 SQ. FT. FIBERGLASS ROVING

EXISTING COUNTERFLASHING

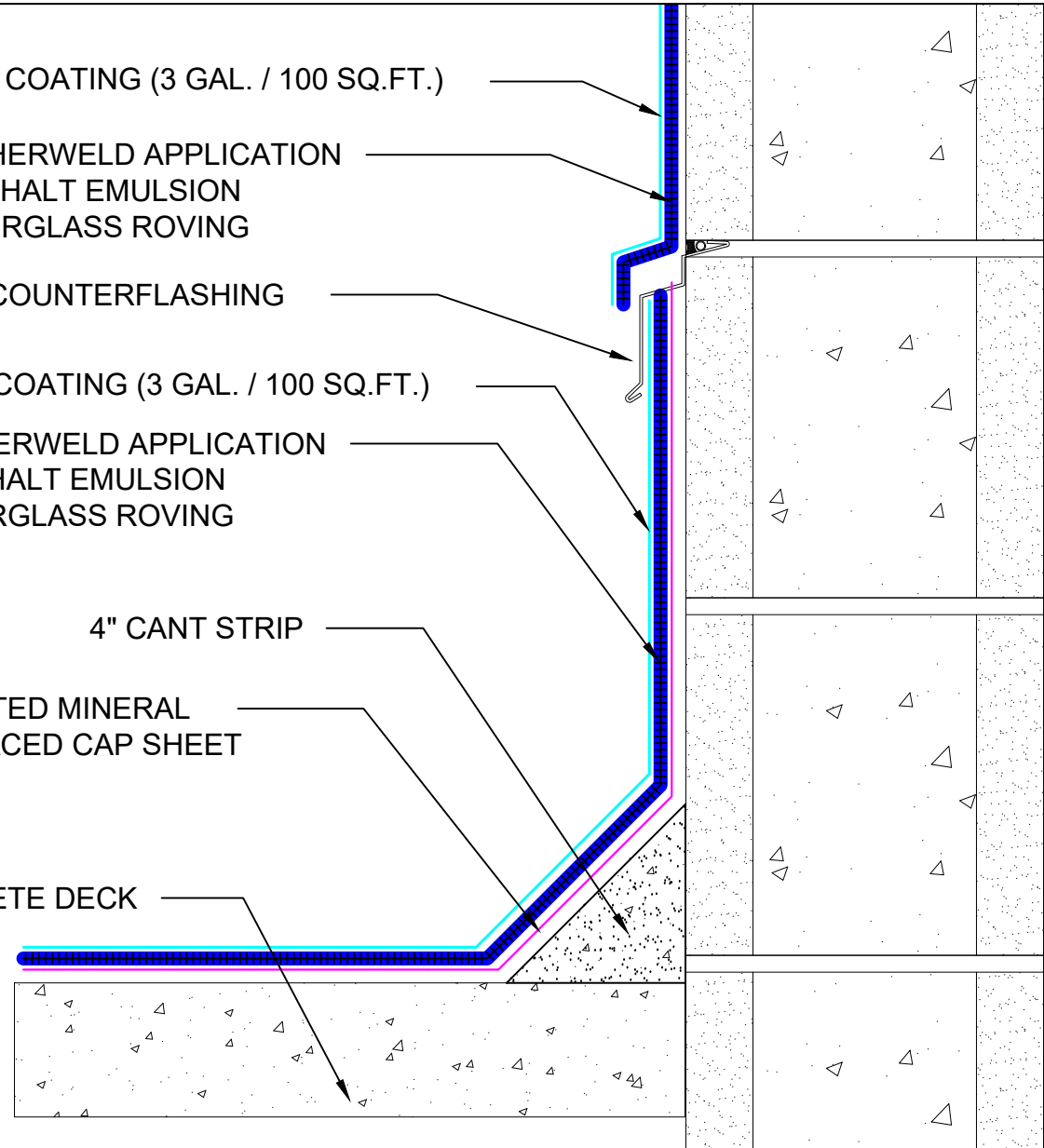
CA TITLE 24 COOL ROOF REFLECTIVE COATING (3 GAL. / 100 SQ.FT.)

NCNN-1B-16-30-A WEATHERWELD APPLICATION
30 GAL / 100 SQ. FT. ASPHALT EMULSION
16 LBS / 100 SQ. FT. FIBERGLASS ROVING

4" CANT STRIP

INVERTED MINERAL SURFACED CAP SHEET

EXISTING CONCRETE DECK



SYSTEM:

NCNN-1B-16-30-A

Composite Membrane Over
Concrete Deck

WEATHERWELD

A DIVISION OF LIQUIFORM TECHNOLOGIES, INC.

9757 7th Street, Suite 803
Rancho Cucamonga, CA 91730-5297
(888) 440-3224 | www.weatherweld.com

DRAWING TITLE:

**CMU WALL WITH EXISTING REGLET
COUNTERFLASHING**

DETAIL NUMBER:

304

PREPARED FOR:

DRAWN BY:
R. Weygant

PROJECT:

APPROVED BY:
M. Jones

INSTALLED BY:
TBD

DATE:
1/24/24

SCALE:
3" = 1'-0"

CA TITLE 24 COOL ROOF REFLECTIVE COATING (3 GAL. / 100 SQ.FT.)

NCNN-1B-16-30-A WEATHERWELD APPLICATION
30 GAL / 100 SQ. FT. ASPHALT EMULSION
16 LBS / 100 SQ. FT. FIBERGLASS ROVING

EXISTING COUNTERFLASHING

CA TITLE 24 COOL ROOF REFLECTIVE COATING (3 GAL. / 100 SQ.FT.)

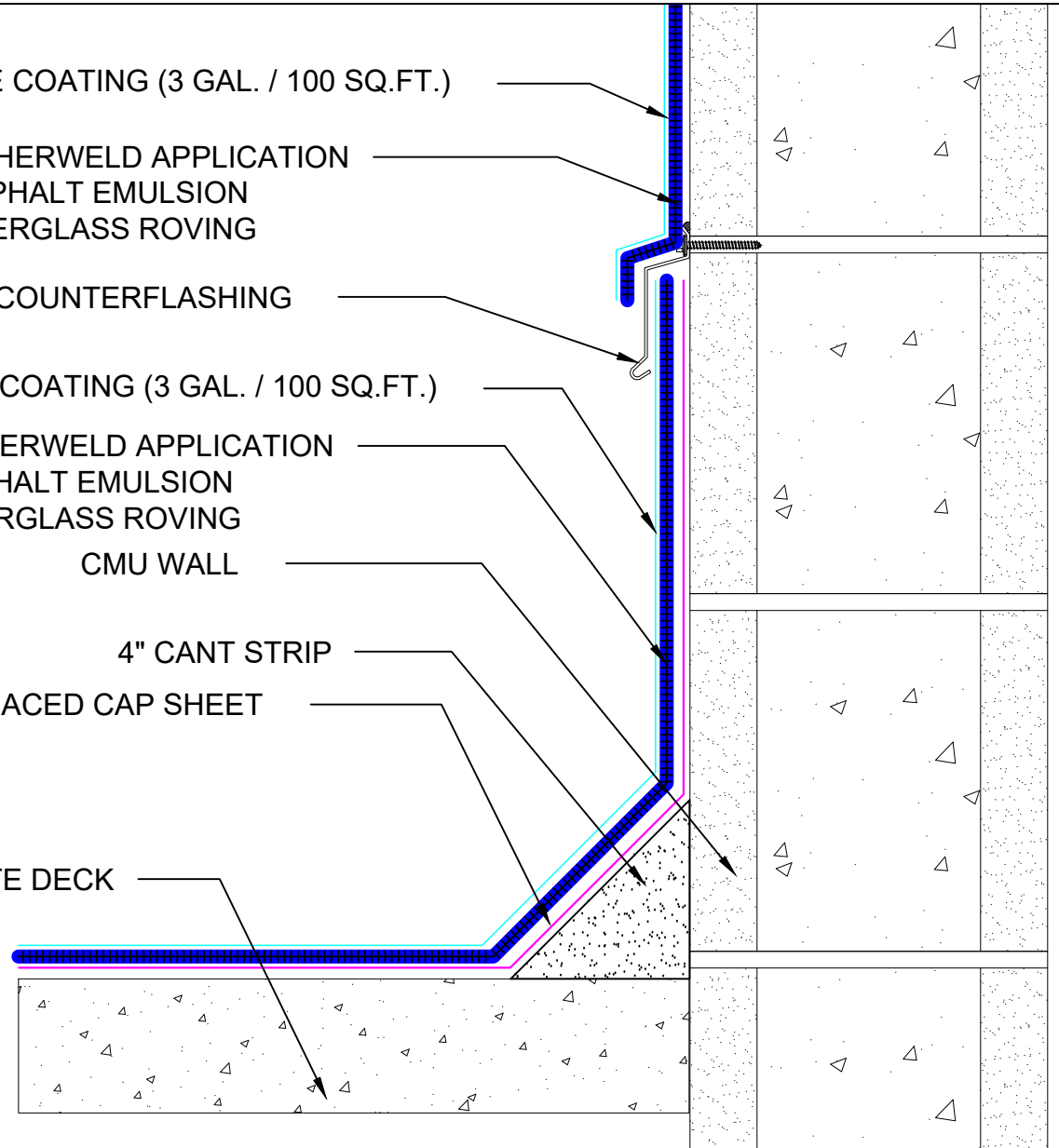
NCNN-1B-16-30-A WEATHERWELD APPLICATION
30 GAL / 100 SQ. FT. ASPHALT EMULSION
16 LBS / 100 SQ. FT. FIBERGLASS ROVING

CMU WALL

4" CANT STRIP

INVERTED MINERAL SURFACED CAP SHEET

EXISTING CONCRETE DECK



SYSTEM:

NCNN-1B-16-30-A

Composite Membrane Over
Concrete Deck

WEATHERWELD

A DIVISION OF LIQUIFORM TECHNOLOGIES, INC.

9757 7th Street, Suite 803
Rancho Cucamonga, CA 91730-5297
(888) 440-3224 | www.weatherweld.com

DRAWING TITLE:

**CMU WALL WITH EXISTING SURFACE
MOUNTED COUNTERFLASHING**

DETAIL NUMBER:

305

PREPARED FOR:

DRAWN BY:
R. Weygant

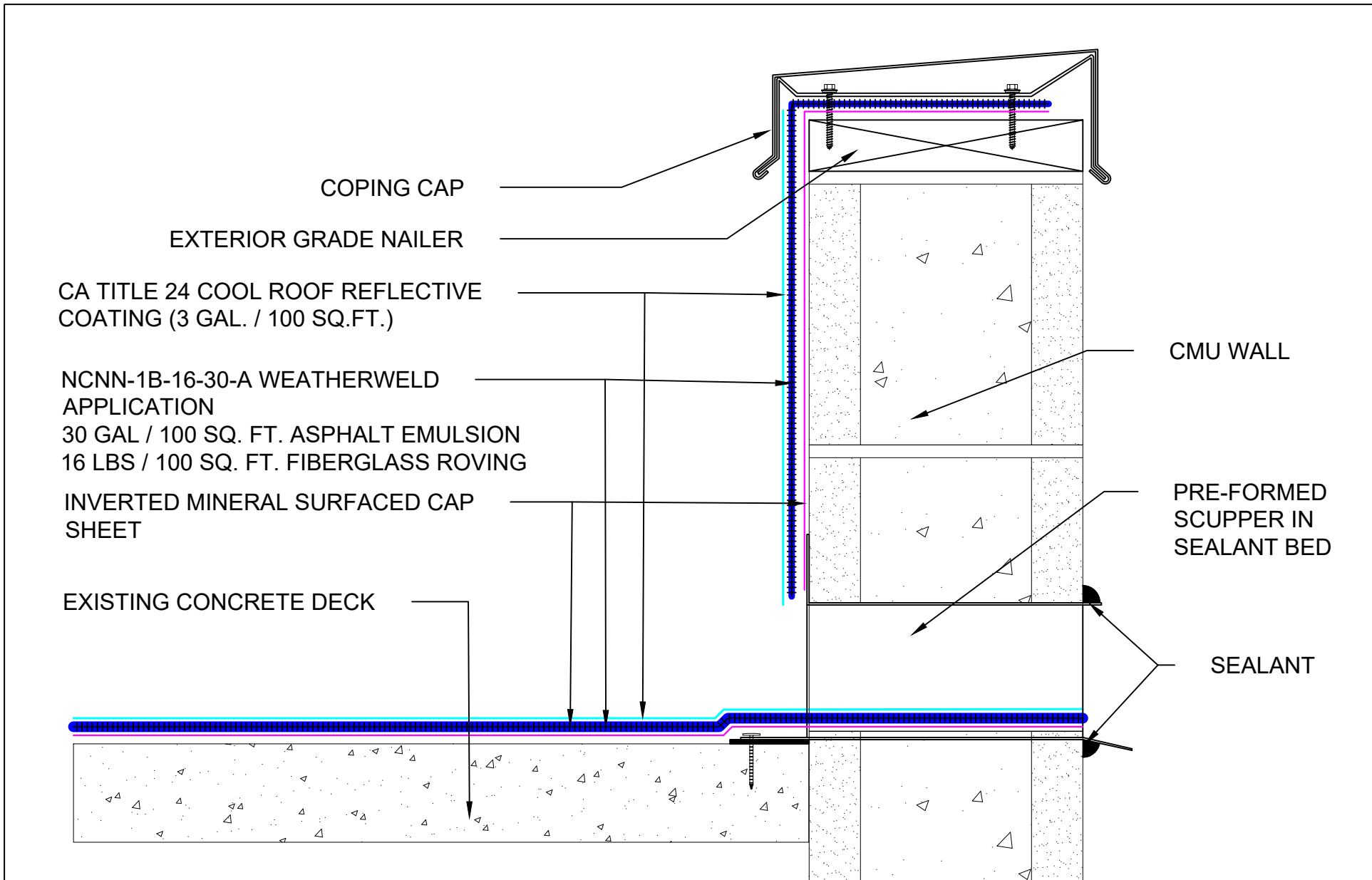
PROJECT:


APPROVED BY:
M. Jones

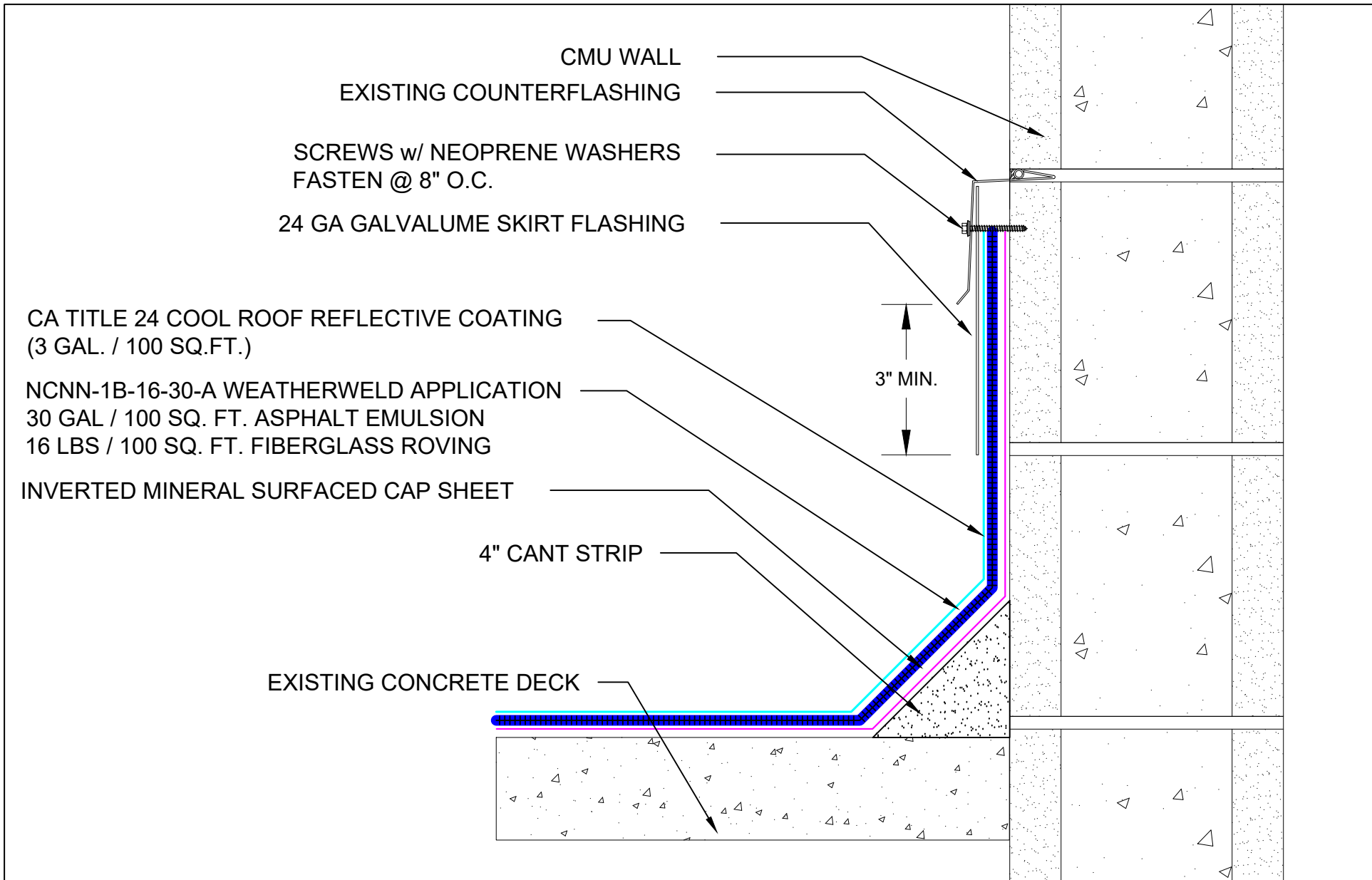
INSTALLED BY:
TBD

DATE:
1/24/24

SCALE:
3" = 1'-0"



SYSTEM:	 9757 7 th Street, Suite 803 Rancho Cucamonga, CA 91730-5297 (888) 440-3224 www.weatherweld.com <small>A DIVISION OF LIQUIFORM TECHNOLOGIES, INC.</small>	PREPARED FOR:			
NCNN-1B-16-30-A Composite Membrane Over Concrete Deck		DRAWING TITLE: THRU WALL SCUPPER FLASHING AT CMU	DETAIL NUMBER: 306	DRAWN BY: R. Weygant	PROJECT:
WALL		APPROVED BY: M. Jones	INSTALLED BY: TBD	DATE: 1/24/24	SCALE: 3" = 1'-0"



SYSTEM:
NCNN-1B-16-30-A
Composite Membrane Over
Concrete Deck

WEATHERWELD
A DIVISION OF LIQUIFORM TECHNOLOGIES, INC.

9757 7th Street, Suite 803
Rancho Cucamonga, CA 91730-5297
(888) 440-3224 | www.weatherweld.com

DRAWING TITLE:
SKIRTED COUNTERFLASHING AT CMU WALL

DETAIL NUMBER:
307

PREPARED FOR:

DRAWN BY:
R. Weygant

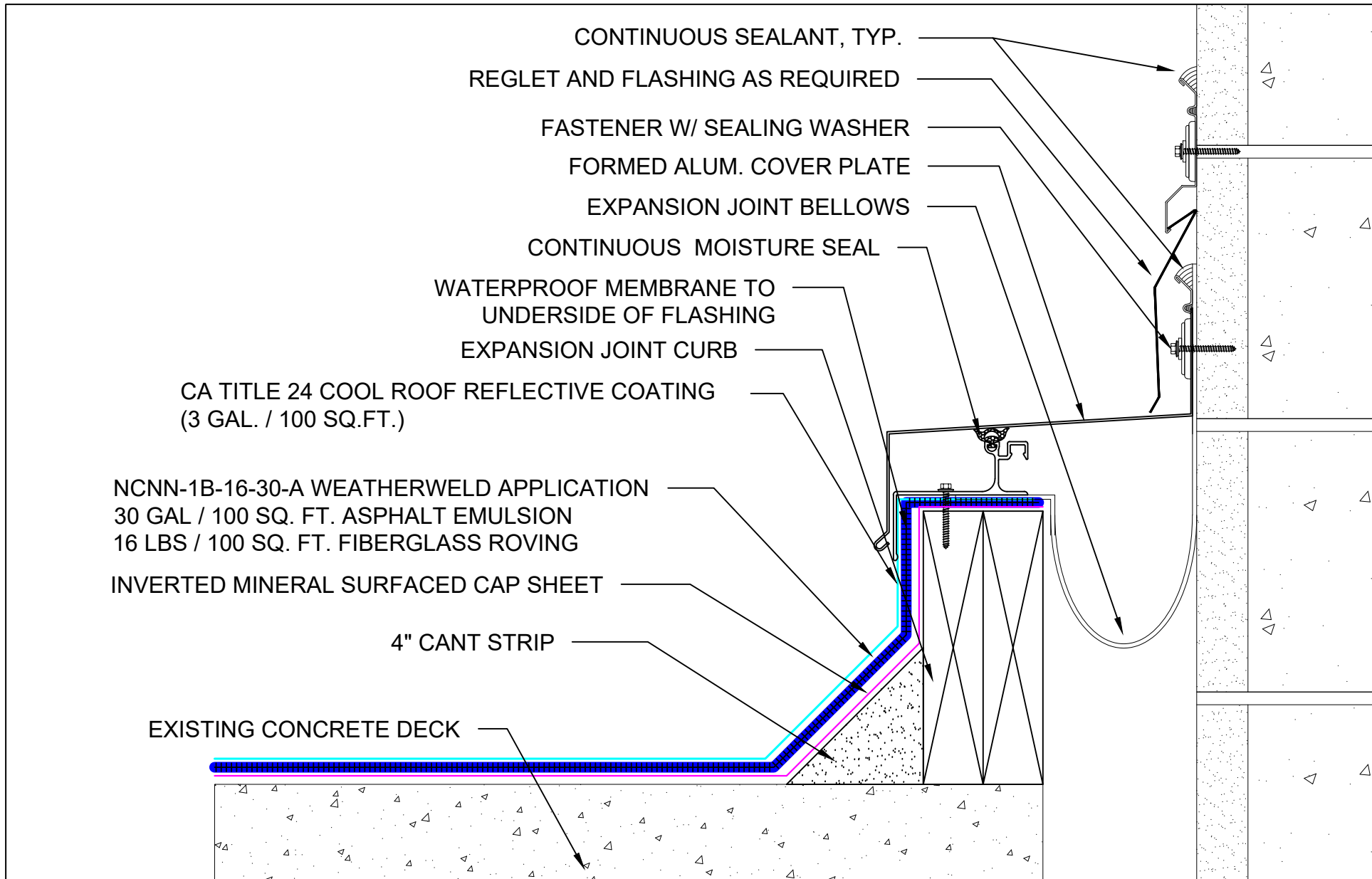
PROJECT:

APPROVED BY:
M. Jones

INSTALLED BY:
TBD

DATE:
1/24/24

SCALE:
3" = 1'-0"



<p>SYSTEM:</p> <p>NCNN-1B-16-30-A</p> <p>Composite Membrane Over Concrete Deck</p>	<p>WEATHERWELD A DIVISION OF LIQUIFORM TECHNOLOGIES, INC.</p> <p>9757 7th Street, Suite 803 Rancho Cucamonga, CA 91730-5297 (888) 440-3224 www.weatherweld.com</p>	<p>PREPARED FOR:</p>			
<p>DRAWING TITLE:</p> <p>EXPANSION JOINT AT CMU WALL</p>	<p>DETAIL NUMBER:</p> <p>308</p>	<p>DRAWN BY:</p> <p>R. Weygant</p>	<p>PROJECT:</p>		
		<p>APPROVED BY:</p> <p>M. Jones</p>	<p>INSTALLED BY:</p> <p>TBD</p>	<p>DATE:</p> <p>1/24/24</p>	<p>SCALE:</p> <p>3" = 1'-0"</p>

COPING CAP
 SCREWS w/ NEOPRENE WASHERS - FASTEN @ 8" O.C.

24 GA GALVALUME SKIRT FLASHING

EXTERIOR GRADE NAILER

CMU WALL

3" MIN.

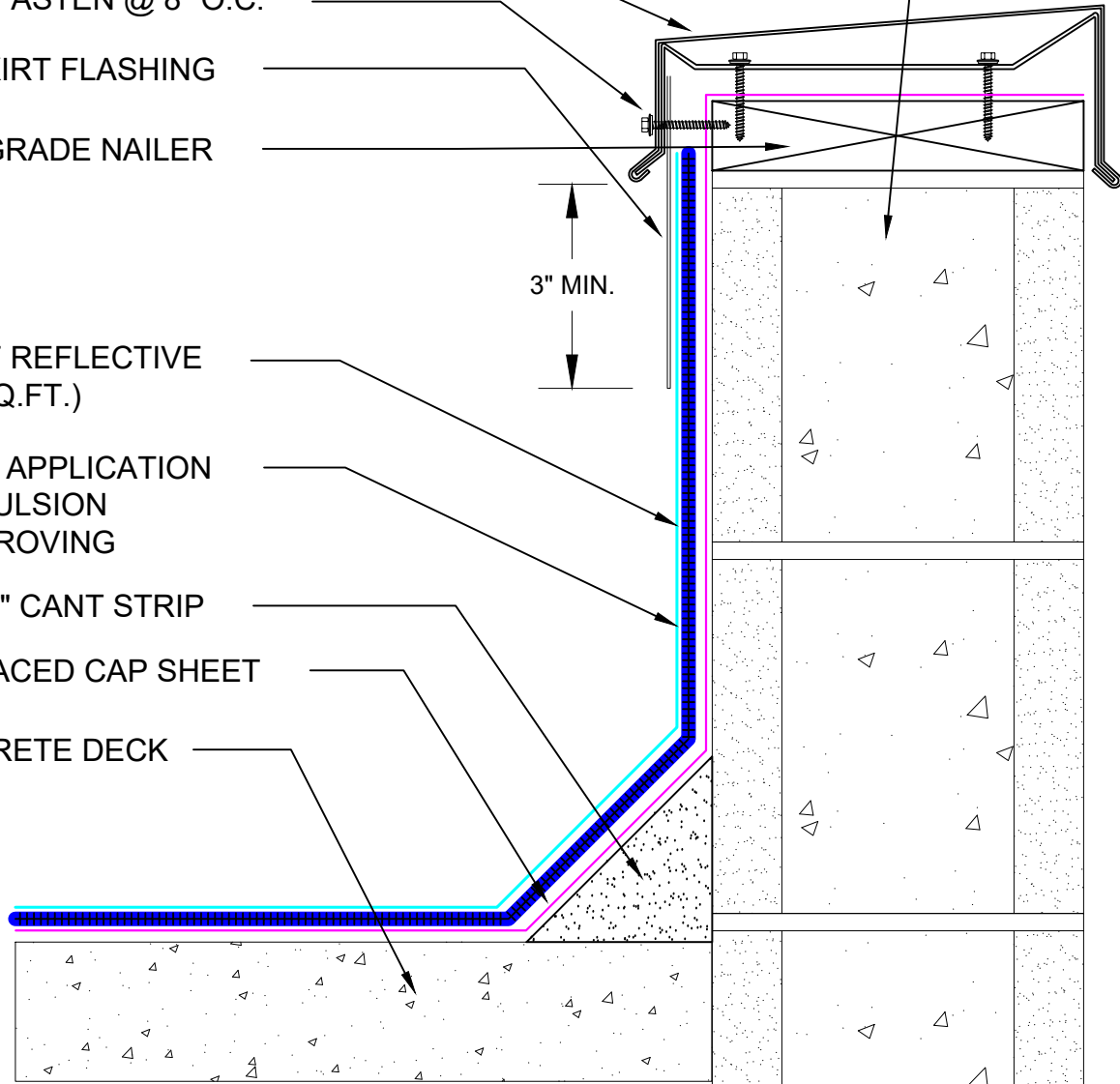
CA TITLE 24 COOL ROOF REFLECTIVE
 COATING (3 GAL. / 100 SQ.FT.)

NCNN-1B-16-30-A WEATHERWELD APPLICATION
 30 GAL / 100 SQ. FT. ASPHALT EMULSION
 16 LBS / 100 SQ. FT. FIBERGLASS ROVING

4" CANT STRIP

INVERTED MINERAL SURFACED CAP SHEET

EXISTING CONCRETE DECK



SYSTEM:

NCNN-1B-16-30-A

Composite Membrane Over
 Concrete Deck

WEATHERWELD

A DIVISION OF LIQUIFORM TECHNOLOGIES, INC.

9757 7th Street, Suite 803
 Rancho Cucamonga, CA 91730-5297
 (888) 440-3224 | www.weatherweld.com

PREPARED FOR:

DRAWING TITLE:

SKIRTED COPING DETAIL AT CMU WALL

DETAIL NUMBER:

309

DRAWN BY:

R. Weygant

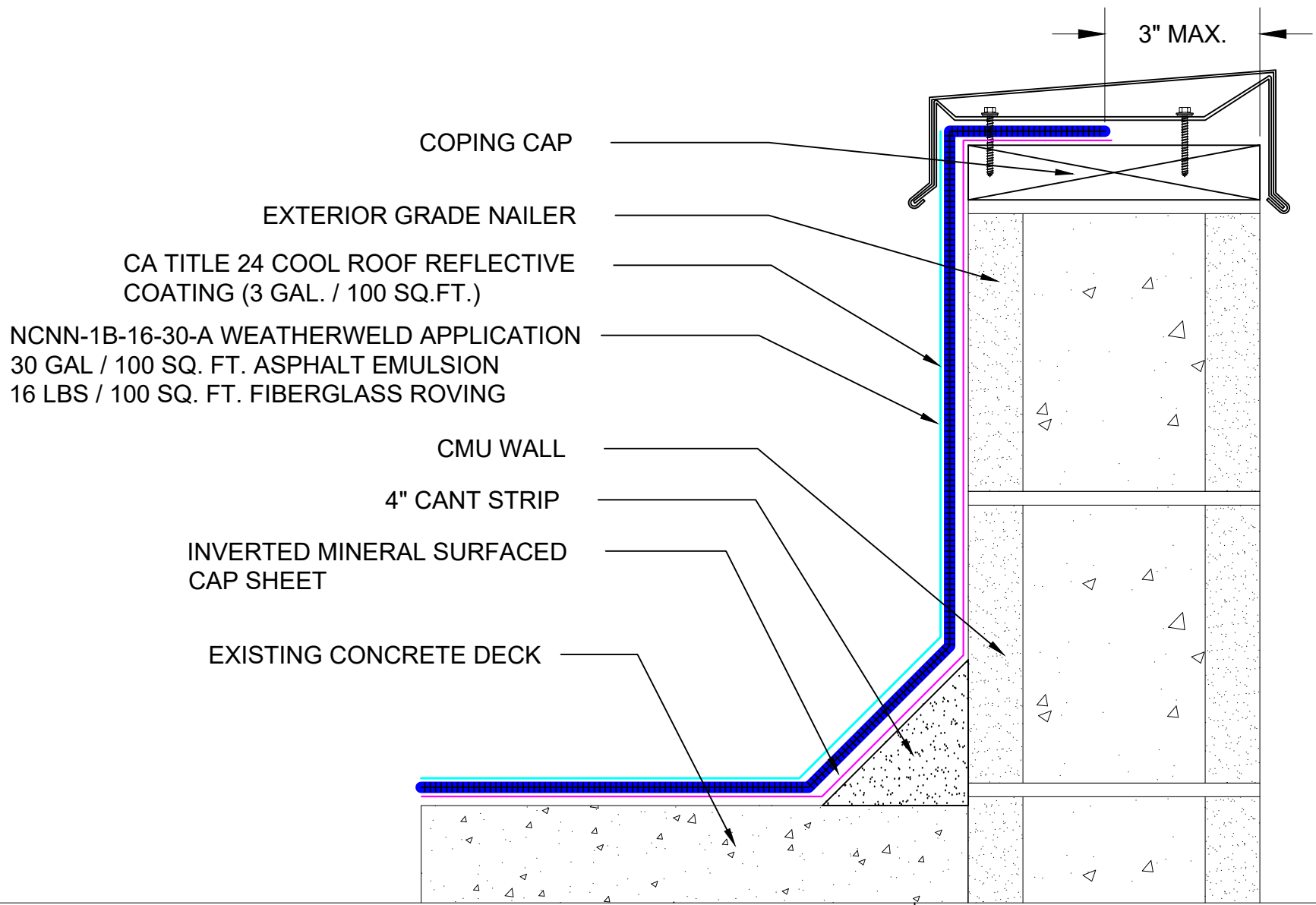
PROJECT:

APPROVED BY:
M. Jones

INSTALLED BY:
TBD

DATE:
1/24/24

SCALE:
3" = 1'-0"



- COPING CAP
- EXTERIOR GRADE NAILER
- CA TITLE 24 COOL ROOF REFLECTIVE COATING (3 GAL. / 100 SQ.FT.)
- NCNN-1B-16-30-A WEATHERWELD APPLICATION
30 GAL / 100 SQ. FT. ASPHALT EMULSION
16 LBS / 100 SQ. FT. FIBERGLASS ROVING
- CMU WALL
- 4" CANT STRIP
- INVERTED MINERAL SURFACED CAP SHEET
- EXISTING CONCRETE DECK

3" MAX.

SYSTEM:
NCNN-1B-16-30-A
Composite Membrane Over
Concrete Deck



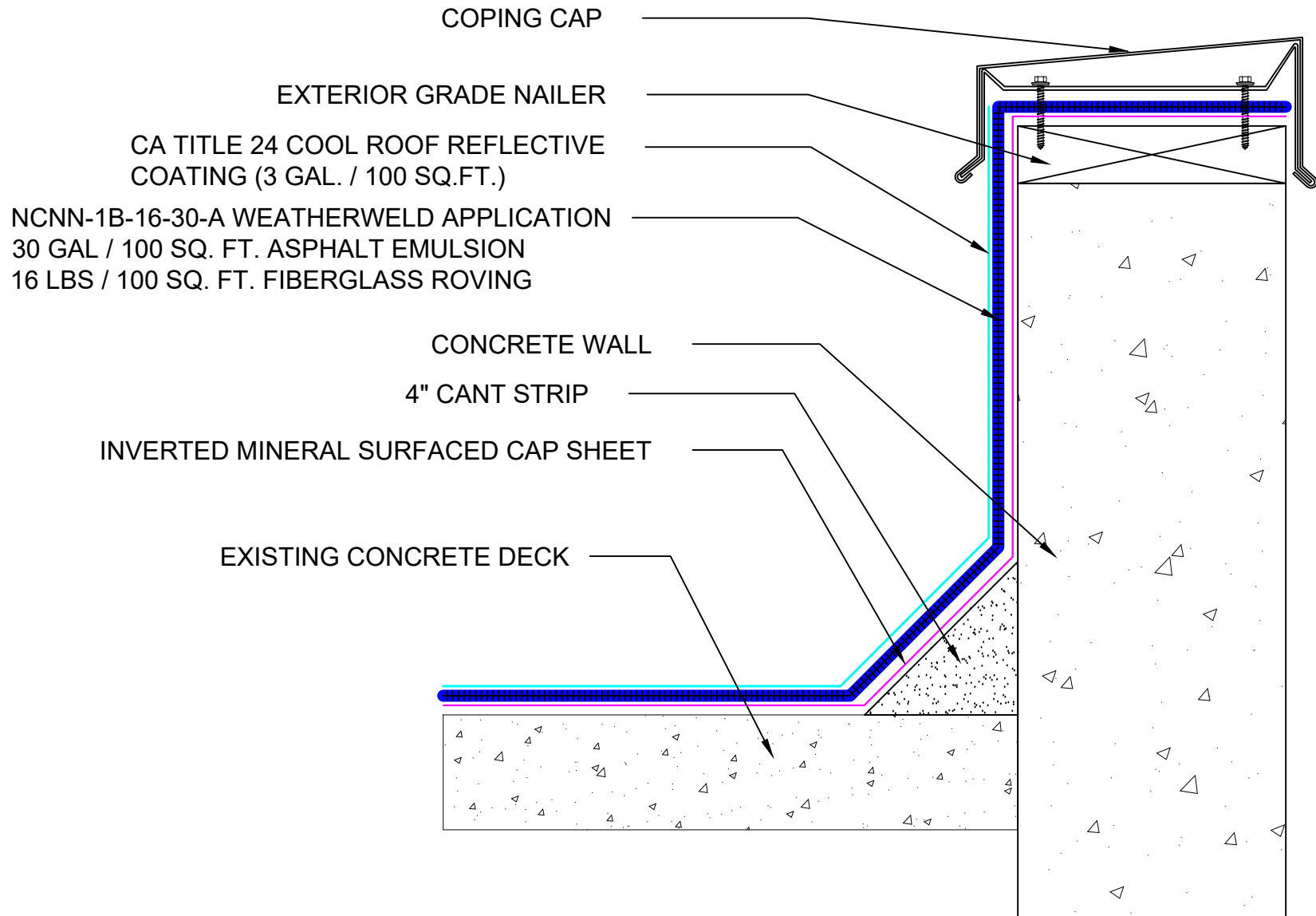
9757 7th Street, Suite 803
Rancho Cucamonga, CA 91730-5297
(888) 440-3224 | www.weatherweld.com

PREPARED FOR:

DRAWING TITLE:
COPING DETAIL AT CMU WALL (ALT)

DETAIL NUMBER:
310

DRAWN BY: R. Weygant	PROJECT:		
APPROVED BY: M. Jones	INSTALLED BY: TBD	DATE: 1/24/24	SCALE: 3" = 1'-0"



SYSTEM:

NCNN-1B-16-30-A

Composite Membrane Over
Concrete Deck

WEATHERWELD

A DIVISION OF LIQUIFORM TECHNOLOGIES, INC.

9757 7th Street, Suite 803
Rancho Cucamonga, CA 91730-5297
(888) 440-3224 | www.weatherweld.com

PREPARED FOR:

DRAWING TITLE:

COPING CAP FLASHING AT CONCRETE WALL

DETAIL NUMBER:

351

DRAWN BY:

R. Weygant

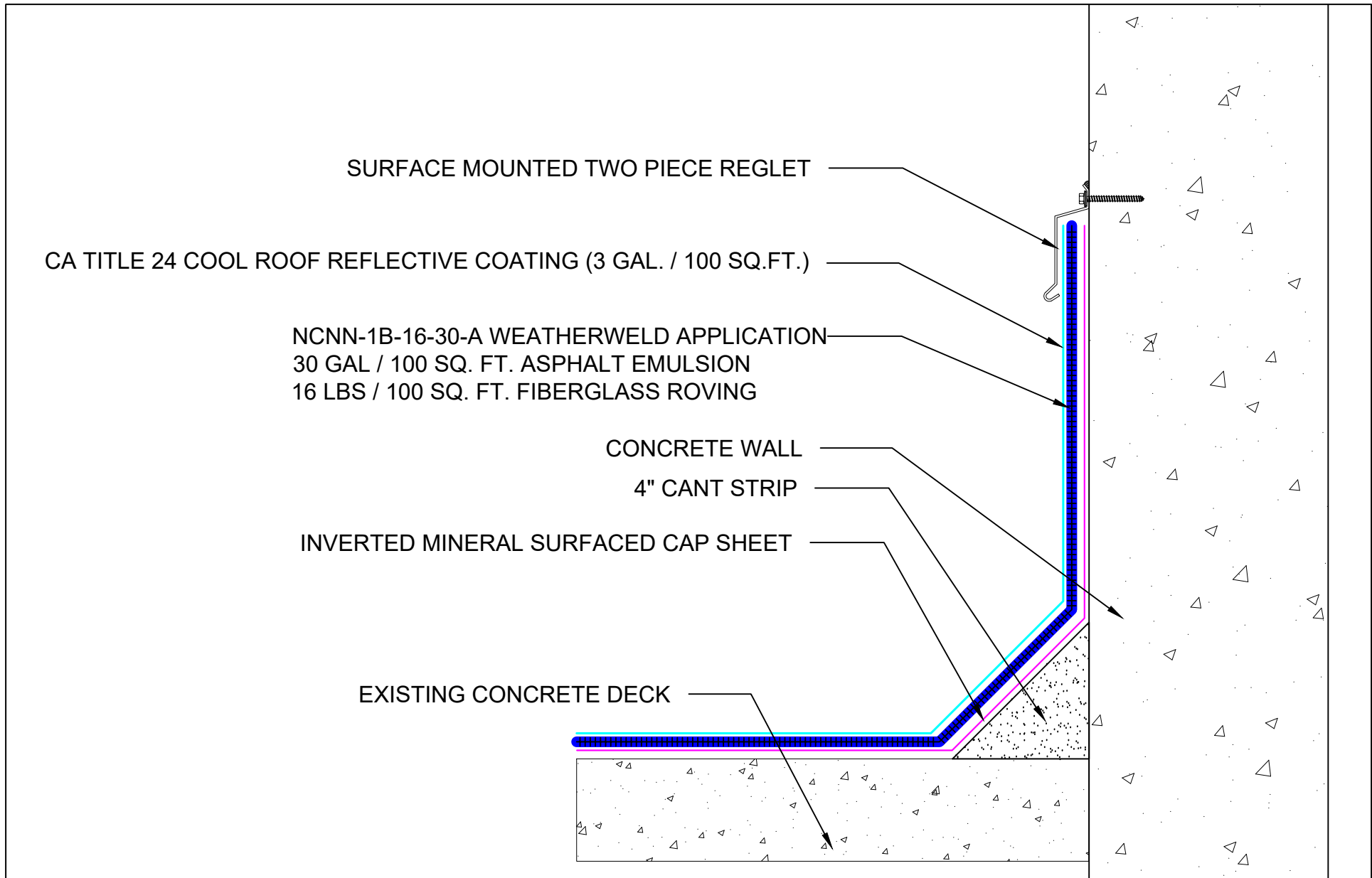
PROJECT:


APPROVED BY:
M. Jones

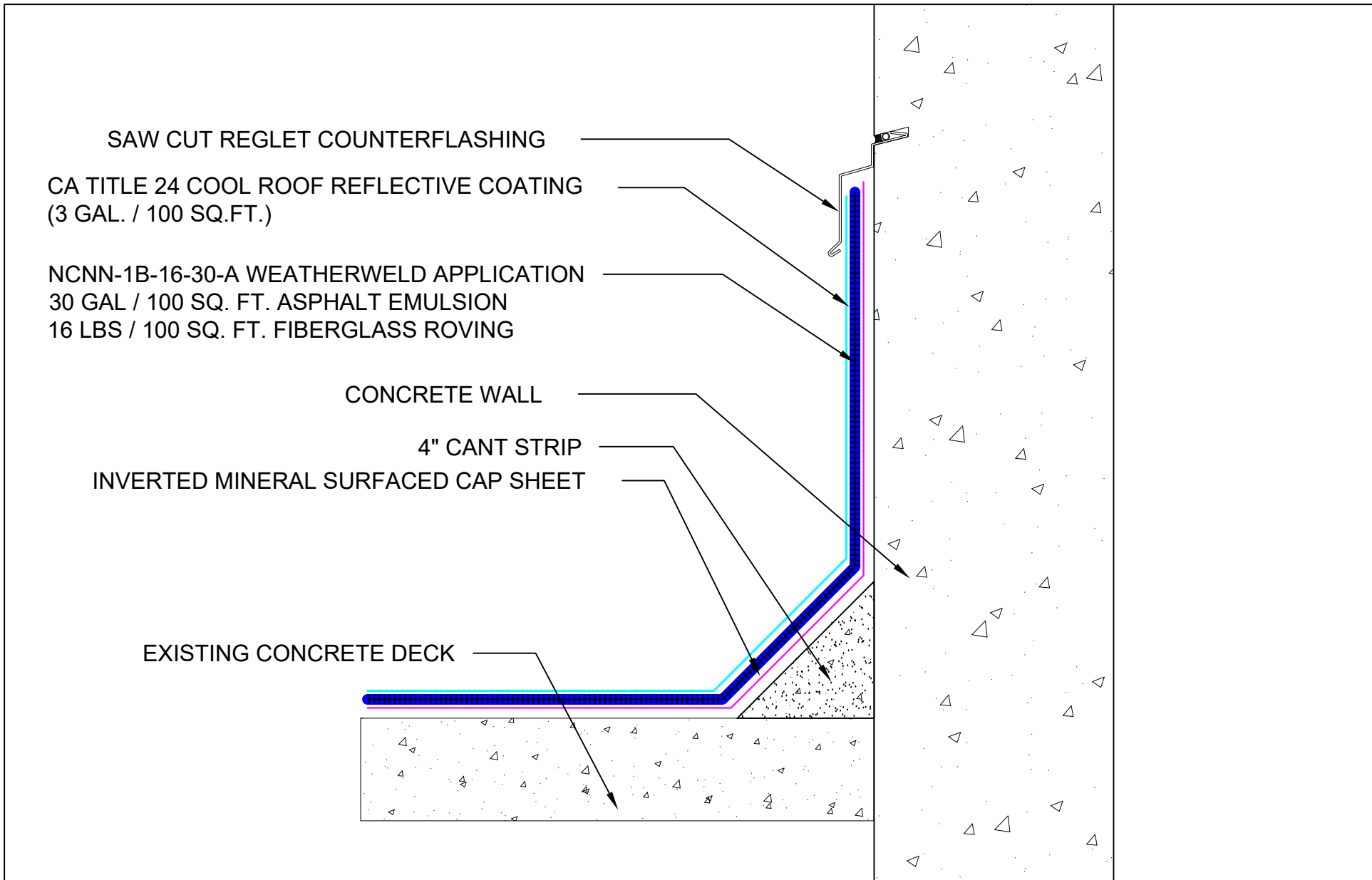
INSTALLED BY:
TBD

DATE:
1/24/24

SCALE:
3" = 1'-0"



SYSTEM: NCNN-1B-16-30-A Composite Membrane Over Concrete Deck	 <small>A DIVISION OF LIQUIFORM TECHNOLOGIES, INC.</small>	9757 7 th Street, Suite 803 Rancho Cucamonga, CA 91730-5297 (888) 440-3224 www.weatherweld.com		PREPARED FOR:	
		DRAWING TITLE: SURFACE MOUNTED COUNTERFLASHING AT CONCRETE WALL	DETAIL NUMBER: 352	DRAWN BY: R. Weygant	PROJECT:
		APPROVED BY: M. Jones	INSTALLED BY: TBD	DATE: 1/24/24	SCALE: 3" = 1'-0"



SYSTEM:
NCNN-1B-16-30-A
Composite Membrane Over
Concrete Deck

WEATHERWELD
A DIVISION OF LIQUIFORM TECHNOLOGIES, INC.

9757 7th Street, Suite 803
Rancho Cucamonga, CA 91730-5297
(888) 440-3224 | www.weatherweld.com

DRAWING TITLE:
SAW CUT REGLET AT CONCRETE WALL

DETAIL NUMBER:
353

PREPARED FOR:

DRAWN BY:
R. Weygant

PROJECT:

APPROVED BY:
M. Jones

INSTALLED BY:
TBD

DATE:
1/24/24

SCALE:
3" = 1'-0"

CA TITLE 24 COOL ROOF REFLECTIVE COATING (3 GAL. / 100 SQ.FT.)

NCNN-1B-16-30-A WEATHERWELD APPLICATION
30 GAL / 100 SQ. FT. ASPHALT EMULSION
16 LBS / 100 SQ. FT. FIBERGLASS ROVING

EXISTING COUNTERFLASHING

CA TITLE 24 COOL ROOF REFLECTIVE COATING (3 GAL. / 100 SQ.FT.)

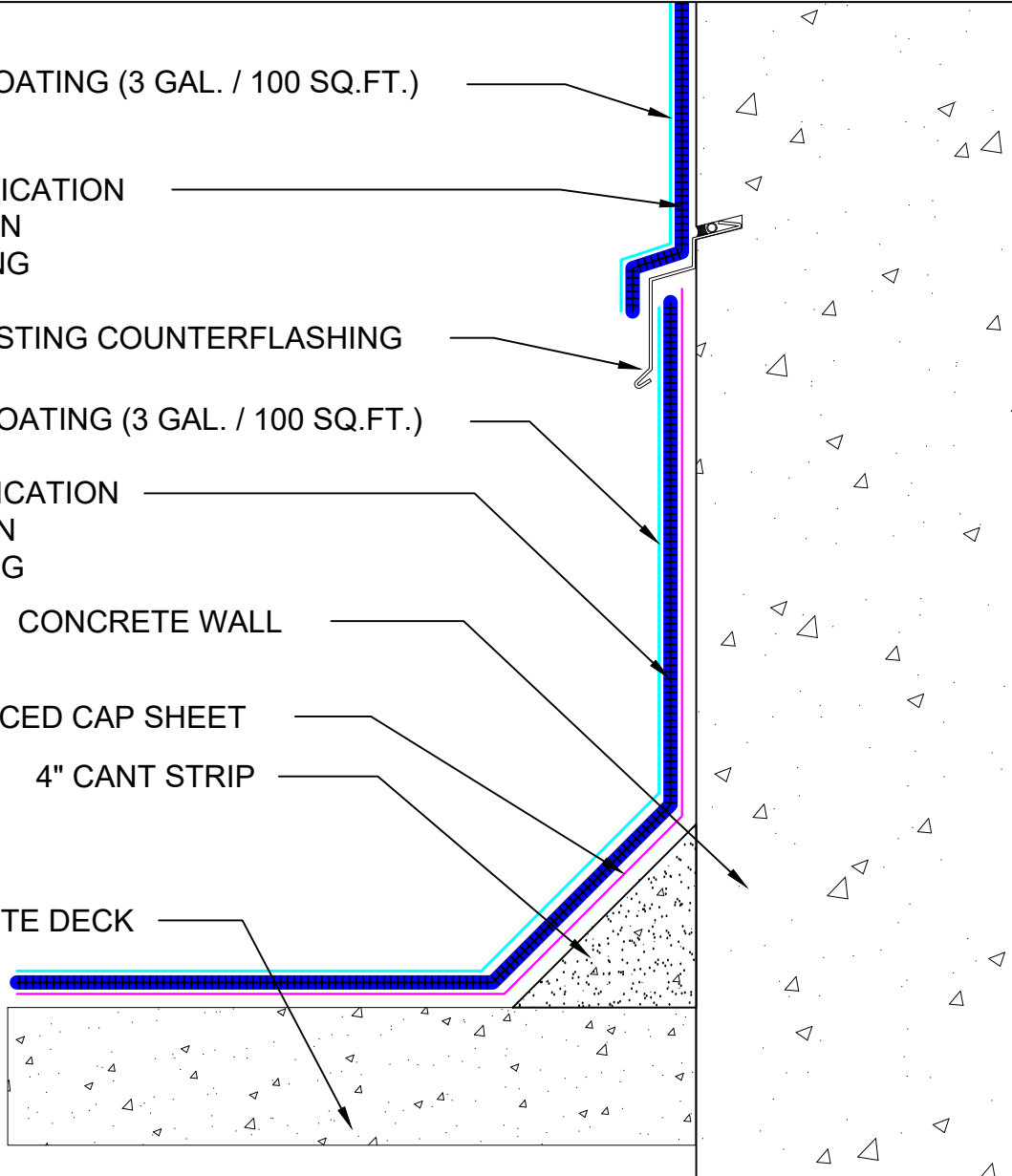
NCNN-1B-16-30-A WEATHERWELD APPLICATION
30 GAL / 100 SQ. FT. ASPHALT EMULSION
16 LBS / 100 SQ. FT. FIBERGLASS ROVING

CONCRETE WALL

INVERTED MINERAL SURFACED CAP SHEET

4" CANT STRIP

EXISTING CONCRETE DECK



SYSTEM:

NCNN-1B-16-30-A

Composite Membrane Over
Concrete Deck

WEATHERWELD

A DIVISION OF LIQUIFORM TECHNOLOGIES, INC.

9757 7th Street, Suite 803
Rancho Cucamonga, CA 91730-5297
(888) 440-3224 | www.weatherweld.com

DRAWING TITLE:

**CONCRETE WALL WITH EXISTING REGLET
COUNTERFLASHING**

DETAIL NUMBER:

354

PREPARED FOR:

DRAWN BY:
R. Weygant

PROJECT:

APPROVED BY:
M. Jones

INSTALLED BY:
TBD

DATE:
1/24/24

SCALE:
3" = 1'-0"

CA TITLE 24 COOL ROOF REFLECTIVE COATING (3 GAL. / 100 SQ.FT.)

NCNN-1B-16-30-A WEATHERWELD APPLICATION
30 GAL / 100 SQ. FT. ASPHALT EMULSION
16 LBS / 100 SQ. FT. FIBERGLASS ROVING

EXISTING COUNTERFLASHING

CA TITLE 24 COOL ROOF REFLECTIVE COATING (3 GAL. / 100 SQ.FT.)

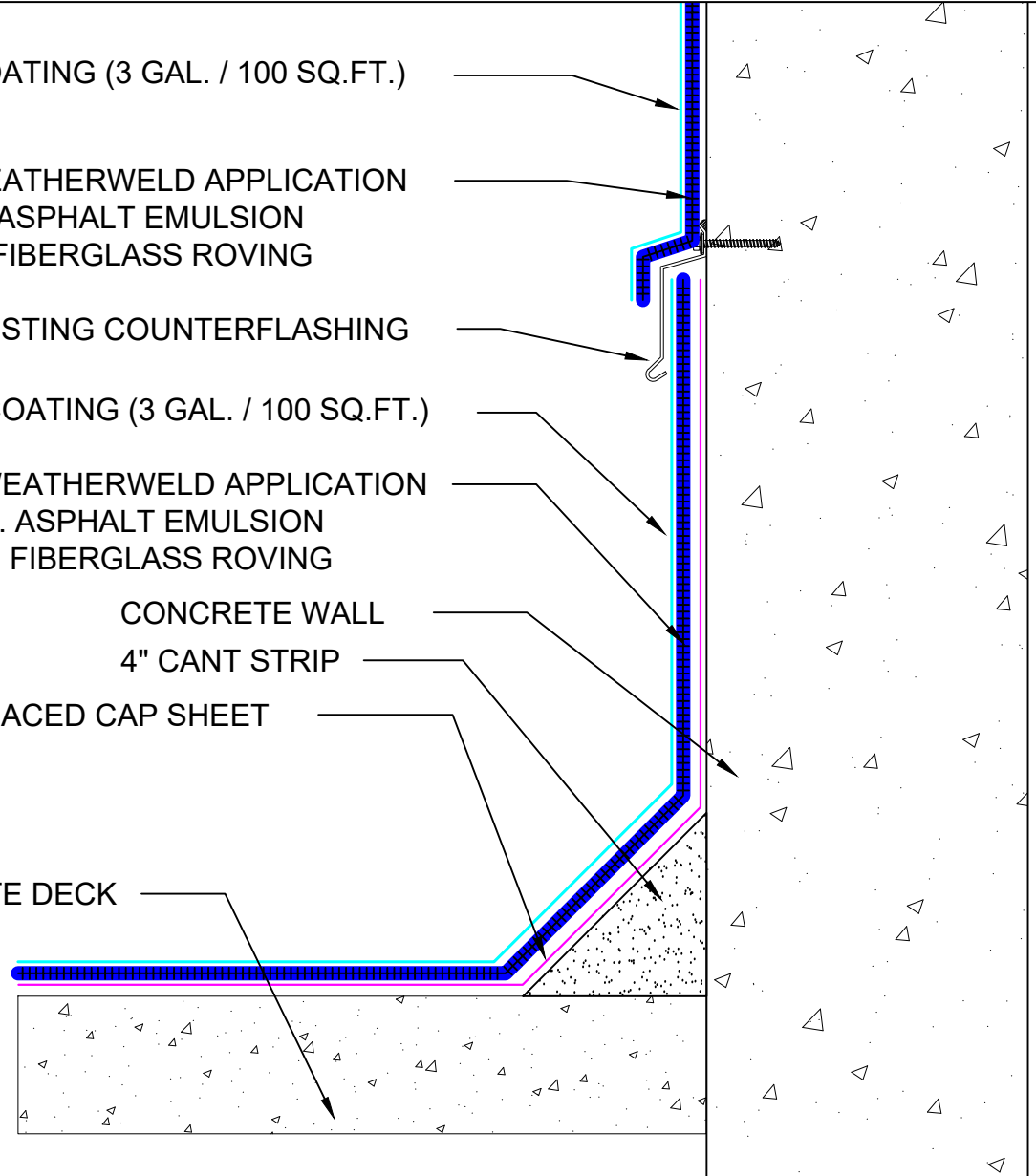
NCNN-1B-16-30-A WEATHERWELD APPLICATION
30 GAL / 100 SQ. FT. ASPHALT EMULSION
16 LBS / 100 SQ. FT. FIBERGLASS ROVING

CONCRETE WALL

4" CANT STRIP

INVERTED MINERAL SURFACED CAP SHEET

EXISTING CONCRETE DECK



SYSTEM:

NCNN-1B-16-30-A

Composite Membrane Over
Concrete Deck

WEATHERWELD

A DIVISION OF LIQUIFORM TECHNOLOGIES, INC.

9757 7th Street, Suite 803
Rancho Cucamonga, CA 91730-5297
(888) 440-3224 | www.weatherweld.com

PREPARED FOR:

DRAWING TITLE:

**CONCRETE WALL WITH EXISTING SURFACE
MOUNTED COUNTERFLASHING**

DETAIL NUMBER:

355

DRAWN BY:

R. Weygant

PROJECT:

APPROVED BY:

M. Jones

INSTALLED BY:

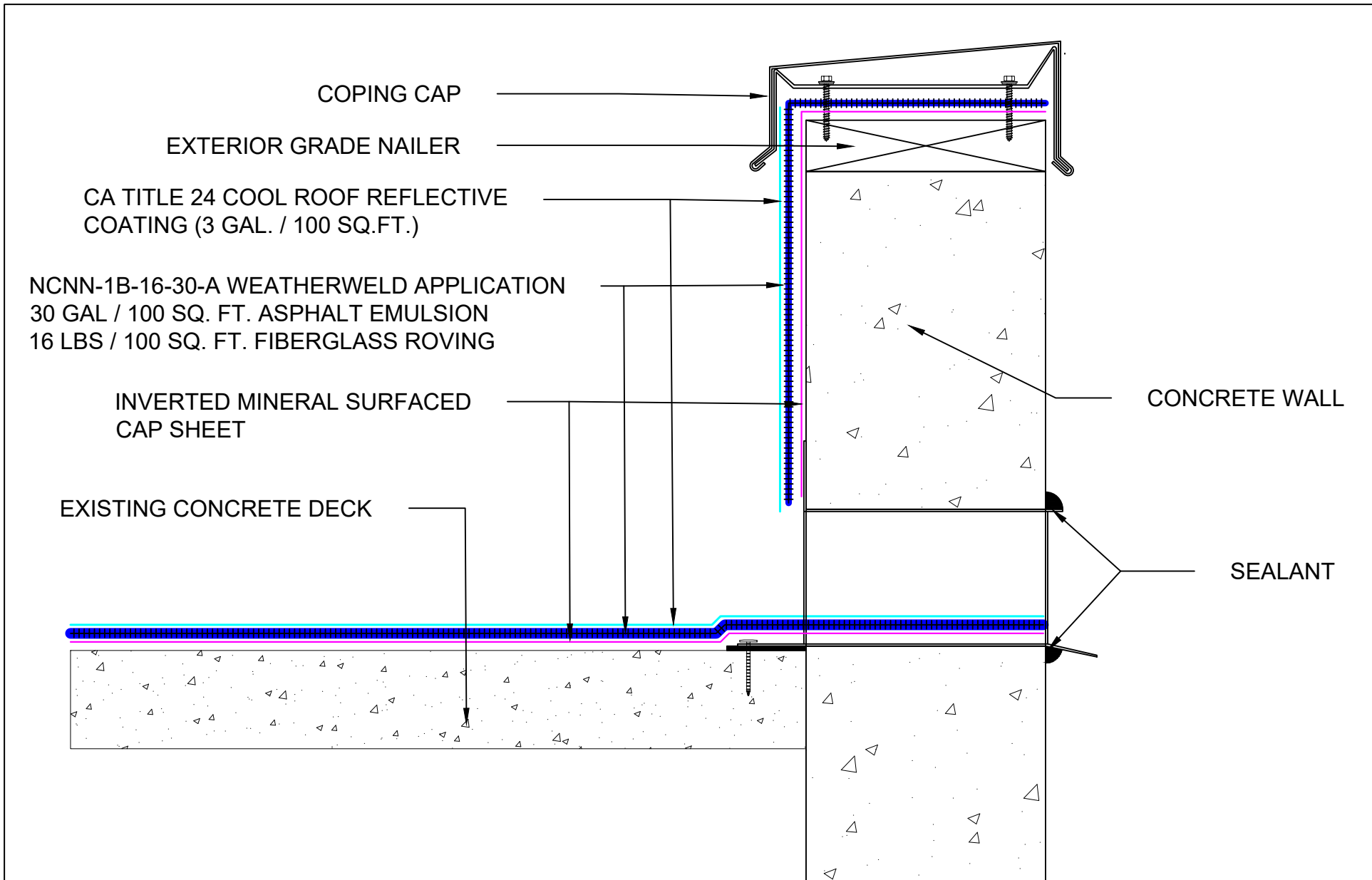
TBD


DATE:

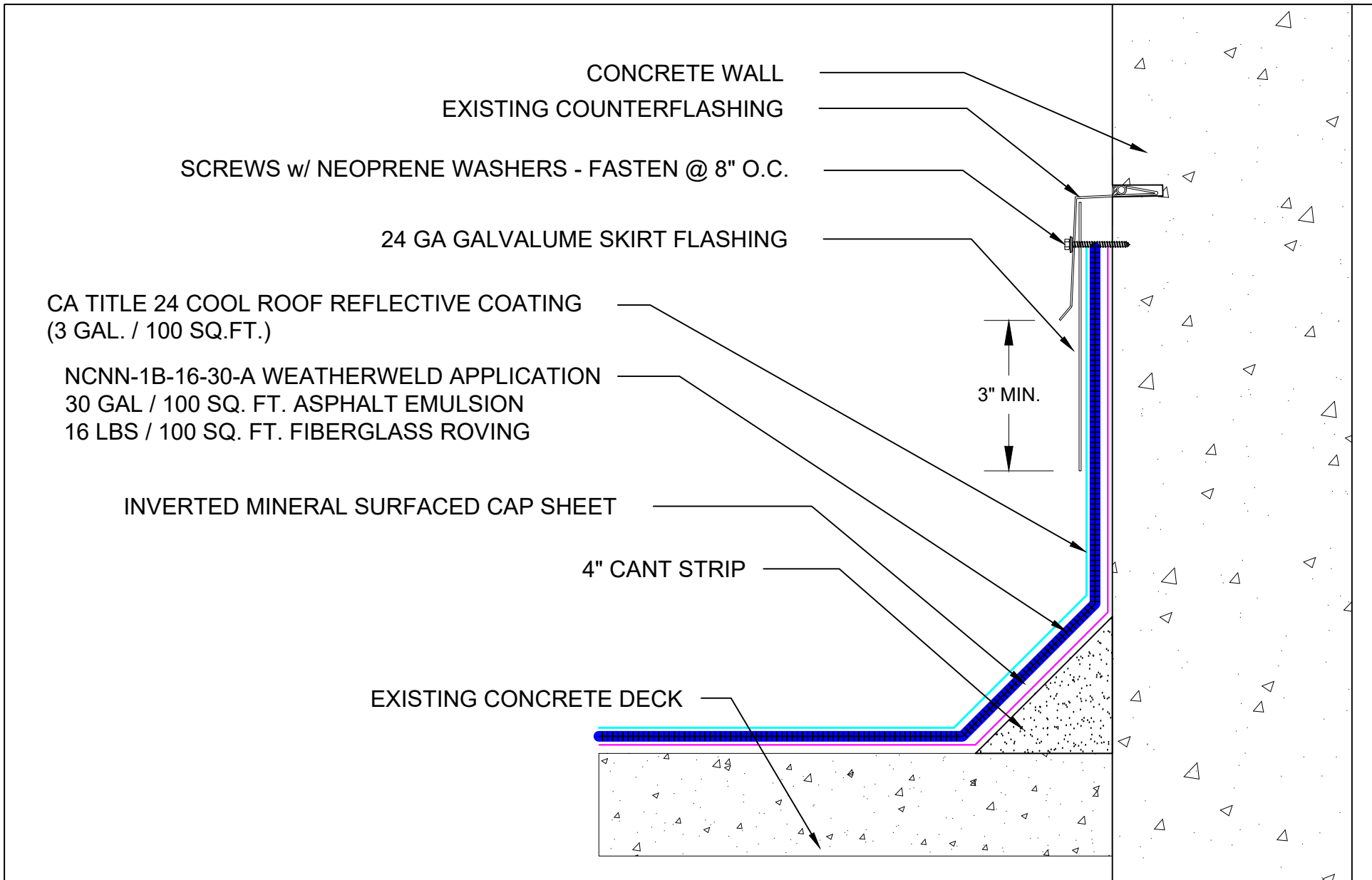
1/24/24

SCALE:

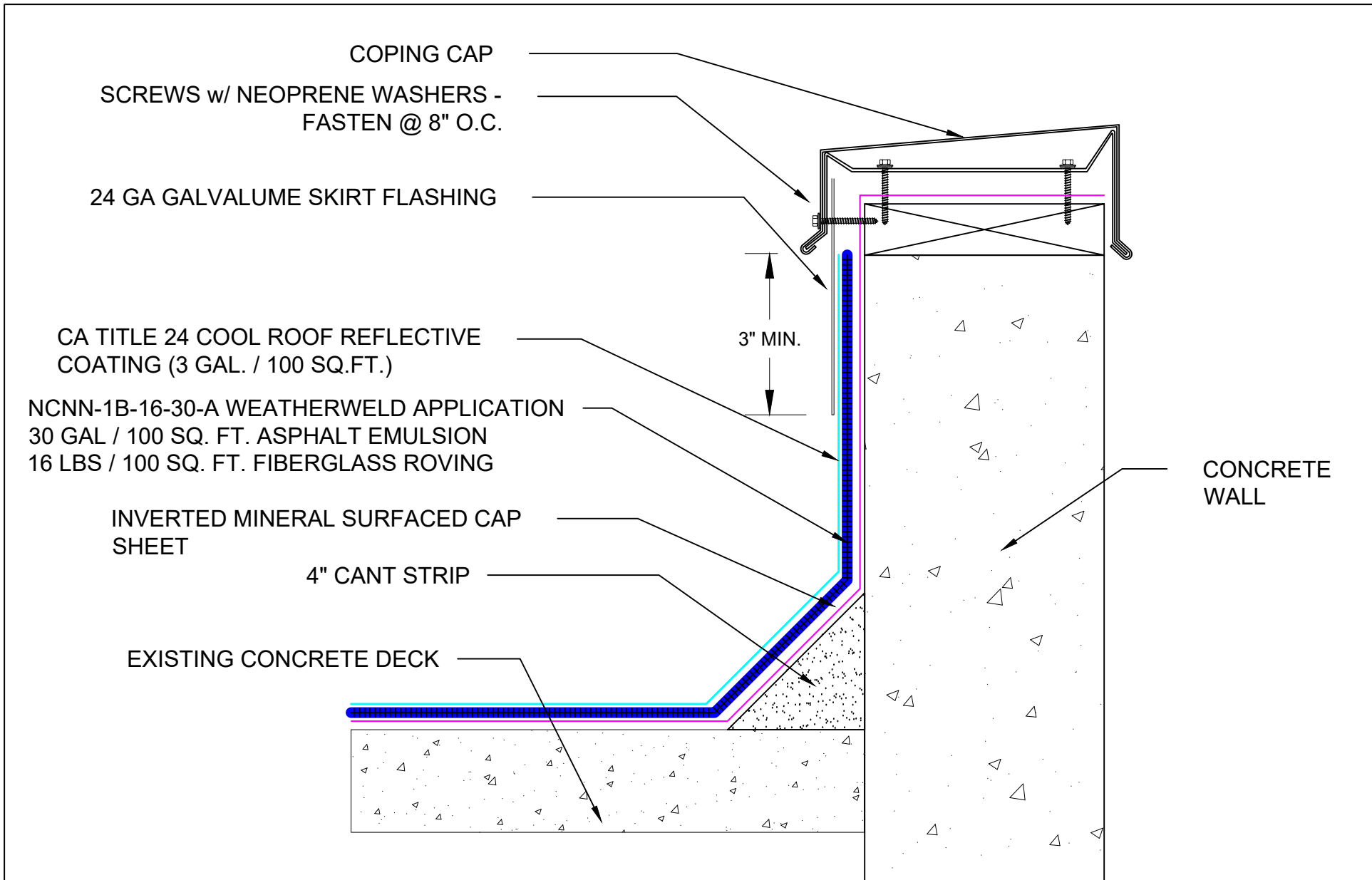
3" = 1'-0"



SYSTEM: NCNN-1B-16-30-A Composite Membrane Over Concrete Deck	 <small>A DIVISION OF LIQUIFORM TECHNOLOGIES, INC.</small>	9757 7 th Street, Suite 803 Rancho Cucamonga, CA 91730-5297 (888) 440-3224 www.weatherweld.com		PREPARED FOR:	
		DRAWING TITLE: THRU WALL SCUPPER FLASHING AT CONCRETE WALL	DETAIL NUMBER: 356	DRAWN BY: R. Weygant	PROJECT:
		APPROVED BY: M. Jones	INSTALLED BY: TBD	DATE: 1/24/24	SCALE: 3" = 1'-0"



<p>SYSTEM:</p> <p>NCNN-1B-16-30-A</p> <p>Composite Membrane Over Concrete Deck</p>	<p>WEATHERWELD</p> <p>A DIVISION OF LIQUIFORM TECHNOLOGIES, INC.</p> <p>9757 7th Street, Suite 803 Rancho Cucamonga, CA 91730-5297 (888) 440-3224 www.weatherweld.com</p> <p>DRAWING TITLE: SKIRTED COUNTERFLASHING AT CONCRETE WALL</p>	<p>PREPARED FOR:</p> <p>DRAWN BY: R. Weygant</p> <p>PROJECT:</p> <p>APPROVED BY: M. Jones</p> <p>INSTALLED BY: TBD</p> <p>DATE: 1/24/24</p> <p>SCALE: 3" = 1'-0"</p>
<p>DETAIL NUMBER: 357</p>		



SYSTEM:
NCNN-1B-16-30-A
Composite Membrane Over
Concrete Deck

WEATHERWELD
A DIVISION OF LIQUIFORM TECHNOLOGIES, INC.

9757 7th Street, Suite 803
Rancho Cucamonga, CA 91730-5297
(888) 440-3224 | www.weatherweld.com

DRAWING TITLE:
SKIRTED COPING AT CONCRETE WALL

DETAIL NUMBER:
359

PREPARED FOR:

DRAWN BY:
R. Weygant

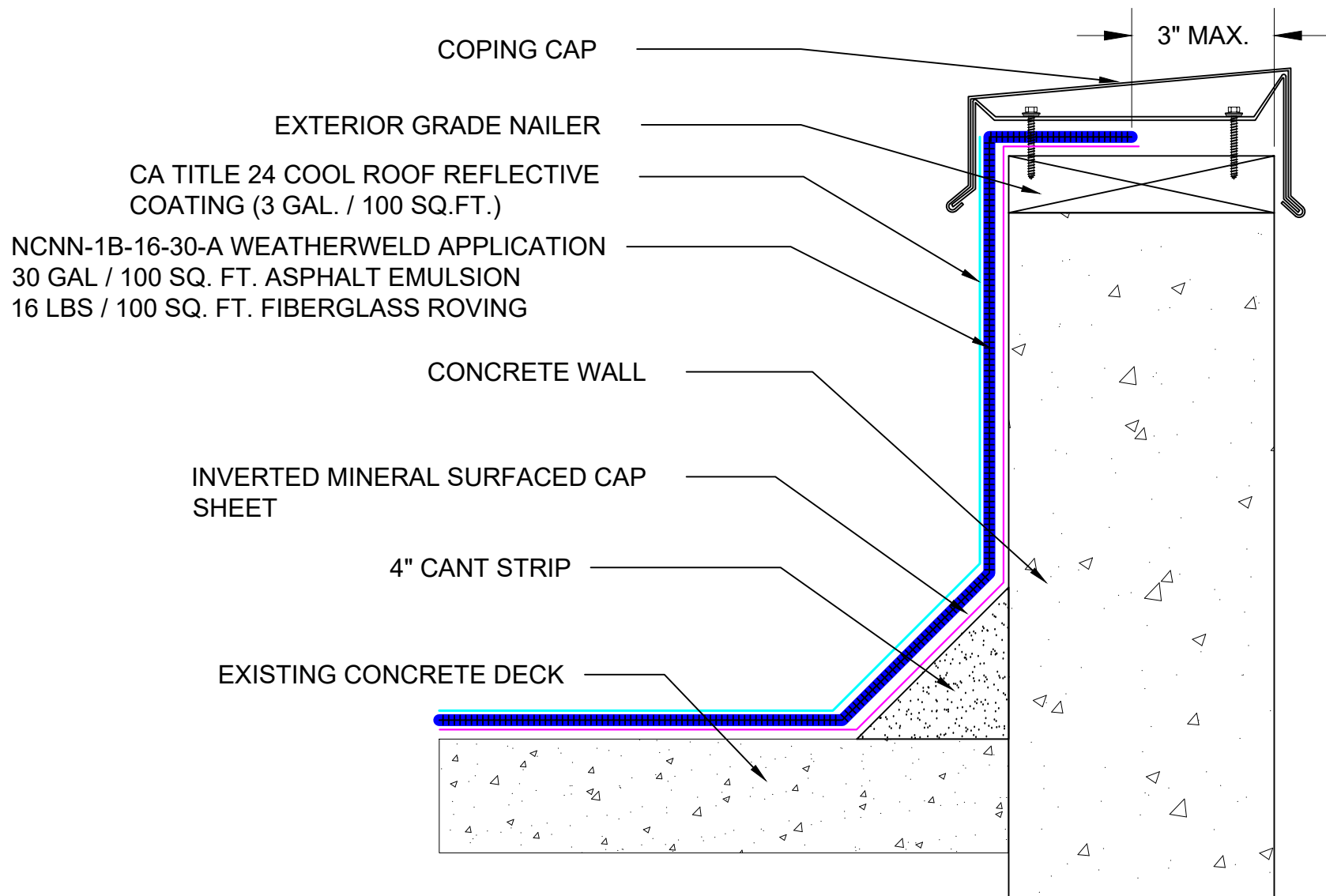
PROJECT:

APPROVED BY:
M. Jones

INSTALLED BY:
TBD

DATE:
1/24/24

SCALE:
3" = 1'-0"



SYSTEM:

NCNN-1B-16-30-A

Composite Membrane Over
Concrete Deck

WEATHERWELD

A DIVISION OF LIQUIFORM TECHNOLOGIES, INC.

9757 7th Street, Suite 803
Rancho Cucamonga, CA 91730-5297
(888) 440-3224 | www.weatherweld.com

DRAWING TITLE:

COPING DETAIL AT CONCRETE WALL (ALT)

DETAIL NUMBER:

360

PREPARED FOR:

DRAWN BY:

R. Weygant

PROJECT:

APPROVED BY:
M. Jones

INSTALLED BY:
TBD

DATE:

1/24/24

SCALE:

3" = 1'-0"

EXPANSION JOINT COVER - INSTALLED IN ACCORDANCE WITH
MANUFACTURER'S RECOMMENDATIONS

EXPANSION JOINT CURB

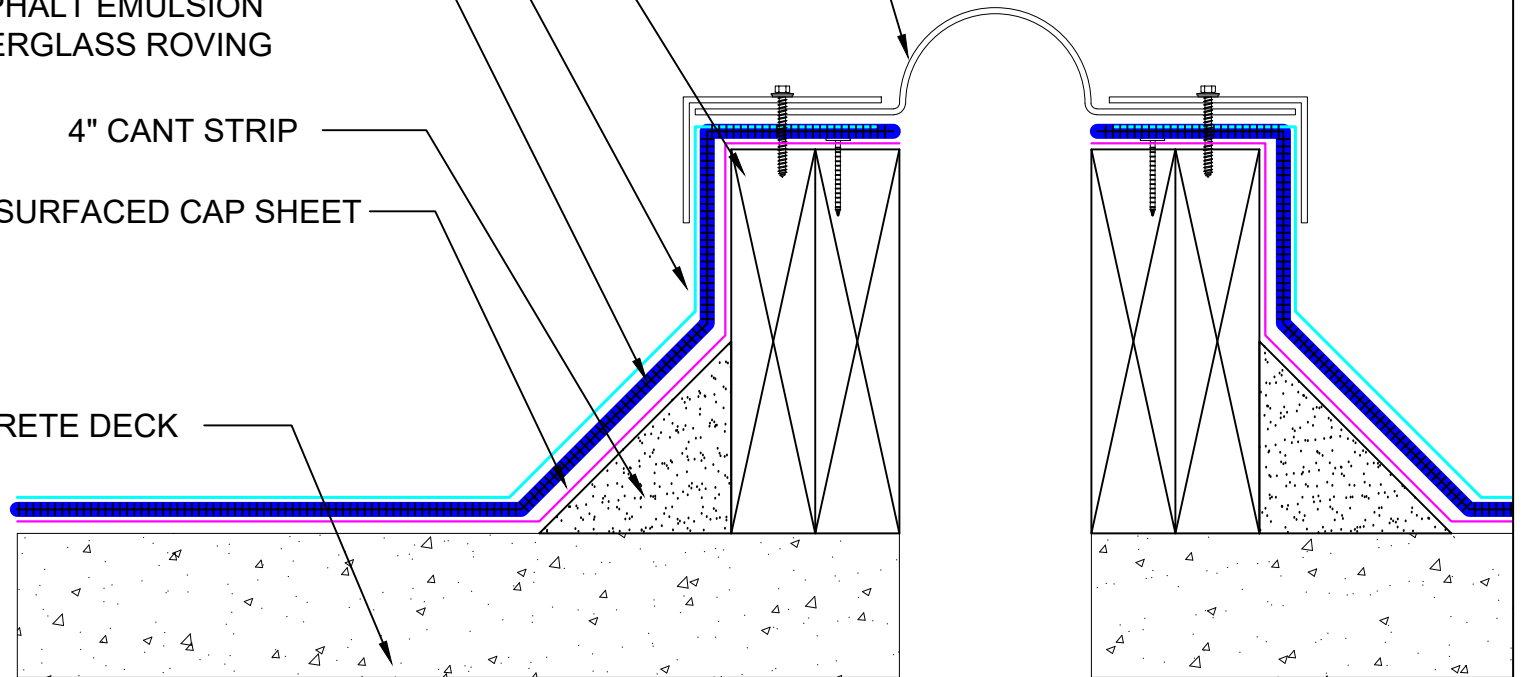
CA TITLE 24 COOL ROOF REFLECTIVE
COATING (3 GAL. / 100 SQ.FT.)

NCNN-1B-16-30-A WEATHERWELD APPLICATION
30 GAL / 100 SQ. FT. ASPHALT EMULSION
16 LBS / 100 SQ. FT. FIBERGLASS ROVING

4" CANT STRIP

INVERTED MINERAL SURFACED CAP SHEET

EXISTING CONCRETE DECK



SYSTEM:

NCNN-1B-16-30-A

Composite Membrane Over
Concrete Deck

WEATHERWELD

A DIVISION OF LIQUIFORM TECHNOLOGIES, INC.

9757 7th Street, Suite 803
Rancho Cucamonga, CA 91730-5297
(888) 440-3224 | www.weatherweld.com

DRAWING TITLE:

EXPANSION JOINT

DETAIL NUMBER:

401

PREPARED FOR:

DRAWN BY:

R. Weygant

PROJECT:

APPROVED BY:
M. Jones

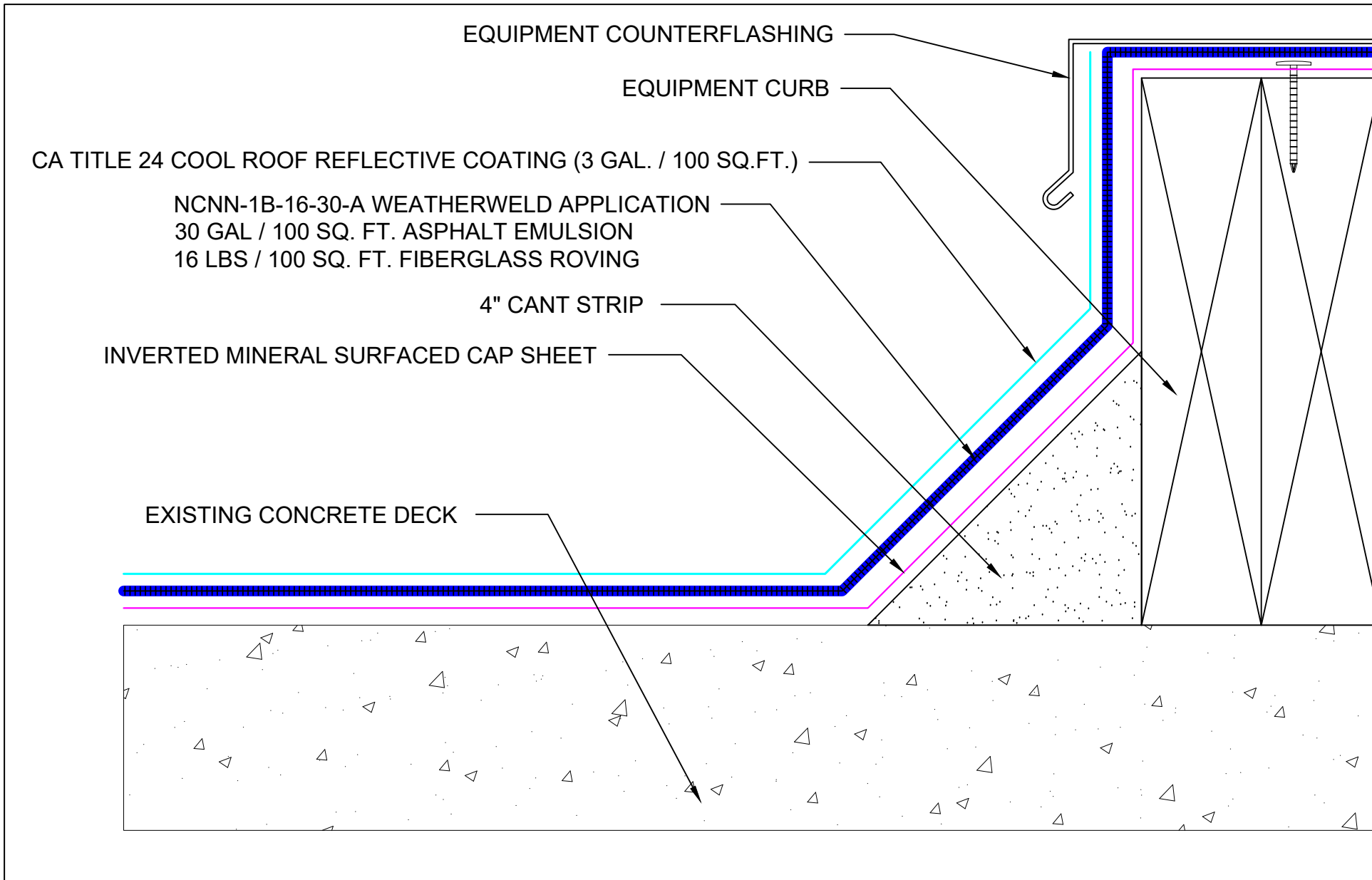
INSTALLED BY:
TBD


DATE:

1/24/24

SCALE:

3" = 1'-0"



SYSTEM: NCNN-1B-16-30-A Composite Membrane Over Concrete Deck	 <small>A DIVISION OF LIQUIFORM TECHNOLOGIES, INC.</small>	9757 7 th Street, Suite 803 Rancho Cucamonga, CA 91730-5297 (888) 440-3224 www.weatherweld.com		PREPARED FOR:	
		DRAWING TITLE: EQUIPMENT CURB FLASHING	DETAIL NUMBER: 402	DRAWN BY: R. Weygant	PROJECT:
		APPROVED BY: M. Jones	INSTALLED BY: TBD	DATE: 1/24/24	SCALE: 6" = 1'-0"

UNIT SKYLIGHT - FASTENED IN ACCORDANCE WITH SKYLIGHT MANUFACTURERS' RECOMMENDATIONS

SKYLIGHT CURB

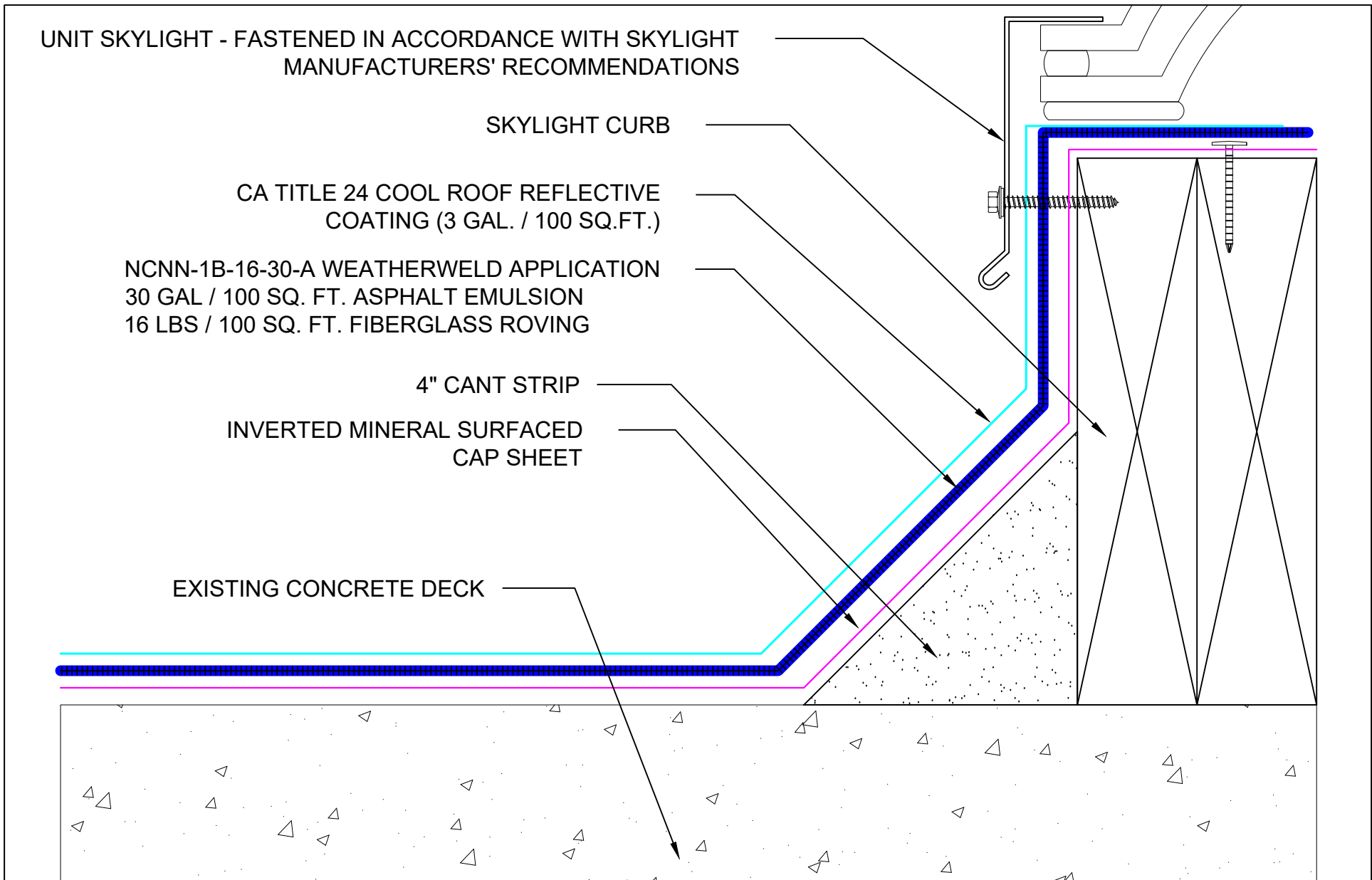
CA TITLE 24 COOL ROOF REFLECTIVE COATING (3 GAL. / 100 SQ.FT.)

NCNN-1B-16-30-A WEATHERWELD APPLICATION
 30 GAL / 100 SQ. FT. ASPHALT EMULSION
 16 LBS / 100 SQ. FT. FIBERGLASS ROVING

4" CANT STRIP

INVERTED MINERAL SURFACED CAP SHEET

EXISTING CONCRETE DECK

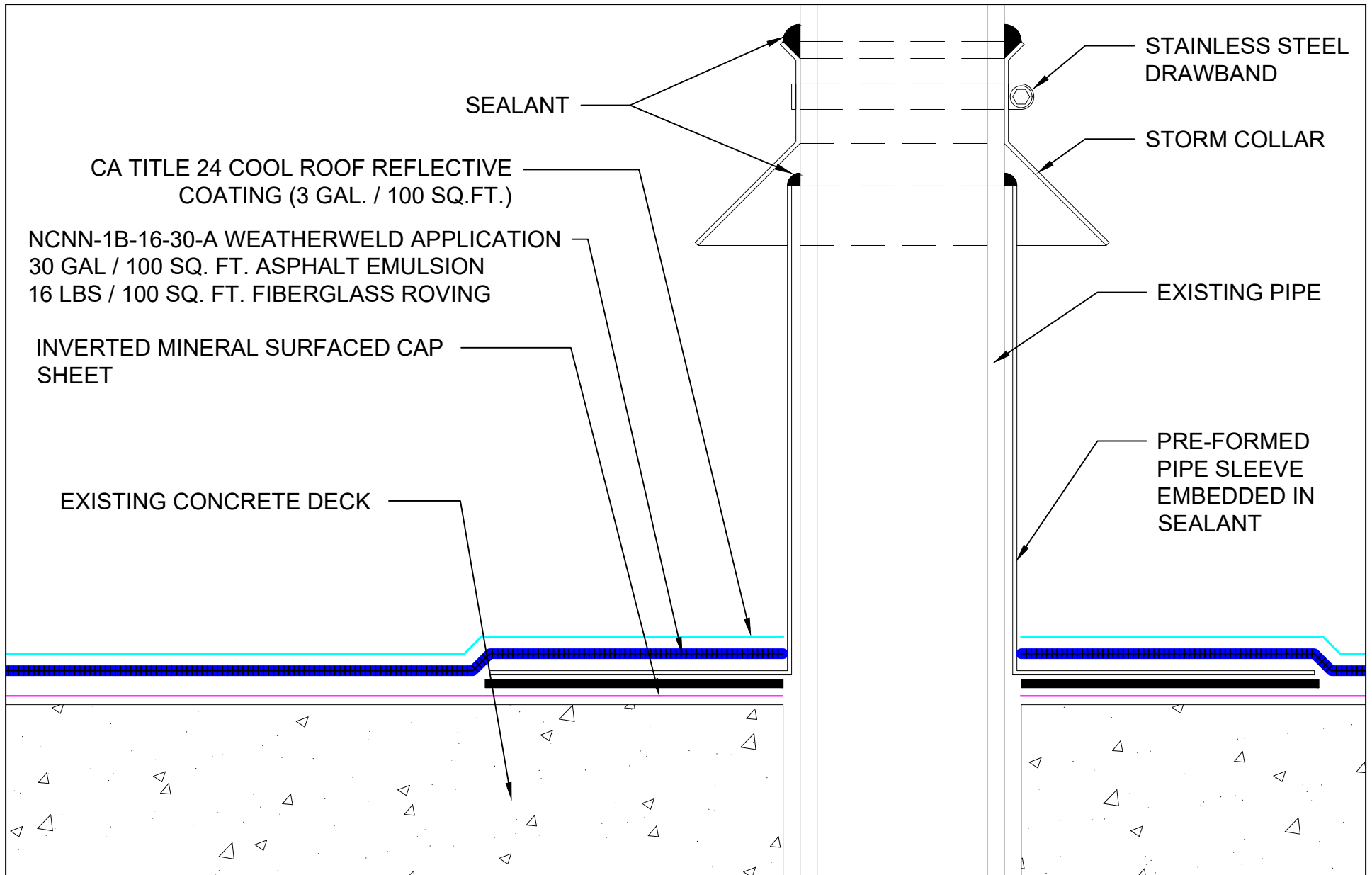



SYSTEM:
NCNN-1B-16-30-A
 Composite Membrane Over
 Concrete Deck

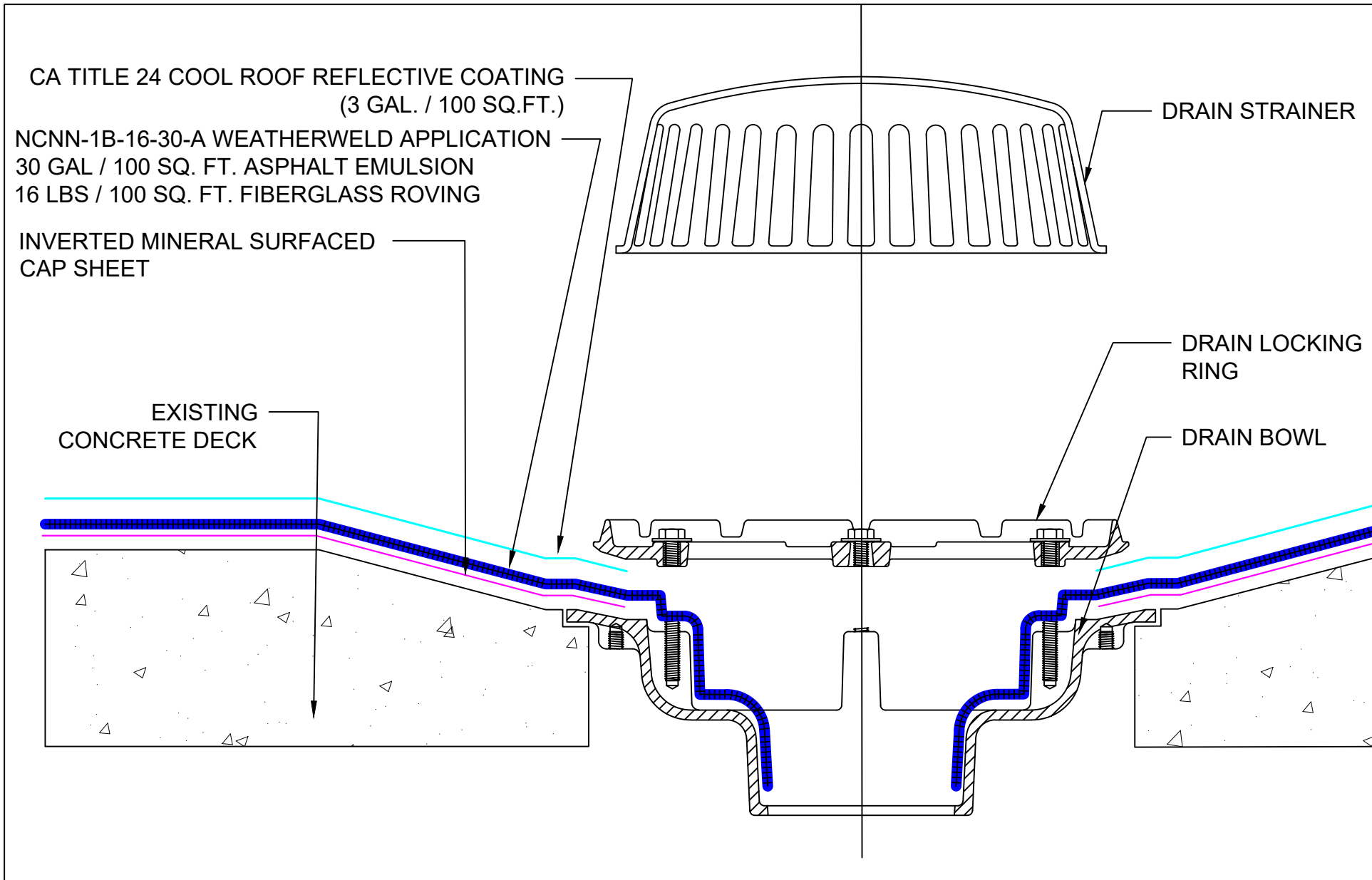
WEATHERWELD
 A DIVISION OF LIQUIFORM TECHNOLOGIES, INC.
 9757 7th Street, Suite 803
 Rancho Cucamonga, CA 91730-5297
 (888) 440-3224 | www.weatherweld.com


DRAWING TITLE:
CURB MOUNTED SKYLIGHT FLASHING
 DETAIL NUMBER:
403

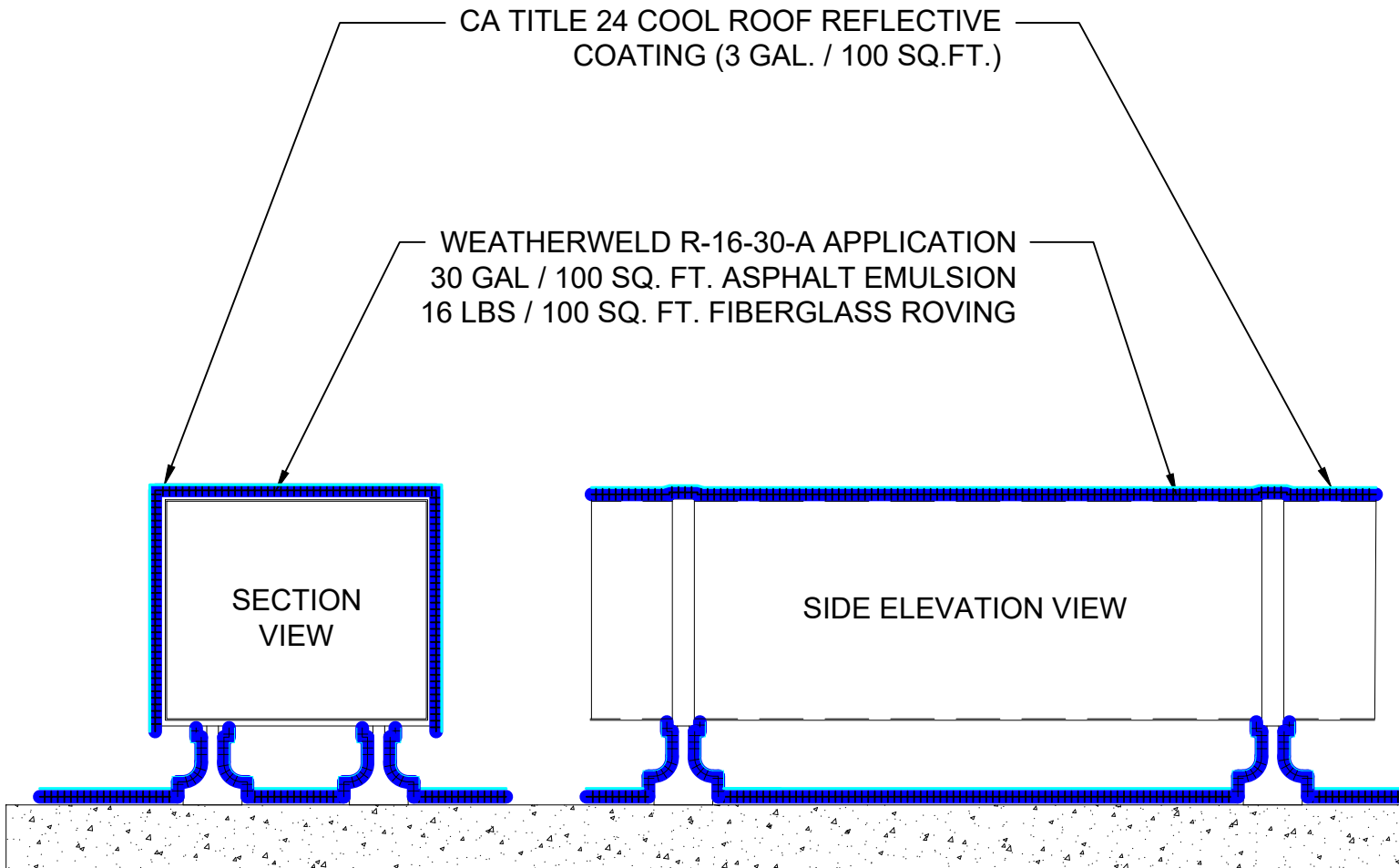
PREPARED FOR:
 DRAWN BY:
R. Weygant
 PROJECT:
 APPROVED BY:
M. Jones
 INSTALLED BY:
TBD
 DATE:
1/24/24
 SCALE:
6" = 1'-0"



SYSTEM: NCNN-1B-16-30-A Composite Membrane Over Concrete Deck	 <small>A DIVISION OF LIQUIFORM TECHNOLOGIES, INC.</small>	9757 7 th Street, Suite 803 Rancho Cucamonga, CA 91730-5297 (888) 440-3224 www.weatherweld.com		PREPARED FOR:	
		DRAWING TITLE: PIPE PENETRATION FLASHING	DETAIL NUMBER: 501	DRAWN BY: R. Weygant	PROJECT:
		APPROVED BY: M. Jones	INSTALLED BY: TBD	DATE: 1/24/24	SCALE: 6" = 1'-0"



SYSTEM: NCNN-1B-16-30-A Composite Membrane Over Concrete Deck	 <small>A DIVISION OF LIQUIFORM TECHNOLOGIES, INC.</small>	9757 7 th Street, Suite 803 Rancho Cucamonga, CA 91730-5297 (888) 440-3224 www.weatherweld.com		PREPARED FOR:	
		DRAWING TITLE: DRAIN DETAIL	DETAIL NUMBER: 502	DRAWN BY: R. Weygant	PROJECT:
		APPROVED BY: M. Jones	INSTALLED BY: TBD	DATE: 1/24/24	SCALE: 6" = 1'-0"



SYSTEM:

NCNN-1B-16-30-A

Composite Membrane Over
Concrete Deck

WEATHERWELD

A DIVISION OF LIQUIFORM TECHNOLOGIES, INC.

9757 7th Street, Suite 803
Rancho Cucamonga, CA 91730-5297
(888) 440-3224 | www.weatherweld.com

PREPARED FOR:

DRAWING TITLE:

ROOFTOP DUCT ENCAPSULATION

DETAIL NUMBER:

503

DRAWN BY:

R. Weygant

PROJECT:

APPROVED BY:
M. Jones

INSTALLED BY:
TBD

DATE:

1/24/24

SCALE:

1 1/2" = 1'-0"