

System Overview

Deck:	Approved Substrates
Base Sheet:	G2 Base Sheet
Insulation / Cover:	-
Asphalt Emulsion:	30 Gal
Fiberglass Roving:	16 Lbs
Coating:	CA Title 24 Cool Roof Reflective Coating (3 Gal. / 100 Sq.Ft.)

CA TITLE 24 COOL ROOF REFLECTIVE COATING (3 GAL. / 100 SQ.FT.)

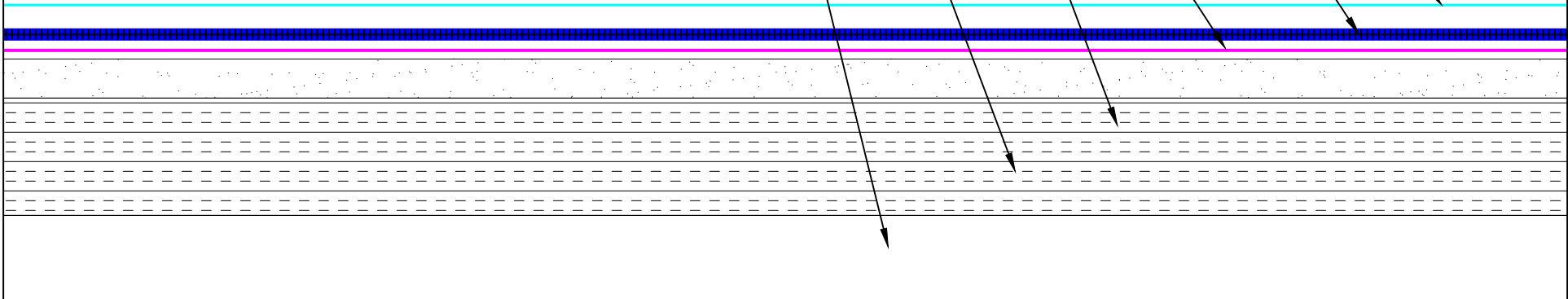
I-1B-16-30-A WEATHERWELD APPLICATION
 30 GAL / 100 SQ. FT. ASPHALT EMULSION
 16 LBS / 100 SQ. FT. FIBERGLASS ROVING

G2 BASE SHEET

DENSDECK PRIME SUBSTRATE BOARD

RIGID POLYISOCYANURATE INSULATION

APPROVED ROOF SUBSTRATE



SYSTEM:
I-1B-16-30-A
 Composite Membrane Over
 Approved Substrates



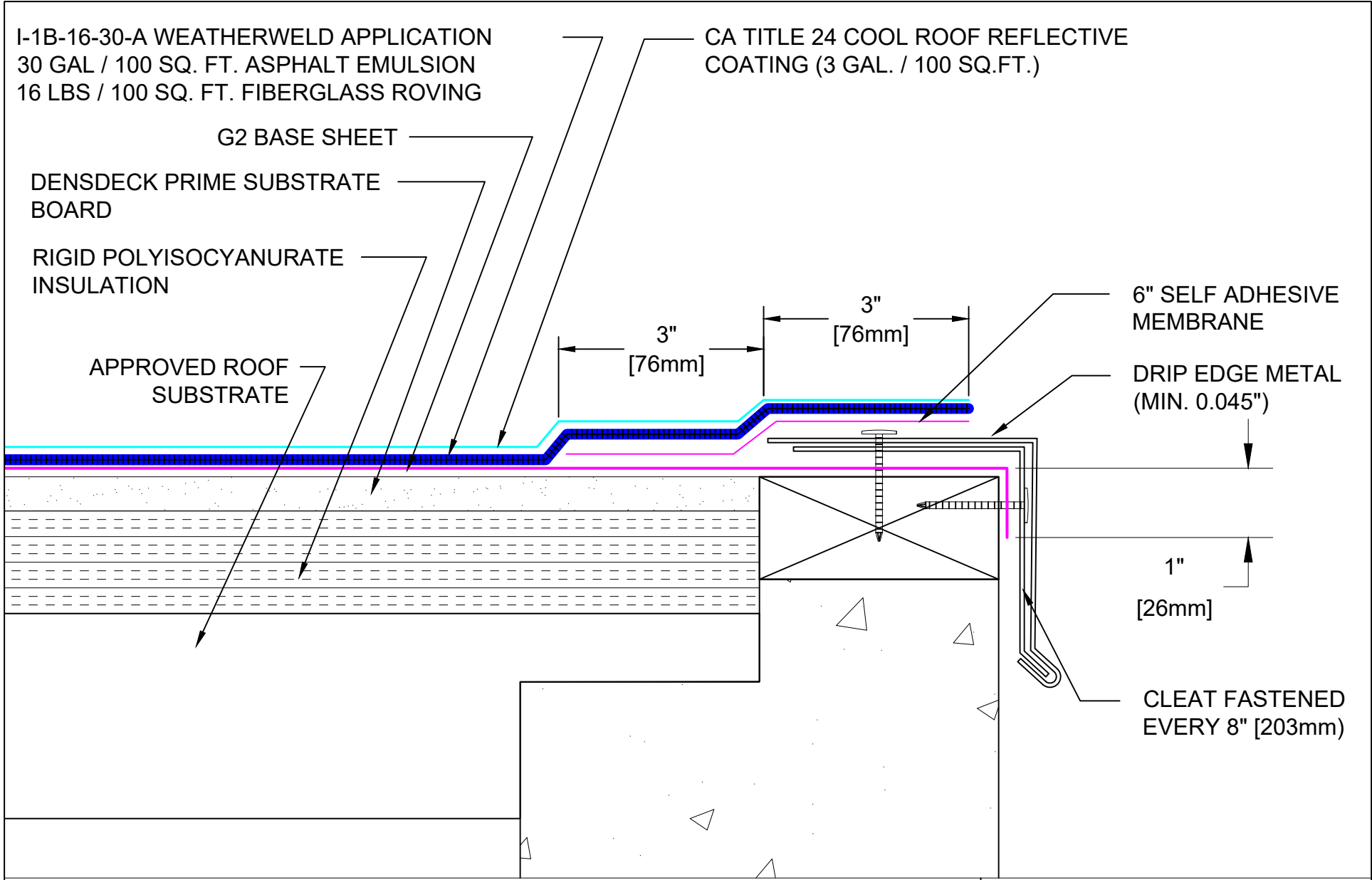
9757 7th Street, Suite 803
 Rancho Cucamonga, CA 91730-5297
 (888) 440-3224 | www.weatherweld.com


PREPARED FOR:

DRAWING TITLE:
SYSTEM OVERVIEW

DETAIL NUMBER:
101

DRAWN BY: R. Weygant	PROJECT:	DATE: 1/24/24	SCALE: NTS
APPROVED BY: M. Jones	INSTALLED BY:		



SYSTEM: I-1B-16-30-A Composite Membrane Over Approved Substrates	 A DIVISION OF LIQUIFORM TECHNOLOGIES, INC.	9757 7 th Street, Suite 803 Rancho Cucamonga, CA 91730-5297 (888) 440-3224 www.weatherweld.com		PREPARED FOR:		
		DRAWING TITLE: EDGE FLASHING	DETAIL NUMBER: 201	DRAWN BY: R. Weygant	PROJECT:	
			APPROVED BY: M. Jones	INSTALLED BY: TBD	DATE: 1/24/24	SCALE: 6" = 1'-0"

COPING CAP

EXTERIOR GRADE NAILER

CA TITLE 24 COOL ROOF REFLECTIVE COATING (3 GAL. / 100 SQ.FT.)

I-1B-16-30-A WEATHERWELD APPLICATION
 30 GAL / 100 SQ. FT. ASPHALT EMULSION
 16 LBS / 100 SQ. FT. FIBERGLASS ROVING

CMU WALL

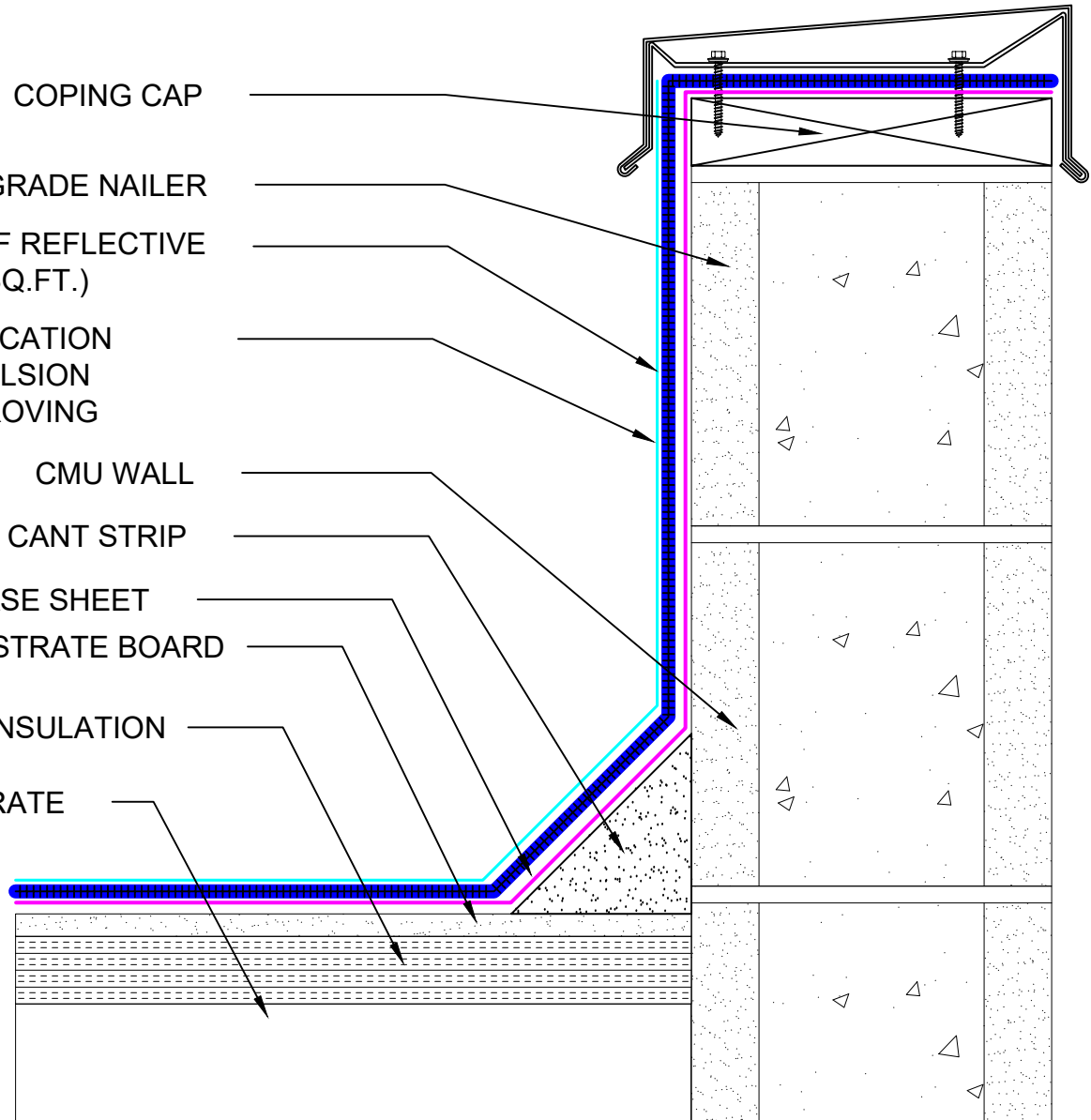
4" CANT STRIP

G2 BASE SHEET

DENSDECK PRIME SUBSTRATE BOARD

RIGID POLYISOCYANURATE INSULATION

APPROVED ROOF SUBSTRATE



SYSTEM:

I-1B-16-30-A

Composite Membrane Over
Approved Substrates

WEATHERWELD

A DIVISION OF LIQUIFORM TECHNOLOGIES, INC.

9757 7th Street, Suite 803
 Rancho Cucamonga, CA 91730-5297
 (888) 440-3224 | www.weatherweld.com

DRAWING TITLE:

COPING CAP FLASHING AT CMU WALL

DETAIL NUMBER:

301

PREPARED FOR:

DRAWN BY:

R. Weygant

PROJECT:

APPROVED BY:
M. Jones

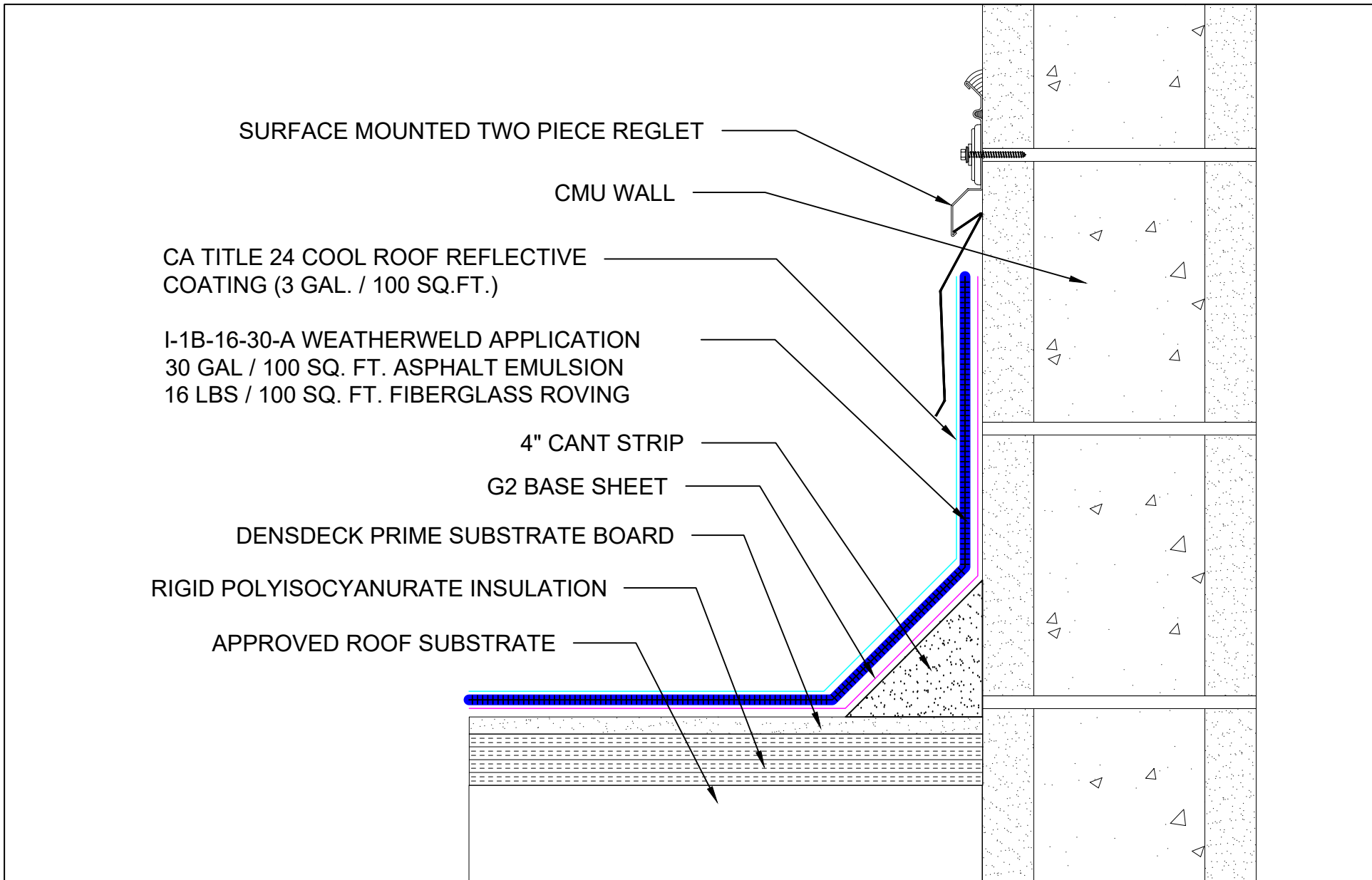
INSTALLED BY:
TBD

DATE:

1/24/24

SCALE:

3" = 1'-0"



SURFACE MOUNTED TWO PIECE REGLET

CMU WALL

CA TITLE 24 COOL ROOF REFLECTIVE COATING (3 GAL. / 100 SQ.FT.)

I-1B-16-30-A WEATHERWELD APPLICATION
 30 GAL / 100 SQ. FT. ASPHALT EMULSION
 16 LBS / 100 SQ. FT. FIBERGLASS ROVING

4" CANT STRIP

G2 BASE SHEET

DENSDECK PRIME SUBSTRATE BOARD

RIGID POLYISOCYANURATE INSULATION

APPROVED ROOF SUBSTRATE

SYSTEM:

I-1B-16-30-A

Composite Membrane Over
 Approved Substrates

WEATHERWELD

A DIVISION OF LIQUIFORM TECHNOLOGIES, INC.

9757 7th Street, Suite 803
 Rancho Cucamonga, CA 91730-5297
 (888) 440-3224 | www.weatherweld.com

DRAWING TITLE:

SURFACE MOUNTED REGLET AT CMU WALL

DETAIL NUMBER:

302

PREPARED FOR:

DRAWN BY:

R. Weygant

PROJECT:

APPROVED BY:
M. Jones

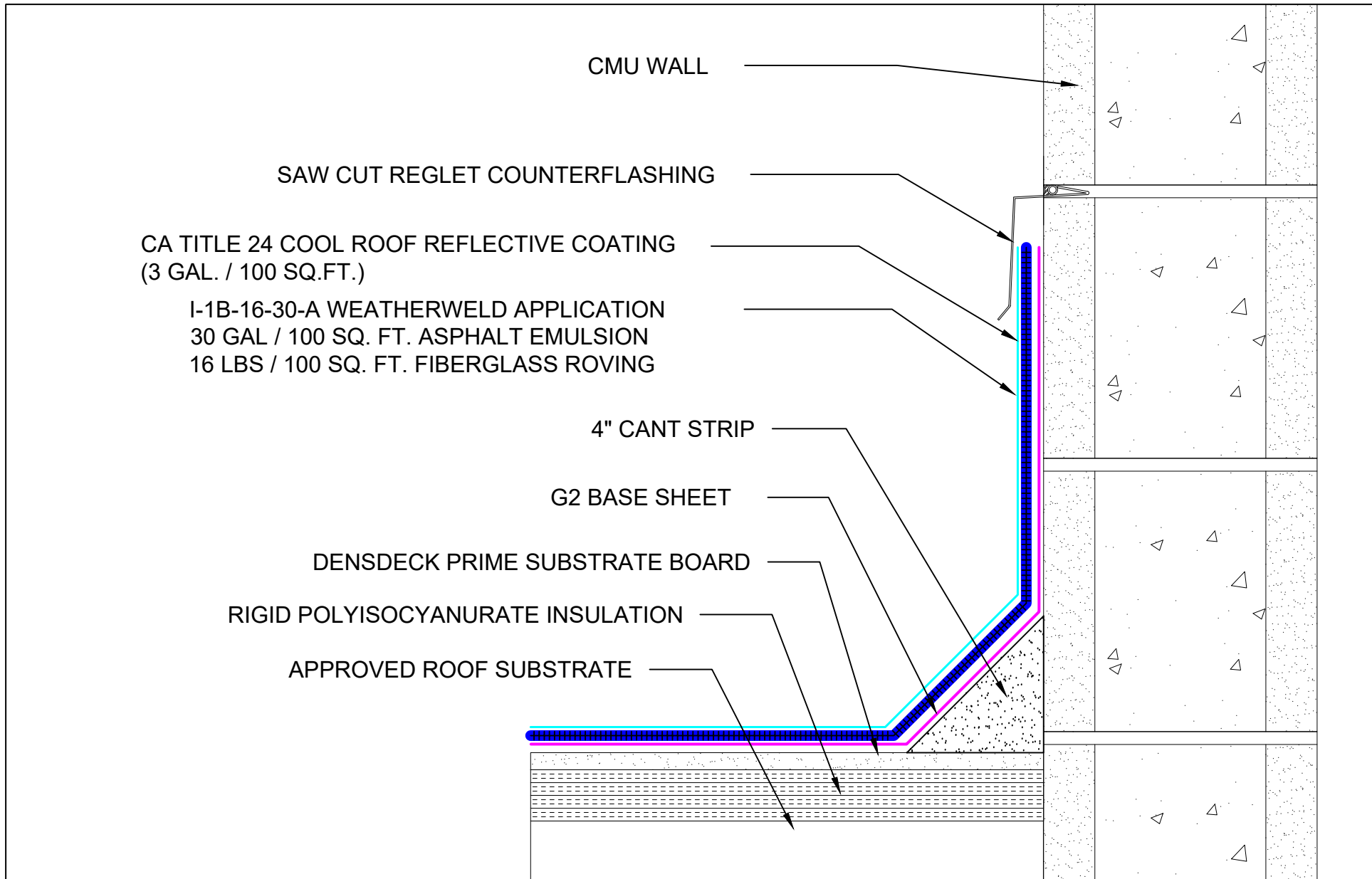
INSTALLED BY:
TBD


DATE:

1/24/24

SCALE:

3" = 1'-0"



SYSTEM: I-1B-16-30-A Composite Membrane Over Approved Substrates	 <small>A DIVISION OF LIQUIFORM TECHNOLOGIES, INC.</small>	9757 7 th Street, Suite 803 Rancho Cucamonga, CA 91730-5297 (888) 440-3224 www.weatherweld.com		PREPARED FOR:	
		DRAWING TITLE: SAW CUT REGLET AT CMU WALL	DETAIL NUMBER: 303	DRAWN BY: R. Weygant	PROJECT:
		APPROVED BY: M. Jones	INSTALLED BY: TBD	DATE: 1/24/24	SCALE: 3" = 1'-0"

CA TITLE 24 COOL ROOF REFLECTIVE COATING (3 GAL. / 100 SQ.FT.)

I-1B-16-30-A WEATHERWELD APPLICATION
 30 GAL / 100 SQ. FT. ASPHALT EMULSION
 16 LBS / 100 SQ. FT. FIBERGLASS ROVING

EXISTING COUNTERFLASHING

CA TITLE 24 COOL ROOF REFLECTIVE COATING (3 GAL. / 100 SQ.FT.)

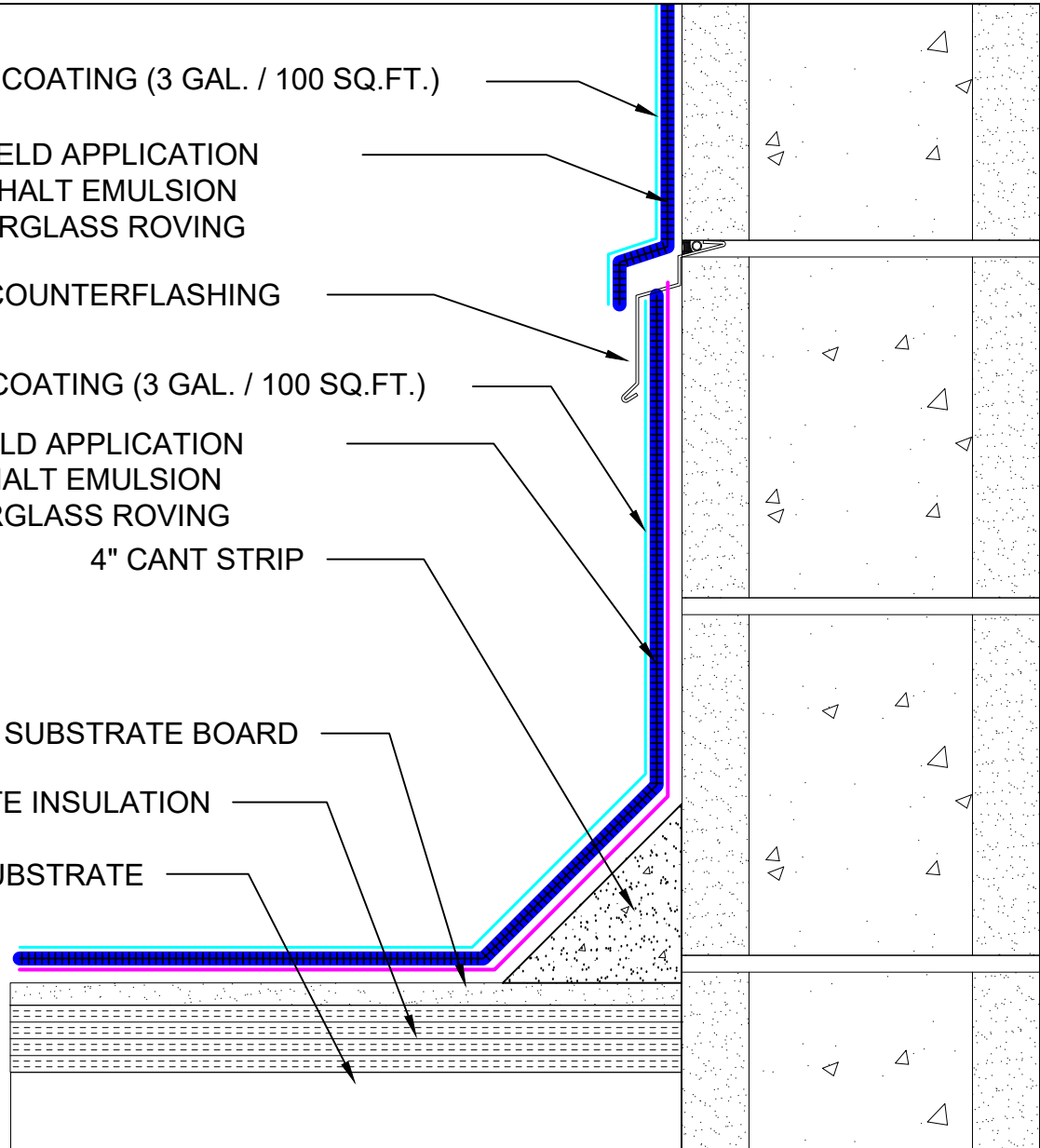
I-1B-16-30-A WEATHERWELD APPLICATION
 30 GAL / 100 SQ. FT. ASPHALT EMULSION
 16 LBS / 100 SQ. FT. FIBERGLASS ROVING

4" CANT STRIP

DENSDECK PRIME SUBSTRATE BOARD

RIGID POLYISOCYANURATE INSULATION

APPROVED ROOF SUBSTRATE



SYSTEM:

I-1B-16-30-A

Composite Membrane Over
 Approved Substrates

WEATHERWELD

A DIVISION OF LIQUIFORM TECHNOLOGIES, INC.

9757 7th Street, Suite 803
 Rancho Cucamonga, CA 91730-5297
 (888) 440-3224 | www.weatherweld.com

PREPARED FOR:

DRAWING TITLE:

**CMU WALL WITH EXISTING REGLET
 COUNTERFLASHING**

DETAIL NUMBER:

304

DRAWN BY:

R. Weygant

PROJECT:

APPROVED BY:
M. Jones

INSTALLED BY:
TBD

DATE:

1/24/24

SCALE:

3" = 1'-0"

CA TITLE 24 COOL ROOF REFLECTIVE COATING (3 GAL. / 100 SQ.FT.)

I-1B-16-30-A WEATHERWELD APPLICATION
 30 GAL / 100 SQ. FT. ASPHALT EMULSION
 16 LBS / 100 SQ. FT. FIBERGLASS ROVING

EXISTING COUNTERFLASHING

CA TITLE 24 COOL ROOF REFLECTIVE COATING (3 GAL. / 100 SQ.FT.)

I-1B-16-30-A WEATHERWELD APPLICATION
 30 GAL / 100 SQ. FT. ASPHALT EMULSION
 16 LBS / 100 SQ. FT. FIBERGLASS ROVING

CMU WALL

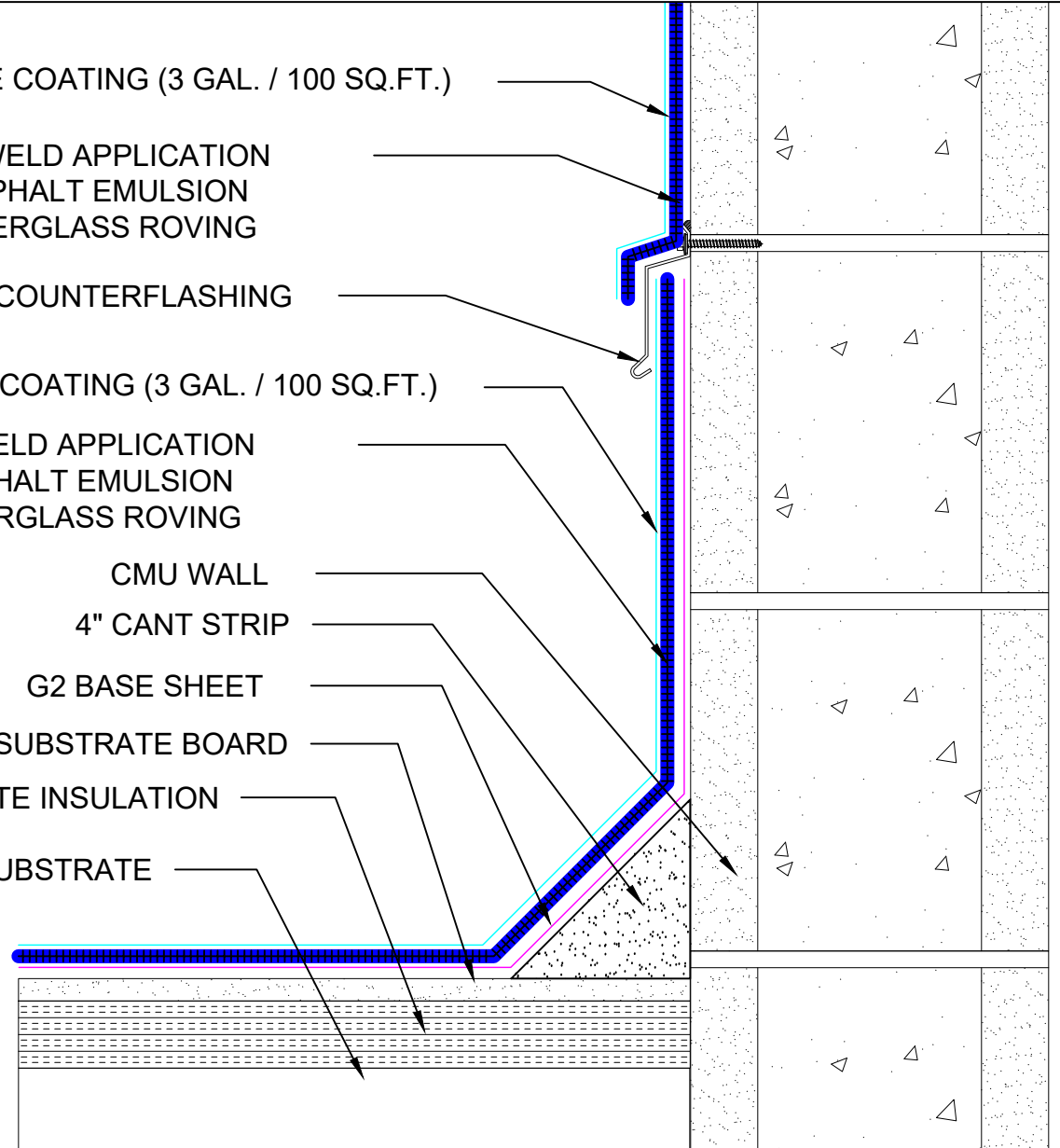
4" CANT STRIP

G2 BASE SHEET

DENSDECK PRIME SUBSTRATE BOARD

RIGID POLYISOCYANURATE INSULATION

APPROVED ROOF SUBSTRATE



SYSTEM:

I-1B-16-30-A

Composite Membrane Over
 Approved Substrates



A DIVISION OF LIQUIFORM TECHNOLOGIES, INC.

9757 7th Street, Suite 803
 Rancho Cucamonga, CA 91730-5297
 (888) 440-3224 | www.weatherweld.com

PREPARED FOR:

DRAWING TITLE:

**CMU WALL WITH EXISTING SURFACE
 MOUNTED COUNTERFLASHING**

DETAIL NUMBER:

305

DRAWN BY:

R. Weygant

PROJECT:

APPROVED BY:

M. Jones

INSTALLED BY:

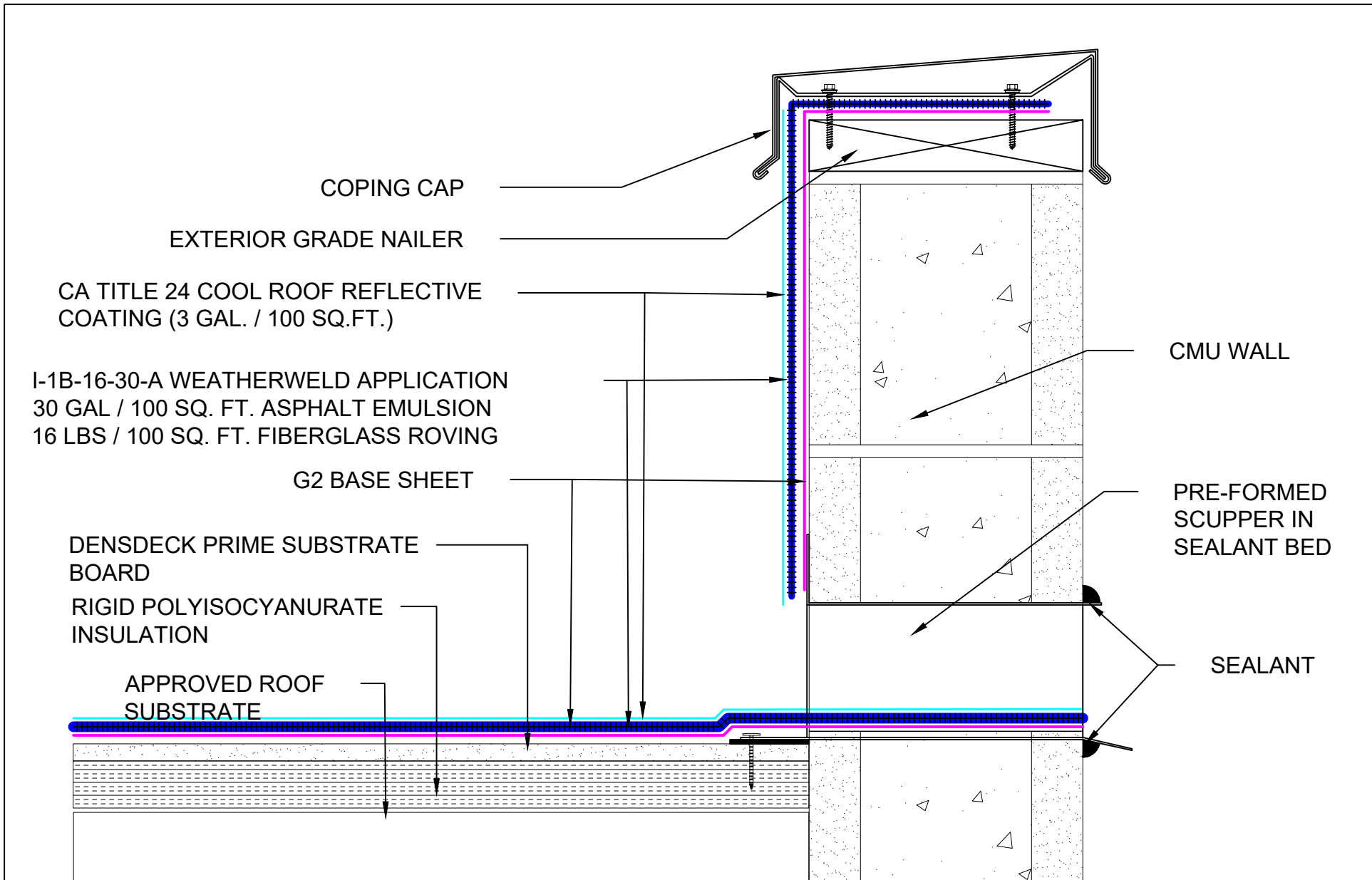
TBD


DATE:

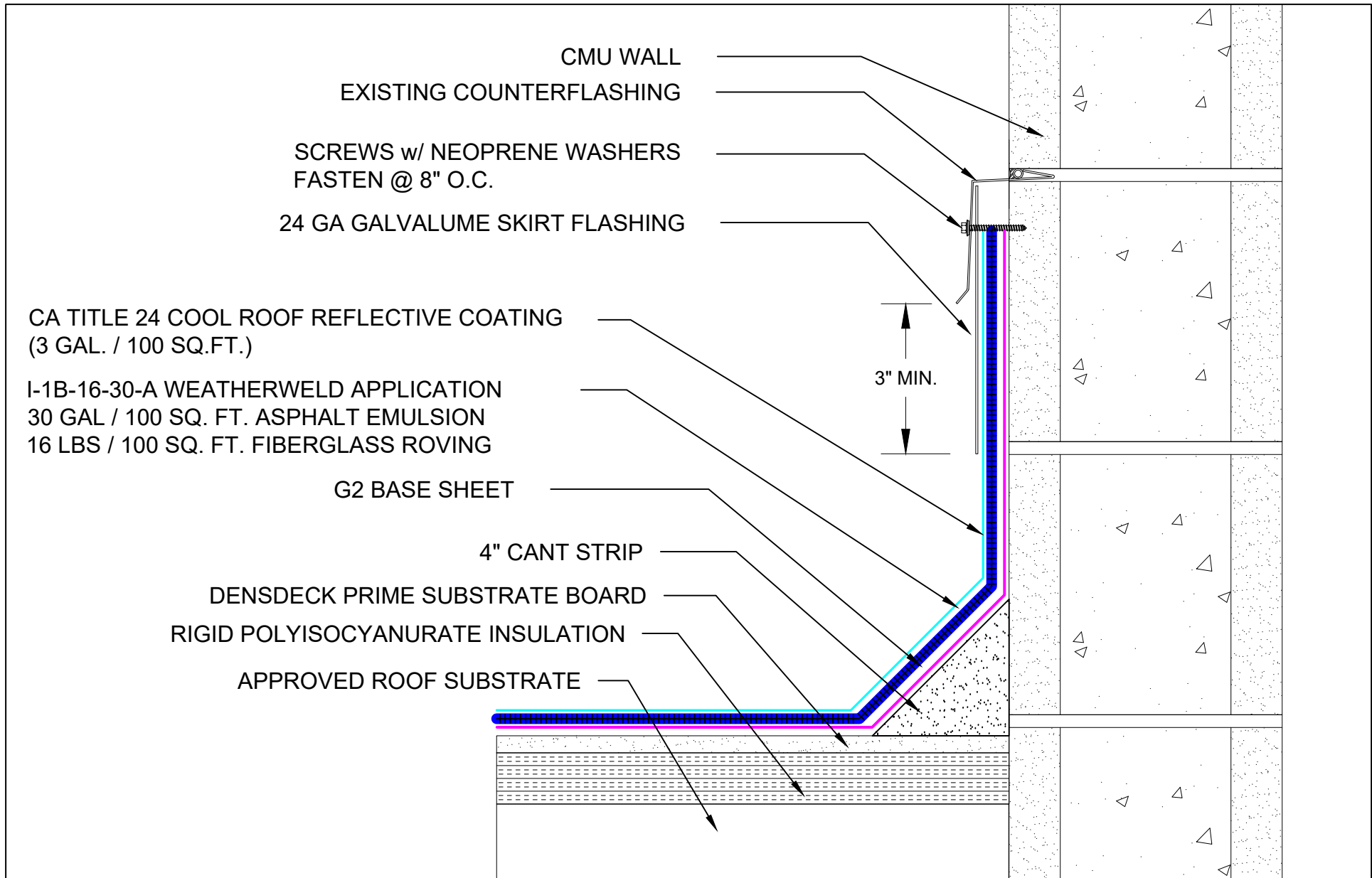
1/24/24


SCALE:

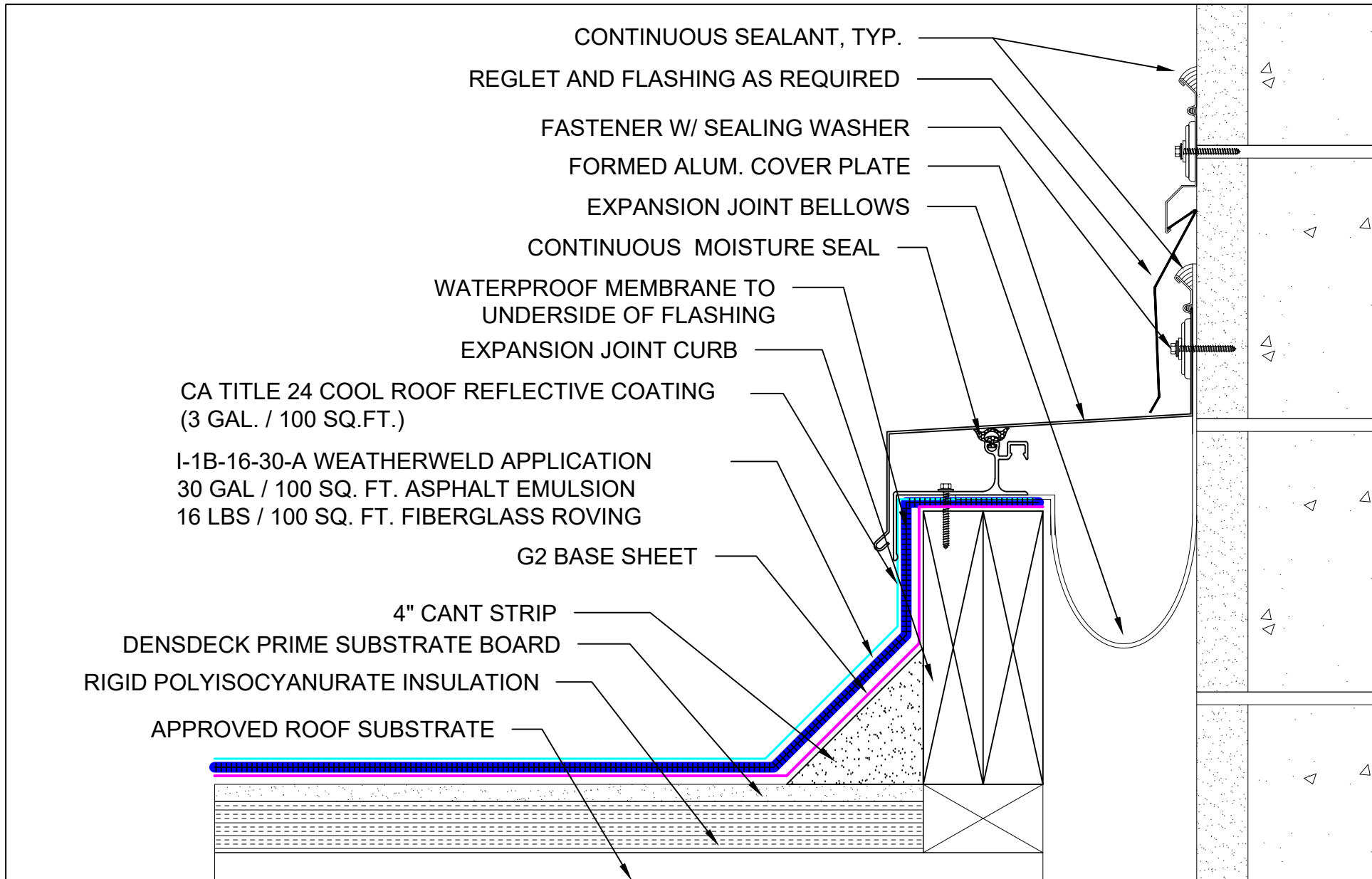
3" = 1'-0"



SYSTEM: I-1B-16-30-A	 A DIVISION OF LIQUIFORM TECHNOLOGIES, INC. 9757 7 th Street, Suite 803 Rancho Cucamonga, CA 91730-5297 (888) 440-3224 www.weatherweld.com	PREPARED FOR:				
Composite Membrane Over Approved Substrates	DRAWING TITLE: THRU WALL SCUPPER FLASHING AT CMU WALL	DETAIL NUMBER: 306	DRAWN BY: R. Weygant	PROJECT:		
			APPROVED BY: M. Jones	INSTALLED BY: TBD	DATE: 1/24/24	SCALE: 3" = 1'-0"



SYSTEM: I-1B-16-30-A Composite Membrane Over Approved Substrates	 <small>A DIVISION OF LIQUIFORM TECHNOLOGIES, INC.</small>	9757 7 th Street, Suite 803 Rancho Cucamonga, CA 91730-5297 (888) 440-3224 www.weatherweld.com		PREPARED FOR:		
		DRAWING TITLE: SKIRTED COUNTERFLASHING AT CMU WALL	DETAIL NUMBER: 307	DRAWN BY: R. Weygant	PROJECT:	
		APPROVED BY: M. Jones	INSTALLED BY: TBD	DATE: 1/24/24	SCALE: 3" = 1'-0"	



CONTINUOUS SEALANT, TYP.
 REGLET AND FLASHING AS REQUIRED
 FASTENER W/ SEALING WASHER
 FORMED ALUM. COVER PLATE
 EXPANSION JOINT BELLOWS
 CONTINUOUS MOISTURE SEAL
 WATERPROOF MEMBRANE TO
 UNDERSIDE OF FLASHING
 EXPANSION JOINT CURB

CA TITLE 24 COOL ROOF REFLECTIVE COATING
 (3 GAL. / 100 SQ.FT.)

I-1B-16-30-A WEATHERWELD APPLICATION
 30 GAL / 100 SQ. FT. ASPHALT EMULSION
 16 LBS / 100 SQ. FT. FIBERGLASS ROVING

G2 BASE SHEET

4" CANT STRIP

DENSDECK PRIME SUBSTRATE BOARD

RIGID POLYISOCYANURATE INSULATION

APPROVED ROOF SUBSTRATE

SYSTEM:

I-1B-16-30-A

Composite Membrane Over
 Approved Substrates

WEATHERWELD

A DIVISION OF LIQUIFORM TECHNOLOGIES, INC.

9757 7th Street, Suite 803
 Rancho Cucamonga, CA 91730-5297
 (888) 440-3224 | www.weatherweld.com

DRAWING TITLE:

EXPANSION JOINT AT CMU WALL

DETAIL NUMBER:

308

PREPARED FOR:

DRAWN BY:

R. Weygant

PROJECT:

APPROVED BY:
M. Jones

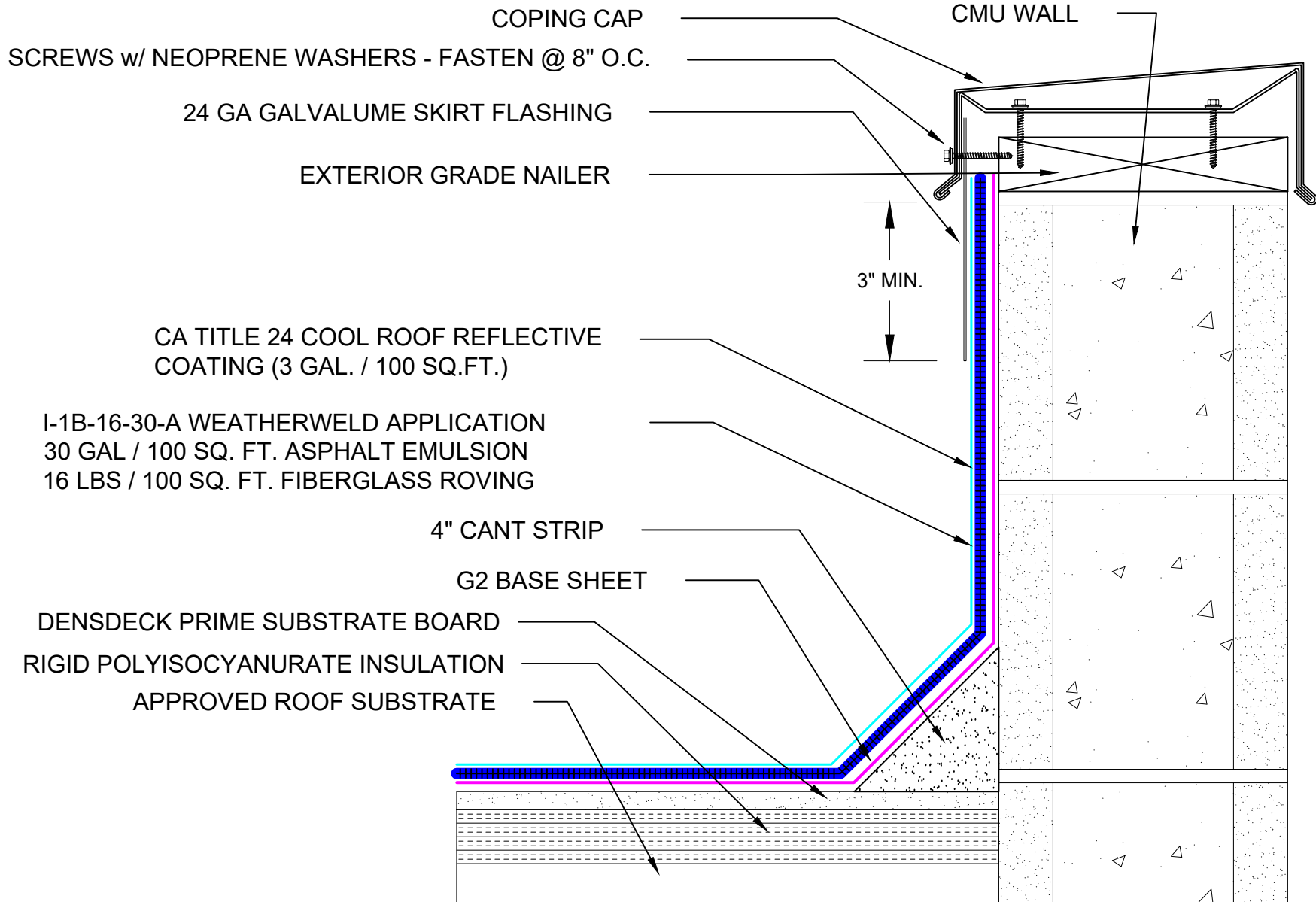
INSTALLED BY:
TBD

DATE:

1/24/24

SCALE:

3" = 1'-0"



SYSTEM:

I-1B-16-30-A

Composite Membrane Over
Approved Substrates

WEATHERWELD

A DIVISION OF LIQUIFORM TECHNOLOGIES, INC.

9757 7th Street, Suite 803
Rancho Cucamonga, CA 91730-5297
(888) 440-3224 | www.weatherweld.com

DRAWING TITLE:

SKIRTED COPING DETAIL AT CMU WALL

DETAIL NUMBER:

309

PREPARED FOR:

DRAWN BY:

R. Weygant

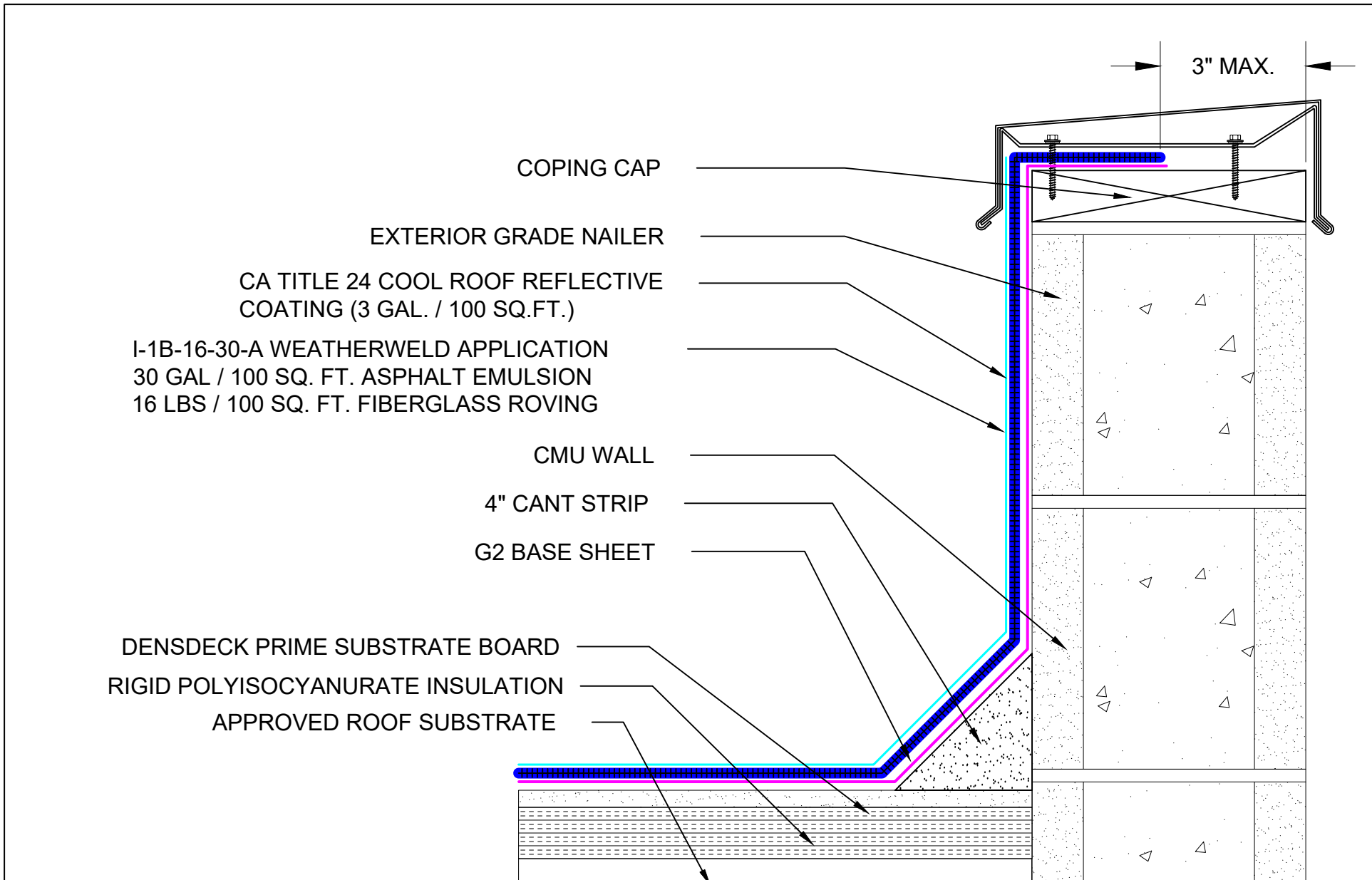
PROJECT:

APPROVED BY:
M. Jones

INSTALLED BY:
TBD

DATE:
1/24/24

SCALE:
3" = 1'-0"



SYSTEM:
I-1B-16-30-A
Composite Membrane Over
Approved Substrates

WEATHERWELD
A DIVISION OF LIQUIFORM TECHNOLOGIES, INC.

9757 7th Street, Suite 803
Rancho Cucamonga, CA 91730-5297
(888) 440-3224 | www.weatherweld.com

DRAWING TITLE:
COPING DETAIL AT CMU WALL (ALT)

DETAIL NUMBER:
310

PREPARED FOR:

DRAWN BY:
R. Weygant

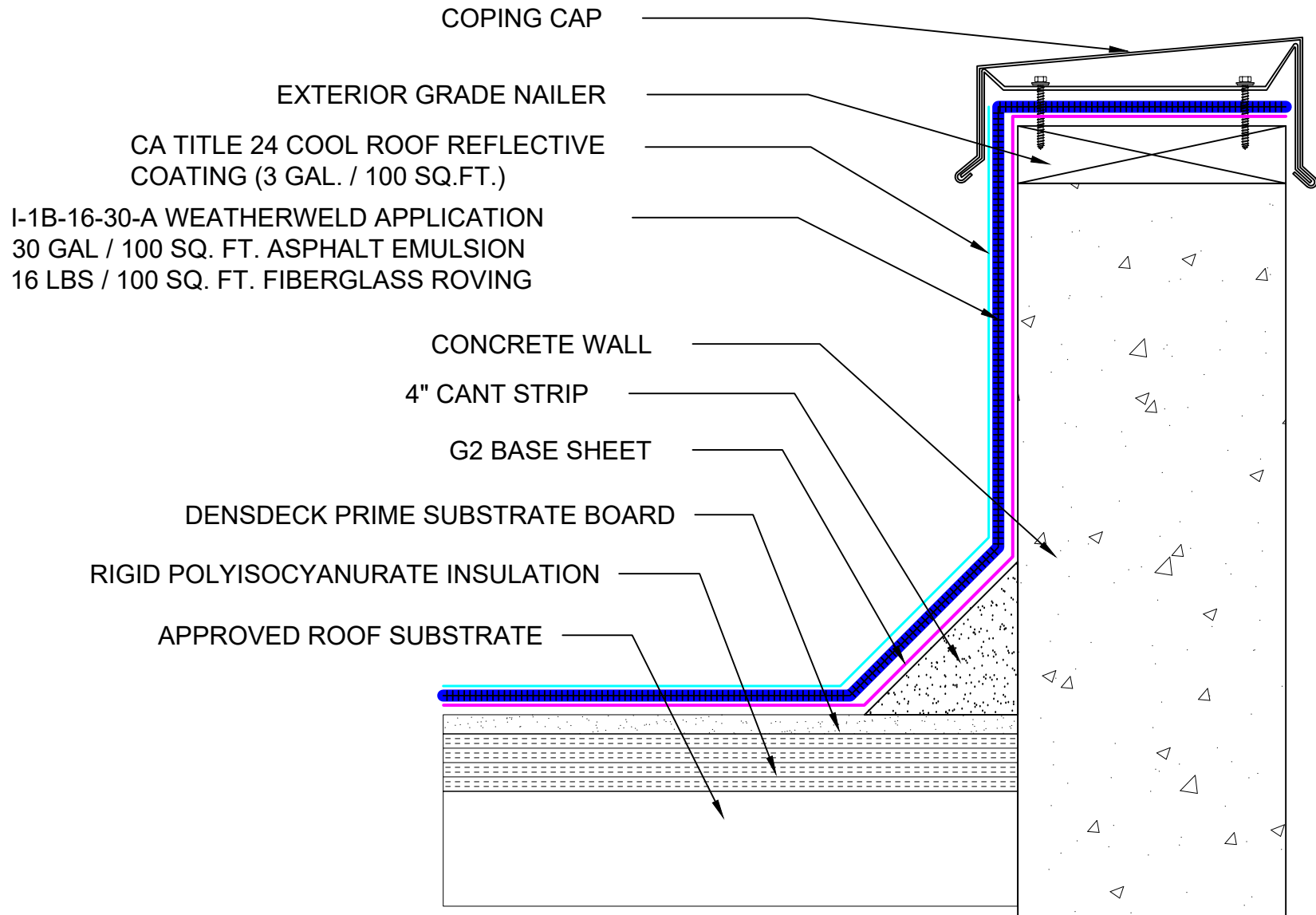
PROJECT:

APPROVED BY:
M. Jones

INSTALLED BY:
TBD

DATE:
1/24/24

SCALE:
3" = 1'-0"



SYSTEM:

I-1B-16-30-A

Composite Membrane Over
Approved Substrates

WEATHERWELD

A DIVISION OF LIQUIFORM TECHNOLOGIES, INC.

9757 7th Street, Suite 803
Rancho Cucamonga, CA 91730-5297
(888) 440-3224 | www.weatherweld.com

PREPARED FOR:

DRAWING TITLE:

COPING CAP FLASHING AT CONCRETE WALL

DETAIL NUMBER:

351

DRAWN BY:

R. Weygant

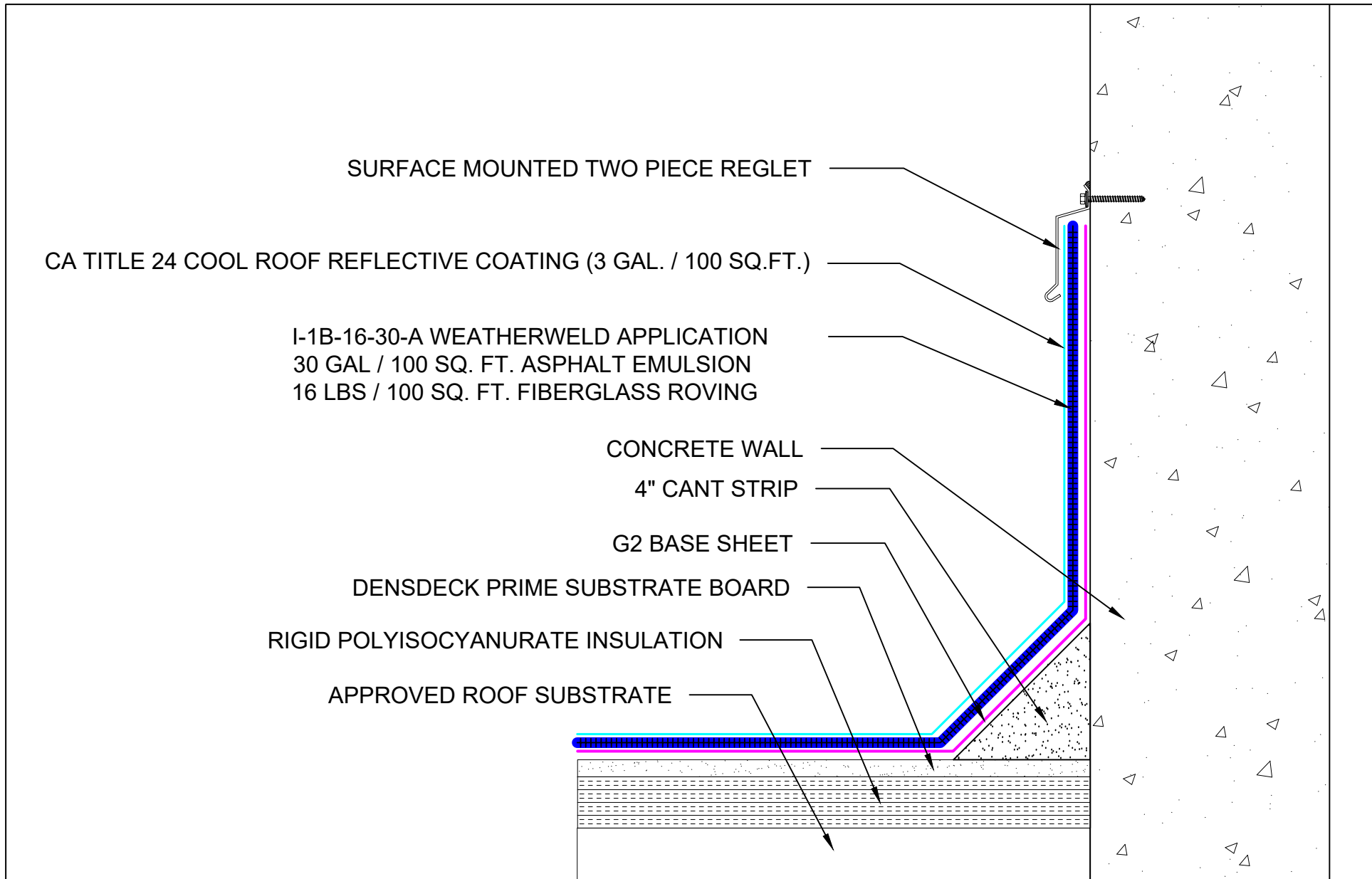
PROJECT:


APPROVED BY:
M. Jones

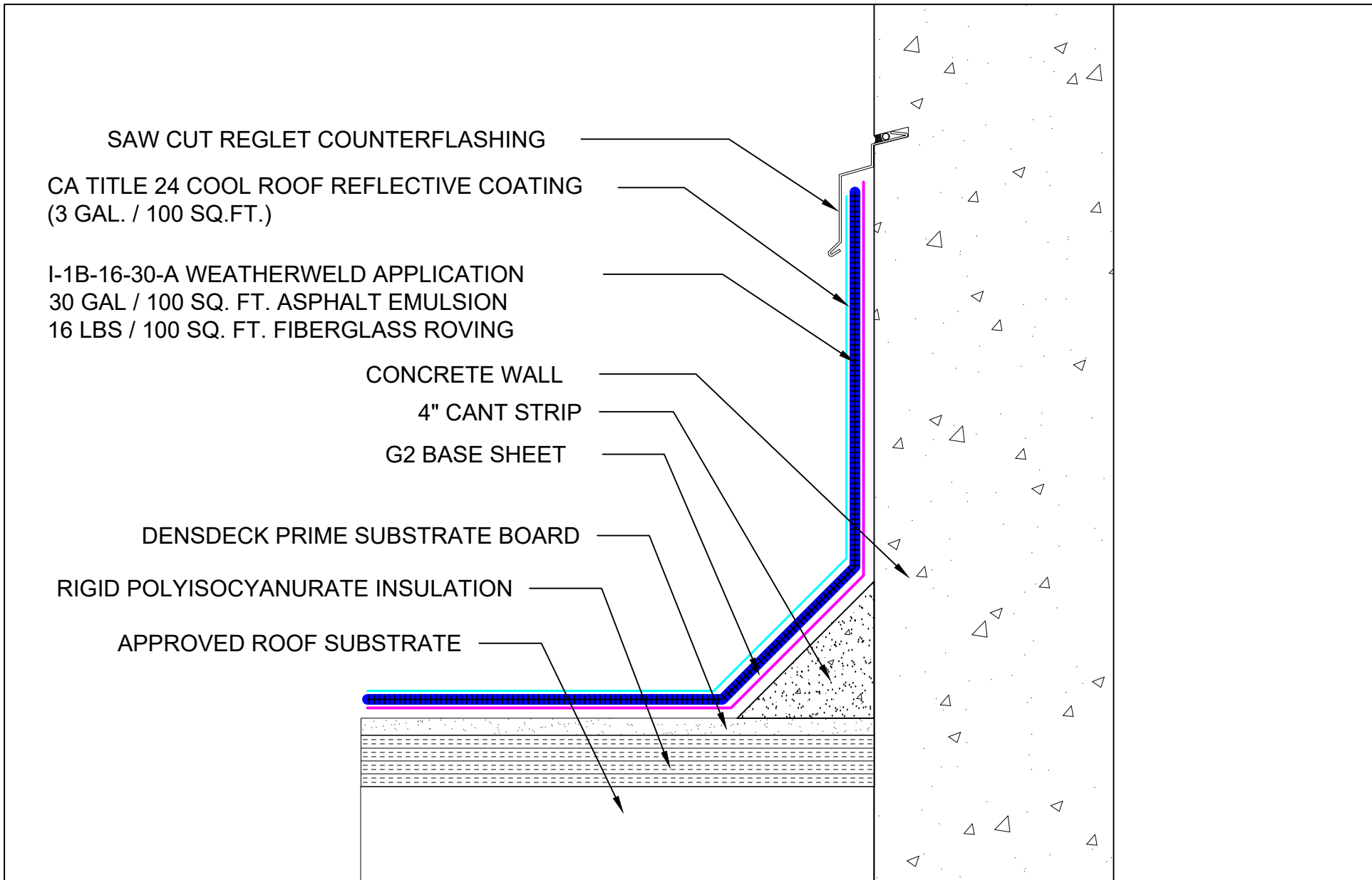
INSTALLED BY:
TBD


DATE:
1/24/24

SCALE:
3" = 1'-0"



SYSTEM: I-1B-16-30-A Composite Membrane Over Approved Substrates	 A DIVISION OF LIQUIFORM TECHNOLOGIES, INC.	9757 7 th Street, Suite 803 Rancho Cucamonga, CA 91730-5297 (888) 440-3224 www.weatherweld.com		PREPARED FOR:	
		DRAWING TITLE: SURFACE MOUNTED COUNTERFLASHING AT CONCRETE WALL	DETAIL NUMBER: 352	DRAWN BY: R. Weygant	PROJECT:
		APPROVED BY: M. Jones	INSTALLED BY: TBD	DATE: 1/24/24	SCALE: 3" = 1'-0"



SYSTEM: I-1B-16-30-A Composite Membrane Over Approved Substrates	 <small>A DIVISION OF LIQUIFORM TECHNOLOGIES, INC.</small>	9757 7 th Street, Suite 803 Rancho Cucamonga, CA 91730-5297 (888) 440-3224 www.weatherweld.com		PREPARED FOR:	
		DRAWING TITLE: SAW CUT REGLET AT CONCRETE WALL	DETAIL NUMBER: 353	DRAWN BY: R. Weygant	PROJECT:
		APPROVED BY: M. Jones	INSTALLED BY: TBD	DATE: 1/24/24	SCALE: 3" = 1'-0"

CA TITLE 24 COOL ROOF REFLECTIVE COATING (3 GAL. / 100 SQ.FT.)

I-1B-16-30-A WEATHERWELD APPLICATION
30 GAL / 100 SQ. FT. ASPHALT EMULSION
16 LBS / 100 SQ. FT. FIBERGLASS ROVING

EXISTING COUNTERFLASHING

CA TITLE 24 COOL ROOF REFLECTIVE COATING (3 GAL. / 100 SQ.FT.)

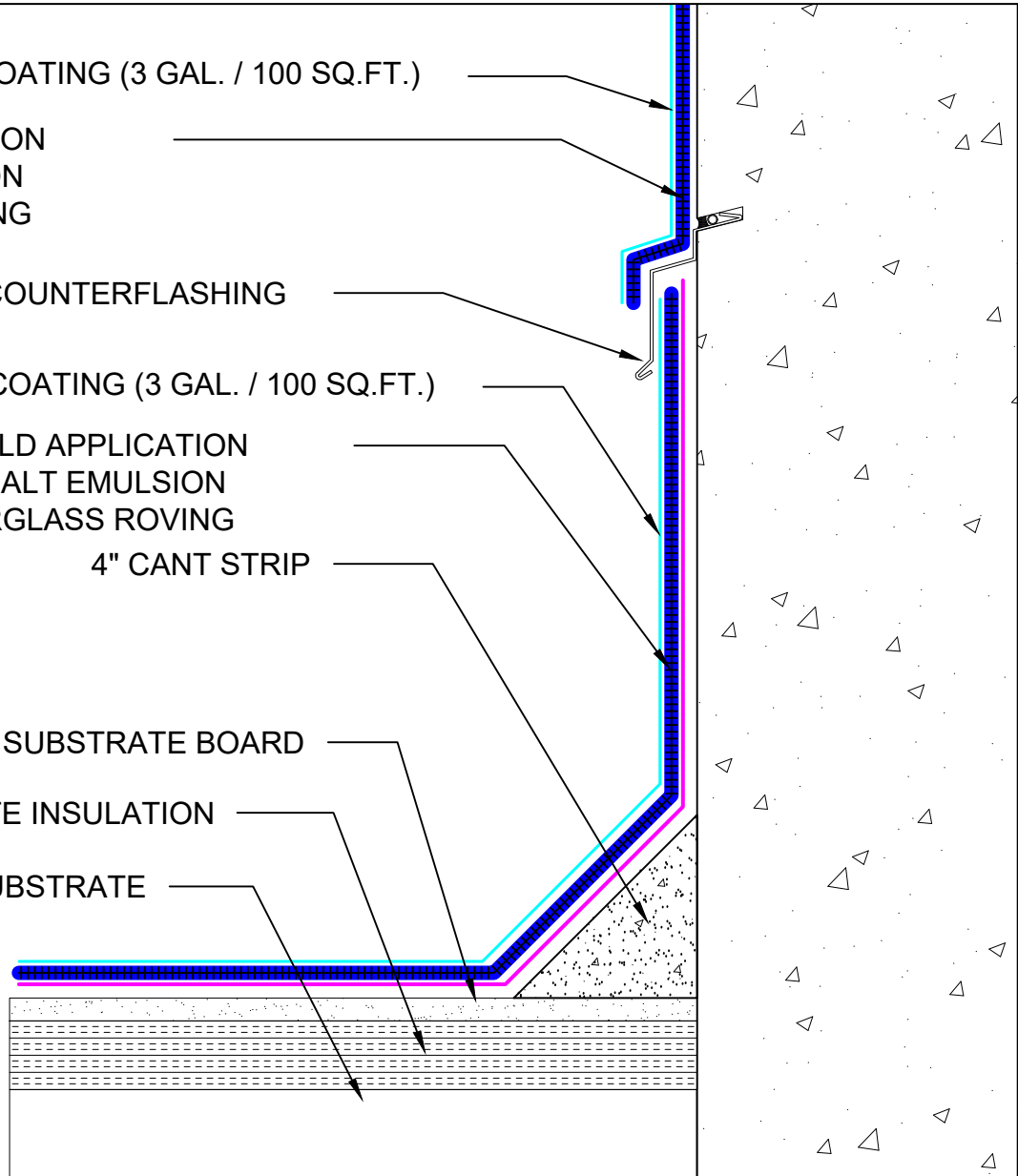
I-1B-16-30-A WEATHERWELD APPLICATION
30 GAL / 100 SQ. FT. ASPHALT EMULSION
16 LBS / 100 SQ. FT. FIBERGLASS ROVING

4" CANT STRIP

DENSDECK PRIME SUBSTRATE BOARD

RIGID POLYISOCYANURATE INSULATION

APPROVED ROOF SUBSTRATE



SYSTEM:

I-1B-16-30-A

Composite Membrane Over
Approved Substrates

WEATHERWELD

A DIVISION OF LIQUIFORM TECHNOLOGIES, INC.

9757 7th Street, Suite 803
Rancho Cucamonga, CA 91730-5297
(888) 440-3224 | www.weatherweld.com

DRAWING TITLE:

**CONCRETE WALL WITH EXISTING REGLET
COUNTERFLASHING**

DETAIL NUMBER:

354

PREPARED FOR:

DRAWN BY:

R. Weygant

PROJECT:

APPROVED BY:
M. Jones

INSTALLED BY:
TBD

DATE:

1/24/24

SCALE:

3" = 1'-0"

CA TITLE 24 COOL ROOF REFLECTIVE COATING (3 GAL. / 100 SQ.FT.)

I-1B-16-30-A WEATHERWELD APPLICATION
30 GAL / 100 SQ. FT. ASPHALT EMULSION
16 LBS / 100 SQ. FT. FIBERGLASS ROVING

EXISTING COUNTERFLASHING

CA TITLE 24 COOL ROOF REFLECTIVE COATING (3 GAL. / 100 SQ.FT.)

I-1B-16-30-A WEATHERWELD APPLICATION
30 GAL / 100 SQ. FT. ASPHALT EMULSION
16 LBS / 100 SQ. FT. FIBERGLASS ROVING

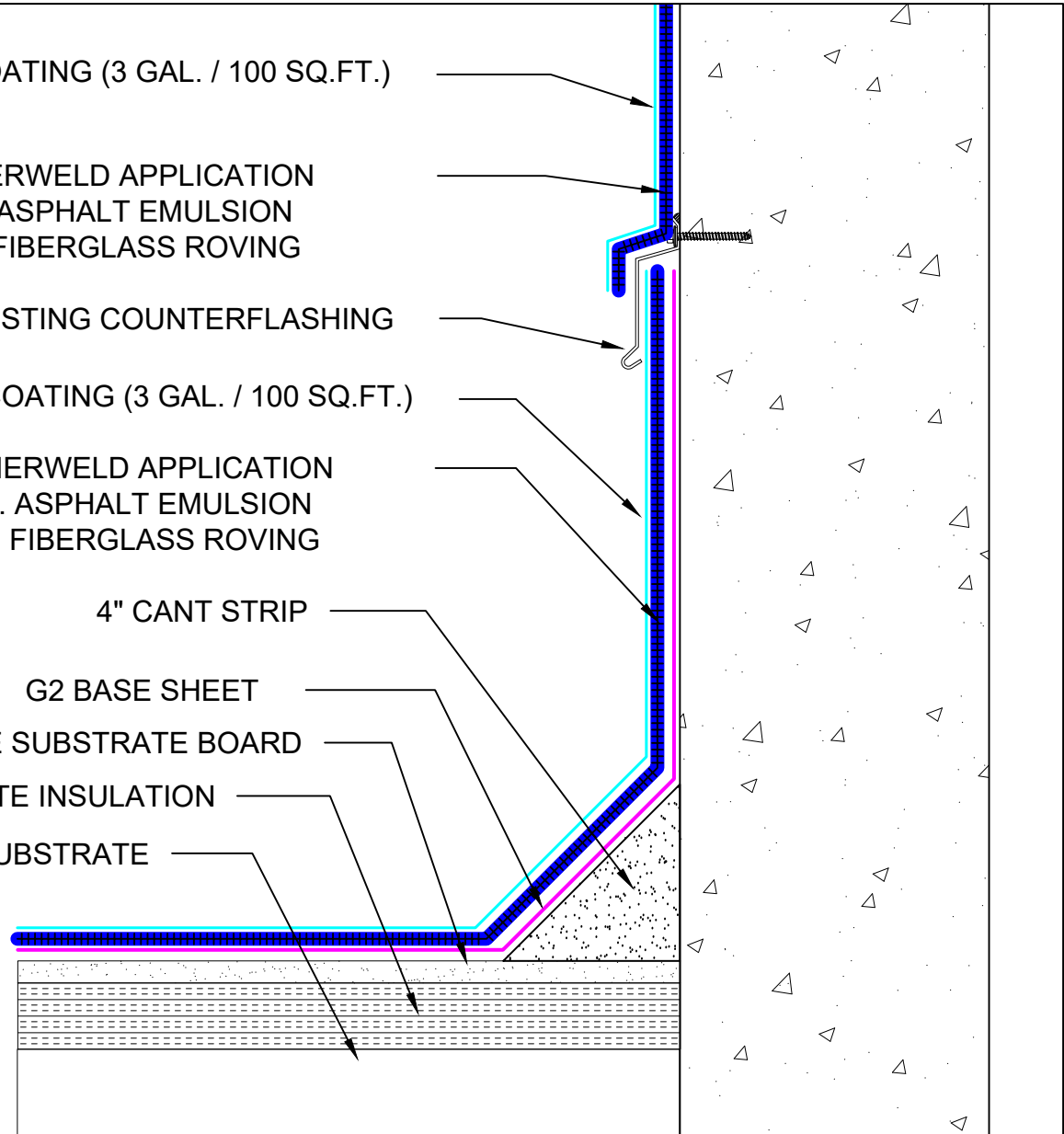
4" CANT STRIP

G2 BASE SHEET

DENSDECK PRIME SUBSTRATE BOARD

RIGID POLYISOCYANURATE INSULATION

APPROVED ROOF SUBSTRATE



SYSTEM:

I-1B-16-30-A

Composite Membrane Over
Approved Substrates

WEATHERWELD

A DIVISION OF LIQUIFORM TECHNOLOGIES, INC.

9757 7th Street, Suite 803
Rancho Cucamonga, CA 91730-5297
(888) 440-3224 | www.weatherweld.com

DRAWING TITLE:

**CONCRETE WALL WITH EXISTING SURFACE
MOUNTED COUNTERFLASHING**

DETAIL NUMBER:

355

PREPARED FOR:

DRAWN BY:

R. Weygant

PROJECT:

APPROVED BY:
M. Jones

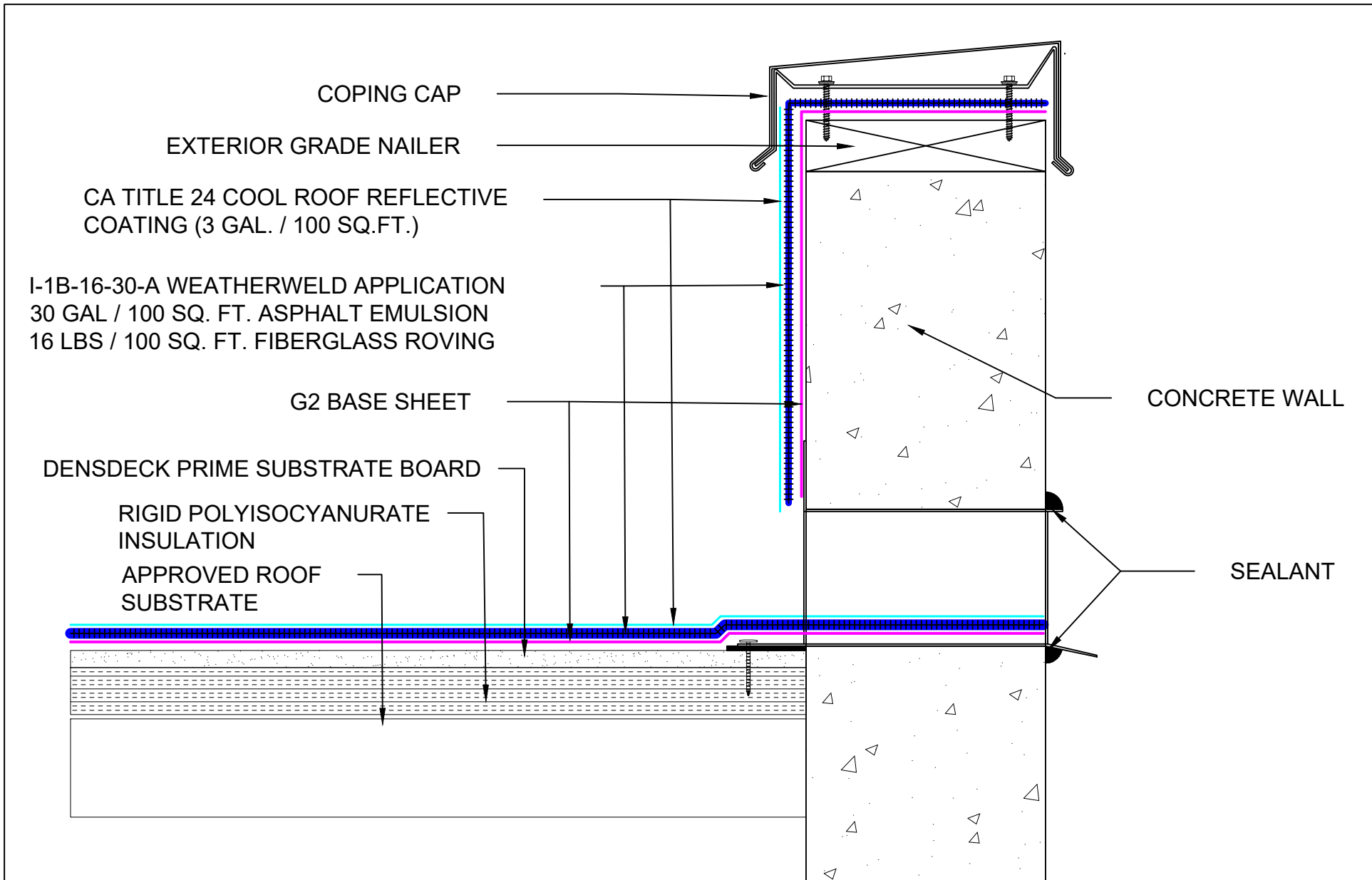
INSTALLED BY:
TBD


DATE:

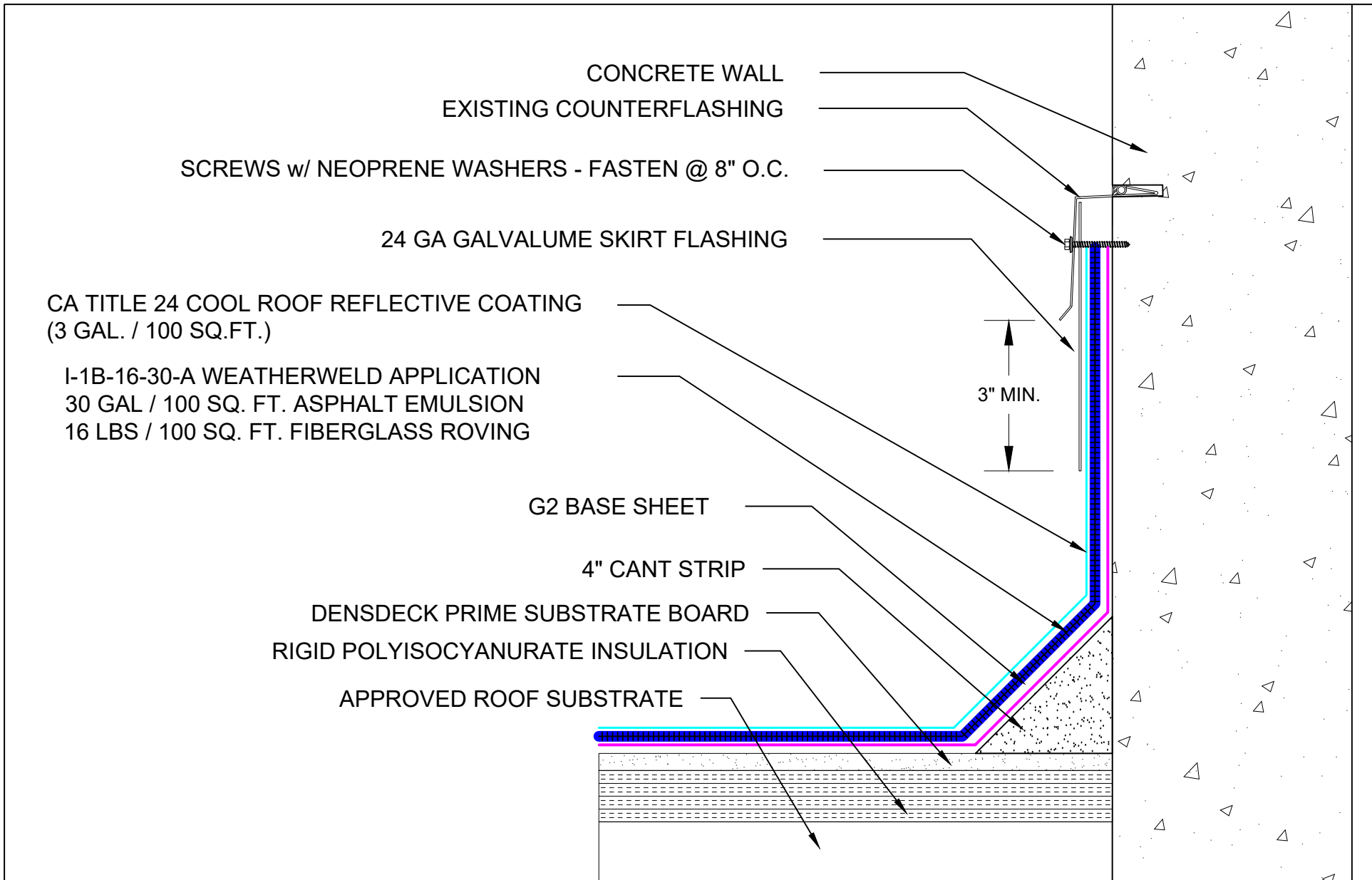
1/24/24


SCALE:

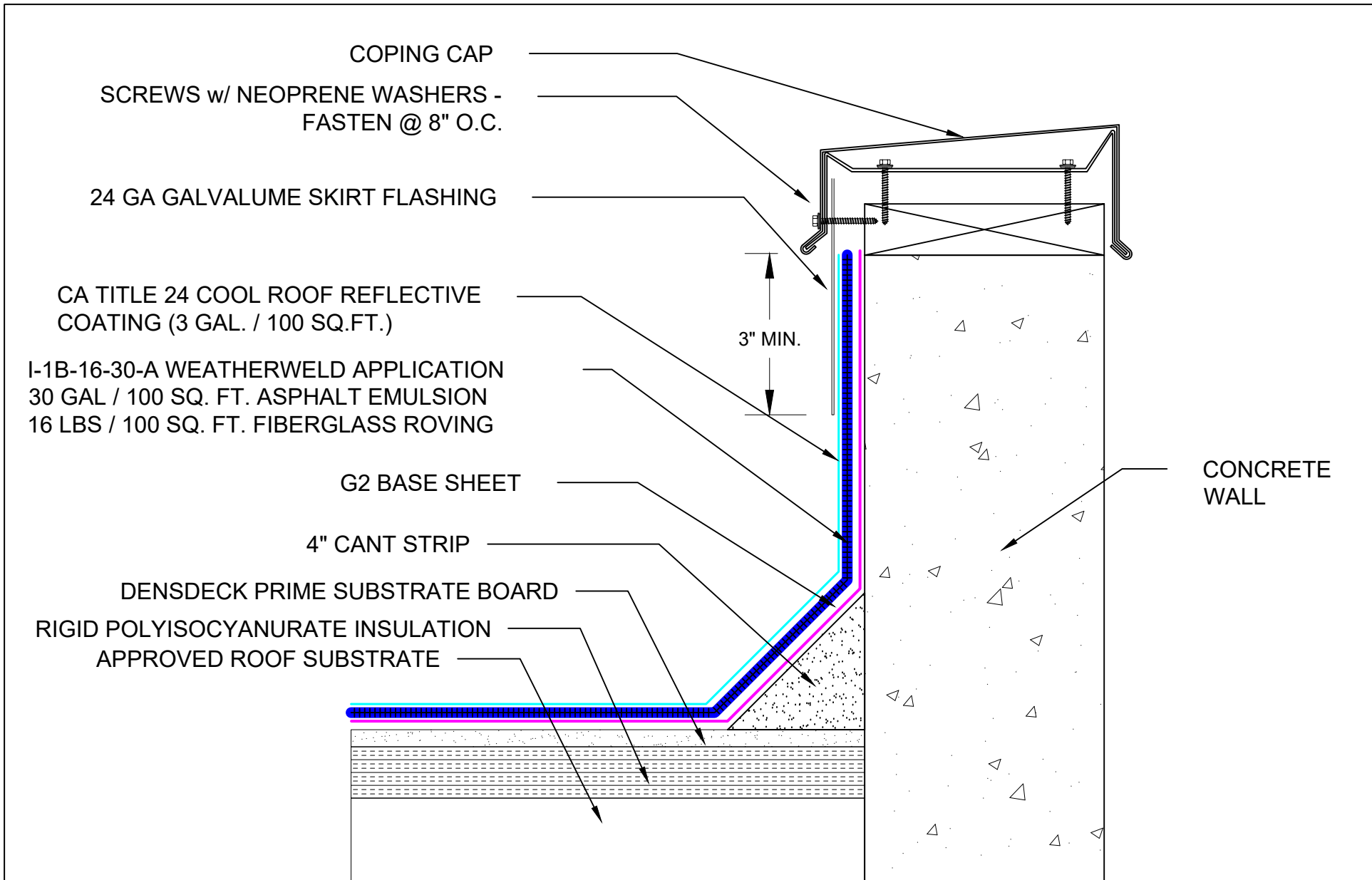
3" = 1'-0"



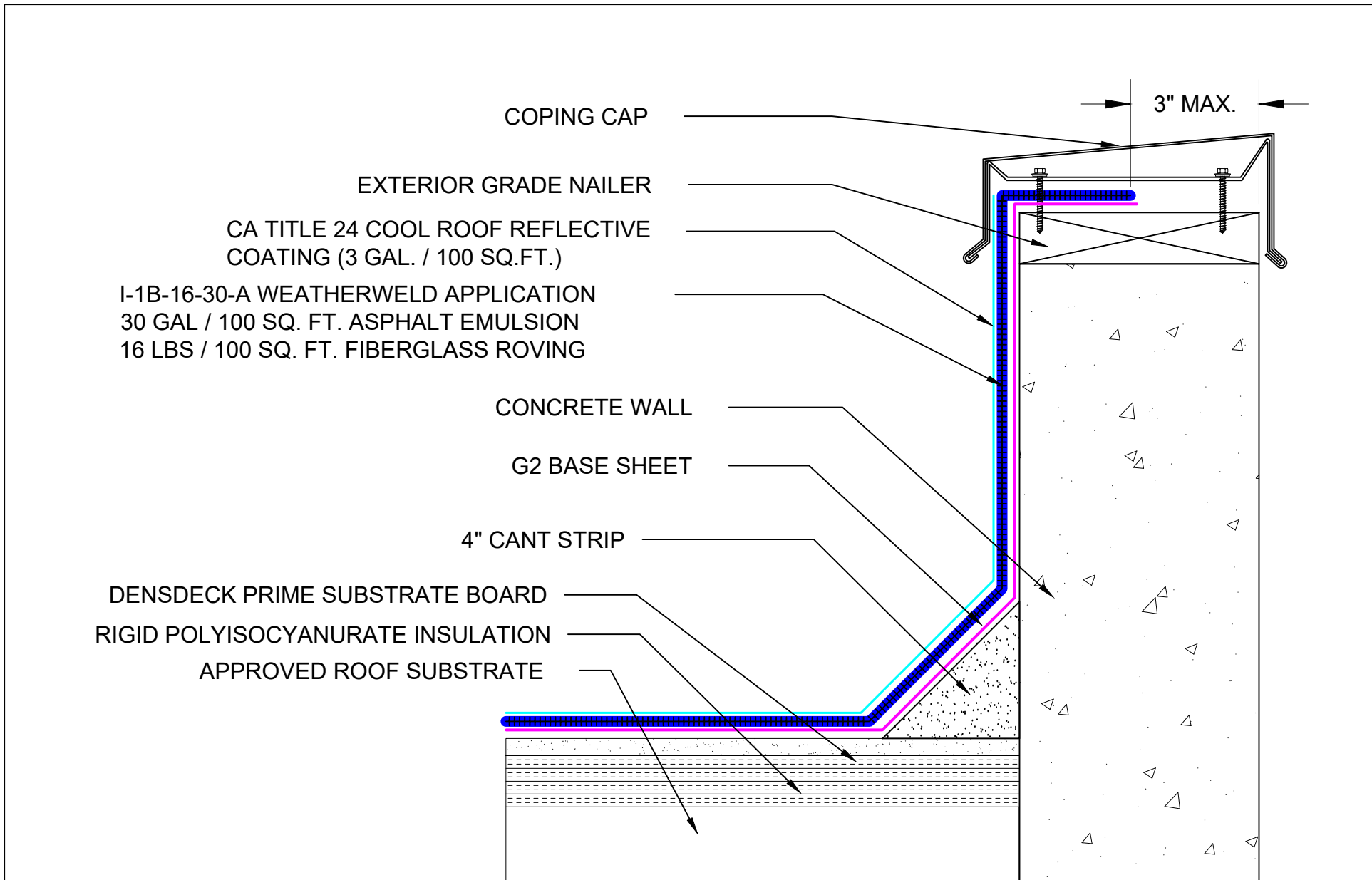
SYSTEM: I-1B-16-30-A Composite Membrane Over Approved Substrates	 <small>A DIVISION OF LIQUIFORM TECHNOLOGIES, INC.</small>	9757 7 th Street, Suite 803 Rancho Cucamonga, CA 91730-5297 (888) 440-3224 www.weatherweld.com		PREPARED FOR:	
		DRAWING TITLE: THRU WALL SCUPPER FLASHING AT CONCRETE WALL	DETAIL NUMBER: 356	DRAWN BY: R. Weygant	PROJECT:
		APPROVED BY: M. Jones	INSTALLED BY: TBD	DATE: 1/24/24	SCALE: 3" = 1'-0"



SYSTEM: I-1B-16-30-A Composite Membrane Over Approved Substrates	 A DIVISION OF LIQUIFORM TECHNOLOGIES, INC.	9757 7 th Street, Suite 803 Rancho Cucamonga, CA 91730-5297 (888) 440-3224 www.weatherweld.com		PREPARED FOR:	
		DRAWING TITLE: SKIRTED COUNTERFLASHING AT CONCRETE WALL	DETAIL NUMBER: 357	DRAWN BY: R. Weygant	PROJECT:
		APPROVED BY: M. Jones	INSTALLED BY: TBD	DATE: 1/24/24	SCALE: 3" = 1'-0"



<p>SYSTEM:</p> <p>I-1B-16-30-A</p> <p>Composite Membrane Over Approved Substrates</p>	<p>WEATHERWELD A DIVISION OF LIQUIFORM TECHNOLOGIES, INC.</p> <p>9757 7th Street, Suite 803 Rancho Cucamonga, CA 91730-5297 (888) 440-3224 www.weatherweld.com</p> <p>DRAWING TITLE: SKIRTED COPING AT CONCRETE WALL</p>	<p>PREPARED FOR:</p> <p>DETAIL NUMBER: 359</p> <table border="1"> <tr> <td data-bbox="1449 1421 1591 1469">DRAWN BY: R. Weygant</td> <td colspan="3" data-bbox="1591 1421 2003 1469">PROJECT:</td> </tr> <tr> <td data-bbox="1449 1469 1591 1518">APPROVED BY: M. Jones</td> <td data-bbox="1591 1469 1730 1518">INSTALLED BY: TBD</td> <td data-bbox="1730 1469 1866 1518">DATE: 1/24/24</td> <td data-bbox="1866 1469 2003 1518">SCALE: 3" = 1'-0"</td> </tr> </table>	DRAWN BY: R. Weygant	PROJECT:			APPROVED BY: M. Jones	INSTALLED BY: TBD	DATE: 1/24/24	SCALE: 3" = 1'-0"
DRAWN BY: R. Weygant	PROJECT:									
APPROVED BY: M. Jones	INSTALLED BY: TBD	DATE: 1/24/24	SCALE: 3" = 1'-0"							




COPING CAP
 EXTERIOR GRADE NAILER
 CA TITLE 24 COOL ROOF REFLECTIVE COATING (3 GAL. / 100 SQ.FT.)
 I-1B-16-30-A WEATHERWELD APPLICATION
 30 GAL / 100 SQ. FT. ASPHALT EMULSION
 16 LBS / 100 SQ. FT. FIBERGLASS ROVING

CONCRETE WALL
 G2 BASE SHEET

4" CANT STRIP
 DENSDECK PRIME SUBSTRATE BOARD
 RIGID POLYISOCYANURATE INSULATION
 APPROVED ROOF SUBSTRATE

3" MAX.

SYSTEM: I-1B-16-30-A Composite Membrane Over Approved Substrates	 <small>A DIVISION OF LIQUIFORM TECHNOLOGIES, INC.</small>	9757 7 th Street, Suite 803 Rancho Cucamonga, CA 91730-5297 (888) 440-3224 www.weatherweld.com		PREPARED FOR:	
		DRAWING TITLE: COPING DETAIL AT CONCRETE WALL (ALT)	DETAIL NUMBER: 360	DRAWN BY: R. Weygant	PROJECT:
		APPROVED BY: M. Jones	INSTALLED BY: TBD	DATE: 1/24/24	SCALE: 3" = 1'-0"

EXPANSION JOINT COVER - INSTALLED IN ACCORDANCE WITH
MANUFACTURER'S RECOMMENDATIONS

EXPANSION JOINT CURB

CA TITLE 24 COOL ROOF REFLECTIVE
COATING (3 GAL. / 100 SQ.FT.)

I-1B-16-30-A WEATHERWELD APPLICATION
30 GAL / 100 SQ. FT. ASPHALT EMULSION
16 LBS / 100 SQ. FT. FIBERGLASS ROVING

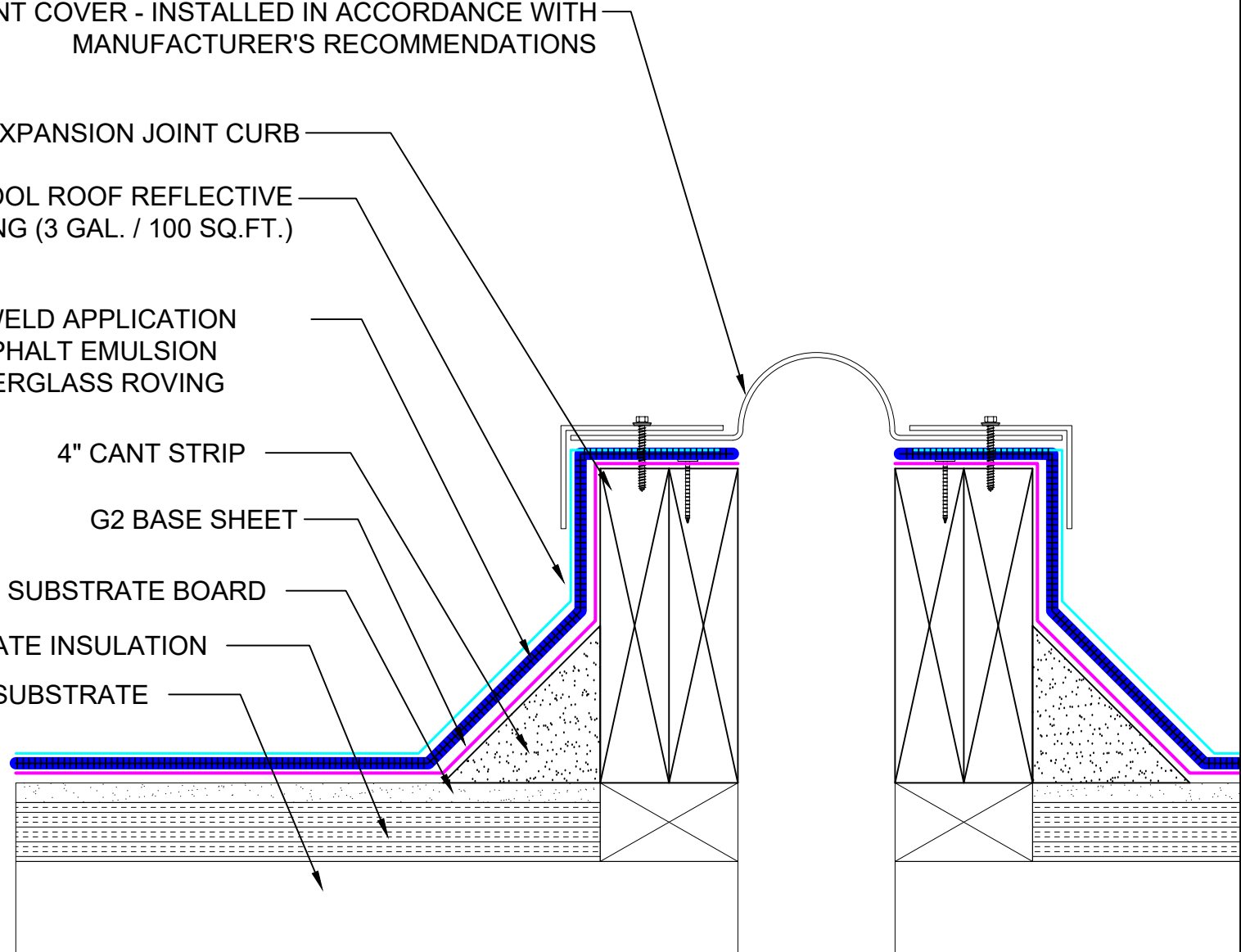
4" CANT STRIP

G2 BASE SHEET

DENSDECK PRIME SUBSTRATE BOARD

RIGID POLYISOCYANURATE INSULATION

APPROVED ROOF SUBSTRATE



SYSTEM:

I-1B-16-30-A

Composite Membrane Over
Approved Substrates

WEATHERWELD

A DIVISION OF LIQUIFORM TECHNOLOGIES, INC.

9757 7th Street, Suite 803
Rancho Cucamonga, CA 91730-5297
(888) 440-3224 | www.weatherweld.com

DRAWING TITLE:

EXPANSION JOINT

DETAIL NUMBER:

401

PREPARED FOR:

DRAWN BY:

R. Weygant

PROJECT:

APPROVED BY:
M. Jones

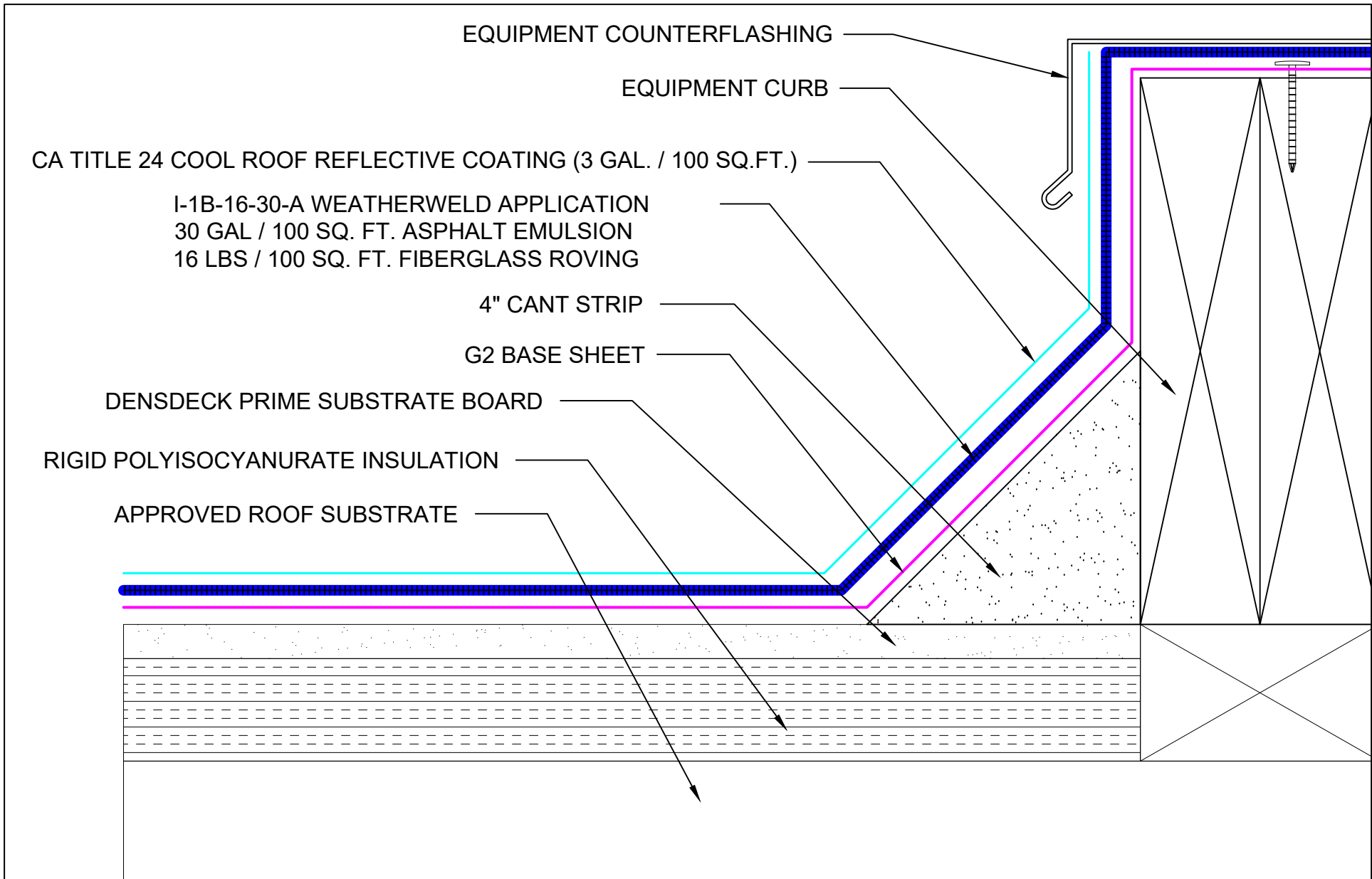
INSTALLED BY:
TBD


DATE:

1/24/24

SCALE:

3" = 1'-0"



SYSTEM: I-1B-16-30-A Composite Membrane Over Approved Substrates	 <small>A DIVISION OF LIQUIFORM TECHNOLOGIES, INC.</small>	9757 7 th Street, Suite 803 Rancho Cucamonga, CA 91730-5297 (888) 440-3224 www.weatherweld.com		PREPARED FOR:	
		DRAWING TITLE: EQUIPMENT CURB FLASHING	DETAIL NUMBER: 402	DRAWN BY: R. Weygant	PROJECT:
		APPROVED BY: M. Jones	INSTALLED BY: TBD	DATE: 1/24/24	SCALE: 6" = 1'-0"

UNIT SKYLIGHT - FASTENED IN ACCORDANCE WITH SKYLIGHT MANUFACTURERS' RECOMMENDATIONS

SKYLIGHT CURB

CA TITLE 24 COOL ROOF REFLECTIVE COATING (3 GAL. / 100 SQ.FT.)

I-1B-16-30-A WEATHERWELD APPLICATION
 30 GAL / 100 SQ. FT. ASPHALT EMULSION
 16 LBS / 100 SQ. FT. FIBERGLASS ROVING

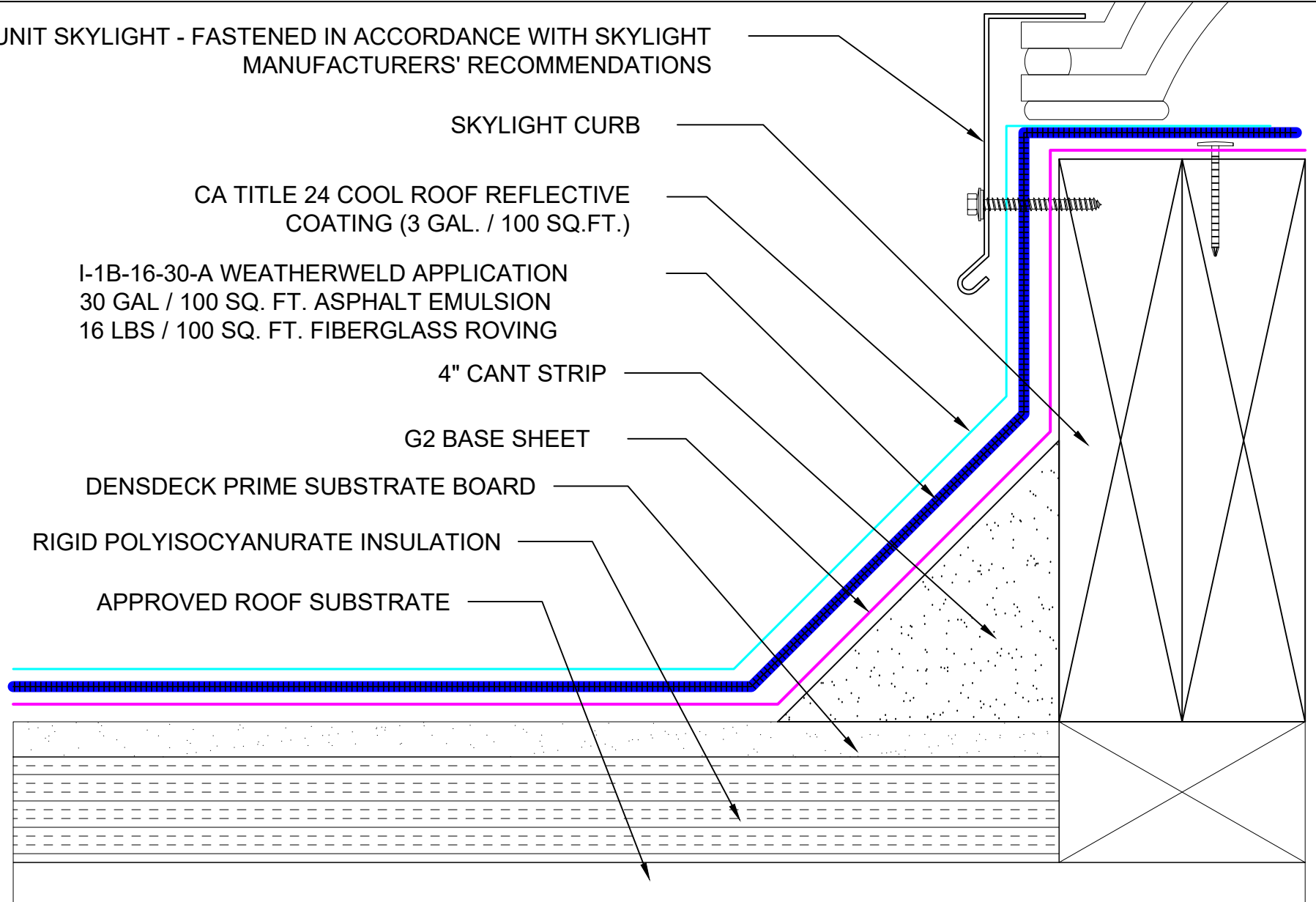
4" CANT STRIP

G2 BASE SHEET

DENSDECK PRIME SUBSTRATE BOARD

RIGID POLYISOCYANURATE INSULATION

APPROVED ROOF SUBSTRATE



SYSTEM:

I-1B-16-30-A

Composite Membrane Over
Approved Substrates

WEATHERWELD

A DIVISION OF LIQUIFORM TECHNOLOGIES, INC.

9757 7th Street, Suite 803
 Rancho Cucamonga, CA 91730-5297
 (888) 440-3224 | www.weatherweld.com

DRAWING TITLE:

CURB MOUNTED SKYLIGHT FLASHING

DETAIL NUMBER:

403

PREPARED FOR:

DRAWN BY:
R. Weygant

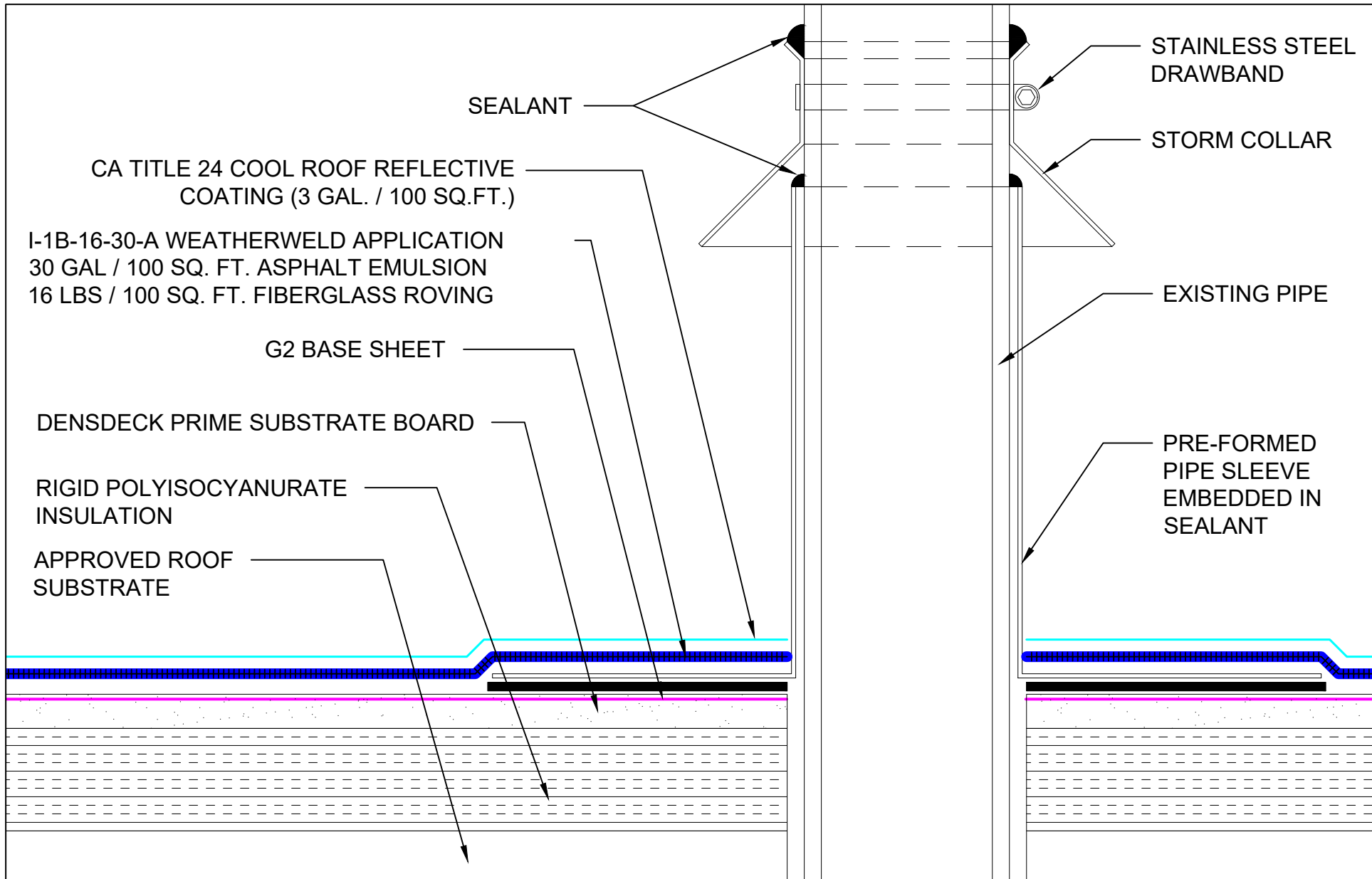
PROJECT:


APPROVED BY:
M. Jones

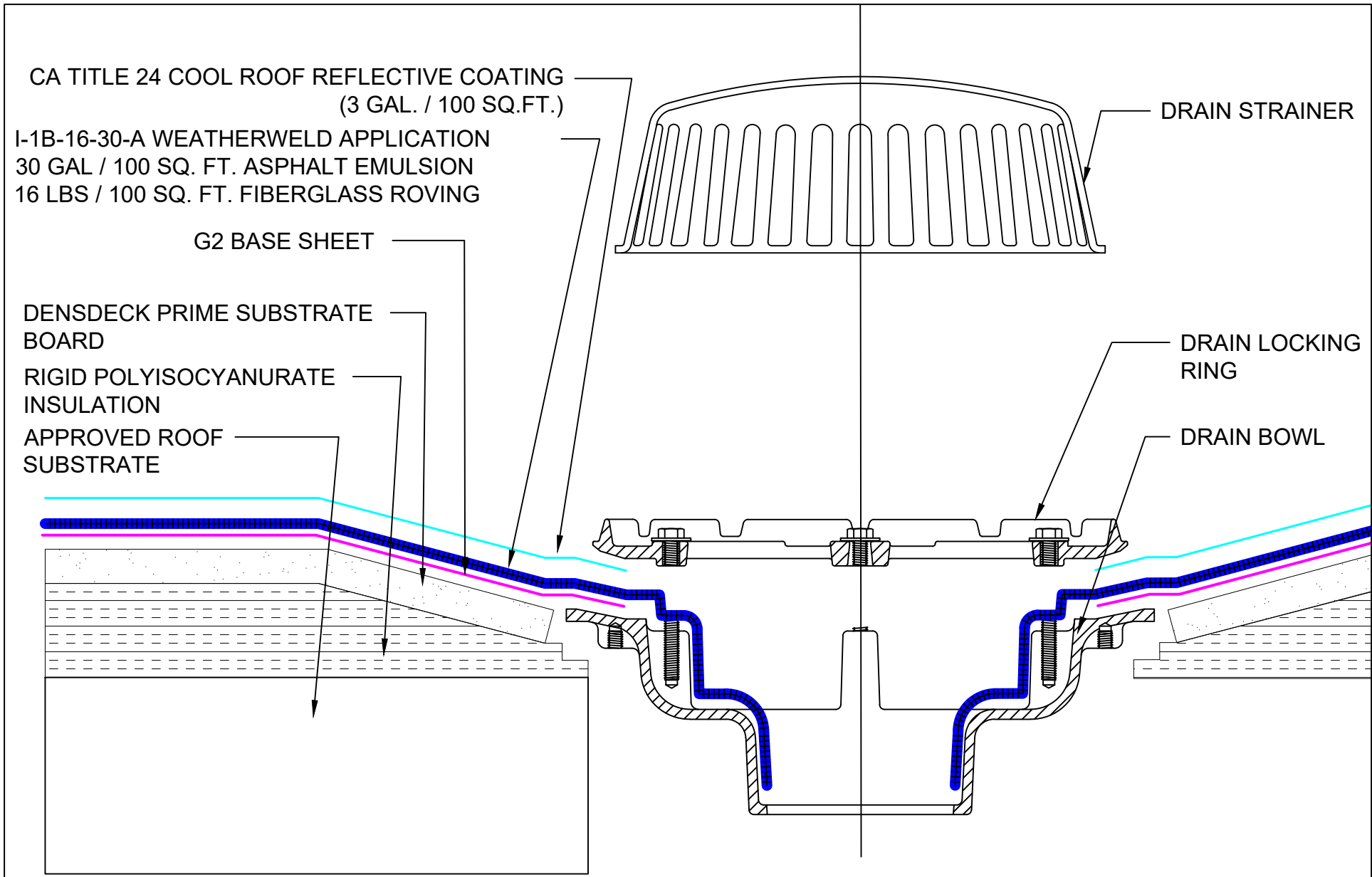
INSTALLED BY:
TBD


DATE:
1/24/24

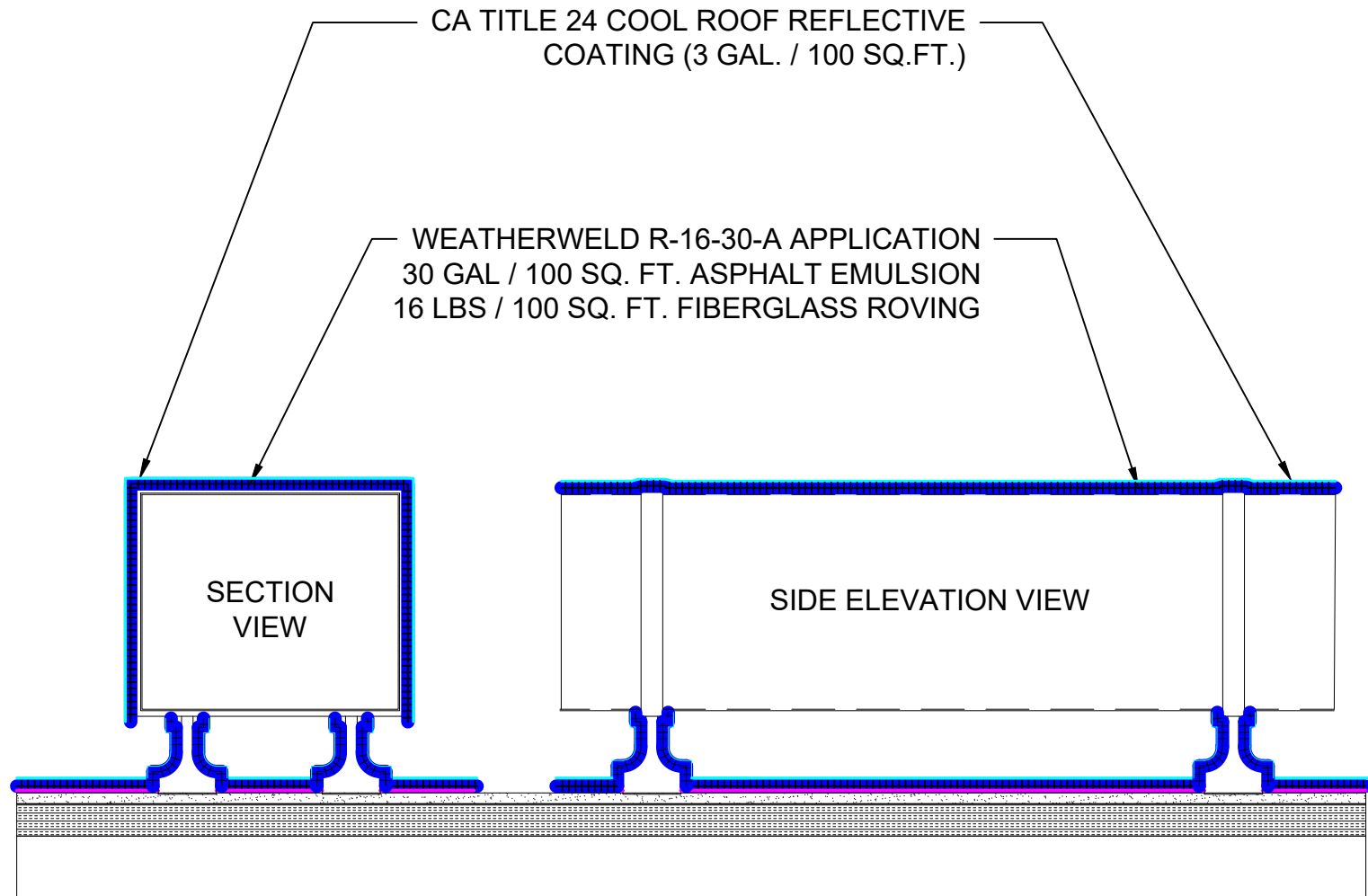
SCALE:
6" = 1'-0"



SYSTEM: I-1B-16-30-A Composite Membrane Over Approved Substrates	 <small>A DIVISION OF LIQUIFORM TECHNOLOGIES, INC.</small>	9757 7 th Street, Suite 803 Rancho Cucamonga, CA 91730-5297 (888) 440-3224 www.weatherweld.com		PREPARED FOR:	
		DRAWING TITLE: PIPE PENETRATION FLASHING	DETAIL NUMBER: 501	DRAWN BY: R. Weygant	PROJECT:
		APPROVED BY: M. Jones	INSTALLED BY: TBD	DATE: 1/24/24	SCALE: 6" = 1'-0"



SYSTEM:	 A DIVISION OF LIQUIFORM TECHNOLOGIES, INC. 9757 7 th Street, Suite 803 Rancho Cucamonga, CA 91730-5297 (888) 440-3224 www.weatherweld.com	PREPARED FOR:			
I-1B-16-30-A Composite Membrane Over Approved Substrates		DRAWING TITLE:	DETAIL NUMBER:	DRAWN BY:	PROJECT:
	DRAIN DETAIL	502	R. Weygant		
			APPROVED BY: M. Jones	INSTALLED BY: TBD	
			DATE: 1/24/24	SCALE: 6" = 1'-0"	



SYSTEM:

I-1B-16-30-A

Composite Membrane Over
Approved Substrates



A DIVISION OF LIQUIFORM TECHNOLOGIES, INC.

9757 7th Street, Suite 803
Rancho Cucamonga, CA 91730-5297
(888) 440-3224 | www.weatherweld.com

PREPARED FOR:

DRAWING TITLE:

ROOFTOP DUCT ENCAPSULATION

DETAIL NUMBER:

503

DRAWN BY:

R. Weygant

PROJECT:

APPROVED BY:
M. Jones

INSTALLED BY:
TBD

DATE:
1/24/24

SCALE:
1 1/2" = 1'-0"