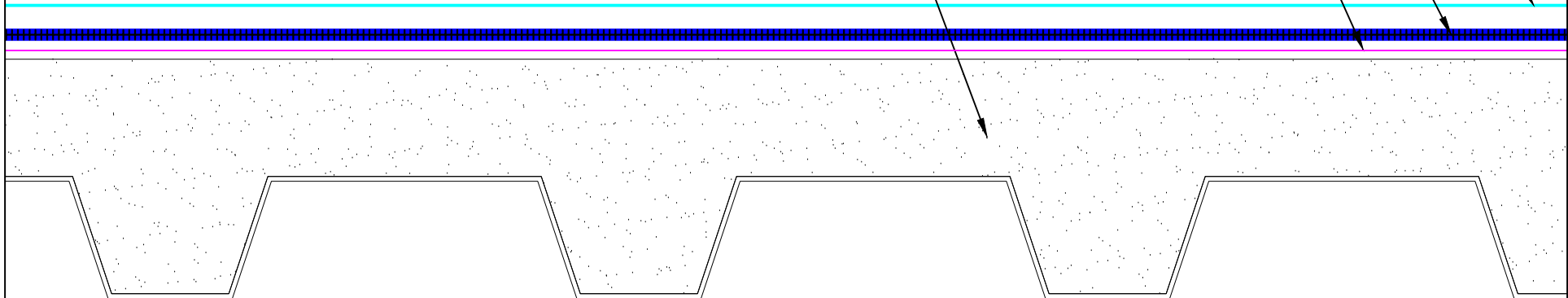


CA TITLE 24 COOL ROOF REFLECTIVE COATING
(2 COATS @ 1.5 GAL. = 3 GAL. / 100 SQ.FT.)

SPECIFIED FLUID APPLIED ROOF MEMBRANE
30 GAL / 100 SQ. FT. ASPHALT EMULSION
16 LBS / 100 SQ. FT. FIBERGLASS ROVING

G2 BASE SHEET ATTACHED TO DECK WITH
APPROVED FASTENERS

EXISTING LWIC DECK



Roof System:
NCN-1B-16-30-A



9757 7th Street, Suite 803
Rancho Cucamonga, CA 91730-5297
(888) 440-3224 | www.weatherweld.com

PROJECT:
DRAWN BY: RW
CONTRACTOR:

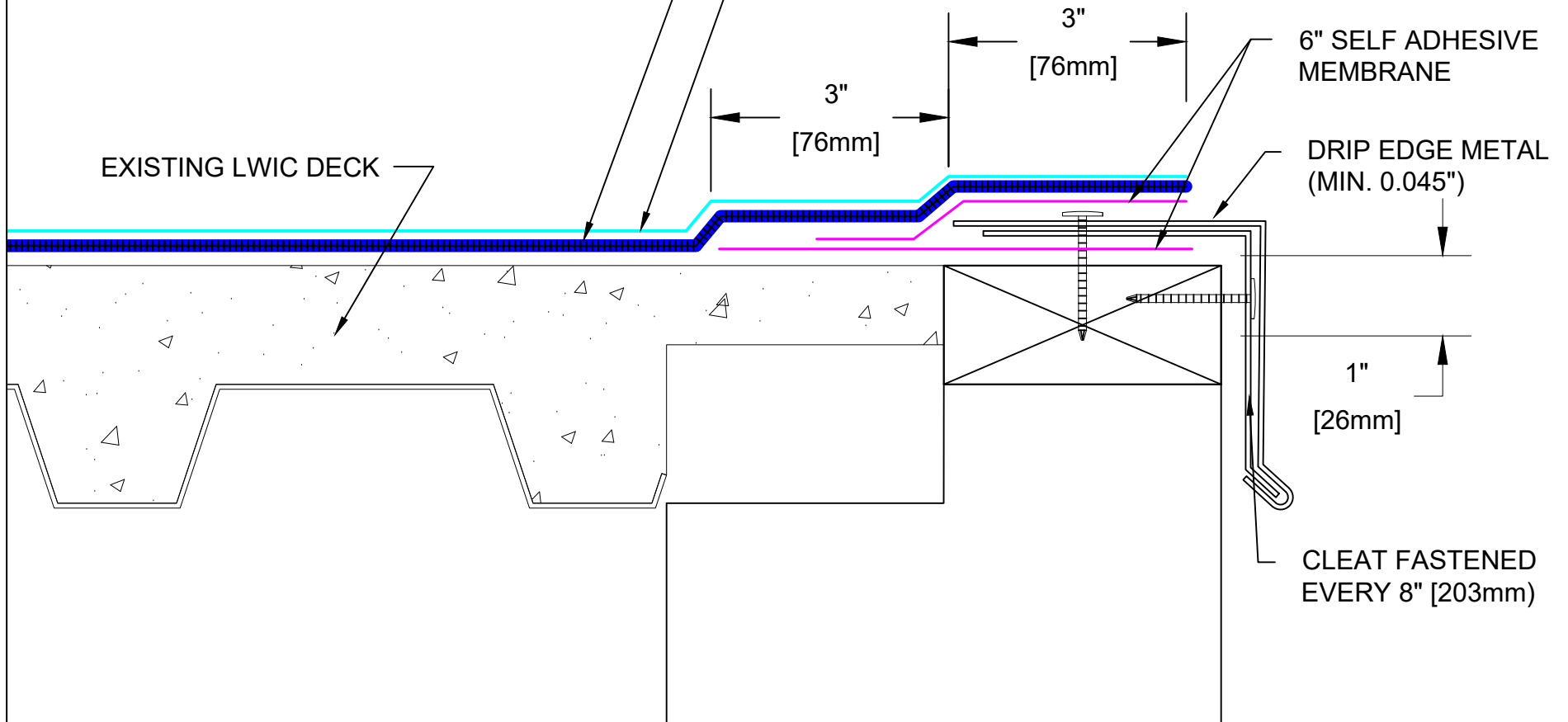
DRAWING TITLE: **SYSTEM OVERVIEW**

DETAIL NUMBER: **101**

APPROVED BY: MJ
INSTALLED BY:
DATE: 3/26/25
SCALE: NTS

SPECIFIED FLUID APPLIED ROOF MEMBRANE
 30 GAL / 100 SQ. FT. ASPHALT EMULSION
 16 LBS / 100 SQ. FT. FIBERGLASS ROVING

CA TITLE 24 COOL ROOF REFLECTIVE COATING
 (2 COATS @ 1.5 GAL. = 3 GAL. / 100 SQ.FT.)



Roof System:
NCN-1B-16-30-A

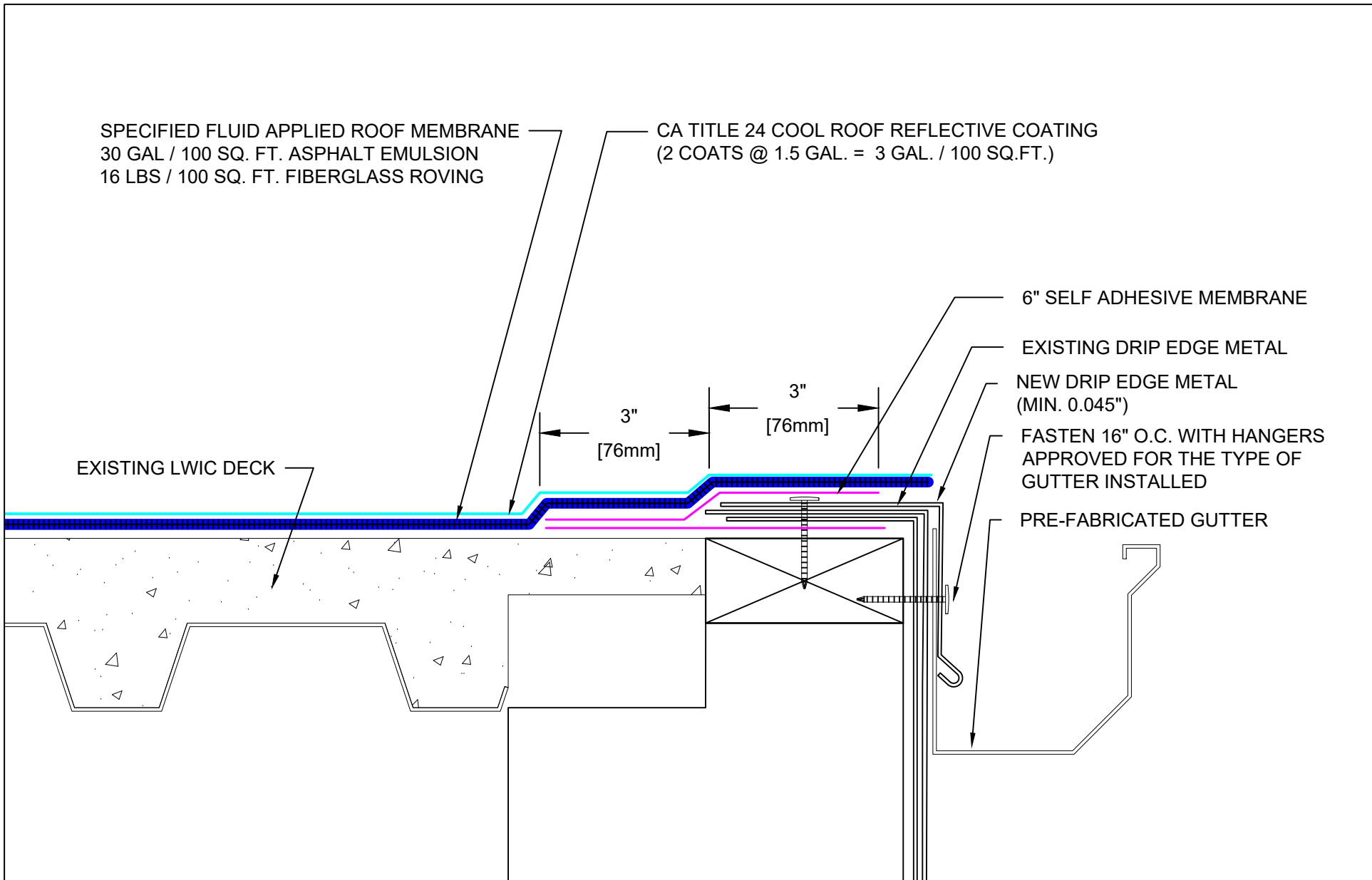


9757 7th Street, Suite 803
 Rancho Cucamonga, CA 91730-5297
 (888) 440-3224 | www.weatherweld.com

PROJECT:			
DRAWN BY: RW		CONTRACTOR:	
APPROVED BY: MJ		INSTALLED BY: TBD	DATE: 3/26/25
		SCALE: 6" = 1'-0"	

DRAWING TITLE:
EDGE FLASHING

DETAIL NUMBER:
201



Roof System:

NCN-1B-16-30-A

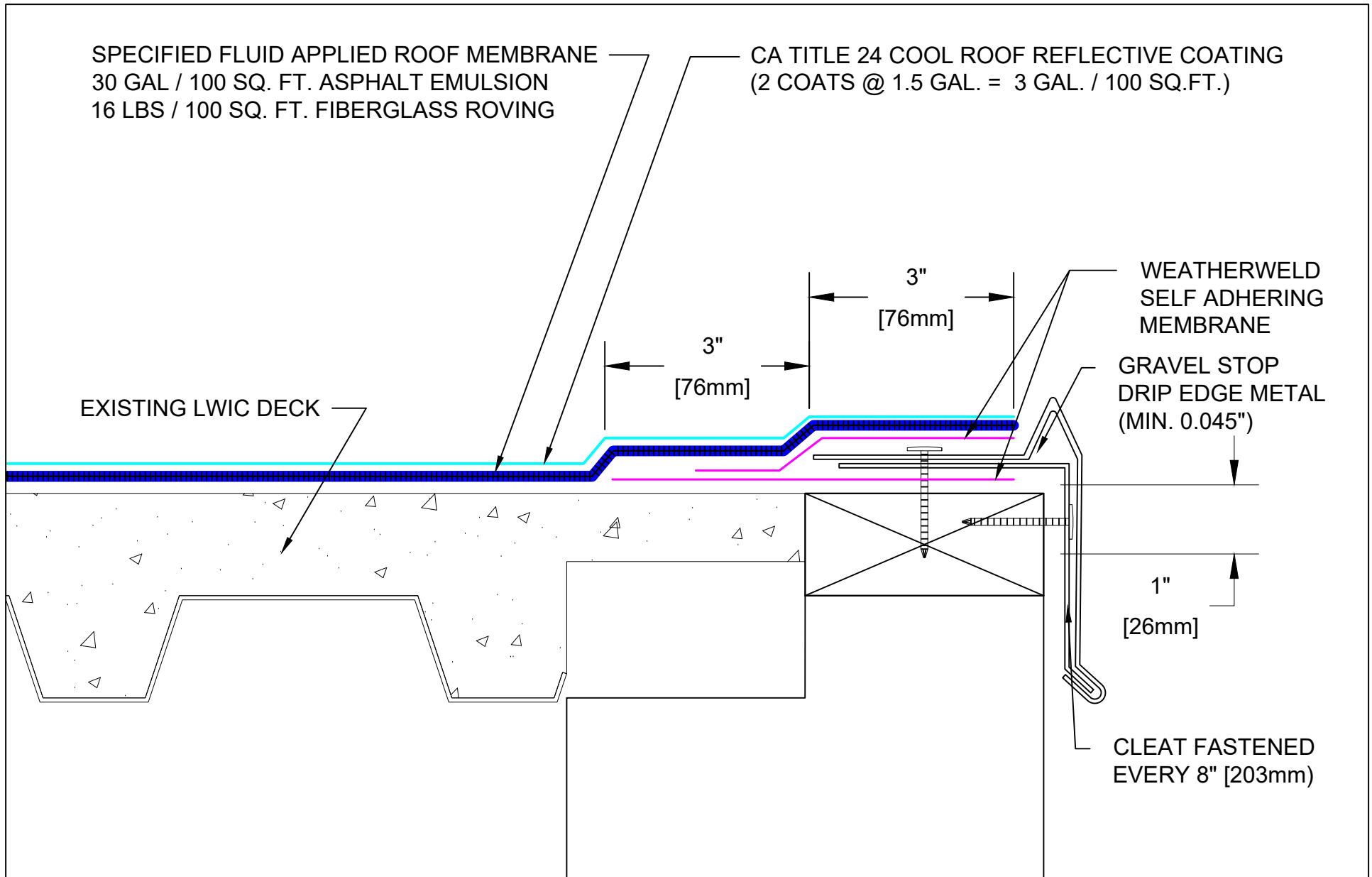
WEATHERWELD
 ROOFING MADE SIMPLE
 A DIVISION OF LIQUIFORM TECHNOLOGIES, INC.

9757 7th Street, Suite 803
 Rancho Cucamonga, CA 91730-5297
 (888) 440-3224 | www.weatherweld.com

DRAWING TITLE:
GUTTER EDGE FLASHING - RETROFIT

DETAIL NUMBER:
205

PROJECT:			
DRAWN BY: RW	CONTRACTOR:		
APPROVED BY: MJ	INSTALLED BY: TBD	DATE: 3/26/25	SCALE: NTS



Roof System:

NCN-1B-16-30-A

WEATHERWELD
ROOFING MADE SIMPLE
A DIVISION OF LIQUIFORM TECHNOLOGIES, INC.

9757 7th Street, Suite 803
Rancho Cucamonga, CA 91730-5297
(888) 440-3224 | www.weatherweld.com

DRAWING TITLE:
EDGE TERMINATION W/ GRAVEL STOP

DETAIL NUMBER:
207

PROJECT:

DRAWN BY:
RW

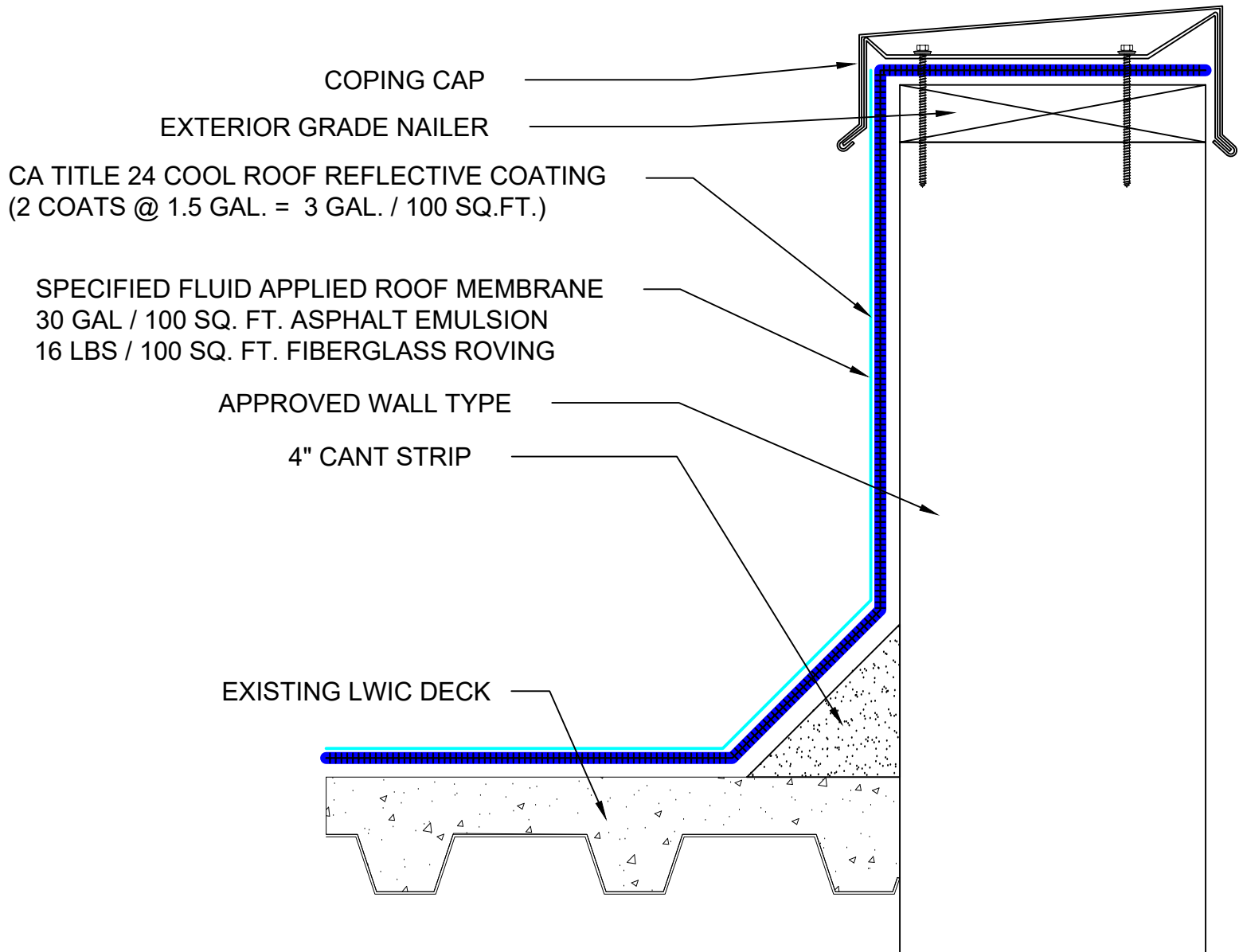
CONTRACTOR:

APPROVED BY:
MJ

INSTALLED BY:
TBD

DATE:
3/26/25

SCALE:
NTS



Roof System:

NCN-1B-16-30-A



9757 7th Street, Suite 803
 Rancho Cucamonga, CA 91730-5297
 (888) 440-3224 | www.weatherweld.com

PROJECT:

DRAWING TITLE:

COPING CAP FLASHING

DETAIL NUMBER:

301

DRAWN BY:

RW

CONTRACTOR:

APPROVED BY:

MJ

INSTALLED BY:

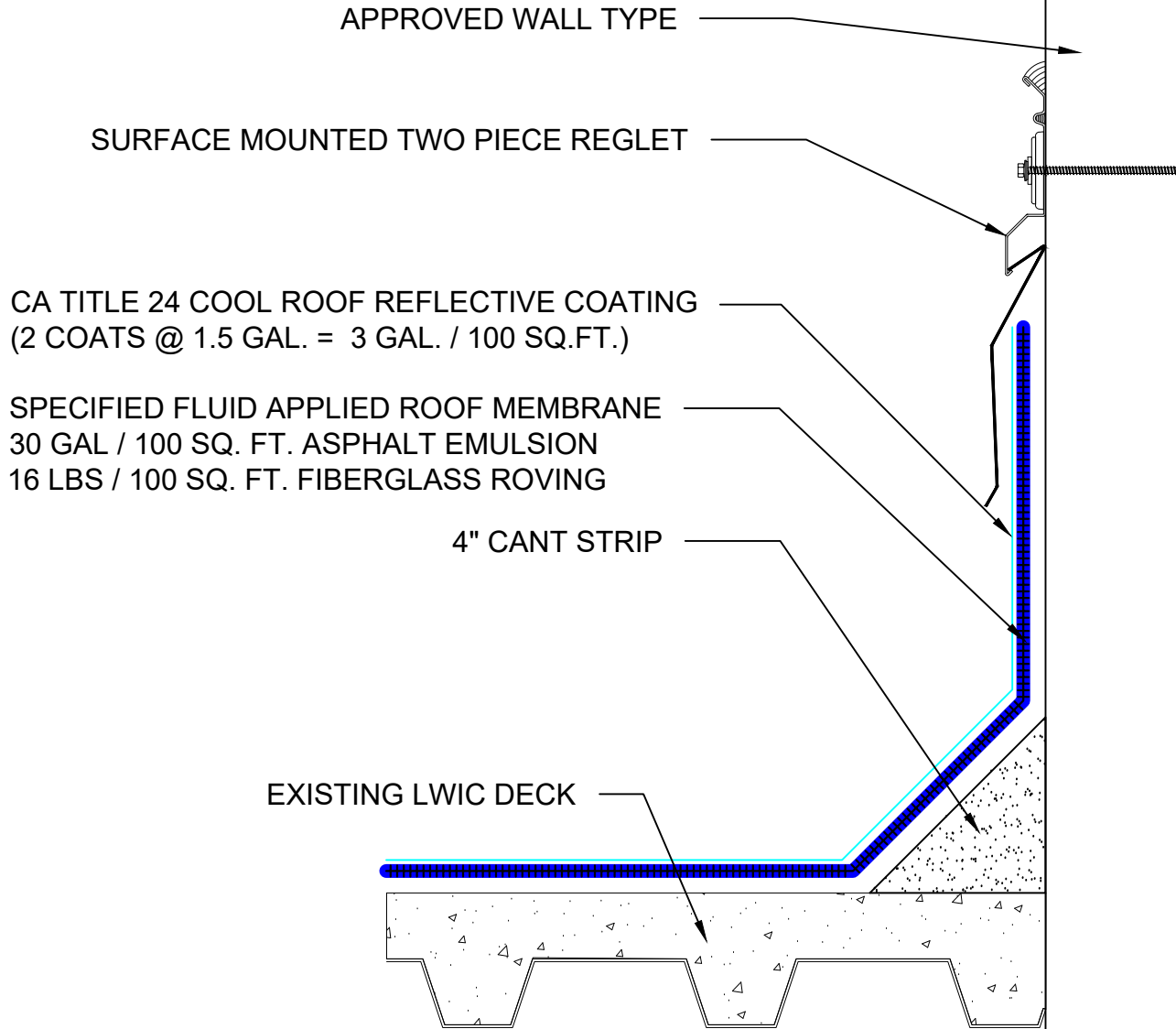
TBD

DATE:

3/26/25

SCALE:

3" = 1'-0"



Roof System:

NCN-1B-16-30-A



9757 7th Street, Suite 803
Rancho Cucamonga, CA 91730-5297
(888) 440-3224 | www.weatherweld.com

PROJECT:

DRAWING TITLE:

SURFACE MOUNTED REGLET

DETAIL NUMBER:

302

DRAWN BY:

RW

CONTRACTOR:

APPROVED BY:

MJ

INSTALLED BY:

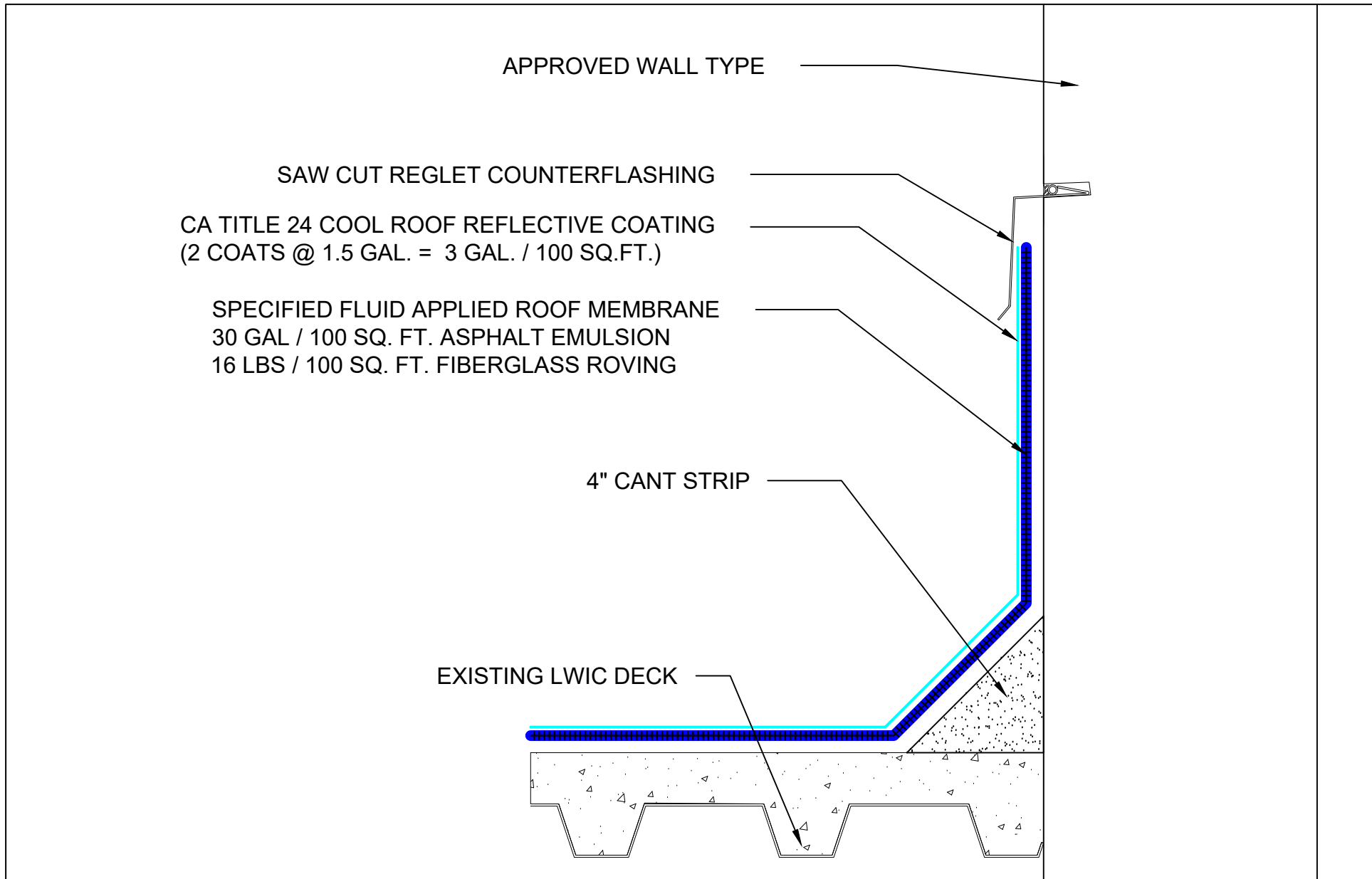
TBD


DATE:

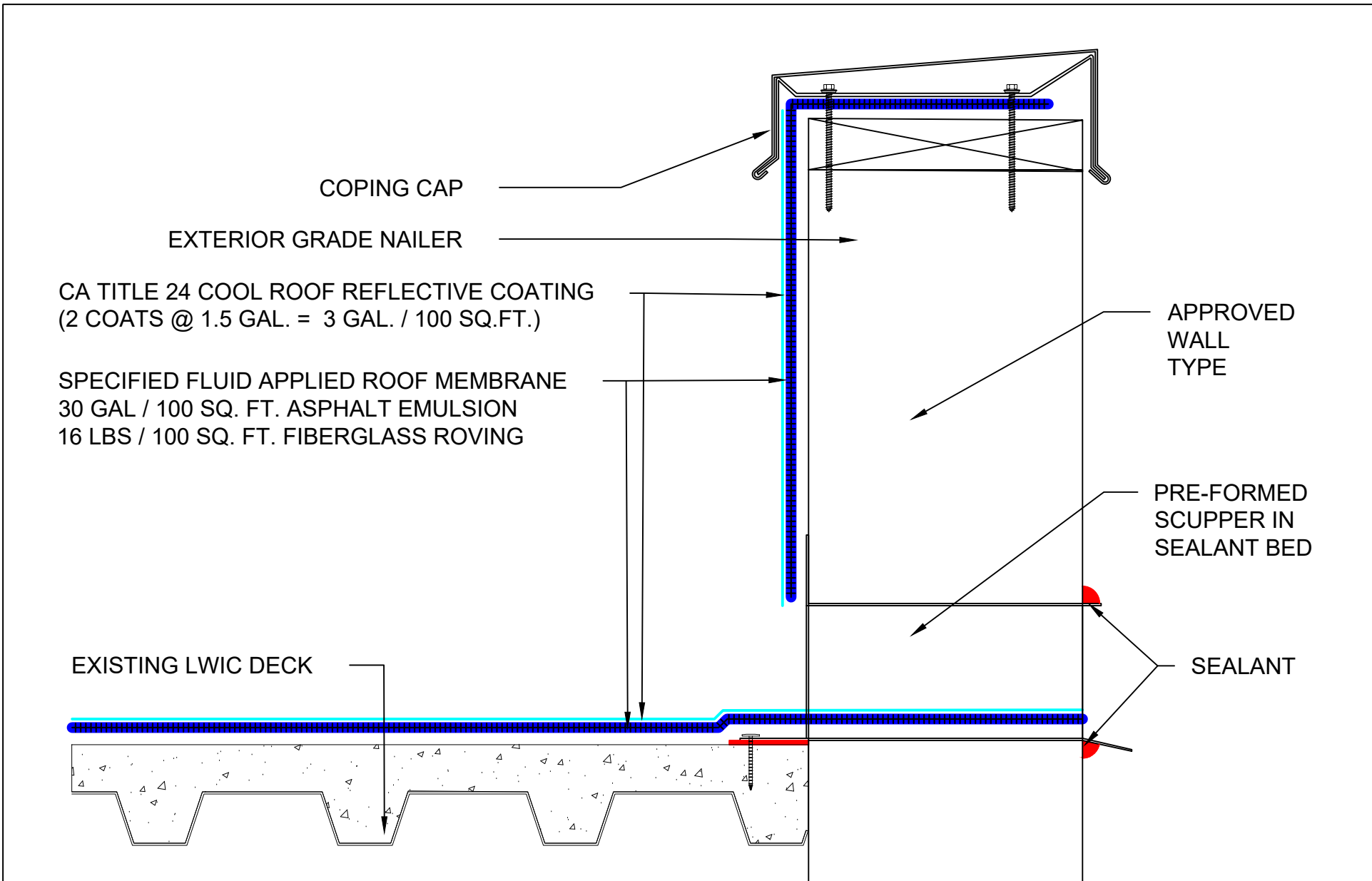
3/26/25

SCALE:

3" = 1'-0"



Roof System: <h1 style="margin: 0;">NCN-1B-16-30-A</h1>	 <p style="font-size: small; margin: 0;"> 9757 7th Street, Suite 803 Rancho Cucamonga, CA 91730-5297 (888) 440-3224 www.weatherweld.com </p>	PROJECT:			
DRAWING TITLE: <h2 style="margin: 0;">SAW CUT REGLET</h2>	DETAIL NUMBER: <h2 style="margin: 0;">303</h2>	DRAWN BY: RW	CONTRACTOR:		
		APPROVED BY: MJ	INSTALLED BY: TBD	DATE: 3/26/25	SCALE: 3" = 1'-0"



Roof System:
NCN-1B-16-30-A



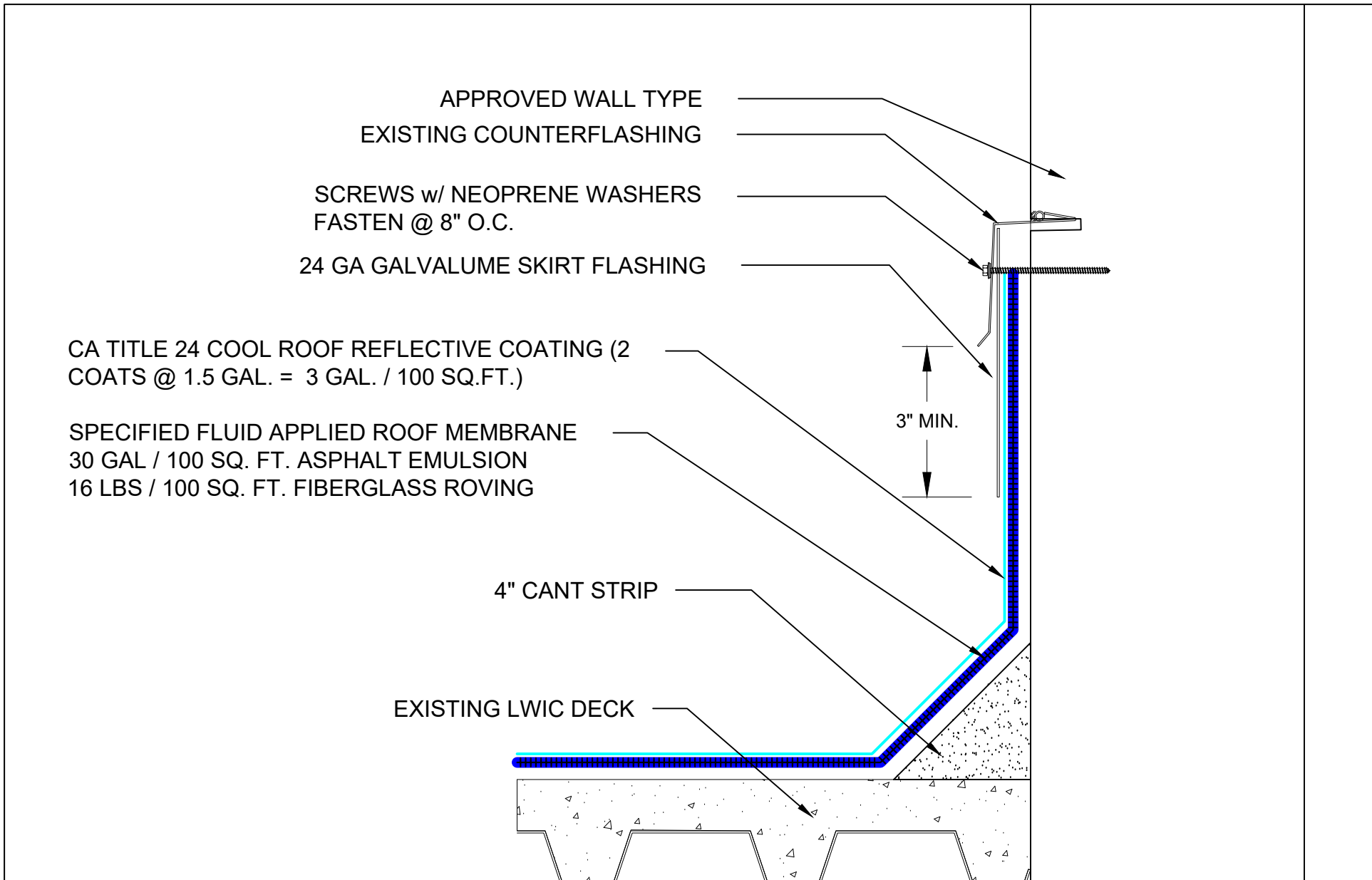
9757 7th Street, Suite 803
Rancho Cucamonga, CA 91730-5297
(888) 440-3224 | www.weatherweld.com

PROJECT:
DRAWN BY: RW
CONTRACTOR:

DRAWING TITLE:
THRU WALL SCUPPER FLASHING

DETAIL NUMBER:
306

APPROVED BY: MJ	INSTALLED BY: TBD	DATE: 3/26/25	SCALE: 3" = 1'-0"
-----------------	-------------------	---------------	-------------------



Roof System:

NCN-1B-16-30-A

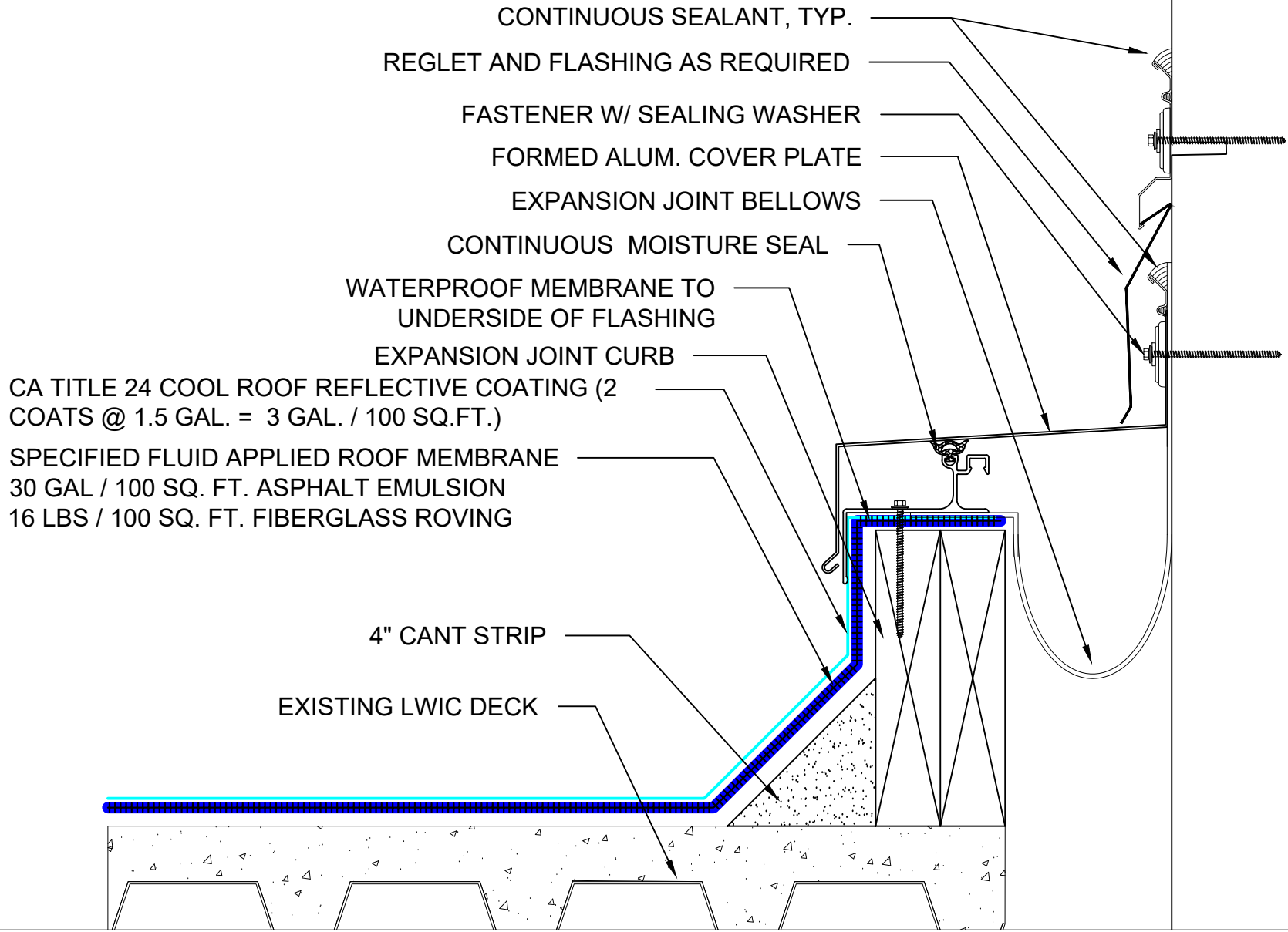
WEATHERWELD
ROOFING MADE SIMPLE
A DIVISION OF LIQUIFORM TECHNOLOGIES, INC.

9757 7th Street, Suite 803
Rancho Cucamonga, CA 91730-5297
(888) 440-3224 | www.weatherweld.com

DRAWING TITLE: **SKIRTED COUNTERFLASHING**

DETAIL NUMBER: **307**

PROJECT:			
DRAWN BY: RW	CONTRACTOR:		
APPROVED BY: MJ	INSTALLED BY: TBD	DATE: 3/26/25	SCALE: 3" = 1'-0"



CONTINUOUS SEALANT, TYP.
 REGLET AND FLASHING AS REQUIRED
 FASTENER W/ SEALING WASHER
 FORMED ALUM. COVER PLATE
 EXPANSION JOINT BELLOWS
 CONTINUOUS MOISTURE SEAL
 WATERPROOF MEMBRANE TO
 UNDERSIDE OF FLASHING
 EXPANSION JOINT CURB

CA TITLE 24 COOL ROOF REFLECTIVE COATING (2
 COATS @ 1.5 GAL. = 3 GAL. / 100 SQ.FT.)
 SPECIFIED FLUID APPLIED ROOF MEMBRANE
 30 GAL / 100 SQ. FT. ASPHALT EMULSION
 16 LBS / 100 SQ. FT. FIBERGLASS ROVING

4" CANT STRIP
 EXISTING LWIC DECK

Roof System:	 WEATHERWELD ROOFING MADE SIMPLE <small>A DIVISION OF LIQUIFORM TECHNOLOGIES, INC.</small>	PROJECT:
NCN-1B-16-30-A		9757 7 th Street, Suite 803 Rancho Cucamonga, CA 91730-5297 (888) 440-3224 www.weatherweld.com
DRAWING TITLE: ROOF TO WALL EXPANSION JOINT		DETAIL NUMBER: 308
		APPROVED BY: MJ INSTALLED BY: TBD DATE: 3/26/25 SCALE: 3" = 1'-0"

COPING CAP
 SCREWS w/ NEOPRENE WASHERS - FASTEN @ 8" O.C.

24 GA GALVALUME SKIRT FLASHING

CA TITLE 24 COOL ROOF REFLECTIVE COATING
 (2 COATS @ 1.5 GAL. = 3 GAL. / 100 SQ.FT.)

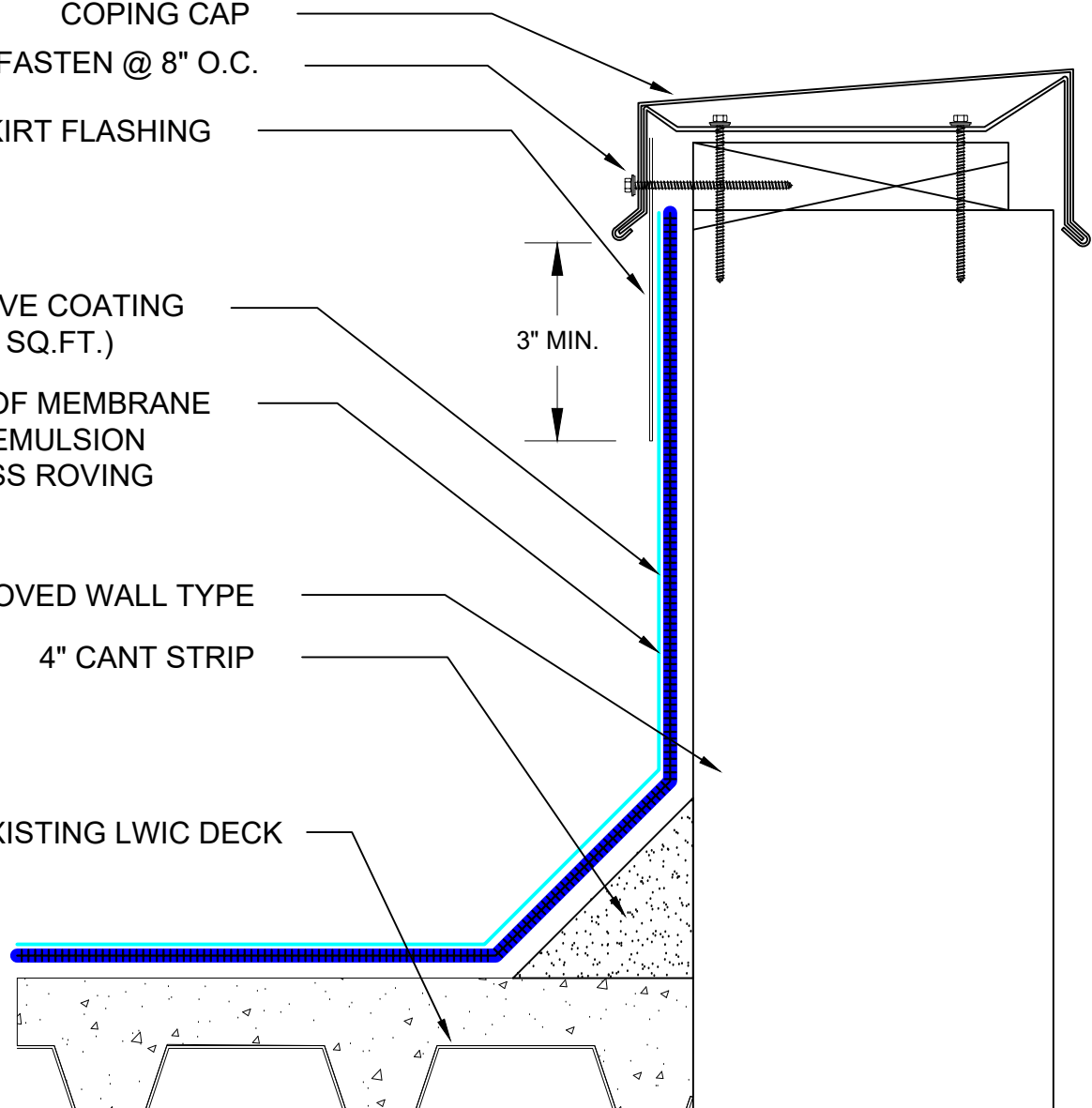
SPECIFIED FLUID APPLIED ROOF MEMBRANE
 30 GAL / 100 SQ. FT. ASPHALT EMULSION
 16 LBS / 100 SQ. FT. FIBERGLASS ROVING

APPROVED WALL TYPE

4" CANT STRIP

EXISTING LWIC DECK

3" MIN.



Roof System:

NCN-1B-16-30-A



9757 7th Street, Suite 803
 Rancho Cucamonga, CA 91730-5297
 (888) 440-3224 | www.weatherweld.com

PROJECT:

DRAWING TITLE:

SKIRTED COPING CAP

DETAIL NUMBER:

309

DRAWN BY:

RW

CONTRACTOR:

APPROVED BY:

MJ

INSTALLED BY:

TBD

DATE:

3/26/25

SCALE:

3" = 1'-0"

EXPANSION JOINT COVER - INSTALLED IN ACCORDANCE WITH MANUFACTURER'S RECOMMENDATIONS

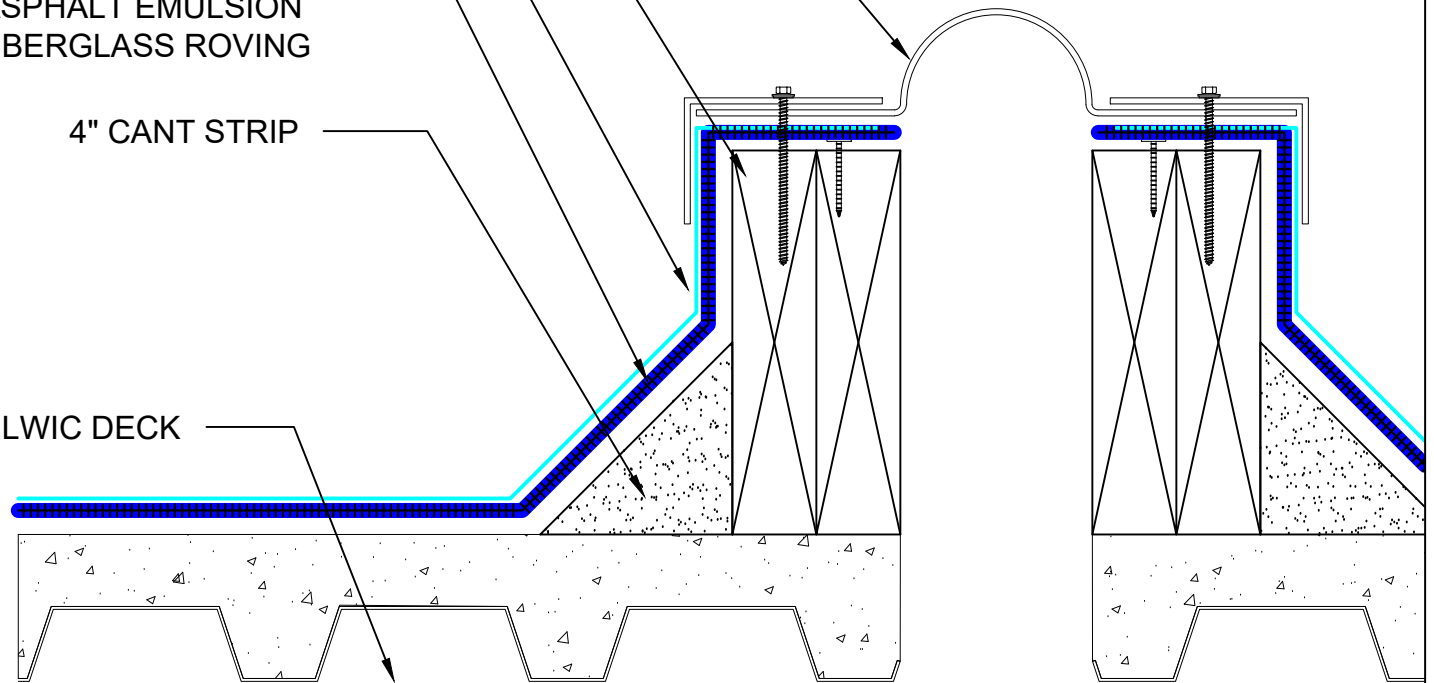
EXPANSION JOINT CURB

CA TITLE 24 COOL ROOF REFLECTIVE COATING (2 COATS @ 1.5 GAL. = 3 GAL. / 100 SQ.FT.)

SPECIFIED FLUID APPLIED ROOF MEMBRANE
30 GAL / 100 SQ. FT. ASPHALT EMULSION
16 LBS / 100 SQ. FT. FIBERGLASS ROVING

4" CANT STRIP

EXISTING LWIC DECK



Roof System:

NCN-1B-16-30-A



9757 7th Street, Suite 803
Rancho Cucamonga, CA 91730-5297
(888) 440-3224 | www.weatherweld.com

PROJECT:

DRAWING TITLE:

EXPANSION JOINT

DETAIL NUMBER:

401

DRAWN BY:

RW

CONTRACTOR:

APPROVED BY:

MJ

INSTALLED BY:

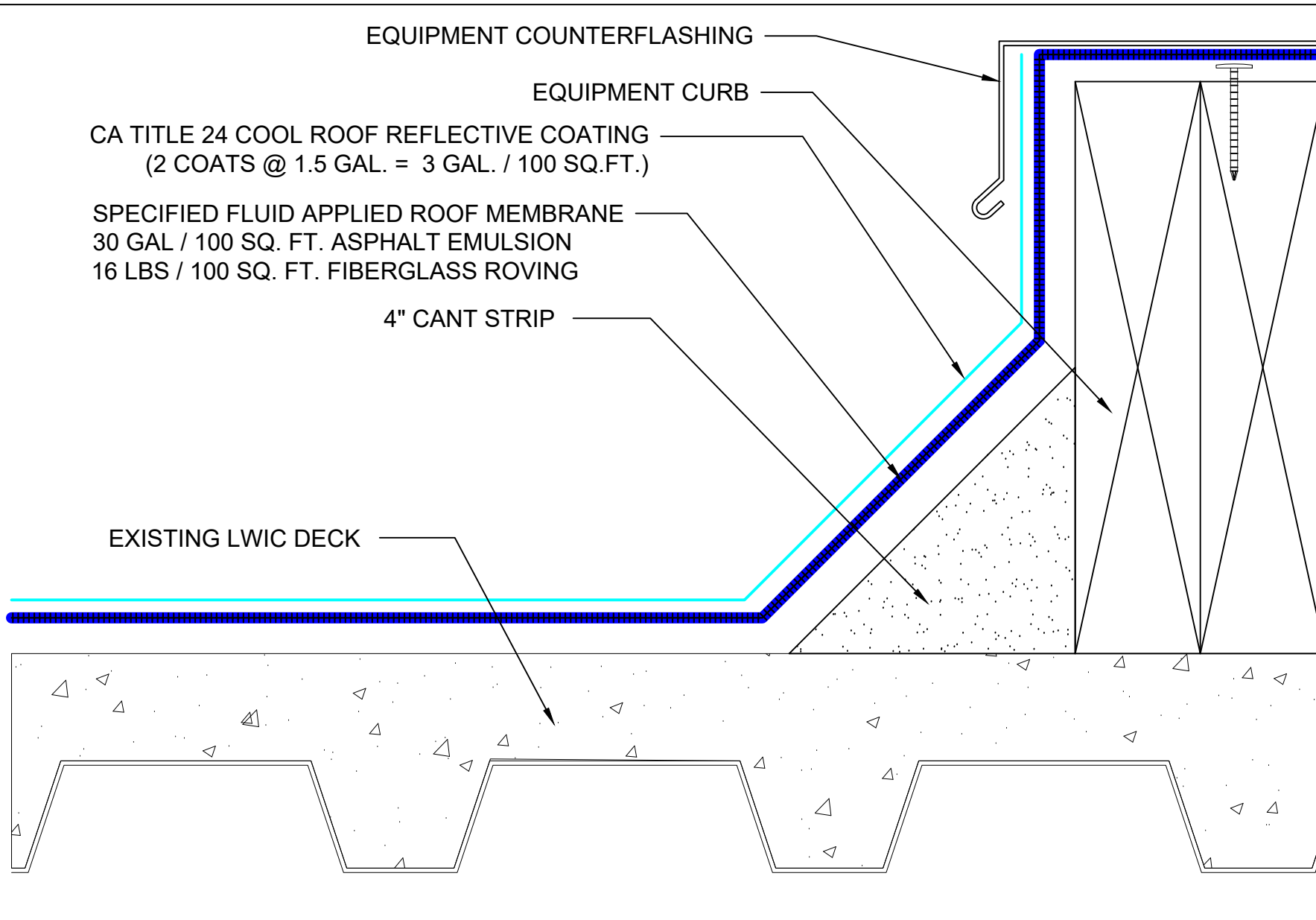
TBD

DATE:

3/26/25

SCALE:

3" = 1'-0"



EQUIPMENT COUNTERFLASHING

EQUIPMENT CURB

CA TITLE 24 COOL ROOF REFLECTIVE COATING
(2 COATS @ 1.5 GAL. = 3 GAL. / 100 SQ.FT.)

SPECIFIED FLUID APPLIED ROOF MEMBRANE
30 GAL / 100 SQ. FT. ASPHALT EMULSION
16 LBS / 100 SQ. FT. FIBERGLASS ROVING

4" CANT STRIP

EXISTING LWIC DECK

Roof System:

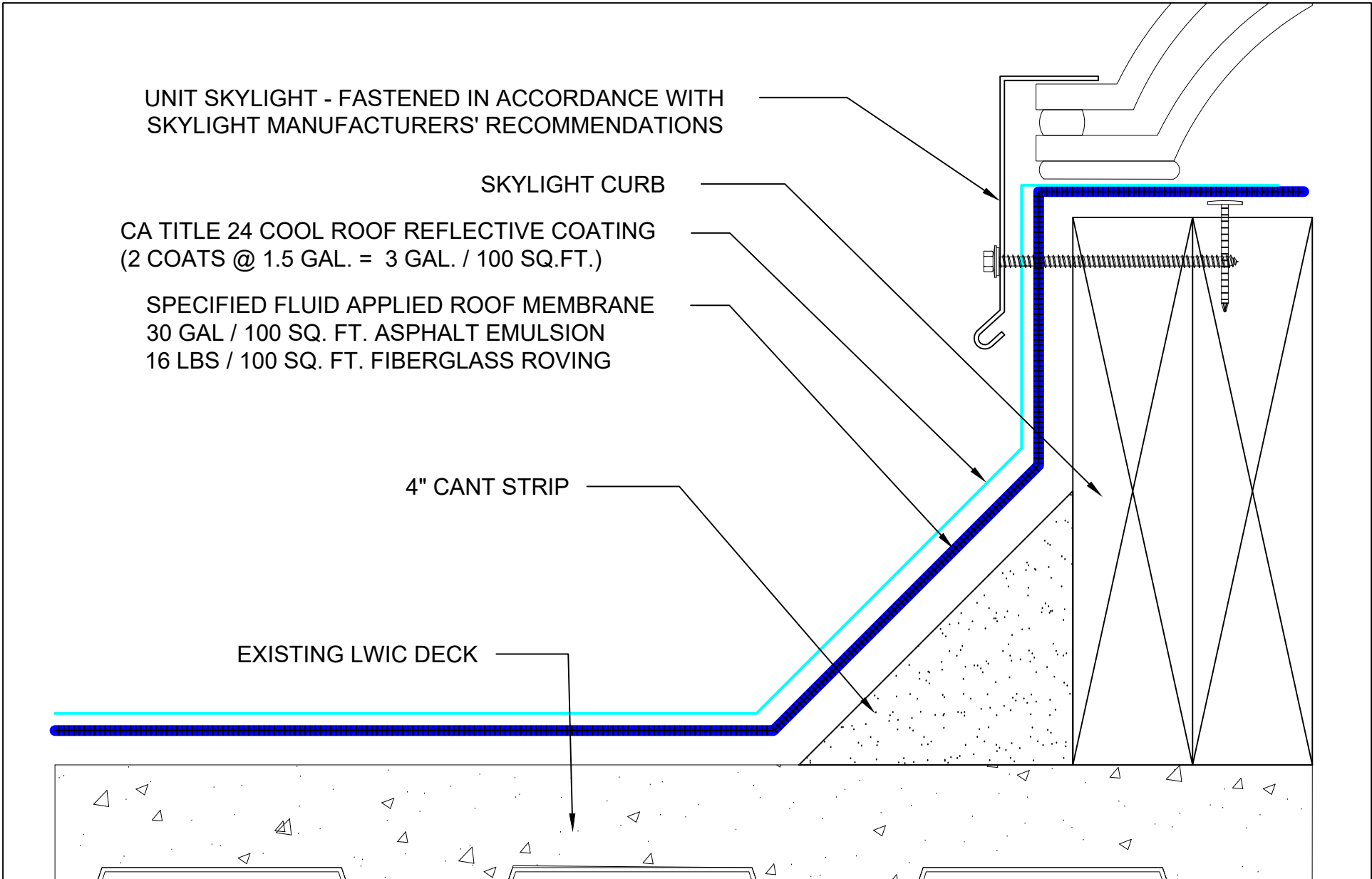
NCN-1B-16-30-A



9757 7th Street, Suite 803
Rancho Cucamonga, CA 91730-5297
(888) 440-3224 | www.weatherweld.com

PROJECT:		CONTRACTOR:	
DRAWN BY: RW	APPROVED BY: MJ		
DETAIL NUMBER: 402	INSTALLED BY: TBD	DATE: 3/26/25	SCALE: 6" = 1'-0"

DRAWING TITLE:
EQUIPMENT CURB FLASHING



Roof System:

NCN-1B-16-30-A

WEATHERWELD
ROOFING MADE SIMPLE
A DIVISION OF LIQUIFORM TECHNOLOGIES, INC.

9757 7th Street, Suite 803
Rancho Cucamonga, CA 91730-5297
(888) 440-3224 | www.weatherweld.com

PROJECT:

DRAWN BY: RW
CONTRACTOR:

DRAWING TITLE:
CURB MOUNTED SKYLIGHT FLASHING

DETAIL NUMBER:
403

APPROVED BY: MJ
INSTALLED BY: TBD
DATE: 3/26/25
SCALE: 6" = 1'-0"

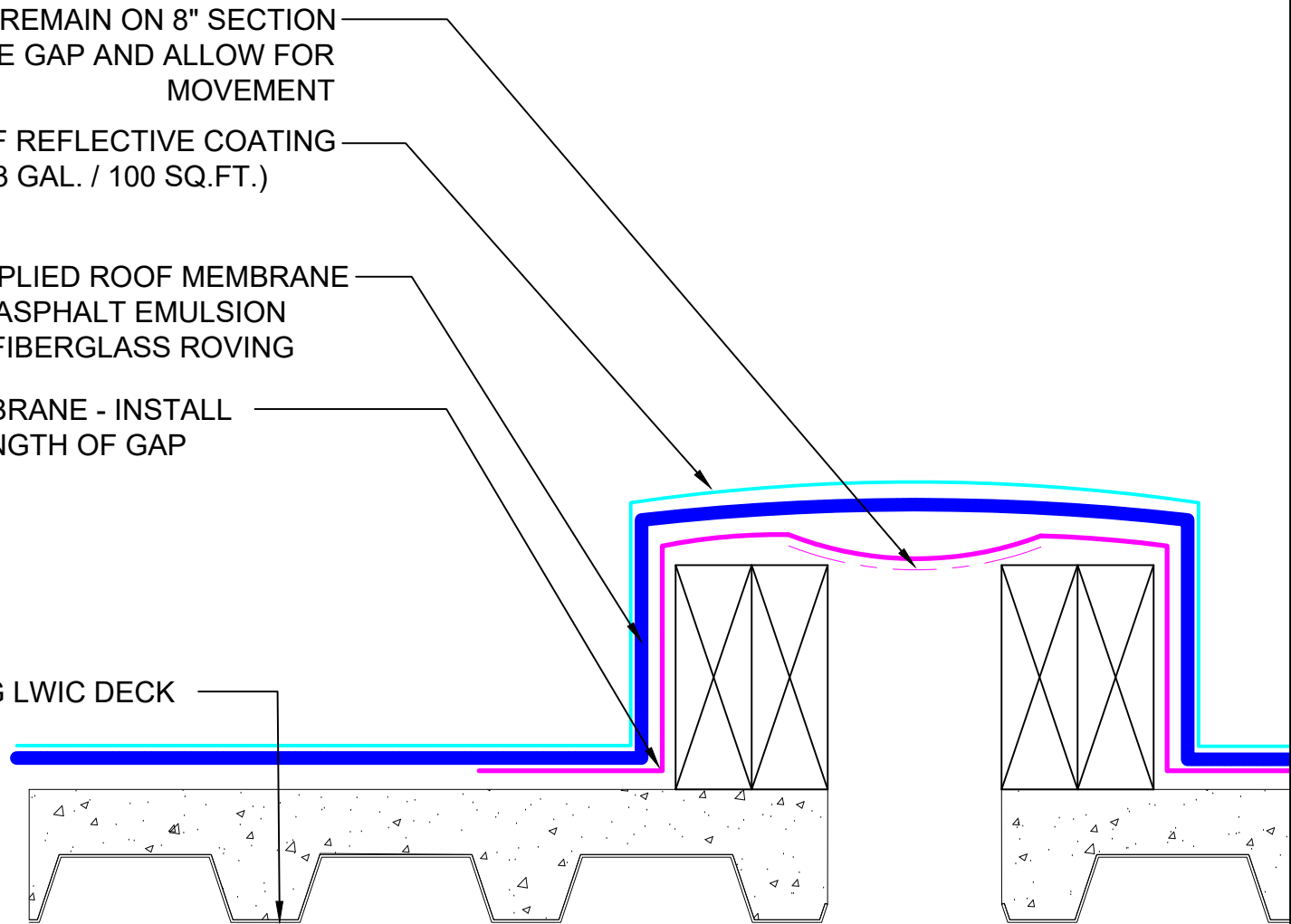
BACKING STRIP TO REMAIN ON 8" SECTION
TO STRADDLE GAP AND ALLOW FOR
MOVEMENT

CA TITLE 24 COOL ROOF REFLECTIVE COATING
(2 COATS @ 1.5 GAL. = 3 GAL. / 100 SQ.FT.)

SPECIFIED FLUID APPLIED ROOF MEMBRANE
30 GAL / 100 SQ. FT. ASPHALT EMULSION
16 LBS / 100 SQ. FT. FIBERGLASS ROVING

SELF ADHERING MEMBRANE - INSTALL
CONTINUOUS FOR LENGTH OF GAP

EXISTING LWIC DECK



Roof System:

NCN-1B-16-30-A



9757 7th Street, Suite 803
Rancho Cucamonga, CA 91730-5297
(888) 440-3224 | www.weatherweld.com

PROJECT:

DRAWING TITLE:

MODULAR CLASSROOM JOIN DETAIL

DETAIL NUMBER:

404

DRAWN BY:

RW

CONTRACTOR:

APPROVED BY:

MJ

INSTALLED BY:

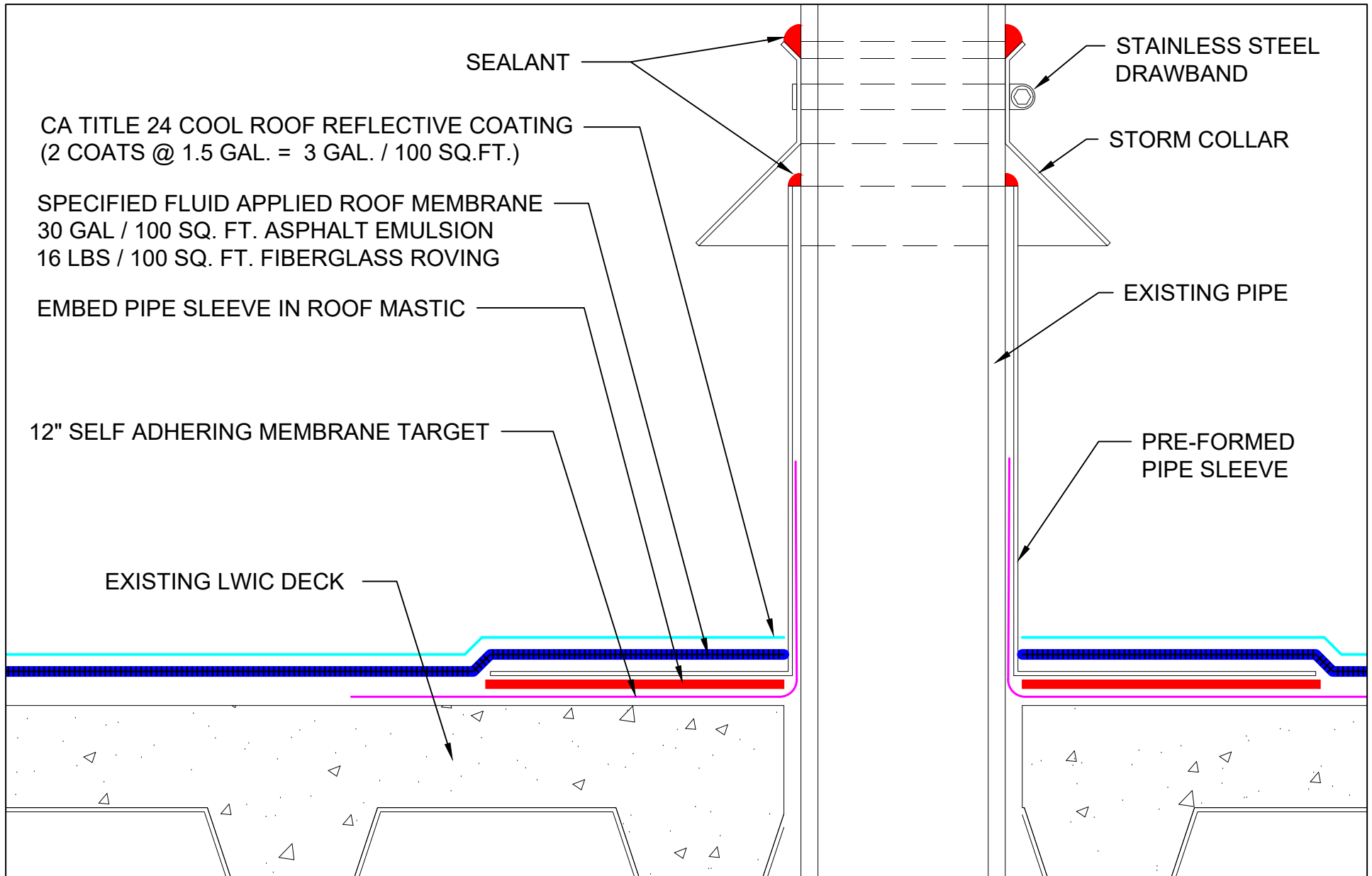
TBD

DATE:

3/26/25

SCALE:

3" = 1'-0"



Roof System:

NCN-1B-16-30-A

WEATHERWELD
ROOFING MADE SIMPLE
A DIVISION OF LIQUIFORM TECHNOLOGIES, INC.

9757 7th Street, Suite 803
Rancho Cucamonga, CA 91730-5297
(888) 440-3224 | www.weatherweld.com

DRAWING TITLE: **PIPE PENETRATION FLASHING**

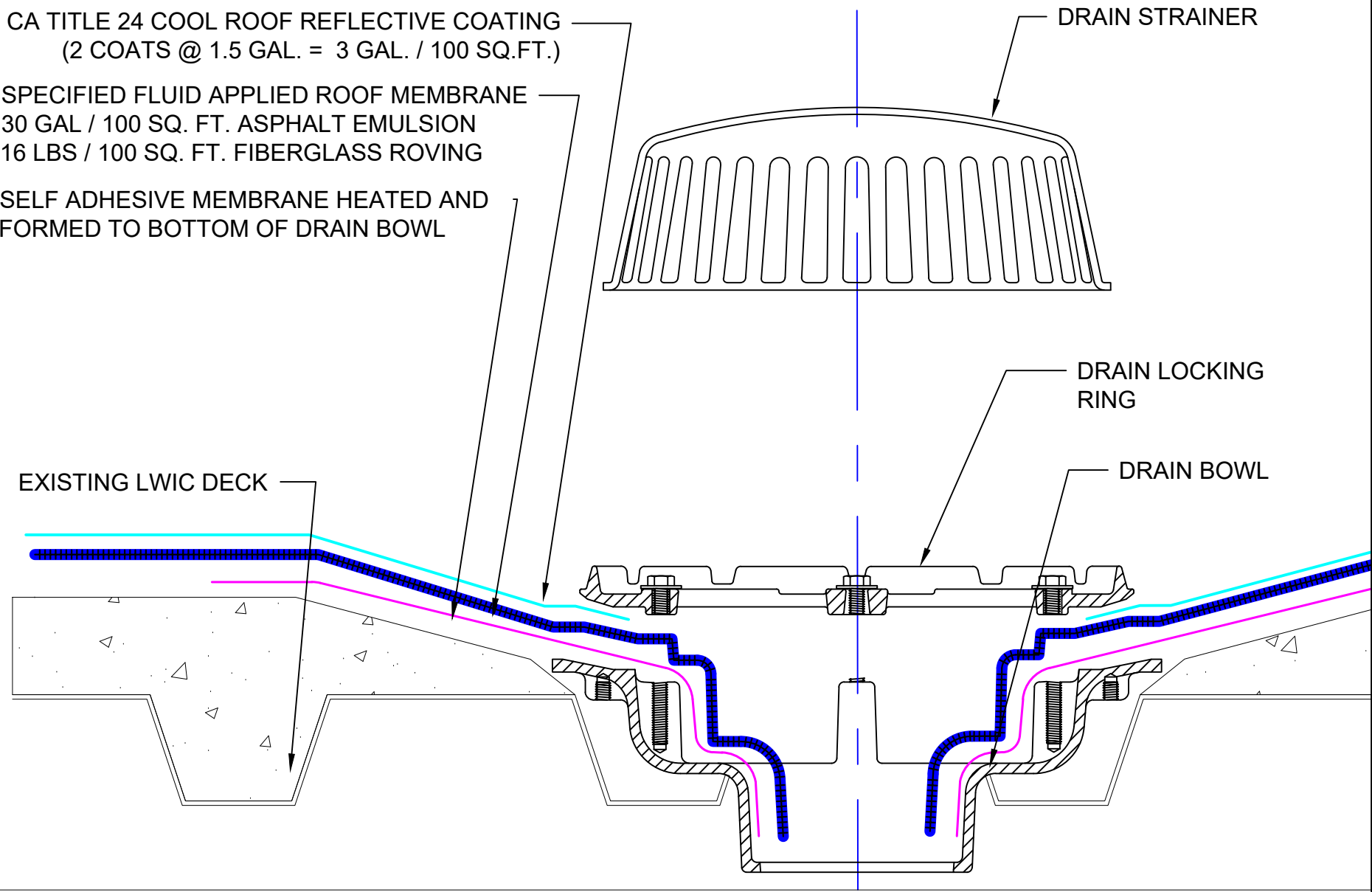
DETAIL NUMBER: **501**


PROJECT:			
DRAWN BY: RW	CONTRACTOR:		
APPROVED BY: MJ	INSTALLED BY: TBD	DATE: 3/26/25	SCALE: 6" = 1'-0"

CA TITLE 24 COOL ROOF REFLECTIVE COATING
(2 COATS @ 1.5 GAL. = 3 GAL. / 100 SQ.FT.)

SPECIFIED FLUID APPLIED ROOF MEMBRANE
30 GAL / 100 SQ. FT. ASPHALT EMULSION
16 LBS / 100 SQ. FT. FIBERGLASS ROVING

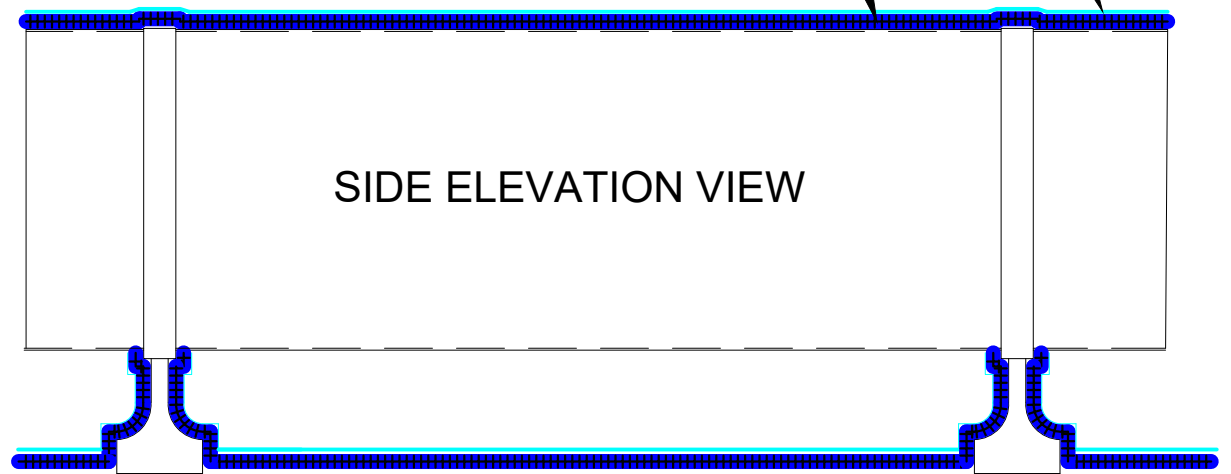
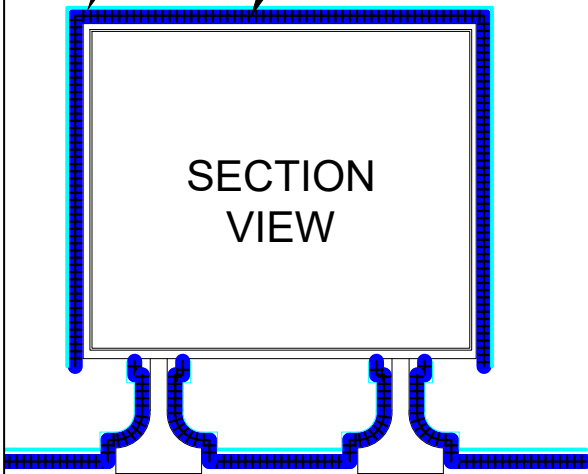
SELF ADHESIVE MEMBRANE HEATED AND
FORMED TO BOTTOM OF DRAIN BOWL



Roof System: NCN-1B-16-30-A	 WEATHERWELD ROOFING MADE SIMPLE <small>A DIVISION OF LIQUIFORM TECHNOLOGIES, INC.</small> 9757 7 th Street, Suite 803 Rancho Cucamonga, CA 91730-5297 (888) 440-3224 www.weatherweld.com	PROJECT:
	DRAWING TITLE: DRAIN DETAIL	DETAIL NUMBER: 502 DRAWN BY: RW APPROVED BY: MJ CONTRACTOR: INSTALLED BY: TBD DATE: 3/26/25 SCALE: 6" = 1'-0"

CA TITLE 24 COOL ROOF REFLECTIVE COATING
(2 COATS @ 1.5 GAL. = 3 GAL. / 100 SQ.FT.)

FLUID APPLIED DUCT ENCAPSULATION
30 GAL / 100 SQ. FT. ASPHALT EMULSION
16 LBS / 100 SQ. FT. FIBERGLASS ROVING



Roof System:
NCN-1B-16-30-A



9757 7th Street, Suite 803
Rancho Cucamonga, CA 91730-5297
(888) 440-3224 | www.weatherweld.com

PROJECT:
DRAWN BY: RW
CONTRACTOR:

DRAWING TITLE:
ROOFTOP DUCT ENCAPSULATION

DETAIL NUMBER:
503

APPROVED BY: MJ
INSTALLED BY: TBD
DATE: 3/26/25
SCALE: 1/253/256" = 1'-0"

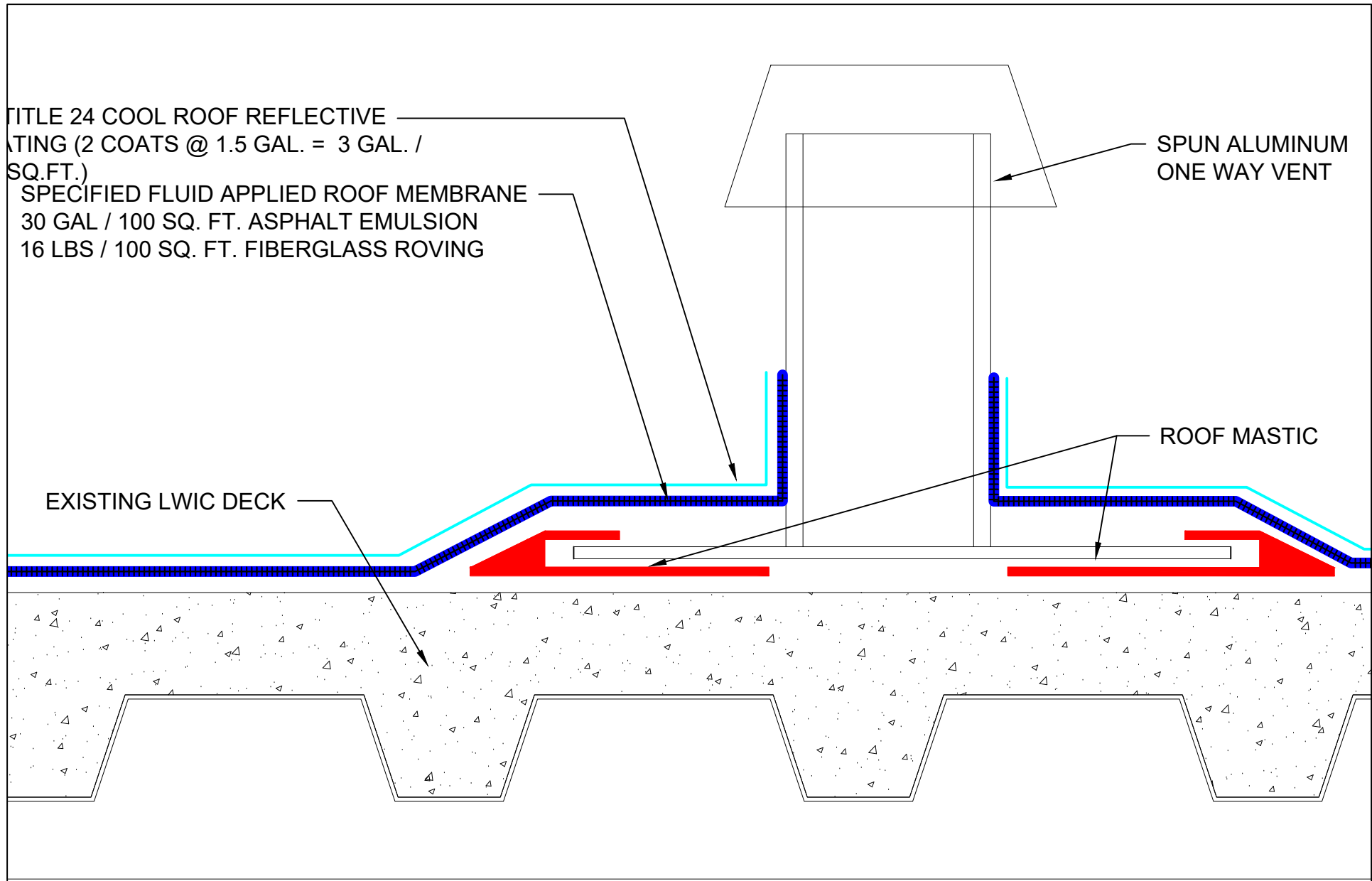
TITLE 24 COOL ROOF REFLECTIVE
 PAINTING (2 COATS @ 1.5 GAL. = 3 GAL. /
 SQ.FT.)

SPECIFIED FLUID APPLIED ROOF MEMBRANE
 30 GAL / 100 SQ. FT. ASPHALT EMULSION
 16 LBS / 100 SQ. FT. FIBERGLASS ROVING

SPUN ALUMINUM
 ONE WAY VENT

ROOF MASTIC

EXISTING LWIC DECK



Roof System: NCN-1B-16-30-A	 WEATHERWELD ROOFING MADE SIMPLE <small>A DIVISION OF LIQUIFORM TECHNOLOGIES, INC.</small>	9757 7 th Street, Suite 803 Rancho Cucamonga, CA 91730-5297 (888) 440-3224 www.weatherweld.com		PROJECT:			
		DRAWING TITLE: ONE WAY VENT	DETAIL NUMBER: 505	DRAWN BY: RW	CONTRACTOR:		
		APPROVED BY: MJ	INSTALLED BY: TBD	DATE: 3/26/25	SCALE: 6" = 1'-0"		