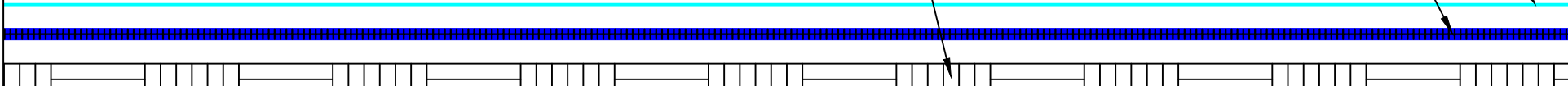



CA TITLE 24 COOL ROOF REFLECTIVE COATING
(2 COATS @ 1.5 GAL. = 3 GAL. / 100 SQ.FT.)

SPECIFIED FLUID APPLIED ROOF MEMBRANE
30 GAL / 100 SQ. FT. ASPHALT EMULSION
16 LBS / 100 SQ. FT. FIBERGLASS ROVING

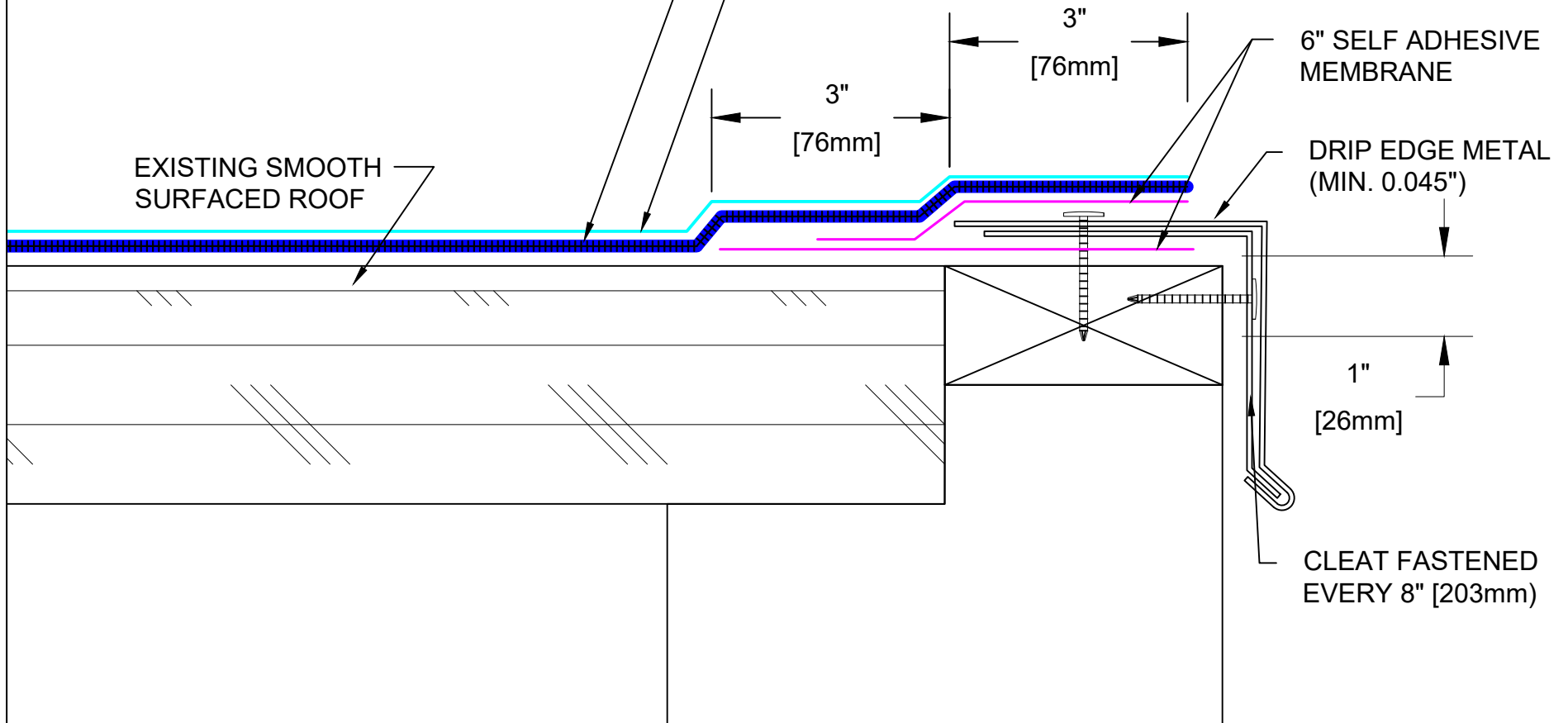
EXISTING SMOOTH SURFACED ROOF



Roof System: R-16-30-A	 9757 7 th Street, Suite 803 Rancho Cucamonga, CA 91730-5297 (888) 440-3224 www.weatherweld.com	PROJECT:			
		DRAWING TITLE: SYSTEM OVERVIEW	DETAIL NUMBER: 101	DRAWN BY: RW	CONTRACTOR:
		APPROVED BY: MJ	INSTALLED BY:	DATE: 3/26/25	SCALE: NTS

SPECIFIED FLUID APPLIED ROOF MEMBRANE
 30 GAL / 100 SQ. FT. ASPHALT EMULSION
 16 LBS / 100 SQ. FT. FIBERGLASS ROVING

CA TITLE 24 COOL ROOF REFLECTIVE COATING
 (2 COATS @ 1.5 GAL. = 3 GAL. / 100 SQ.FT.)



Roof System:
R-16-30-A

WEATHERWELD
 ROOFING MADE SIMPLE
 A DIVISION OF LIQUIFORM TECHNOLOGIES, INC.

9757 7th Street, Suite 803
 Rancho Cucamonga, CA 91730-5297
 (888) 440-3224 | www.weatherweld.com

DRAWING TITLE: **EDGE FLASHING**

DETAIL NUMBER: **201**

PROJECT:

DRAWN BY: **RW**

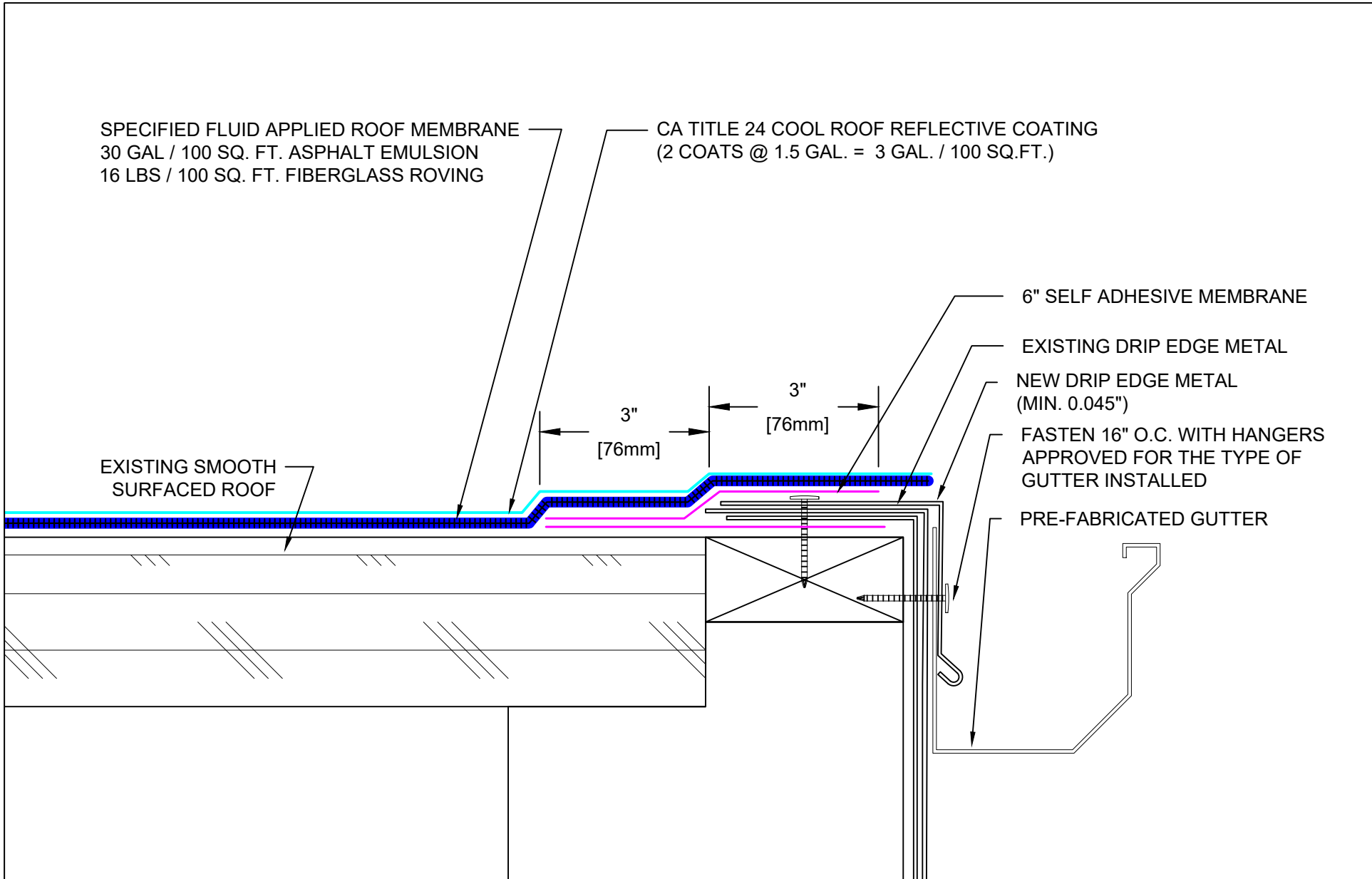
CONTRACTOR:

APPROVED BY: **MJ**

INSTALLED BY: **TBD**

DATE: **3/26/25**

SCALE: **6" = 1'-0"**



SPECIFIED FLUID APPLIED ROOF MEMBRANE
 30 GAL / 100 SQ. FT. ASPHALT EMULSION
 16 LBS / 100 SQ. FT. FIBERGLASS ROVING

CA TITLE 24 COOL ROOF REFLECTIVE COATING
 (2 COATS @ 1.5 GAL. = 3 GAL. / 100 SQ.FT.)

EXISTING SMOOTH SURFACED ROOF

3" [76mm]

3" [76mm]

6" SELF ADHESIVE MEMBRANE

EXISTING DRIP EDGE METAL

NEW DRIP EDGE METAL (MIN. 0.045")

FASTEN 16" O.C. WITH HANGERS APPROVED FOR THE TYPE OF GUTTER INSTALLED

PRE-FABRICATED GUTTER

Roof System:

R-16-30-A

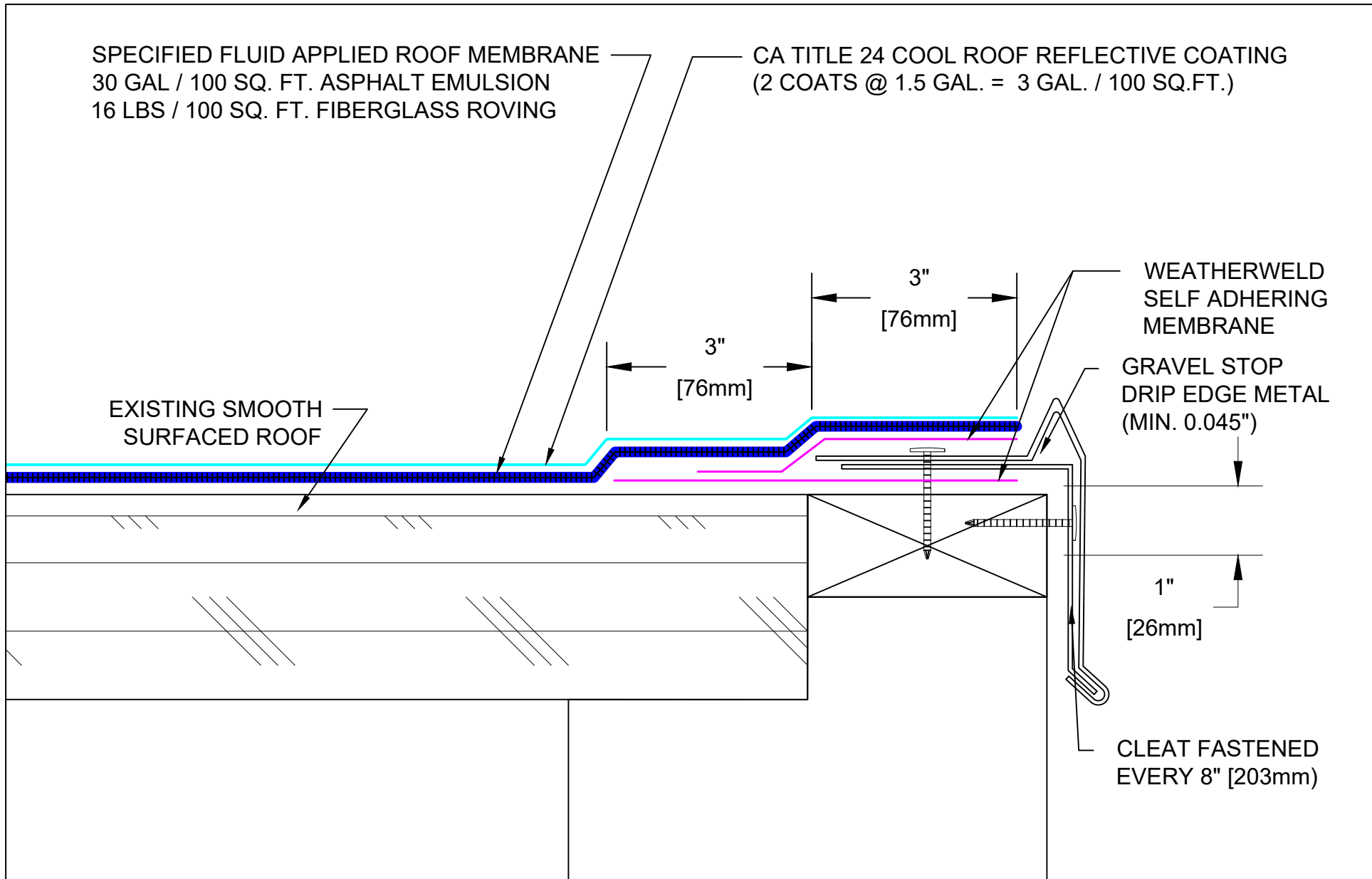
WEATHERWELD
 ROOFING MADE SIMPLE
 A DIVISION OF LIQUIFORM TECHNOLOGIES, INC.
 9757 7th Street, Suite 803
 Rancho Cucamonga, CA 91730-5297
 (888) 440-3224 | www.weatherweld.com

DRAWING TITLE:
GUTTER EDGE FLASHING - RETROFIT

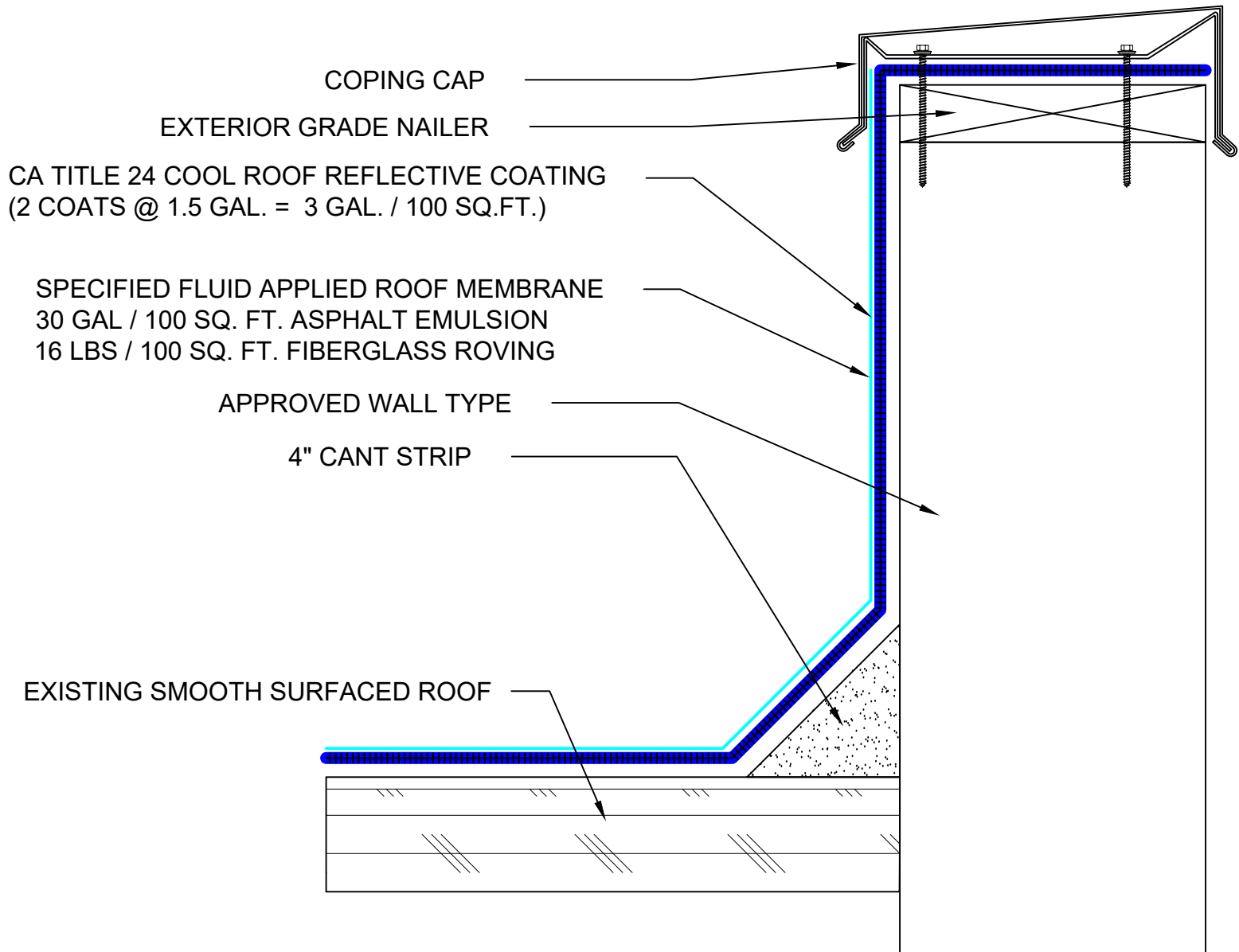
DETAIL NUMBER:
205

PROJECT:

DRAWN BY: RW	CONTRACTOR:		
APPROVED BY: MJ	INSTALLED BY: TBD	DATE: 3/26/25	SCALE: NTS



<p>Roof System:</p> <p>R-16-30-A</p>	<p>WEATHERWELD ROOFING MADE SIMPLE A DIVISION OF LIQUIFORM TECHNOLOGIES, INC.</p> <p>9757 7th Street, Suite 803 Rancho Cucamonga, CA 91730-5297 (888) 440-3224 www.weatherweld.com</p>	<p>PROJECT:</p>			
<p>DRAWING TITLE: EDGE TERMINATION W/ GRAVEL STOP</p>	<p>DETAIL NUMBER: 207</p>	<p>DRAWN BY: RW</p>	<p>CONTRACTOR:</p>		
		<p>APPROVED BY: MJ</p>	<p>INSTALLED BY: TBD</p>	<p>DATE: 3/26/25</p>	<p>SCALE: NTS</p>



Roof System:

R-16-30-A



9757 7th Street, Suite 803
Rancho Cucamonga, CA 91730-5297
(888) 440-3224 | www.weatherweld.com

PROJECT:

DRAWING TITLE:

COPING CAP FLASHING

DETAIL NUMBER:

301

DRAWN BY:

RW

CONTRACTOR:

APPROVED BY:

MJ

INSTALLED BY:

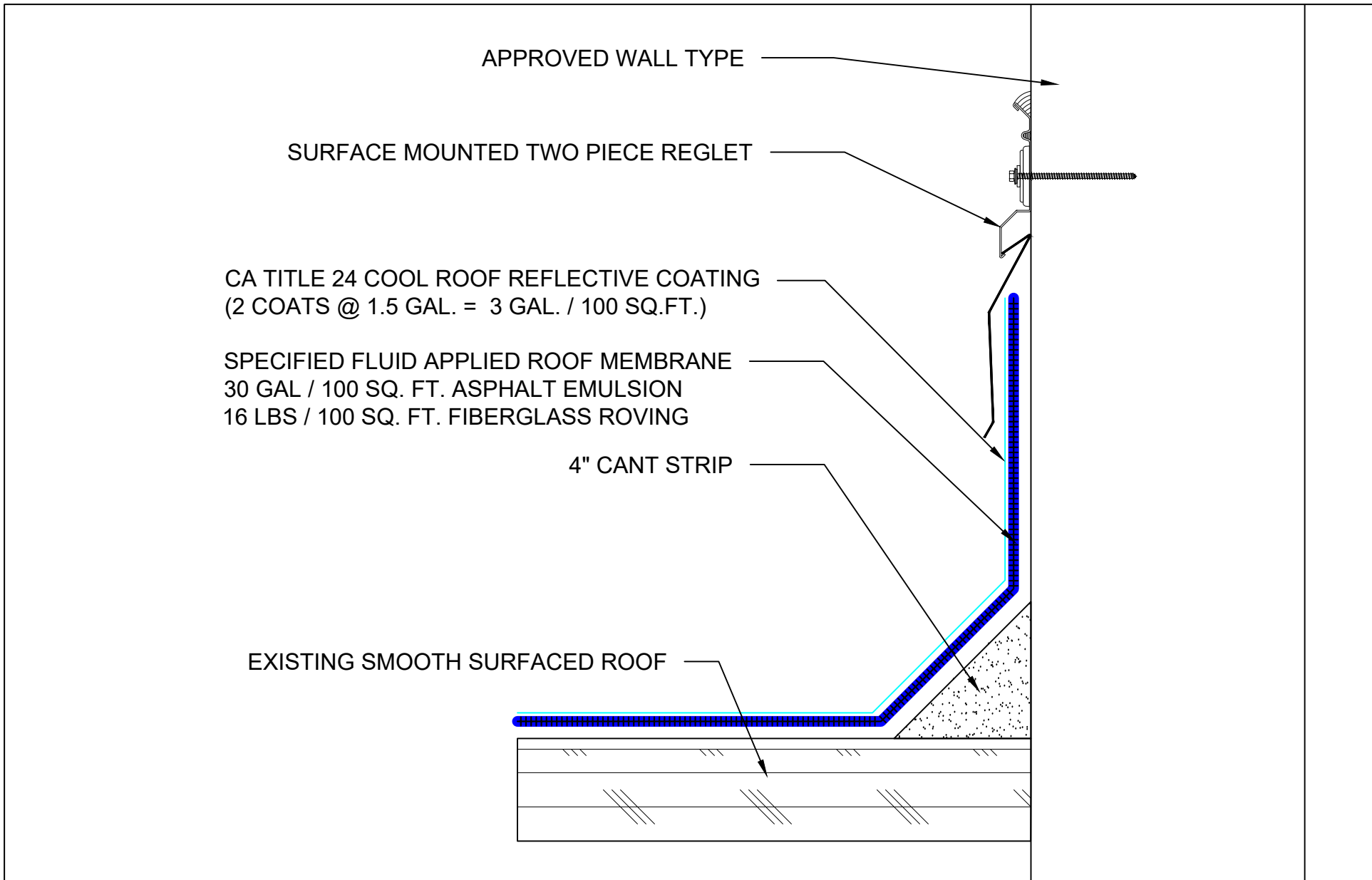
TBD

DATE:

3/26/25

SCALE:

3" = 1'-0"



Roof System:

R-16-30-A

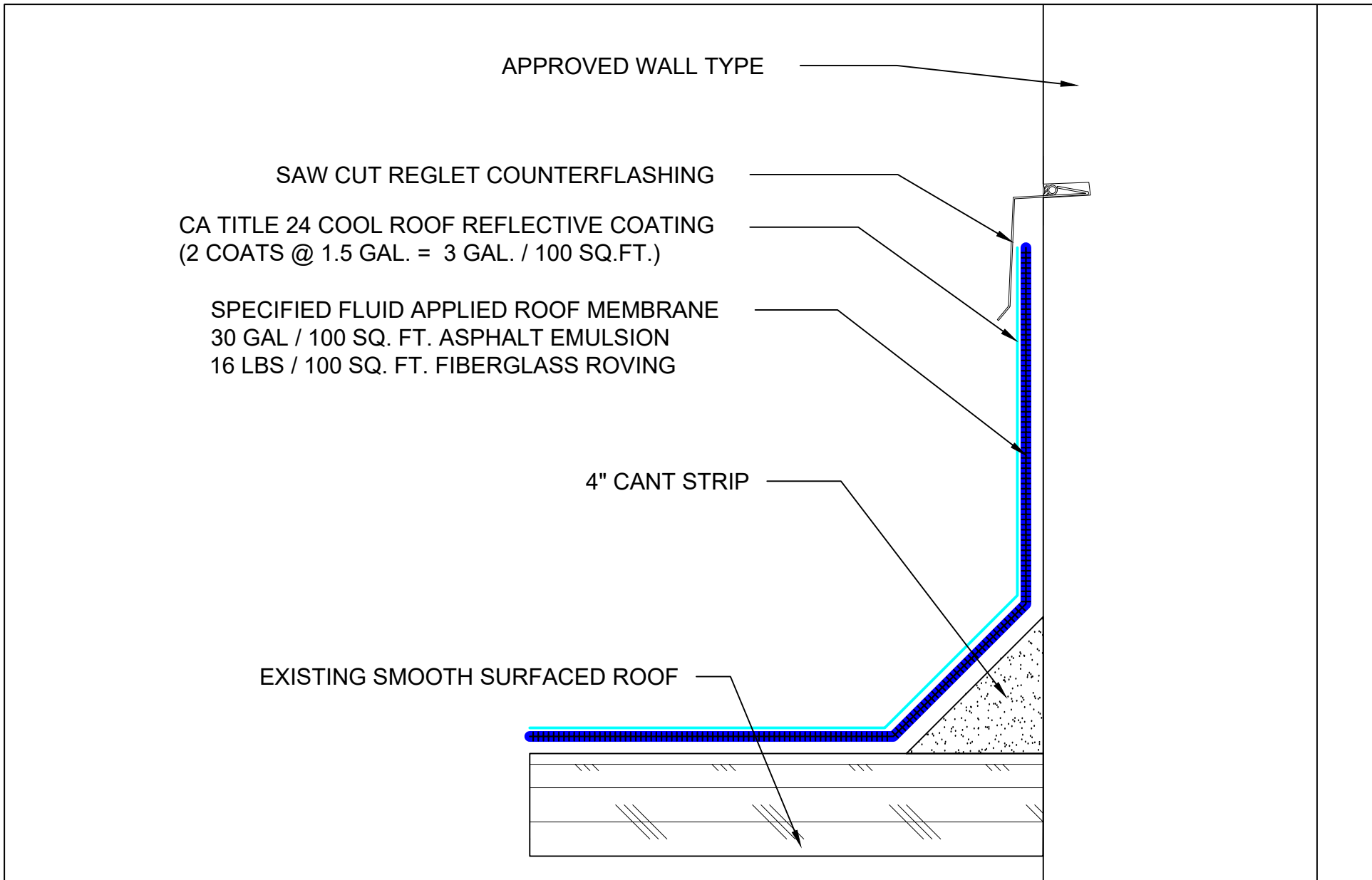
WEATHERWELD
 ROOFING MADE SIMPLE
 A DIVISION OF LIQUIFORM TECHNOLOGIES, INC.

9757 7th Street, Suite 803
 Rancho Cucamonga, CA 91730-5297
 (888) 440-3224 | www.weatherweld.com

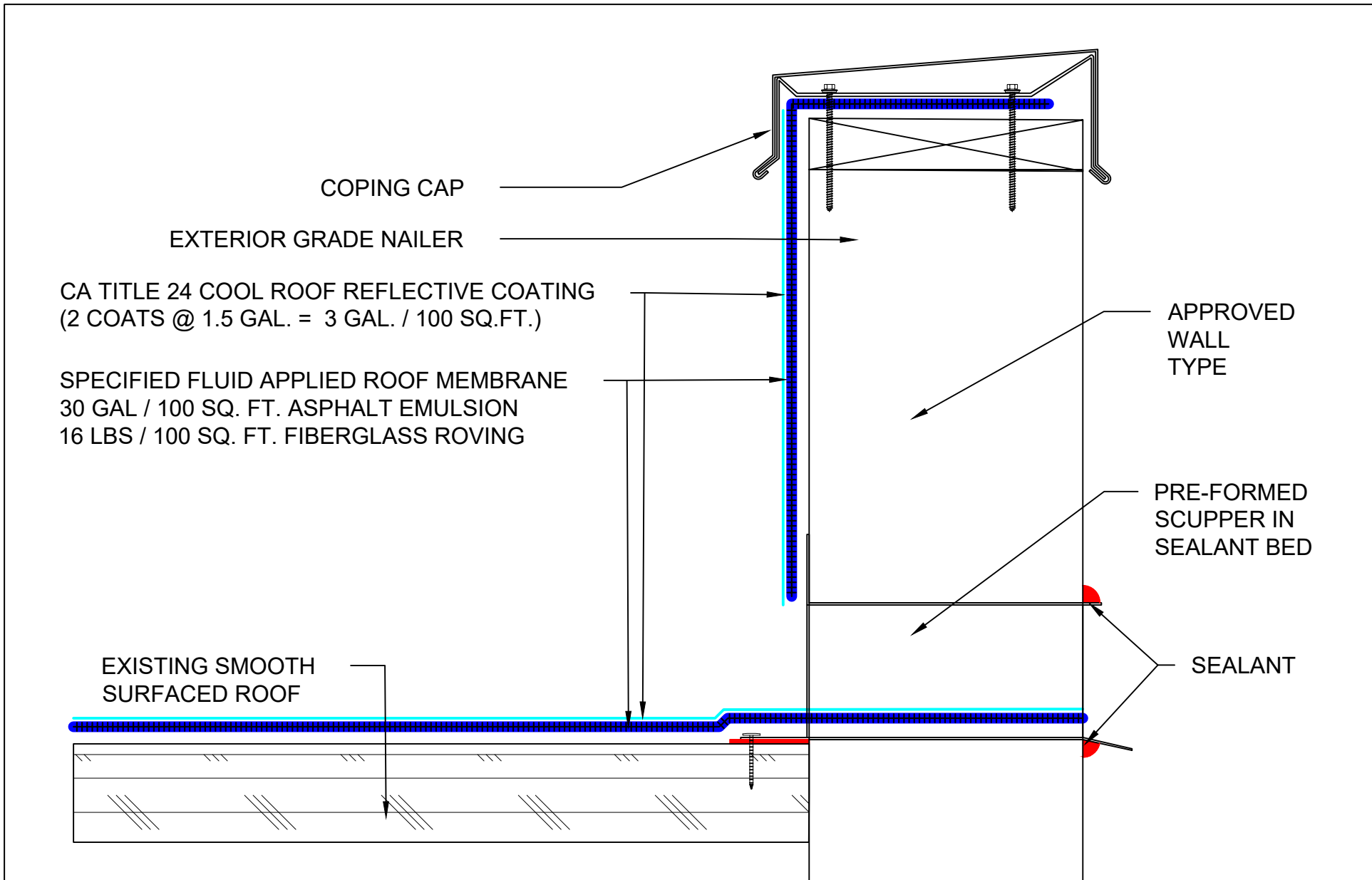
DRAWING TITLE: **SURFACE MOUNTED REGLET**

DETAIL NUMBER: **302**

PROJECT:			
DRAWN BY: RW	CONTRACTOR:		
APPROVED BY: MJ	INSTALLED BY: TBD	DATE: 3/26/25	SCALE: 3" = 1'-0"



<p>Roof System:</p> <p>R-16-30-A</p>	<p>WEATHERWELD <small>ROOFING MADE SIMPLE</small> <small>A DIVISION OF LIQUIFORM TECHNOLOGIES, INC.</small></p> <p>9757 7th Street, Suite 803 Rancho Cucamonga, CA 91730-5297 (888) 440-3224 www.weatherweld.com</p>	<p>PROJECT:</p>			
<p>DRAWING TITLE:</p> <p>SAW CUT REGLET</p>	<p>DETAIL NUMBER:</p> <p>303</p>	<p>DRAWN BY:</p> <p>RW</p>	<p>CONTRACTOR:</p>		
		<p>APPROVED BY:</p> <p>MJ</p>	<p>INSTALLED BY:</p> <p>TBD</p>	<p>DATE:</p> <p>3/26/25</p>	<p>SCALE:</p> <p>3" = 1'-0"</p>



Roof System:

R-16-30-A

WEATHERWELD
 ROOFING MADE SIMPLE
 A DIVISION OF LIQUIFORM TECHNOLOGIES, INC.

9757 7th Street, Suite 803
 Rancho Cucamonga, CA 91730-5297
 (888) 440-3224 | www.weatherweld.com

DRAWING TITLE: **THRU WALL SCUPPER FLASHING**

DETAIL NUMBER: **306**

PROJECT:

DRAWN BY: **RW**

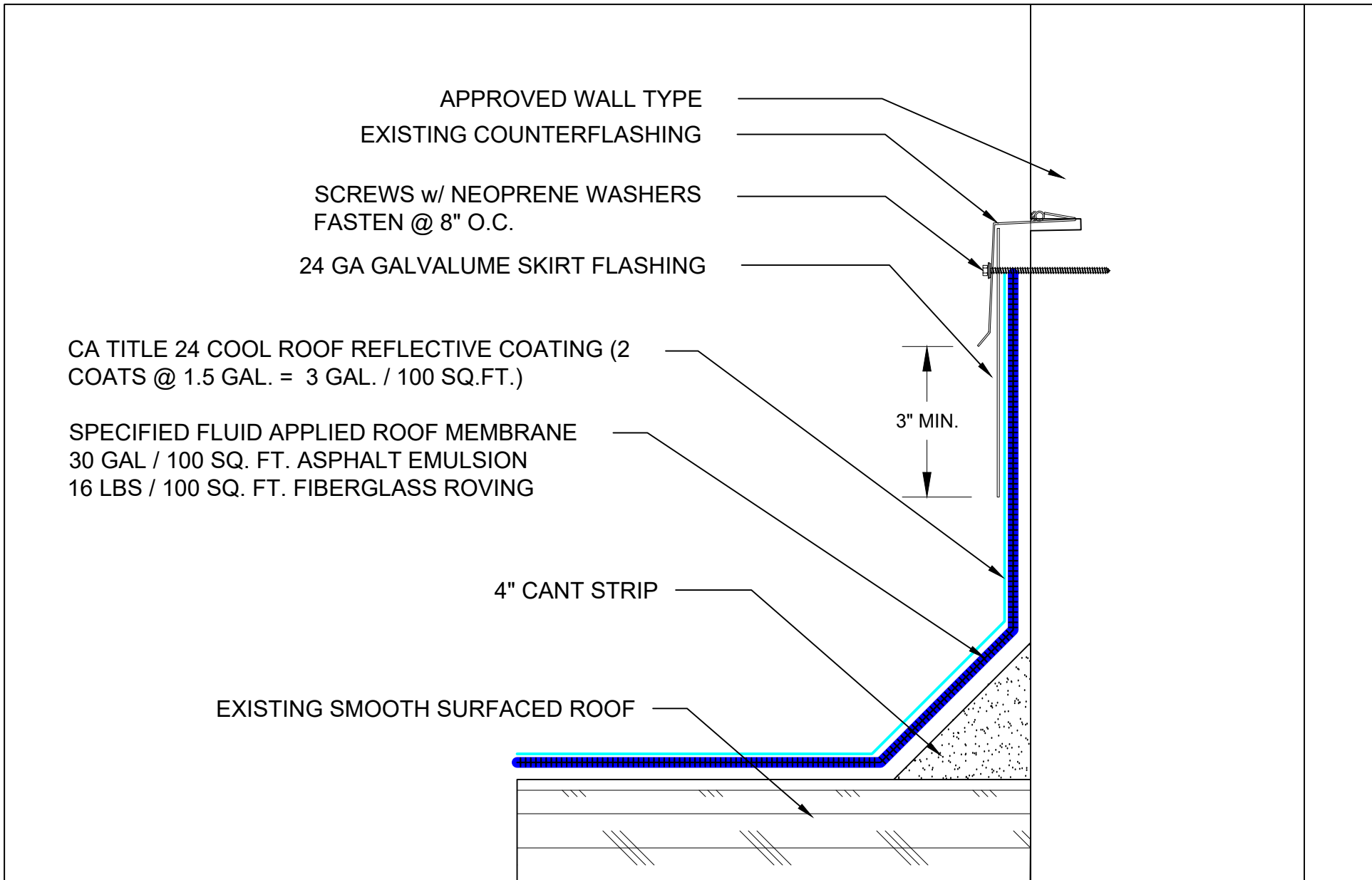
CONTRACTOR:

APPROVED BY: **MJ**

INSTALLED BY: **TBD**

DATE: **3/26/25**

SCALE: **3" = 1'-0"**



Roof System:

R-16-30-A

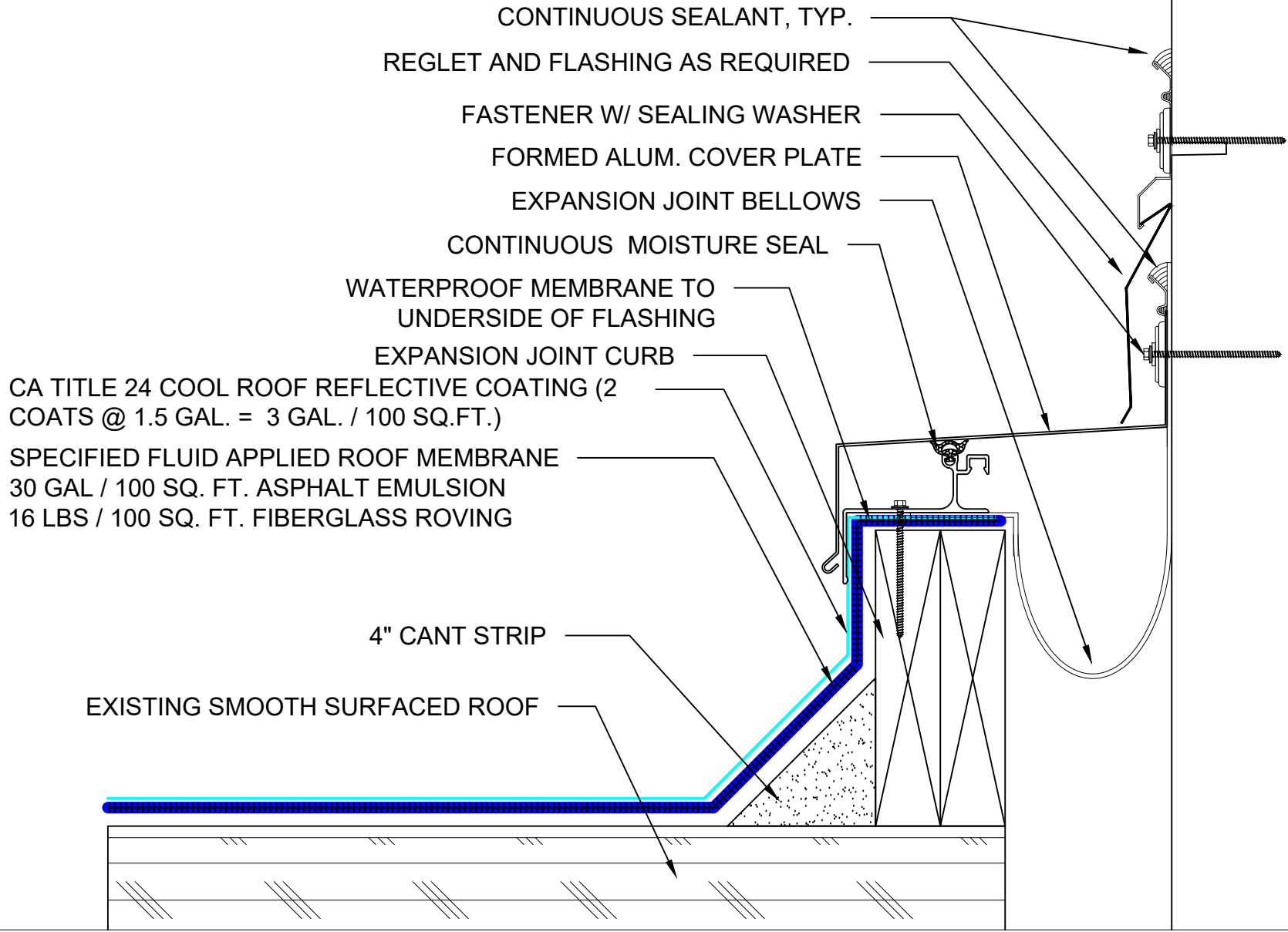
WEATHERWELD
 ROOFING MADE SIMPLE
 A DIVISION OF LIQUIFORM TECHNOLOGIES, INC.

9757 7th Street, Suite 803
 Rancho Cucamonga, CA 91730-5297
 (888) 440-3224 | www.weatherweld.com

DRAWING TITLE: **SKIRTED COUNTERFLASHING**

DETAIL NUMBER: **307**

PROJECT:			
DRAWN BY: RW	CONTRACTOR:		
APPROVED BY: MJ	INSTALLED BY: TBD	DATE: 3/26/25	SCALE: 3" = 1'-0"



CA TITLE 24 COOL ROOF REFLECTIVE COATING (2 COATS @ 1.5 GAL. = 3 GAL. / 100 SQ.FT.)

SPECIFIED FLUID APPLIED ROOF MEMBRANE
 30 GAL / 100 SQ. FT. ASPHALT EMULSION
 16 LBS / 100 SQ. FT. FIBERGLASS ROVING

Roof System:

R-16-30-A



9757 7th Street, Suite 803
 Rancho Cucamonga, CA 91730-5297
 (888) 440-3224 | www.weatherweld.com

DRAWING TITLE:
ROOF TO WALL EXPANSION JOINT

DETAIL NUMBER:
308

PROJECT:			
DRAWN BY: RW	CONTRACTOR:		
APPROVED BY: MJ	INSTALLED BY: TBD	DATE: 3/26/25	SCALE: 3" = 1'-0"

COPING CAP
 SCREWS w/ NEOPRENE WASHERS - FASTEN @ 8" O.C.

24 GA GALVALUME SKIRT FLASHING

CA TITLE 24 COOL ROOF REFLECTIVE COATING
 (2 COATS @ 1.5 GAL. = 3 GAL. / 100 SQ.FT.)

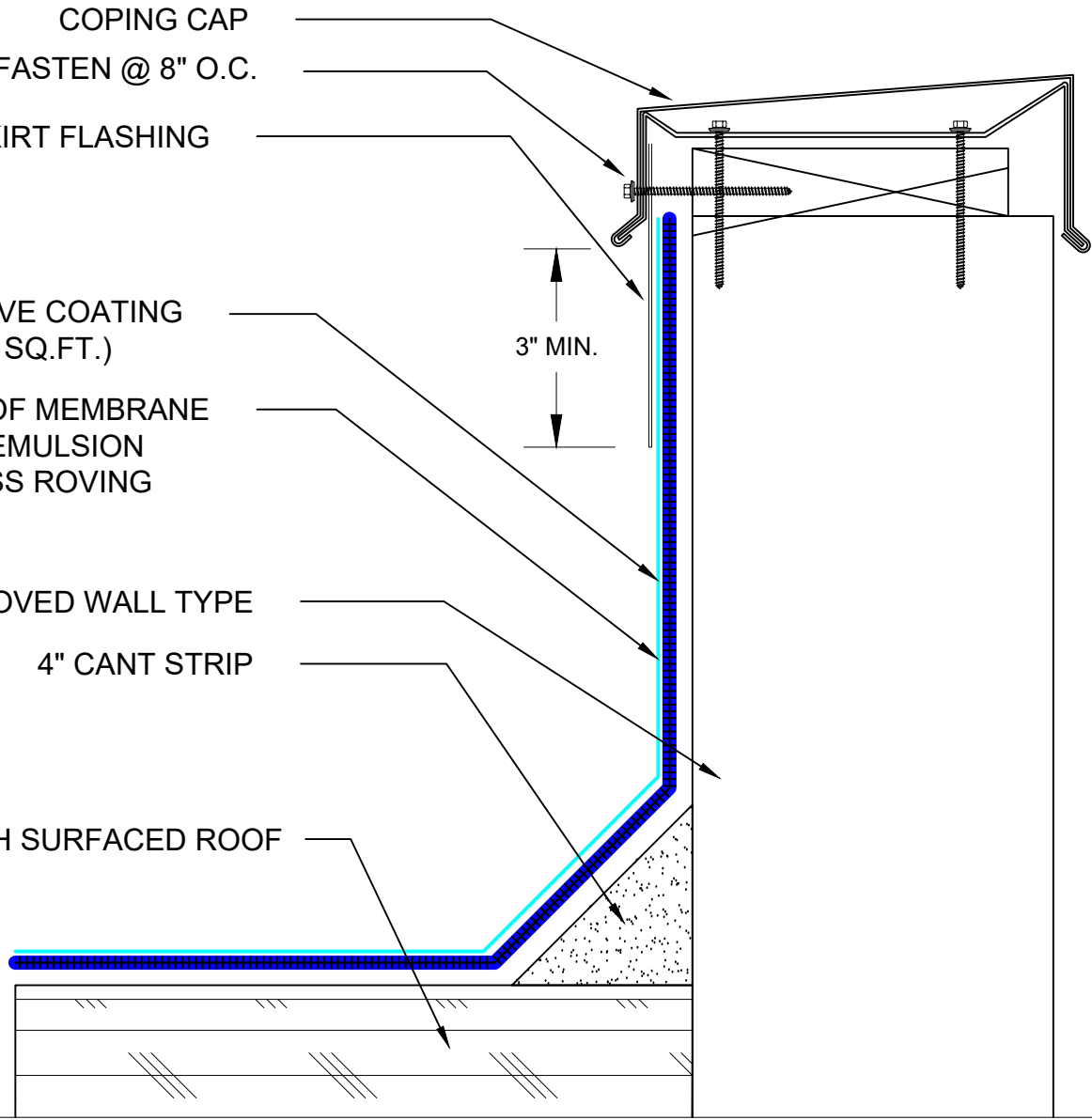
SPECIFIED FLUID APPLIED ROOF MEMBRANE
 30 GAL / 100 SQ. FT. ASPHALT EMULSION
 16 LBS / 100 SQ. FT. FIBERGLASS ROVING

APPROVED WALL TYPE

4" CANT STRIP

EXISTING SMOOTH SURFACED ROOF

3" MIN.



Roof System:

R-16-30-A



9757 7th Street, Suite 803
 Rancho Cucamonga, CA 91730-5297
 (888) 440-3224 | www.weatherweld.com

PROJECT:

DRAWING TITLE:

SKIRTED COPING CAP

DETAIL NUMBER:

309

DRAWN BY:

RW

CONTRACTOR:

APPROVED BY:

MJ

INSTALLED BY:

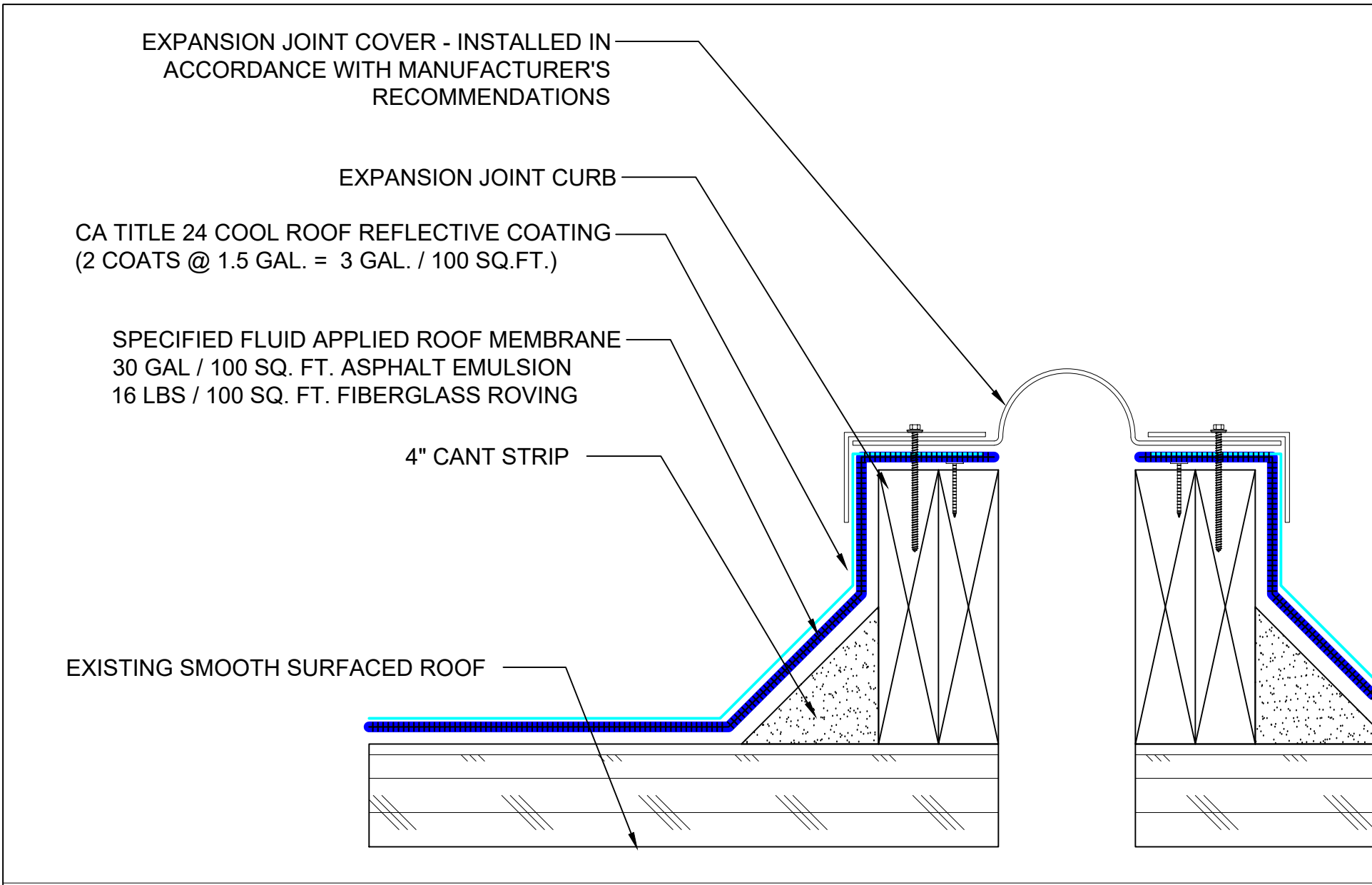
TBD


DATE:

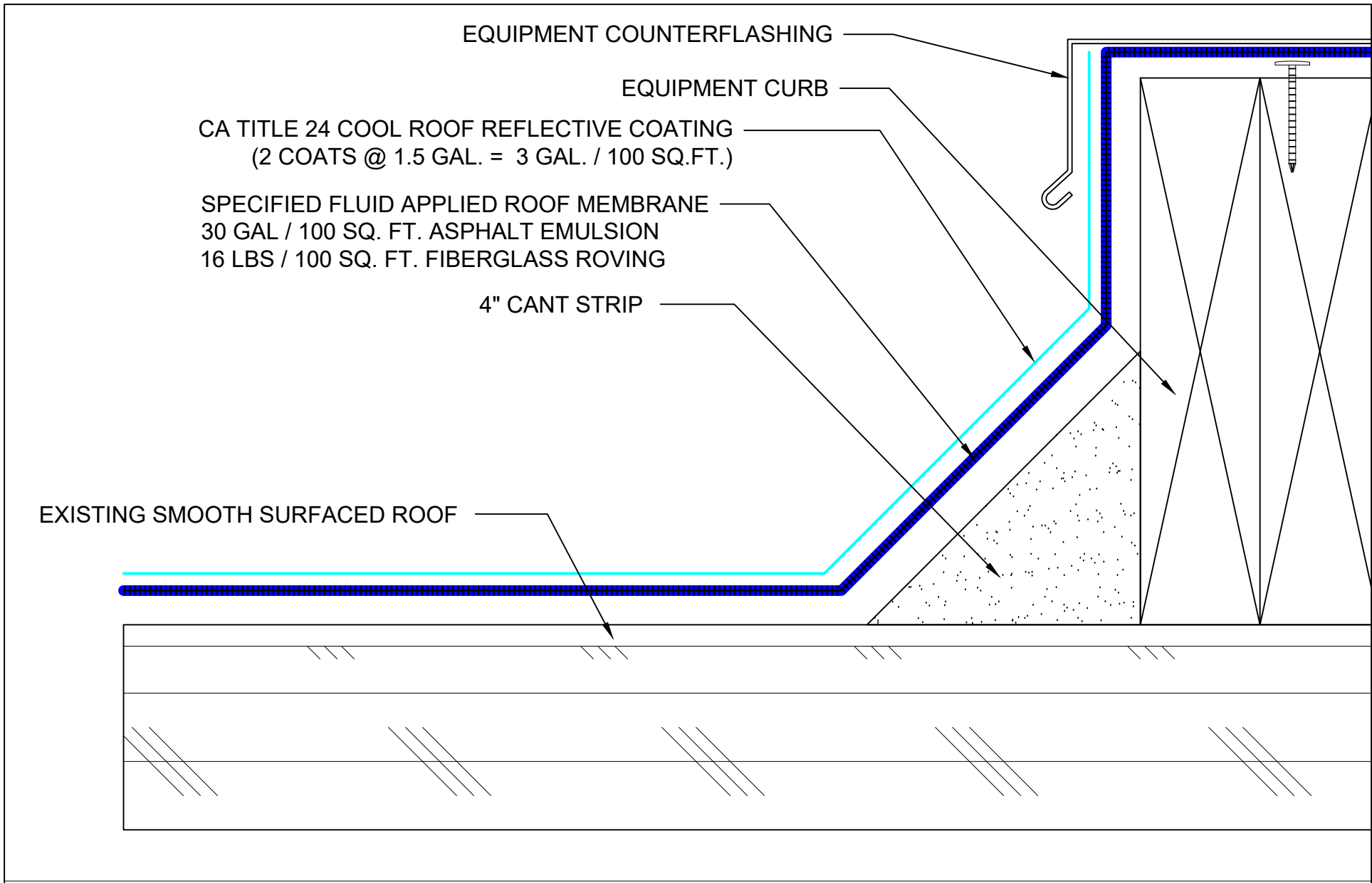
3/26/25

SCALE:

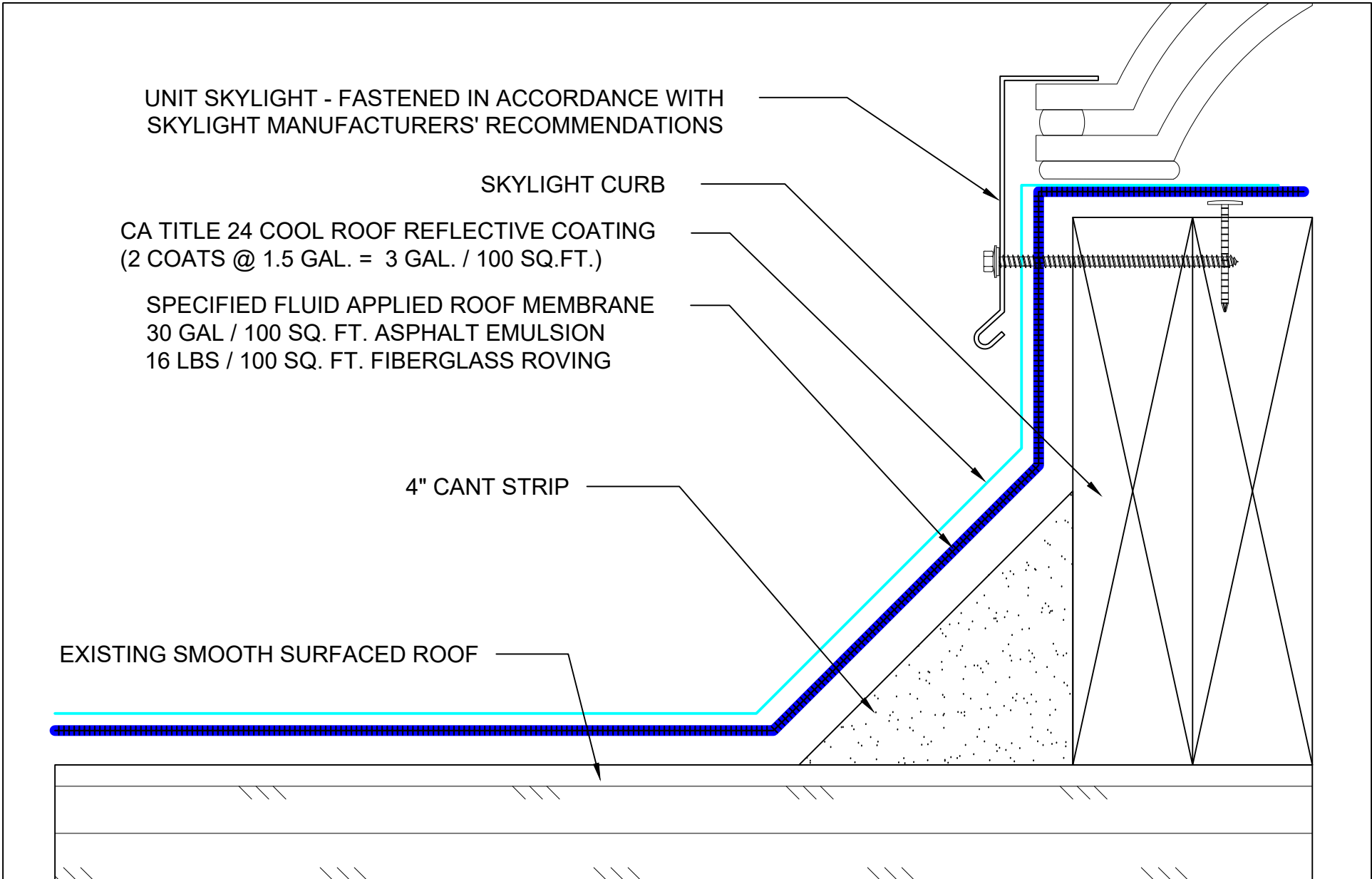
3" = 1'-0"



Roof System: <h1 style="text-align: center;">R-16-30-A</h1>	<div style="display: flex; justify-content: space-between; align-items: center;"> <div data-bbox="567 1333 945 1528">  <p>WEATHERWELD ROOFING MADE SIMPLE A DIVISION OF LIQUIFORM TECHNOLOGIES, INC.</p> </div> <div data-bbox="945 1333 1459 1528"> <p>9757 7th Street, Suite 803 Rancho Cucamonga, CA 91730-5297 (888) 440-3224 www.weatherweld.com</p> </div> </div> <p>DRAWING TITLE: EXPANSION JOINT</p>	PROJECT: <table border="1" style="width: 100%; border-collapse: collapse;"> <tr> <td style="width: 25%;">DRAWN BY: RW</td> <td colspan="3">CONTRACTOR:</td> </tr> <tr> <td>APPROVED BY: MJ</td> <td>INSTALLED BY: TBD</td> <td>DATE: 3/26/25</td> <td>SCALE: 3" = 1'-0"</td> </tr> </table>	DRAWN BY: RW	CONTRACTOR:			APPROVED BY: MJ	INSTALLED BY: TBD	DATE: 3/26/25	SCALE: 3" = 1'-0"
DRAWN BY: RW	CONTRACTOR:									
APPROVED BY: MJ	INSTALLED BY: TBD	DATE: 3/26/25	SCALE: 3" = 1'-0"							
DETAIL NUMBER: 401										



Roof System: <h1 style="text-align: center;">R-16-30-A</h1>	<div style="display: flex; justify-content: space-between; align-items: center;"> <div data-bbox="577 1347 840 1421"> <p>WEATHERWELD ROOFING MADE SIMPLE <small>A DIVISION OF LIQUIFORM TECHNOLOGIES, INC.</small></p> </div> <div data-bbox="966 1339 1344 1421"> <p>9757 7th Street, Suite 803 Rancho Cucamonga, CA 91730-5297 (888) 440-3224 www.weatherweld.com</p> </div> </div> <p>DRAWING TITLE: EQUIPMENT CURB FLASHING</p>	PROJECT: <table border="1" style="width: 100%; border-collapse: collapse;"> <tr> <td style="width: 25%;">DRAWN BY: RW</td> <td colspan="3">CONTRACTOR:</td> </tr> <tr> <td>APPROVED BY: MJ</td> <td>INSTALLED BY: TBD</td> <td>DATE: 3/26/25</td> <td>SCALE: 6" = 1'-0"</td> </tr> </table>	DRAWN BY: RW	CONTRACTOR:			APPROVED BY: MJ	INSTALLED BY: TBD	DATE: 3/26/25	SCALE: 6" = 1'-0"
DRAWN BY: RW	CONTRACTOR:									
APPROVED BY: MJ	INSTALLED BY: TBD	DATE: 3/26/25	SCALE: 6" = 1'-0"							
	DETAIL NUMBER: 402									



Roof System: <h1 style="text-align: center;">R-16-30-A</h1>	<div style="display: flex; justify-content: space-between; align-items: center;"> <div data-bbox="567 1333 945 1523">  <p>WEATHERWELD ROOFING MADE SIMPLE A DIVISION OF LIQUIFORM TECHNOLOGIES, INC.</p> </div> <div data-bbox="945 1333 1449 1523"> <p>9757 7th Street, Suite 803 Rancho Cucamonga, CA 91730-5297 (888) 440-3224 www.weatherweld.com</p> </div> </div> <p>DRAWING TITLE: CURB MOUNTED SKYLIGHT FLASHING</p> <p>DETAIL NUMBER: 403</p>	PROJECT: <table border="1" style="width: 100%; border-collapse: collapse;"> <tr> <td data-bbox="1449 1421 1585 1469">DRAWN BY: RW</td> <td colspan="3" data-bbox="1585 1421 2005 1469">CONTRACTOR:</td> </tr> <tr> <td data-bbox="1449 1469 1585 1523">APPROVED BY: MJ</td> <td data-bbox="1585 1469 1722 1523">INSTALLED BY: TBD</td> <td data-bbox="1722 1469 1858 1523">DATE: 3/26/25</td> <td data-bbox="1858 1469 2005 1523">SCALE: 6" = 1'-0"</td> </tr> </table>	DRAWN BY: RW	CONTRACTOR:			APPROVED BY: MJ	INSTALLED BY: TBD	DATE: 3/26/25	SCALE: 6" = 1'-0"
DRAWN BY: RW	CONTRACTOR:									
APPROVED BY: MJ	INSTALLED BY: TBD	DATE: 3/26/25	SCALE: 6" = 1'-0"							

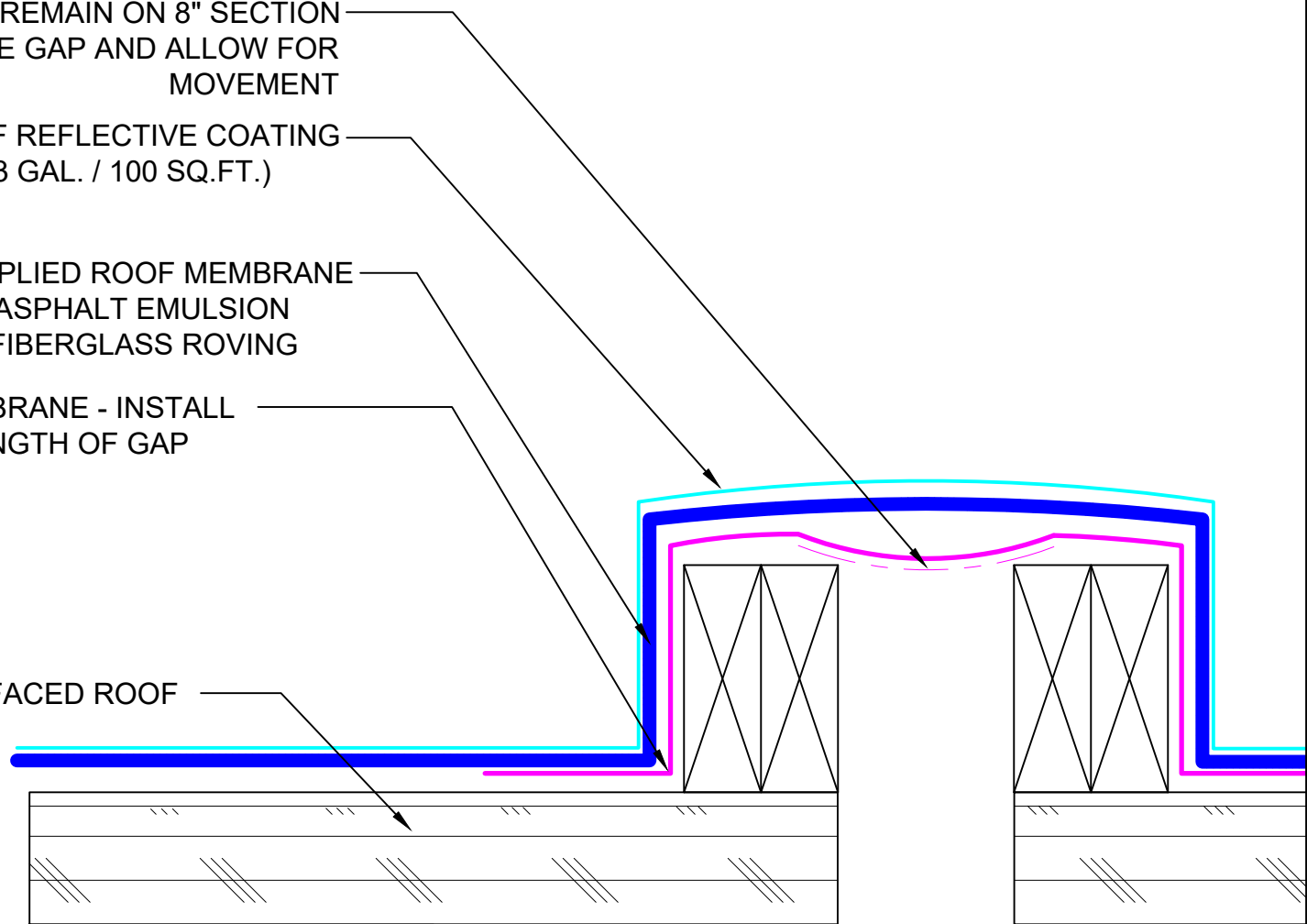
BACKING STRIP TO REMAIN ON 8" SECTION
TO STRADDLE GAP AND ALLOW FOR
MOVEMENT

CA TITLE 24 COOL ROOF REFLECTIVE COATING
(2 COATS @ 1.5 GAL. = 3 GAL. / 100 SQ.FT.)

SPECIFIED FLUID APPLIED ROOF MEMBRANE
30 GAL / 100 SQ. FT. ASPHALT EMULSION
16 LBS / 100 SQ. FT. FIBERGLASS ROVING

SELF ADHERING MEMBRANE - INSTALL
CONTINUOUS FOR LENGTH OF GAP

EXISTING SMOOTH SURFACED ROOF



Roof System:

R-16-30-A

WEATHERWELD
ROOFING MADE SIMPLE
A DIVISION OF LIQUIFORM TECHNOLOGIES, INC.

9757 7th Street, Suite 803
Rancho Cucamonga, CA 91730-5297
(888) 440-3224 | www.weatherweld.com

PROJECT:

DRAWING TITLE:

MODULAR CLASSROOM JOIN DETAIL

DETAIL NUMBER:

404

DRAWN BY:

RW

CONTRACTOR:

APPROVED BY:

MJ

INSTALLED BY:

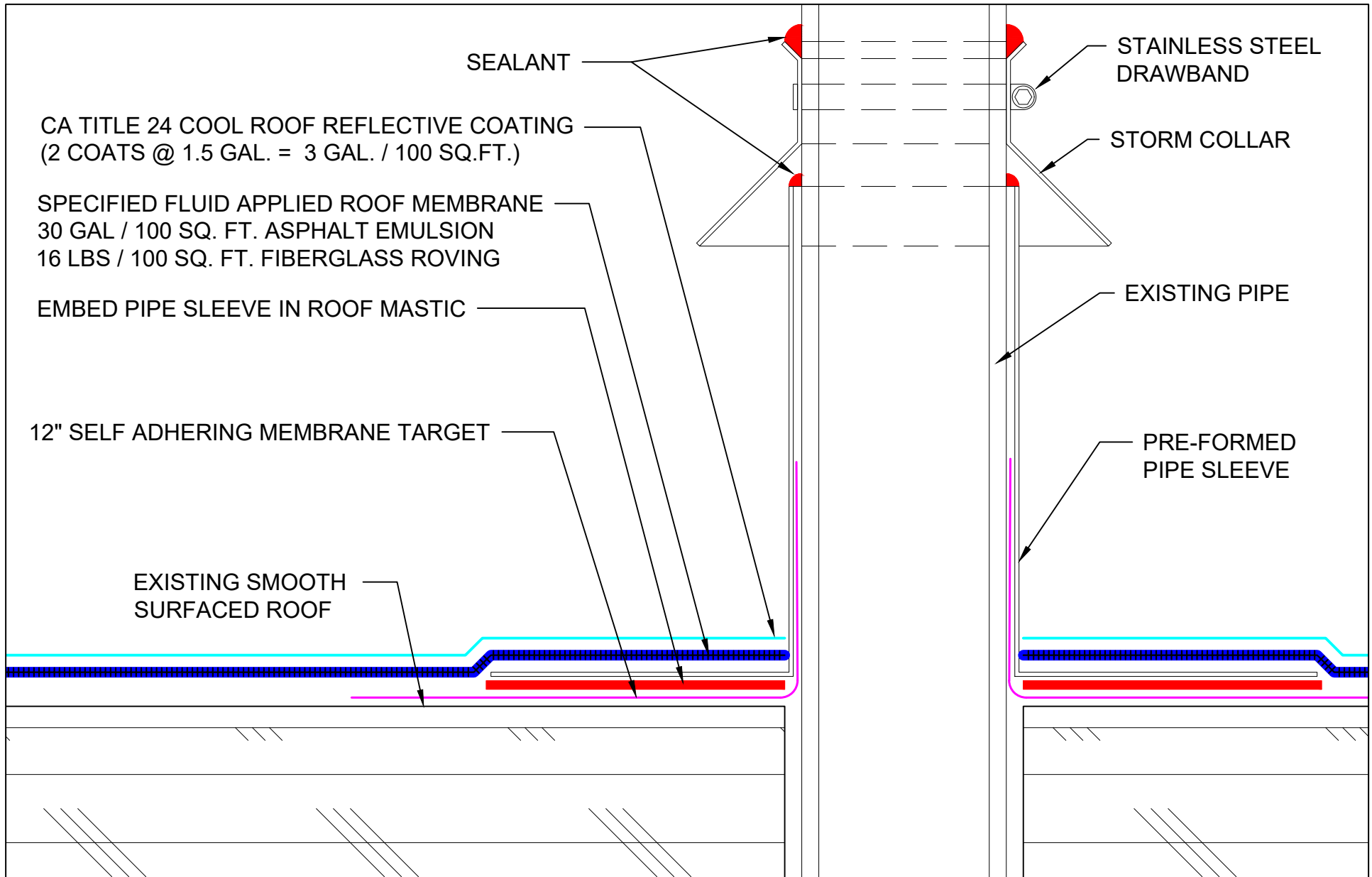
TBD

DATE:

3/26/25

SCALE:

3" = 1'-0"



Roof System:

R-16-30-A

WEATHERWELD
ROOFING MADE SIMPLE
A DIVISION OF LIQUIFORM TECHNOLOGIES, INC.

9757 7th Street, Suite 803
Rancho Cucamonga, CA 91730-5297
(888) 440-3224 | www.weatherweld.com

DRAWING TITLE: **PIPE PENETRATION FLASHING**

DETAIL NUMBER: **501**

PROJECT:

DRAWN BY: **RW**

CONTRACTOR:

APPROVED BY: **MJ**

INSTALLED BY: **TBD**

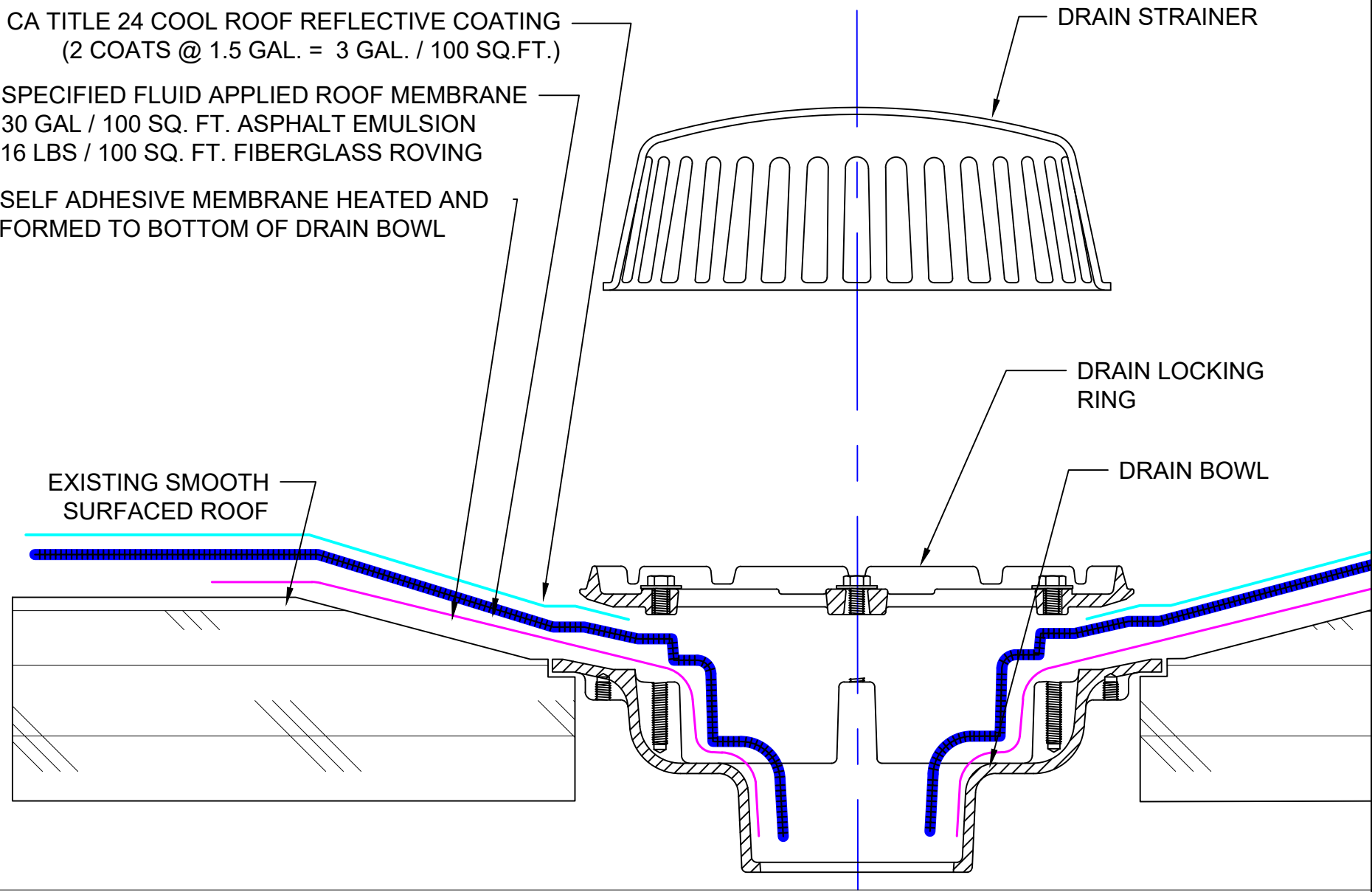
DATE: **3/26/25**

SCALE: **6" = 1'-0"**

CA TITLE 24 COOL ROOF REFLECTIVE COATING
(2 COATS @ 1.5 GAL. = 3 GAL. / 100 SQ.FT.)

SPECIFIED FLUID APPLIED ROOF MEMBRANE
30 GAL / 100 SQ. FT. ASPHALT EMULSION
16 LBS / 100 SQ. FT. FIBERGLASS ROVING

SELF ADHESIVE MEMBRANE HEATED AND
FORMED TO BOTTOM OF DRAIN BOWL



EXISTING SMOOTH
SURFACED ROOF

DRAIN STRAINER

DRAIN LOCKING
RING

DRAIN BOWL

Roof System:

R-16-30-A



9757 7th Street, Suite 803
Rancho Cucamonga, CA 91730-5297
(888) 440-3224 | www.weatherweld.com

PROJECT:			
DRAWN BY: RW	CONTRACTOR:		
APPROVED BY: MJ	INSTALLED BY: TBD <table border="1" style="float: right;"> <tr> <td>DATE: 3/26/25</td> <td>SCALE: 6" = 1'-0"</td> </tr> </table>	DATE: 3/26/25	SCALE: 6" = 1'-0"
DATE: 3/26/25	SCALE: 6" = 1'-0"		

DRAWING TITLE:
DRAIN DETAIL

DETAIL NUMBER:
502

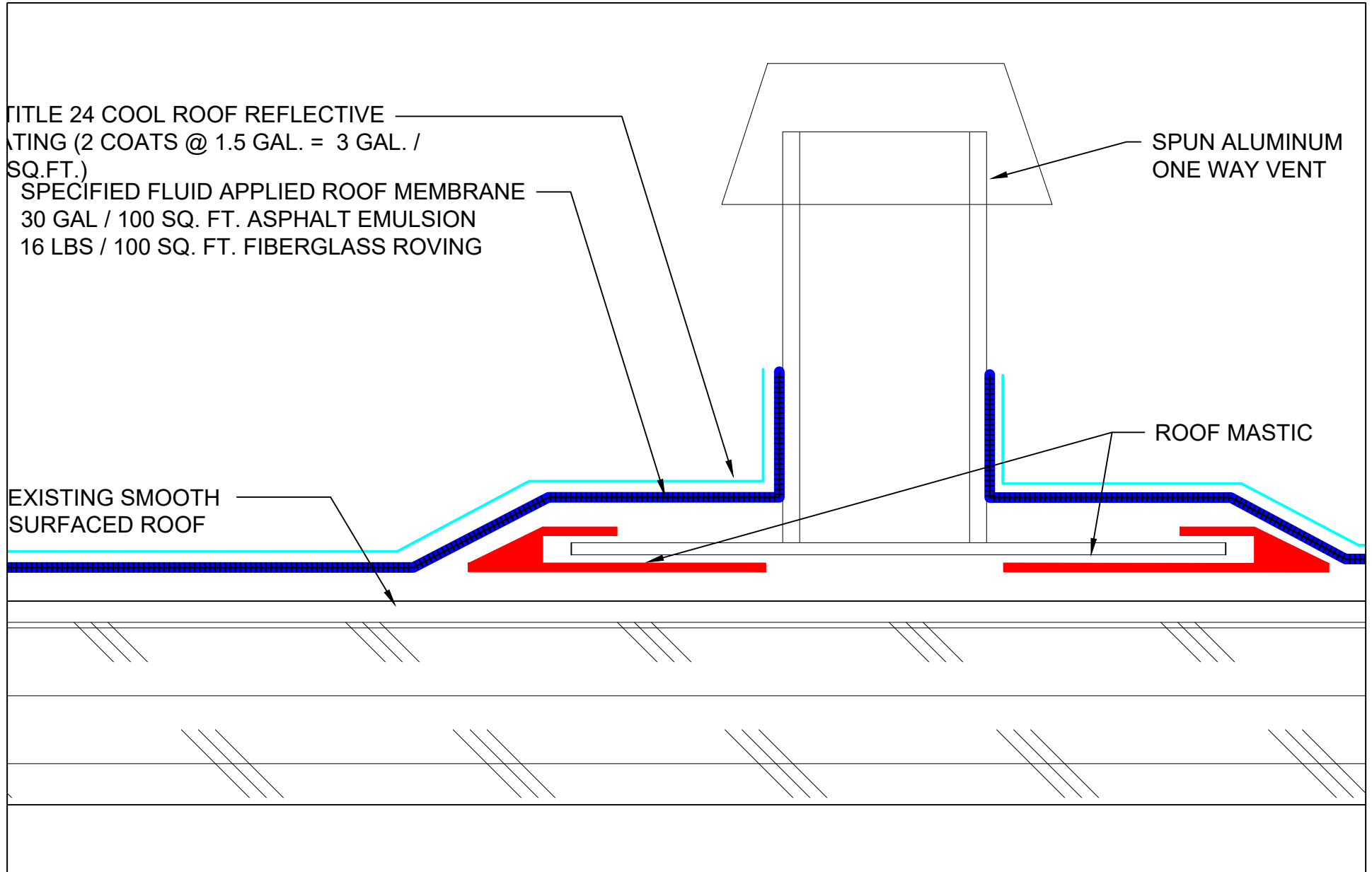
TITLE 24 COOL ROOF REFLECTIVE
PAINTING (2 COATS @ 1.5 GAL. = 3 GAL. /
SQ.FT.)

SPECIFIED FLUID APPLIED ROOF MEMBRANE
30 GAL / 100 SQ. FT. ASPHALT EMULSION
16 LBS / 100 SQ. FT. FIBERGLASS ROVING

SPUN ALUMINUM
ONE WAY VENT

ROOF MASTIC

EXISTING SMOOTH
SURFACED ROOF



Roof System: R-16-30-A	WEATHERWELD ROOFING MADE SIMPLE A DIVISION OF LIQUIFORM TECHNOLOGIES, INC.	9757 7 th Street, Suite 803 Rancho Cucamonga, CA 91730-5297 (888) 440-3224 www.weatherweld.com		PROJECT:			
		DRAWING TITLE: ONE WAY VENT	DETAIL NUMBER: 505	DRAWN BY: RW	CONTRACTOR:		
				APPROVED BY: MJ	INSTALLED BY: TBD	DATE: 3/26/25	SCALE: 6" = 1'-0"