

CA TITLE 24 COOL ROOF REFLECTIVE COATING
(2 COATS @ 1.5 GAL. = 3 GAL. / 100 SQ.FT.)

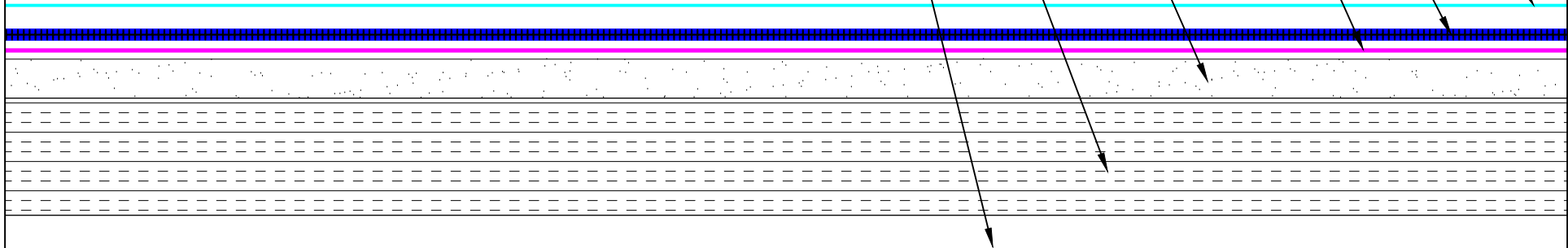
SPECIFIED FLUID APPLIED ROOF MEMBRANE
30 GAL / 100 SQ. FT. ASPHALT EMULSION
16 LBS / 100 SQ. FT. FIBERGLASS ROVING

G2 BASE SHEET APPLIED WITH BASE SHEET
ADHESIVE

APPROVED SUBSTRATE BOARD

RIGID POLYISOCYANURATE INSULATION

APPROVED ROOF SUBSTRATE



Roof System:
I-1B-16-30-A

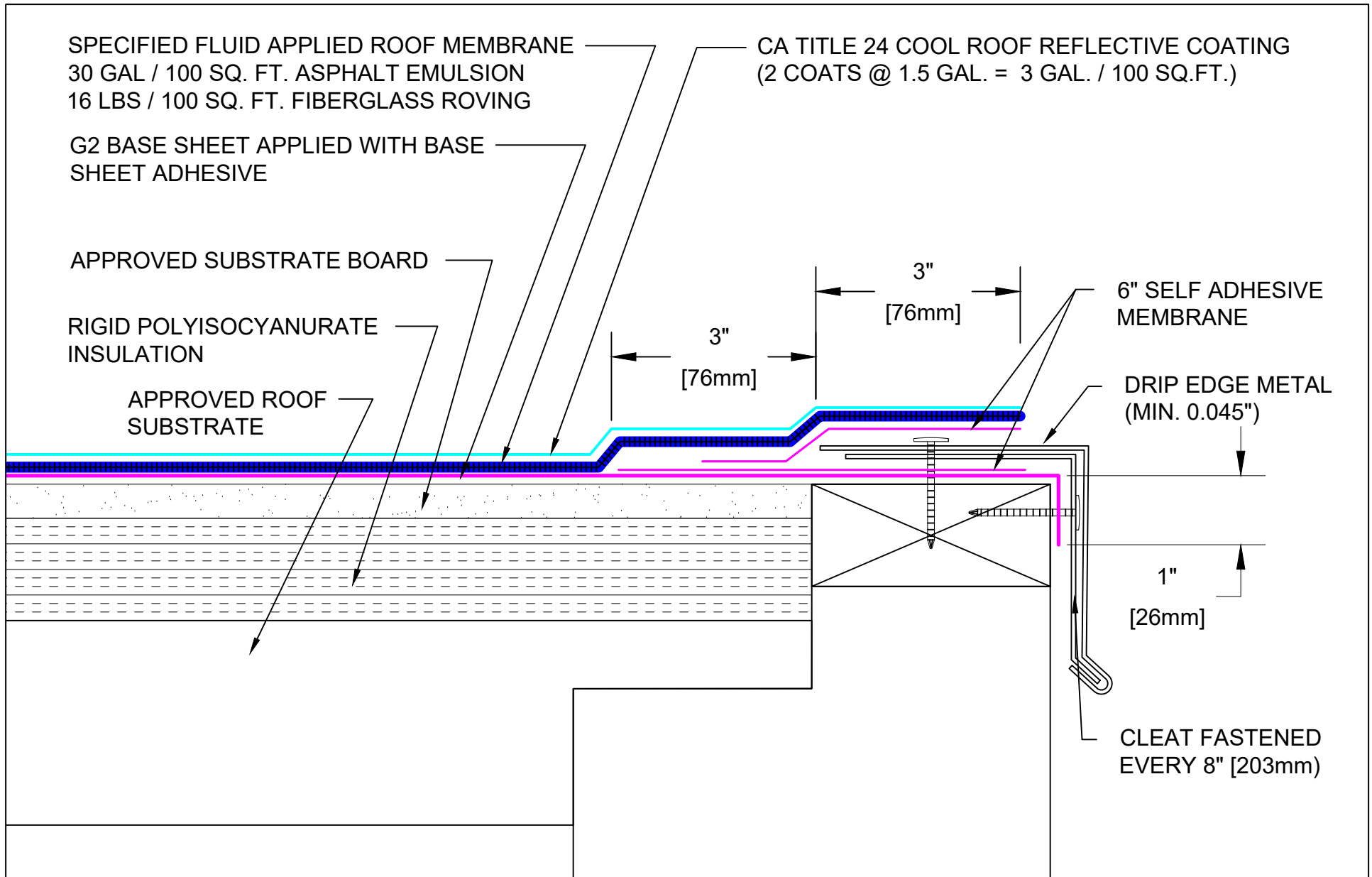


9757 7th Street, Suite 803
Rancho Cucamonga, CA 91730-5297
(888) 440-3224 | www.weatherweld.com

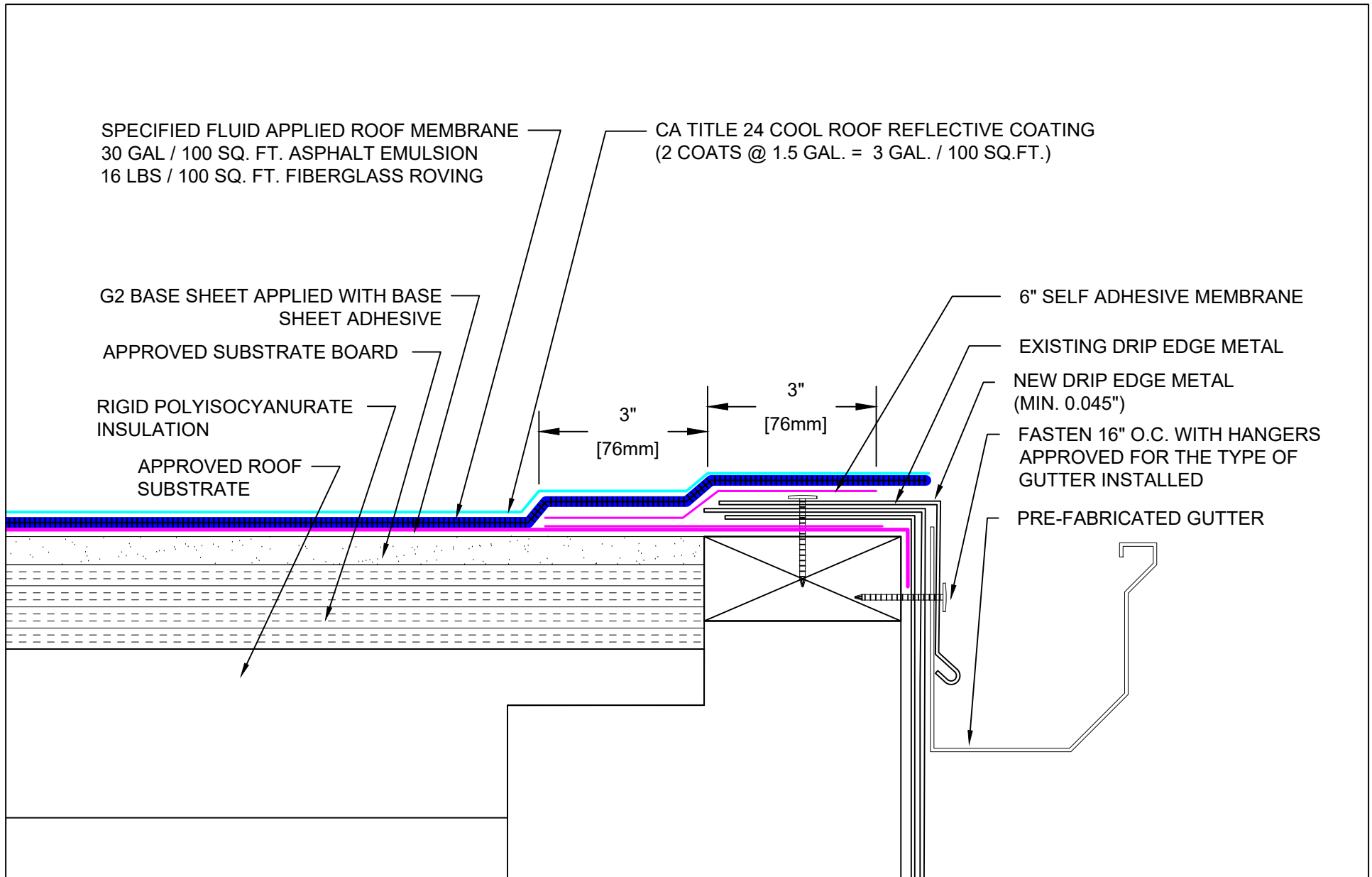
PROJECT:		CONTRACTOR:	
DRAWN BY: RW	APPROVED BY: MJ		
DATE: 3/26/25	SCALE: NTS	INSTALLED BY:	


DRAWING TITLE:
SYSTEM OVERVIEW

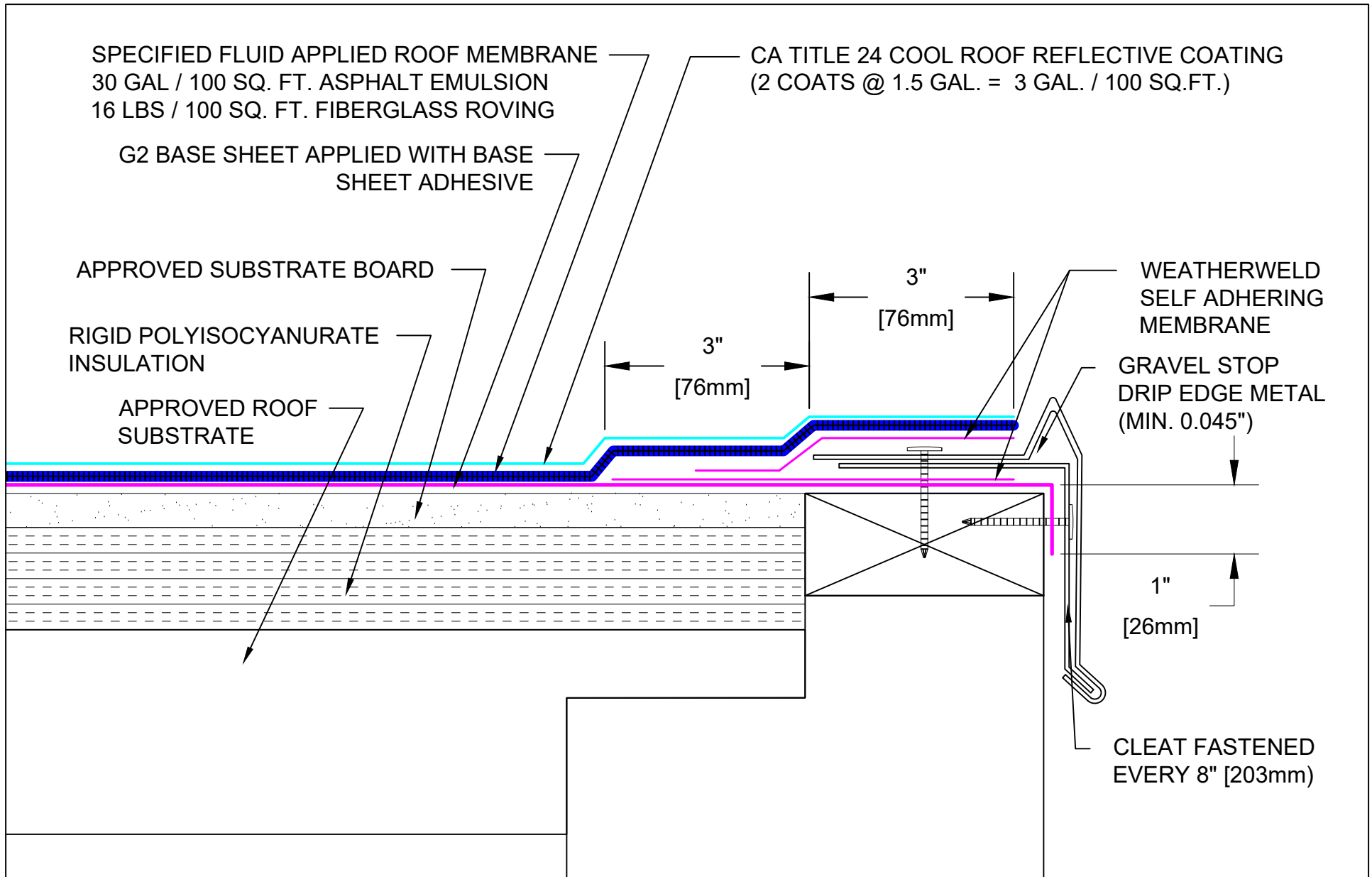
DETAIL NUMBER:
101



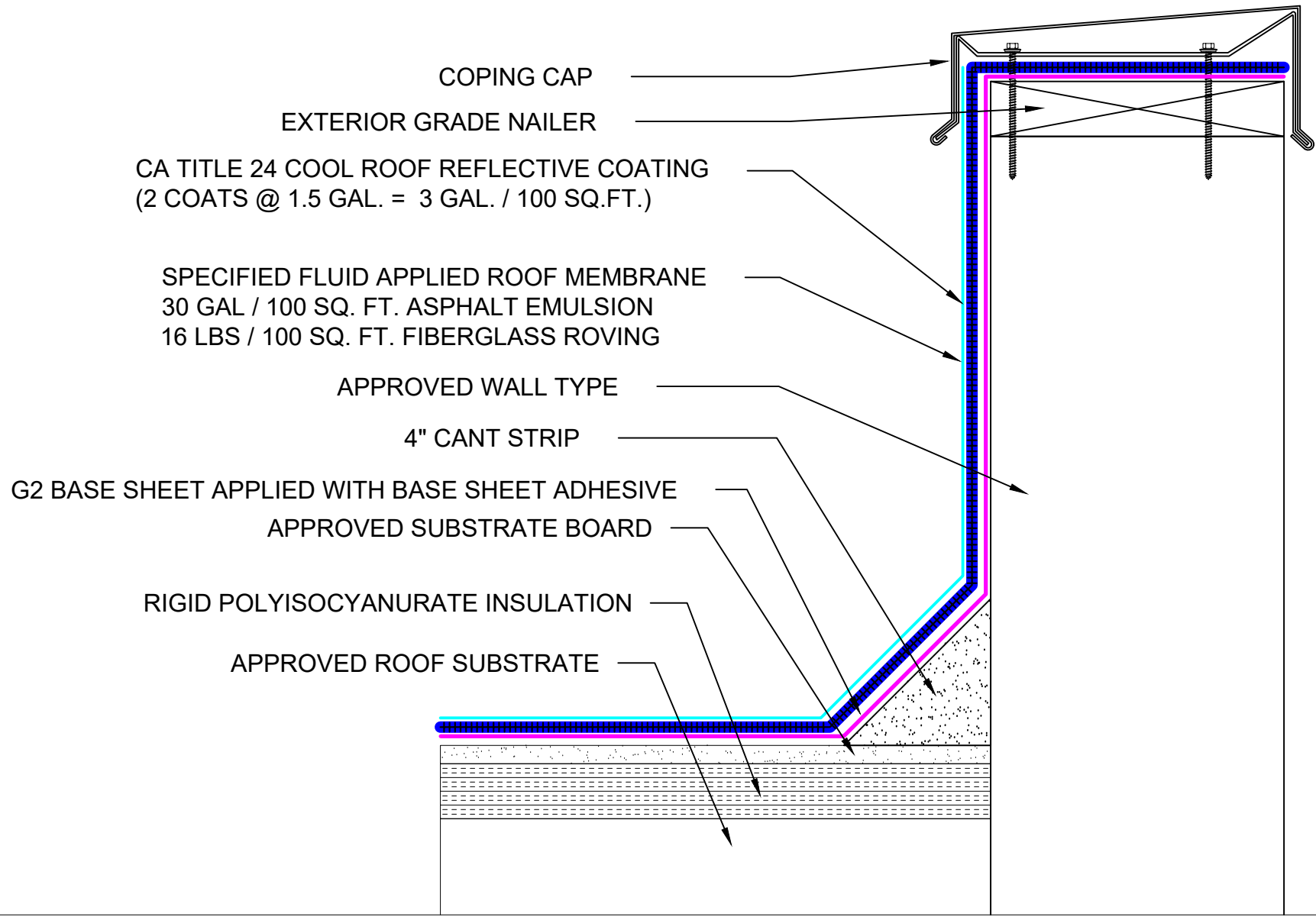
Roof System: <h1 style="text-align: center;">I-1B-16-30-A</h1>	<div style="display: flex; justify-content: space-between; align-items: center;"> <div data-bbox="567 1339 840 1421"> </div> <div data-bbox="966 1339 1333 1421"> <p>9757 7th Street, Suite 803 Rancho Cucamonga, CA 91730-5297 (888) 440-3224 www.weatherweld.com</p> </div> </div> <div style="display: flex; justify-content: space-between; align-items: center; margin-top: 10px;"> <div data-bbox="567 1421 1312 1528"> <p>DRAWING TITLE: EDGE FLASHING</p> </div> <div data-bbox="1312 1421 1449 1528"> <p>DETAIL NUMBER: 201</p> </div> </div>	PROJECT: <div style="display: flex; justify-content: space-between; align-items: center;"> <div data-bbox="1449 1421 1585 1528"> <p>DRAWN BY: RW</p> <p>APPROVED BY: MJ</p> </div> <div data-bbox="1585 1421 1722 1528"> <p>CONTRACTOR: TBD</p> </div> <div data-bbox="1722 1469 1858 1528"> <p>DATE: 3/26/25</p> </div> <div data-bbox="1858 1469 2009 1528"> <p>SCALE: 6" = 1'-0"</p> </div> </div>
---	---	---



Roof System: <h1 style="text-align: center;">I-1B-16-30-A</h1>	<div style="text-align: center;">  <p>WEATHERWELD ROOFING MADE SIMPLE A DIVISION OF LIQUIFORM TECHNOLOGIES, INC.</p> </div> <div style="text-align: center;"> <p>9757 7th Street, Suite 803 Rancho Cucamonga, CA 91730-5297 (888) 440-3224 www.weatherweld.com</p> </div>	PROJECT: <table border="1" style="width: 100%;"> <tr> <td data-bbox="1449 1421 1585 1469">DRAWN BY: RW</td> <td colspan="3" data-bbox="1585 1421 2009 1469">CONTRACTOR:</td> </tr> <tr> <td data-bbox="1449 1469 1585 1528">APPROVED BY: MJ</td> <td data-bbox="1585 1469 1722 1528">INSTALLED BY: TBD</td> <td data-bbox="1722 1469 1858 1528">DATE: 3/26/25</td> <td data-bbox="1858 1469 2009 1528">SCALE: NTS</td> </tr> </table>	DRAWN BY: RW	CONTRACTOR:			APPROVED BY: MJ	INSTALLED BY: TBD	DATE: 3/26/25	SCALE: NTS
DRAWN BY: RW	CONTRACTOR:									
APPROVED BY: MJ	INSTALLED BY: TBD	DATE: 3/26/25	SCALE: NTS							
DRAWING TITLE: <h2 style="text-align: center;">GUTTER EDGE FLASHING - RETROFIT</h2>		DETAIL NUMBER: <h1 style="text-align: center;">205</h1>								



Roof System: <h1 style="text-align: center;">I-1B-16-30-A</h1>	<div style="display: flex; justify-content: space-between; align-items: center;"> <div data-bbox="577 1339 840 1421"> <p style="font-size: 8px; margin: 0;">A DIVISION OF LIQUIFORM TECHNOLOGIES, INC.</p> </div> <div data-bbox="966 1339 1344 1421" style="text-align: center;"> <p>9757 7th Street, Suite 803 Rancho Cucamonga, CA 91730-5297 (888) 440-3224 www.weatherweld.com</p> </div> </div> <div style="display: flex; justify-content: space-between; margin-top: 10px;"> <div data-bbox="577 1421 1312 1528"> <p style="font-size: 8px; margin: 0;">DRAWING TITLE:</p> <h2 style="text-align: center; margin: 0;">EDGE TERMINATION W/ GRAVEL STOP</h2> </div> <div data-bbox="1312 1421 1459 1528" style="text-align: center;"> <p style="font-size: 8px; margin: 0;">DETAIL NUMBER:</p> <h1 style="font-size: 24px; margin: 0;">207</h1> </div> </div>	<table border="1" style="width: 100%; border-collapse: collapse; font-size: 8px;"> <tr> <td colspan="4" data-bbox="1459 1339 2009 1372">PROJECT:</td> </tr> <tr> <td data-bbox="1459 1421 1585 1469">DRAWN BY: RW</td> <td colspan="3" data-bbox="1585 1421 2009 1469">CONTRACTOR:</td> </tr> <tr> <td data-bbox="1459 1469 1585 1528">APPROVED BY: MJ</td> <td data-bbox="1585 1469 1722 1528">INSTALLED BY: TBD</td> <td data-bbox="1722 1469 1858 1528">DATE: 3/26/25</td> <td data-bbox="1858 1469 2009 1528">SCALE: NTS</td> </tr> </table>	PROJECT:				DRAWN BY: RW	CONTRACTOR:			APPROVED BY: MJ	INSTALLED BY: TBD	DATE: 3/26/25	SCALE: NTS
PROJECT:														
DRAWN BY: RW	CONTRACTOR:													
APPROVED BY: MJ	INSTALLED BY: TBD	DATE: 3/26/25	SCALE: NTS											



COPING CAP

EXTERIOR GRADE NAILER

CA TITLE 24 COOL ROOF REFLECTIVE COATING
(2 COATS @ 1.5 GAL. = 3 GAL. / 100 SQ.FT.)

SPECIFIED FLUID APPLIED ROOF MEMBRANE
30 GAL / 100 SQ. FT. ASPHALT EMULSION
16 LBS / 100 SQ. FT. FIBERGLASS ROVING

APPROVED WALL TYPE


4" CANT STRIP

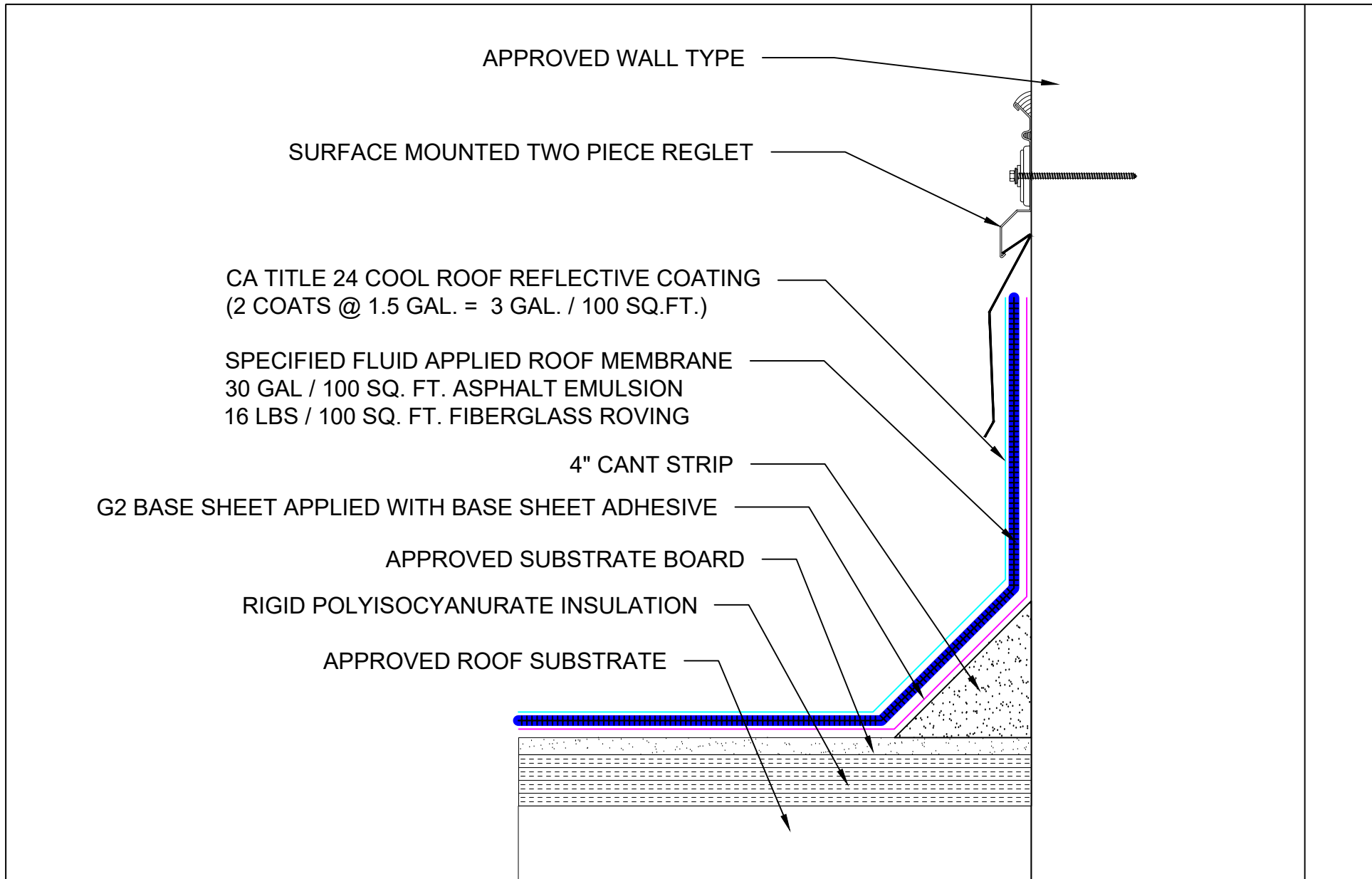
G2 BASE SHEET APPLIED WITH BASE SHEET ADHESIVE

APPROVED SUBSTRATE BOARD

RIGID POLYISOCYANURATE INSULATION

APPROVED ROOF SUBSTRATE

Roof System:	 <p>9757 7th Street, Suite 803 Rancho Cucamonga, CA 91730-5297 (888) 440-3224 www.weatherweld.com</p>	PROJECT:			
<p>I-1B-16-30-A</p>		DRAWING TITLE:	DETAIL NUMBER:	DRAWN BY:	CONTRACTOR:
	<p>COPING CAP FLASHING</p>	<p>301</p>	<p>RW</p>	<p>TBD</p>	<p>DATE: 3/26/25</p>



Roof System:
I-1B-16-30-A

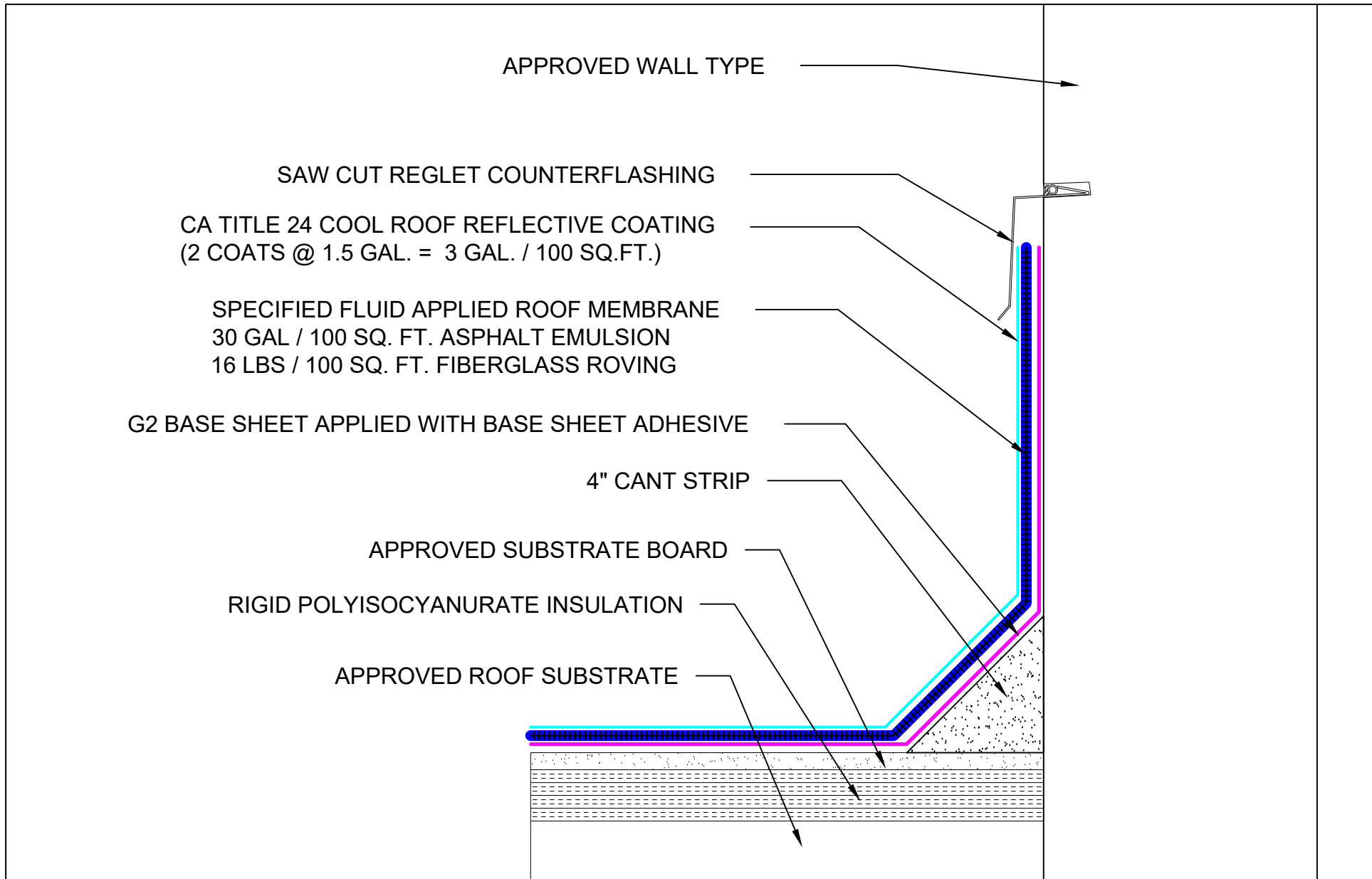
WEATHERWELD
ROOFING MADE SIMPLE
A DIVISION OF LIQUIFORM TECHNOLOGIES, INC.

9757 7th Street, Suite 803
Rancho Cucamonga, CA 91730-5297
(888) 440-3224 | www.weatherweld.com

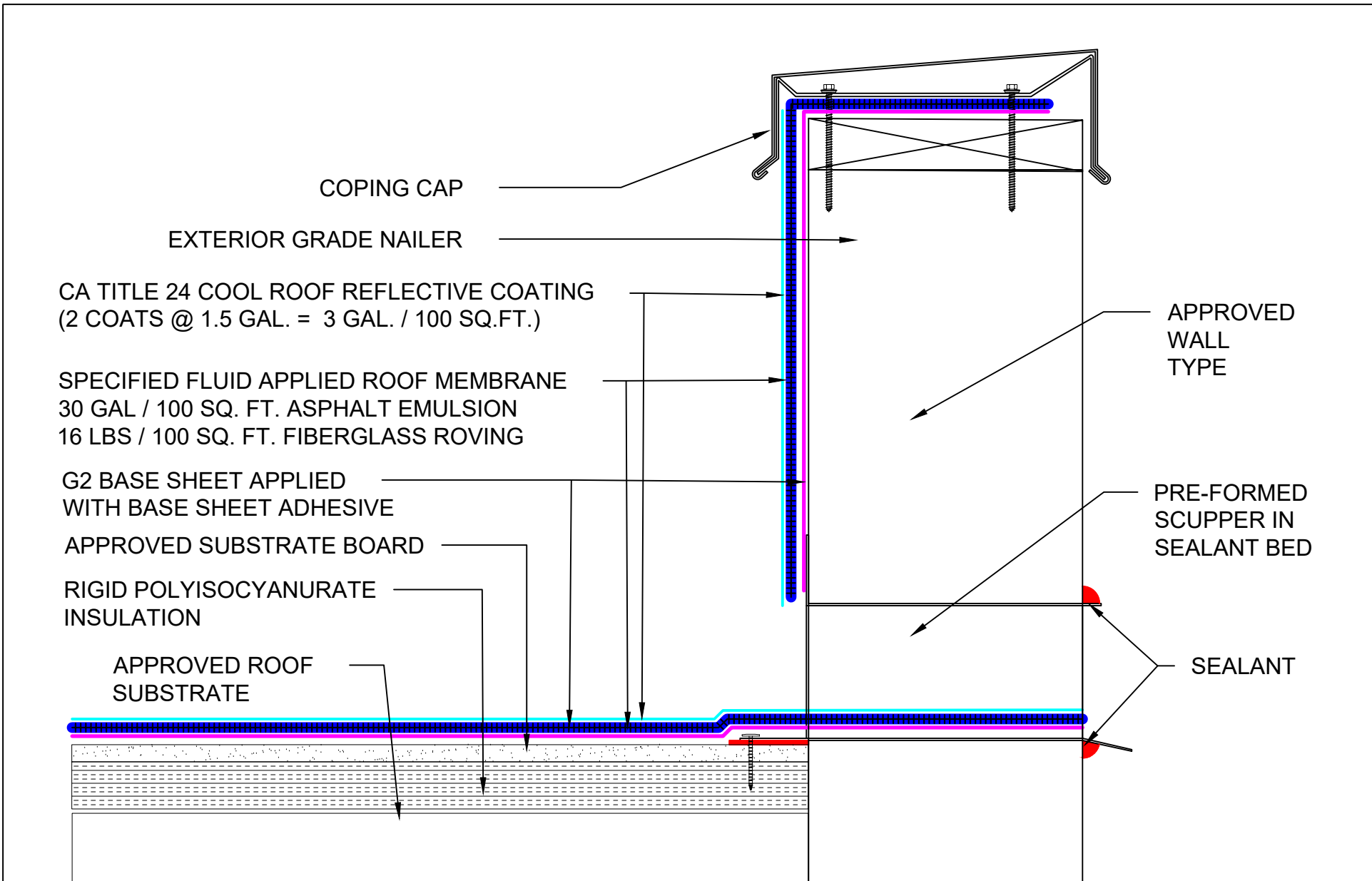
DRAWING TITLE: **SURFACE MOUNTED REGLET**

DETAIL NUMBER: **302**

PROJECT:			
DRAWN BY: RW	CONTRACTOR:		
APPROVED BY: MJ	INSTALLED BY: TBD	DATE: 3/26/25	SCALE: 3" = 1'-0"



<p>Roof System:</p> <p>I-1B-16-30-A</p>	<p>WEATHERWELD <small>ROOFING MADE SIMPLE</small> <small>A DIVISION OF LIQUIFORM TECHNOLOGIES, INC.</small></p> <p>9757 7th Street, Suite 803 Rancho Cucamonga, CA 91730-5297 (888) 440-3224 www.weatherweld.com</p>	<p>PROJECT:</p>			
<p>DRAWING TITLE:</p> <p>SAW CUT REGLET</p>	<p>DETAIL NUMBER:</p> <p>303</p>	<p>DRAWN BY:</p> <p>RW</p>	<p>CONTRACTOR:</p>		
		<p>APPROVED BY:</p> <p>MJ</p>	<p>INSTALLED BY:</p> <p>TBD</p>	<p>DATE:</p> <p>3/26/25</p>	<p>SCALE:</p> <p>3" = 1'-0"</p>



COPING CAP

EXTERIOR GRADE NAILER

CA TITLE 24 COOL ROOF REFLECTIVE COATING
(2 COATS @ 1.5 GAL. = 3 GAL. / 100 SQ.FT.)

SPECIFIED FLUID APPLIED ROOF MEMBRANE
30 GAL / 100 SQ. FT. ASPHALT EMULSION
16 LBS / 100 SQ. FT. FIBERGLASS ROVING

G2 BASE SHEET APPLIED
WITH BASE SHEET ADHESIVE

APPROVED SUBSTRATE BOARD

RIGID POLYISOCYANURATE
INSULATION

APPROVED ROOF
SUBSTRATE

APPROVED
WALL
TYPE

PRE-FORMED
SCUPPER IN
SEALANT BED

SEALANT

Roof System:

I-1B-16-30-A

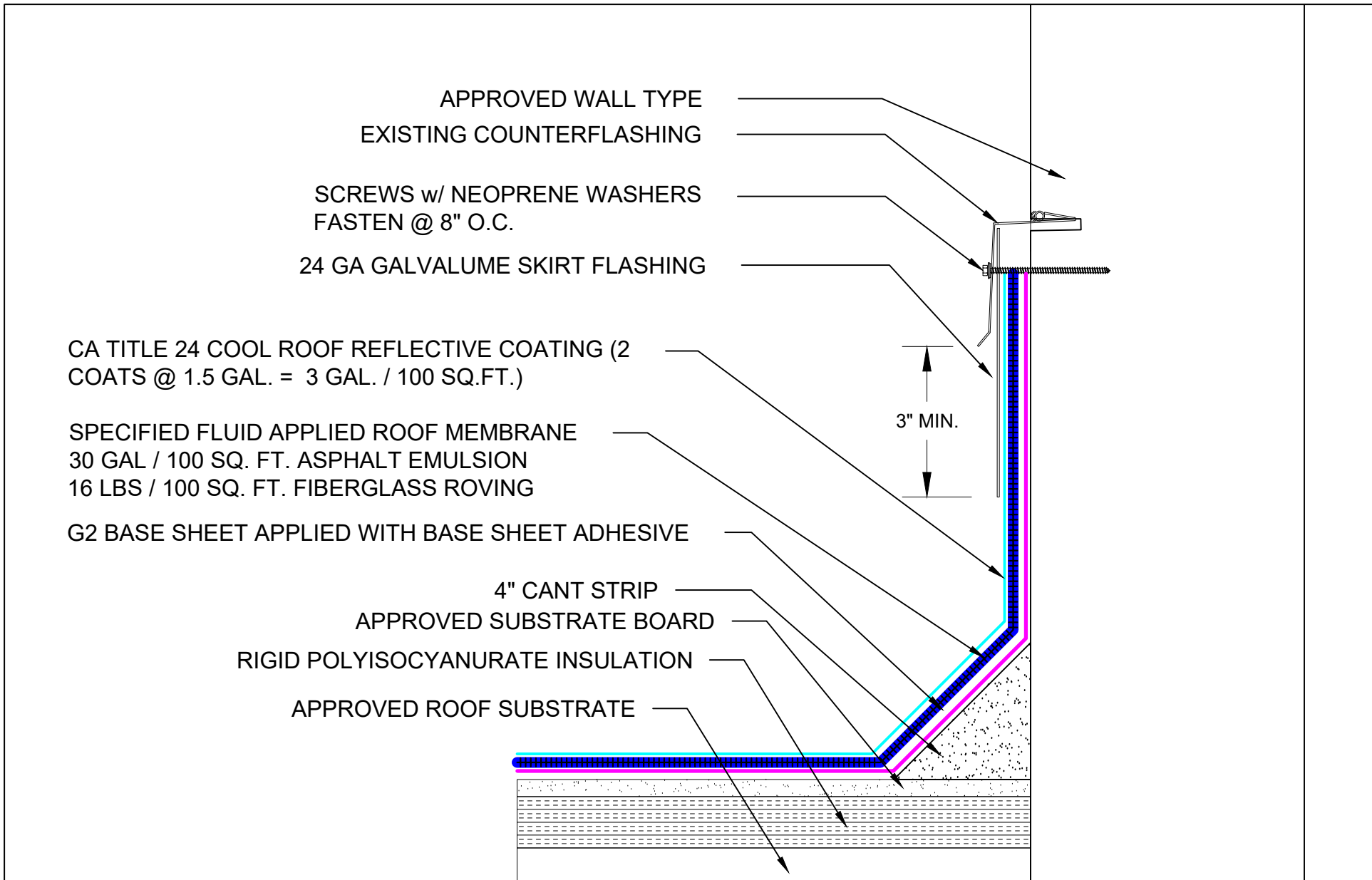
WEATHERWELD
ROOFING MADE SIMPLE
A DIVISION OF LIQUIFORM TECHNOLOGIES, INC.

9757 7th Street, Suite 803
Rancho Cucamonga, CA 91730-5297
(888) 440-3224 | www.weatherweld.com

DRAWING TITLE:
THRU WALL SCUPPER FLASHING

DETAIL NUMBER:
306

PROJECT:			
DRAWN BY: RW	CONTRACTOR:		
APPROVED BY: MJ	INSTALLED BY: TBD	DATE: 3/26/25	SCALE: 3" = 1'-0"



Roof System:

I-1B-16-30-A

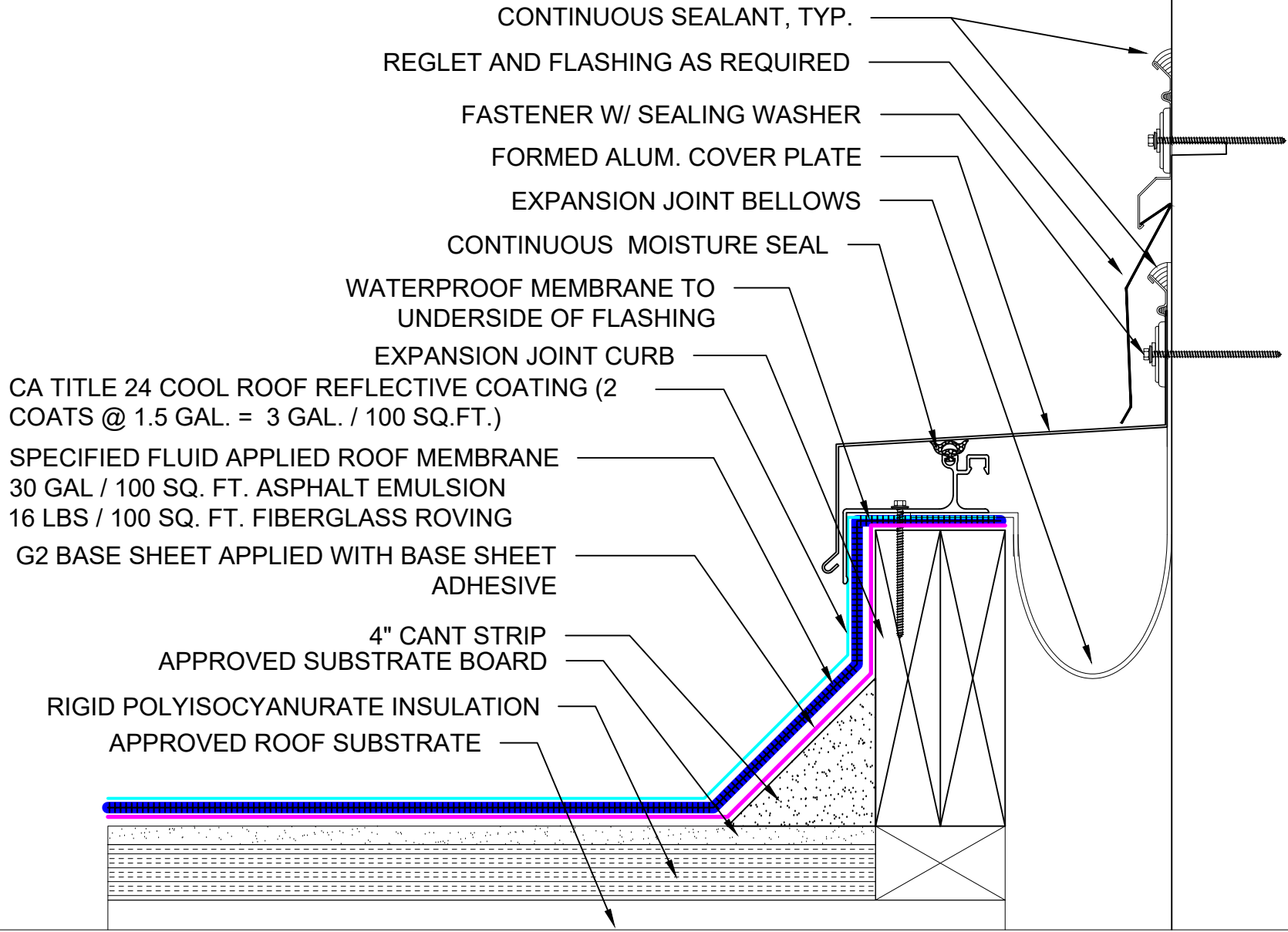
WEATHERWELD
ROOFING MADE SIMPLE
A DIVISION OF LIQUIFORM TECHNOLOGIES, INC.

9757 7th Street, Suite 803
 Rancho Cucamonga, CA 91730-5297
 (888) 440-3224 | www.weatherweld.com

DRAWING TITLE: **SKIRTED COUNTERFLASHING**

DETAIL NUMBER: **307**

PROJECT:			
DRAWN BY: RW	CONTRACTOR:		
APPROVED BY: MJ	INSTALLED BY: TBD	DATE: 3/26/25	SCALE: 3" = 1'-0"



CONTINUOUS SEALANT, TYP.
 REGLET AND FLASHING AS REQUIRED
 FASTENER W/ SEALING WASHER
 FORMED ALUM. COVER PLATE
 EXPANSION JOINT BELLOWS
 CONTINUOUS MOISTURE SEAL
 WATERPROOF MEMBRANE TO
 UNDERSIDE OF FLASHING
 EXPANSION JOINT CURB

CA TITLE 24 COOL ROOF REFLECTIVE COATING (2
 COATS @ 1.5 GAL. = 3 GAL. / 100 SQ.FT.)
 SPECIFIED FLUID APPLIED ROOF MEMBRANE
 30 GAL / 100 SQ. FT. ASPHALT EMULSION
 16 LBS / 100 SQ. FT. FIBERGLASS ROVING
 G2 BASE SHEET APPLIED WITH BASE SHEET
 ADHESIVE

4" CANT STRIP
 APPROVED SUBSTRATE BOARD
 RIGID POLYISOCYANURATE INSULATION
 APPROVED ROOF SUBSTRATE

Roof System:
I-1B-16-30-A

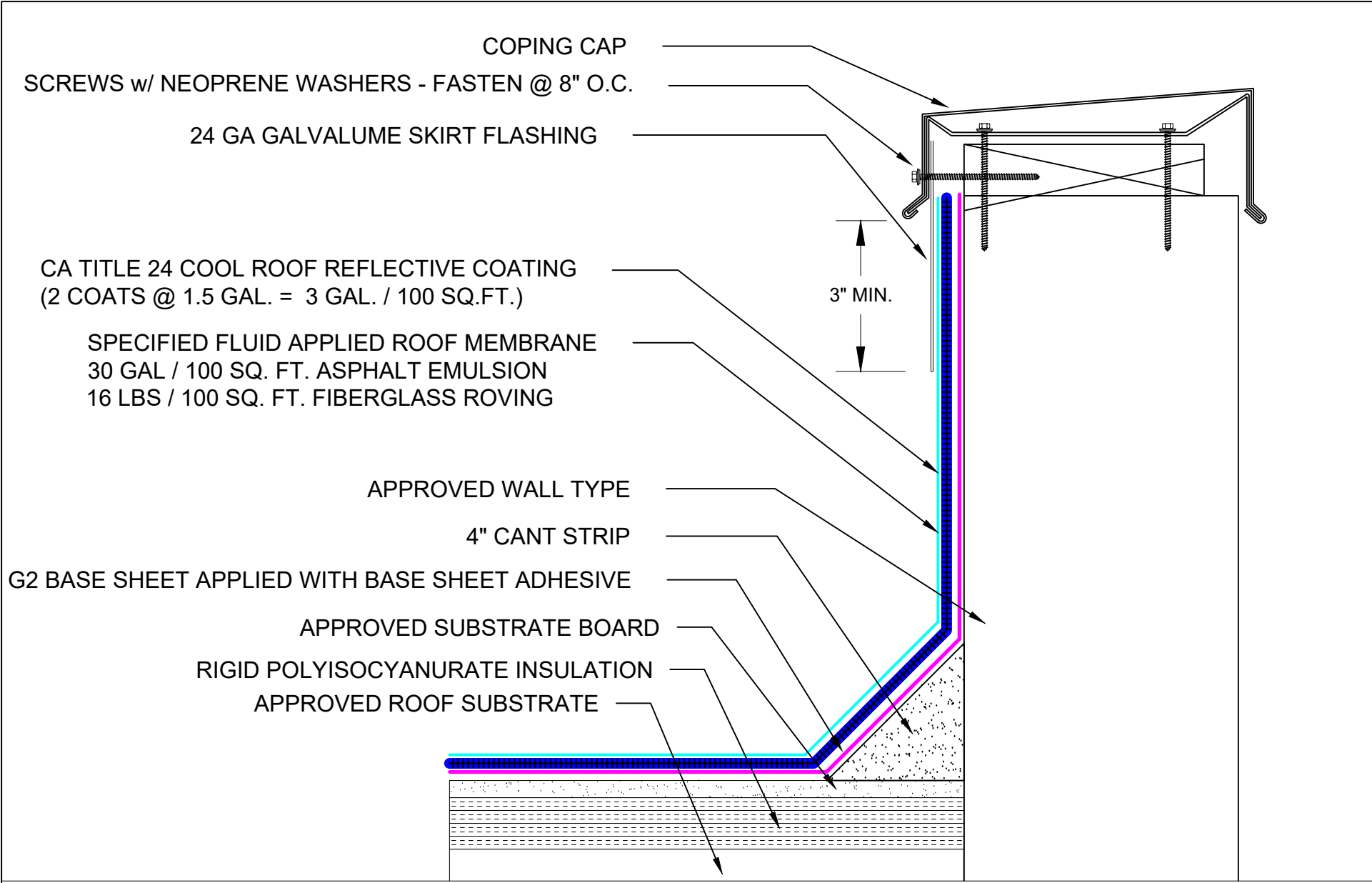



9757 7th Street, Suite 803
 Rancho Cucamonga, CA 91730-5297
 (888) 440-3224 | www.weatherweld.com

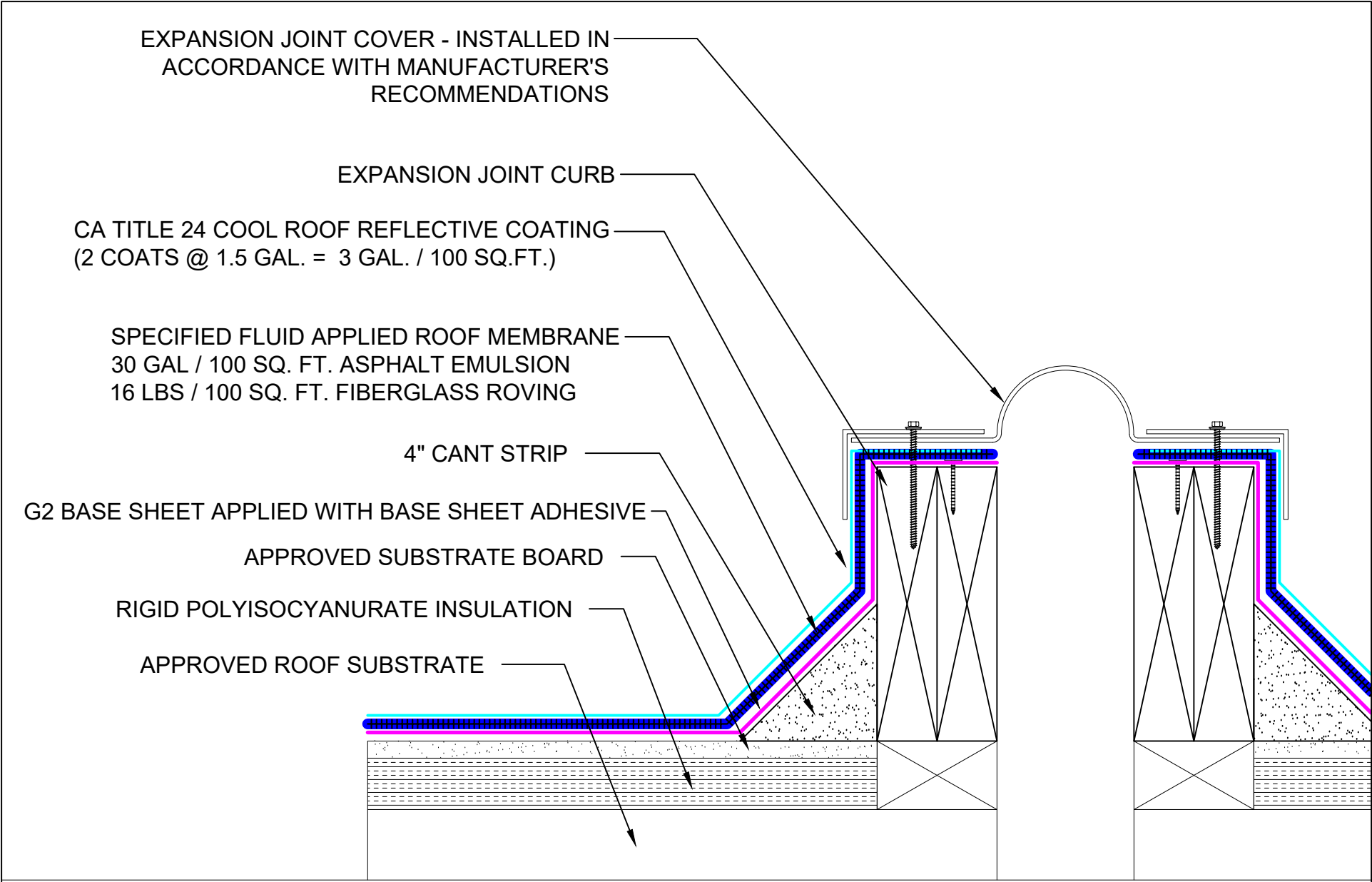
DRAWING TITLE:
ROOF TO WALL EXPANSION JOINT

DETAIL NUMBER:
308

PROJECT:			
DRAWN BY: RW	CONTRACTOR:		
APPROVED BY: MJ	INSTALLED BY: TBD	DATE: 3/26/25	SCALE: 3" = 1'-0"



Roof System: <h1>I-1B-16-30-A</h1>	 <p>9757 7th Street, Suite 803 Rancho Cucamonga, CA 91730-5297 (888) 440-3224 www.weatherweld.com</p>	PROJECT:			
DRAWING TITLE: <h2>SKIRTED COPING CAP</h2>	DETAIL NUMBER: <h2>309</h2>	DRAWN BY: RW	CONTRACTOR:		
		APPROVED BY: MJ	INSTALLED BY: TBD	DATE: 3/26/25	SCALE: 3" = 1'-0"



Roof System:

I-1B-16-30-A

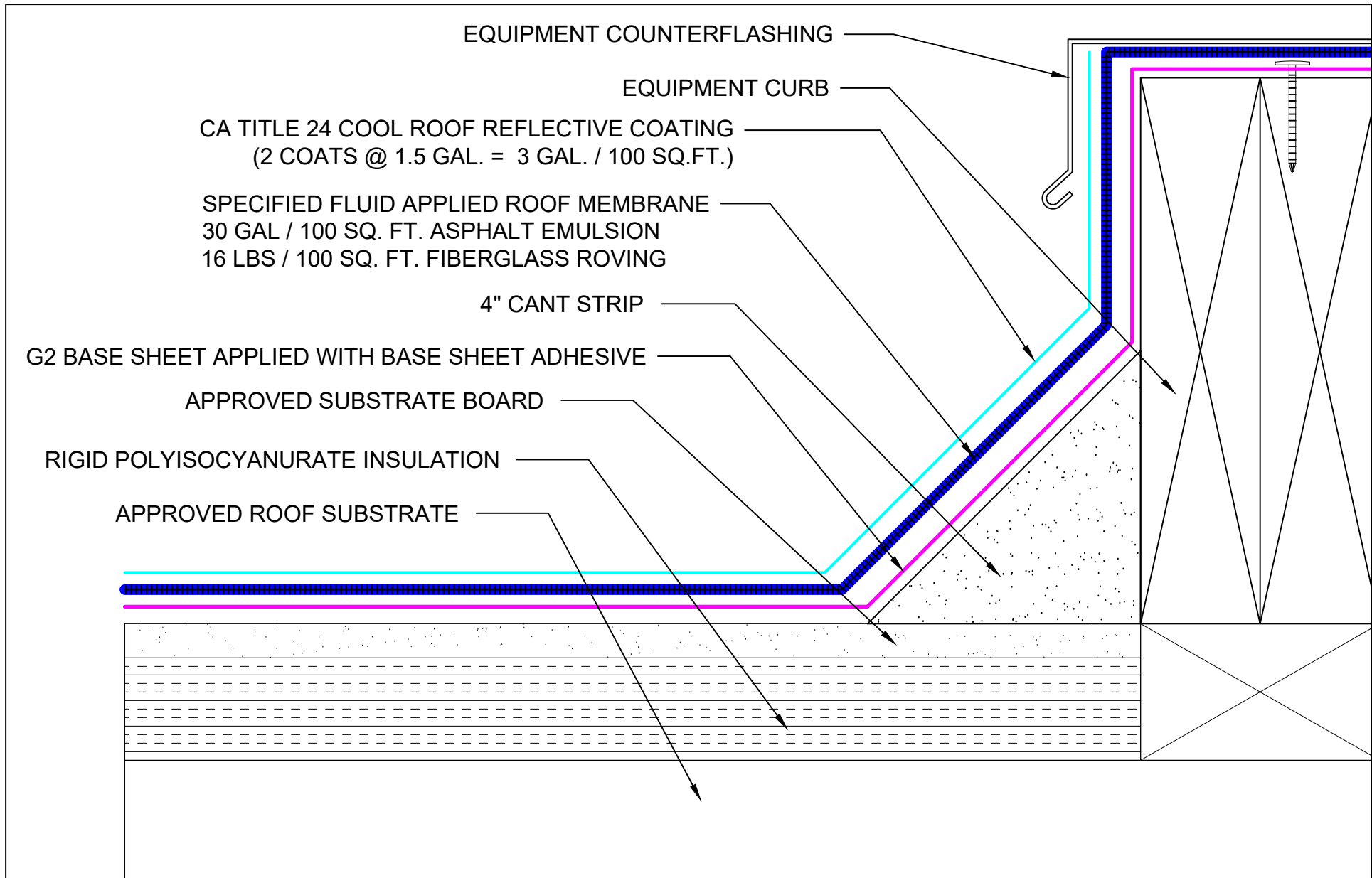
WEATHERWELD
ROOFING MADE SIMPLE
A DIVISION OF LIQUIFORM TECHNOLOGIES, INC.


9757 7th Street, Suite 803
 Rancho Cucamonga, CA 91730-5297
 (888) 440-3224 | www.weatherweld.com

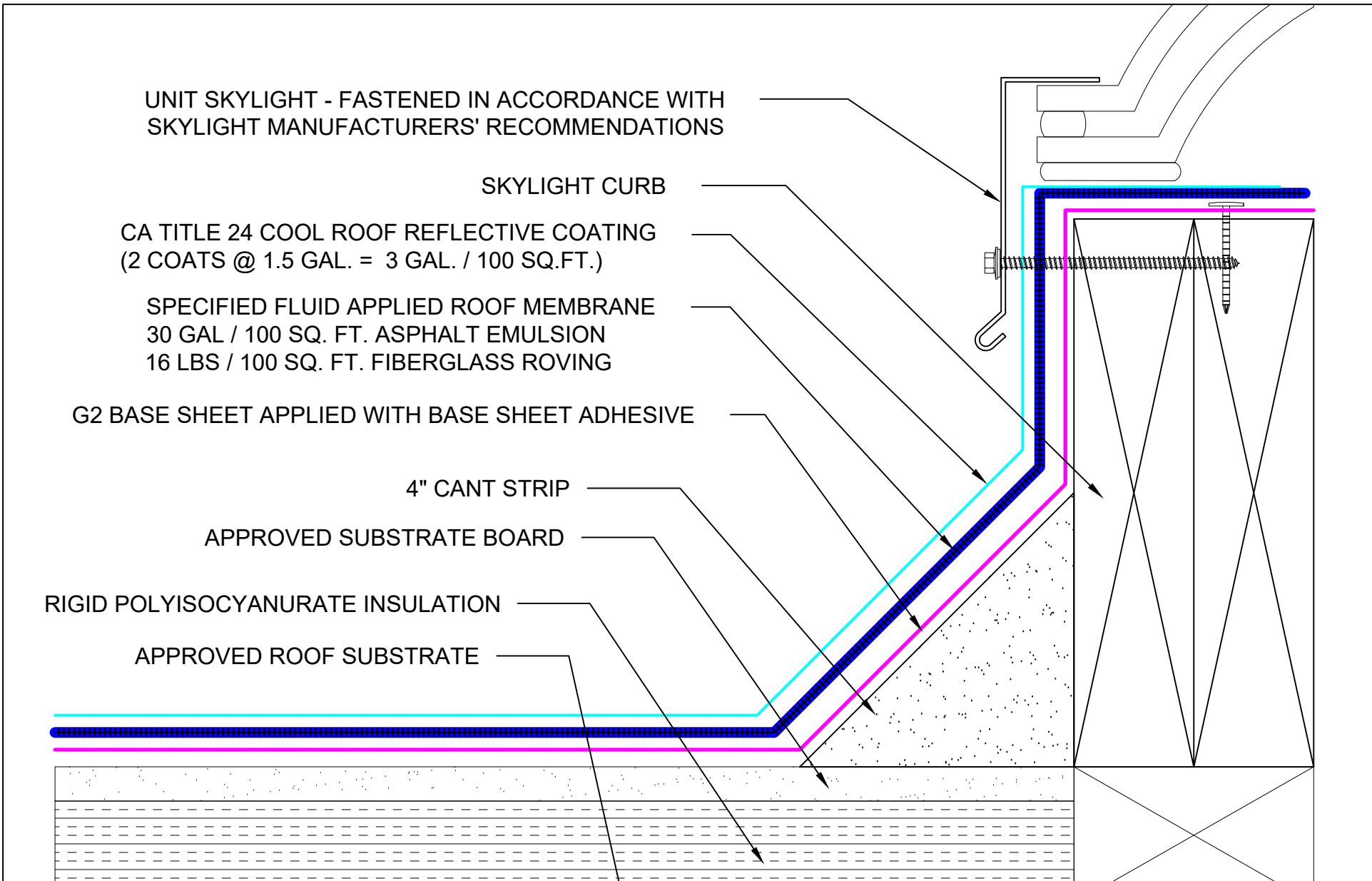
DRAWING TITLE: **EXPANSION JOINT**

DETAIL NUMBER: **401**

PROJECT:			
DRAWN BY:	CONTRACTOR:		
RW			
APPROVED BY:	INSTALLED BY:	DATE:	SCALE:
MJ	TBD	3/26/25	3" = 1'-0"



Roof System: <h1>I-1B-16-30-A</h1>	 <p>9757 7th Street, Suite 803 Rancho Cucamonga, CA 91730-5297 (888) 440-3224 www.weatherweld.com</p>	PROJECT:			
DRAWING TITLE: <h2>EQUIPMENT CURB FLASHING</h2>	DETAIL NUMBER: <h1>402</h1>	DRAWN BY: RW	CONTRACTOR:		
		APPROVED BY: MJ	INSTALLED BY: TBD	DATE: 3/26/25	SCALE: 6" = 1'-0"



Roof System:

I-1B-16-30-A

WEATHERWELD
 ROOFING MADE SIMPLE
 A DIVISION OF LIQUIFORM TECHNOLOGIES, INC.

9757 7th Street, Suite 803
 Rancho Cucamonga, CA 91730-5297
 (888) 440-3224 | www.weatherweld.com

DRAWING TITLE:
CURB MOUNTED SKYLIGHT FLASHING

DETAIL NUMBER:
403

PROJECT:

DRAWN BY:
 RW

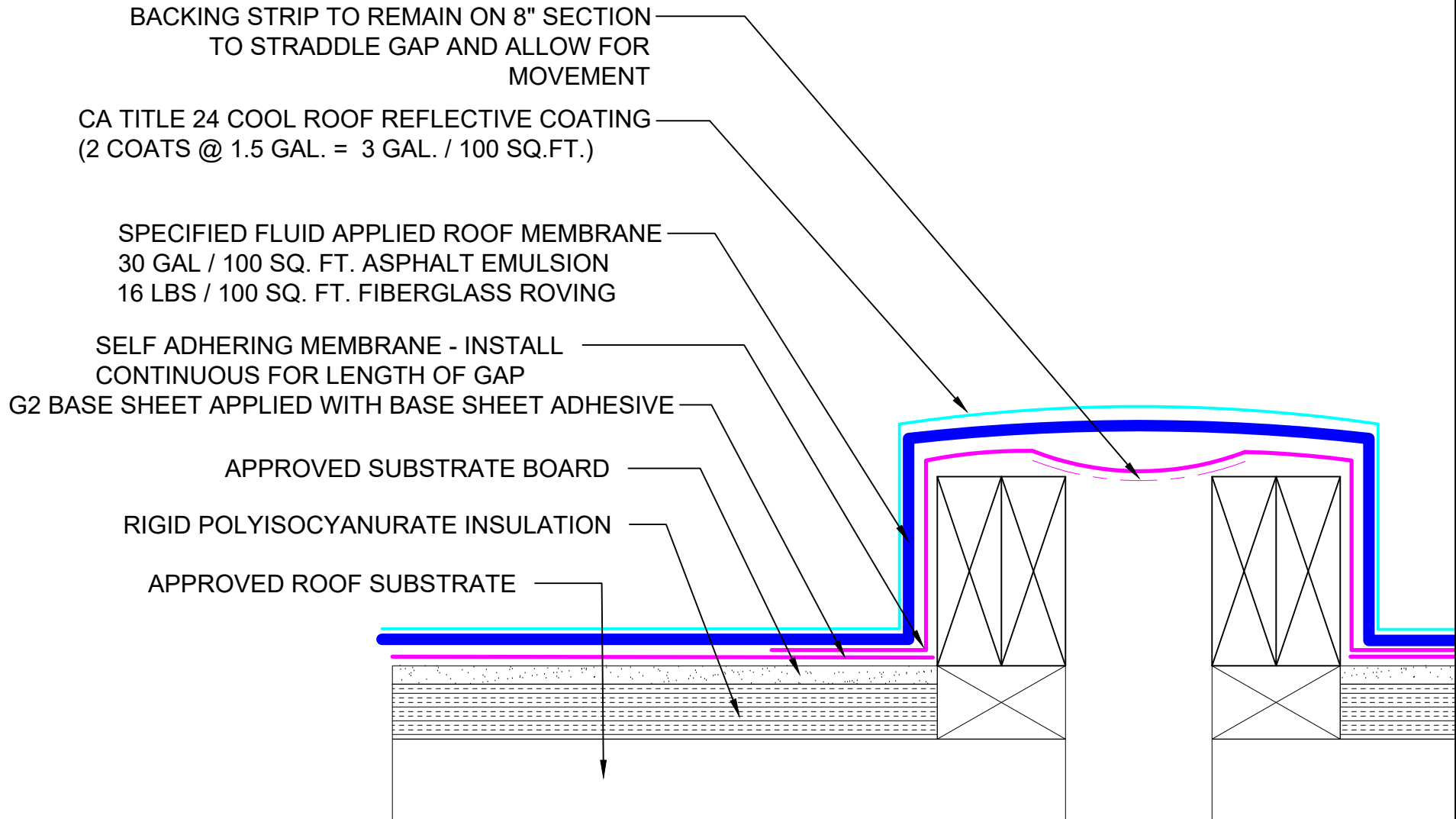
CONTRACTOR:

APPROVED BY:
 MJ

INSTALLED BY:
 TBD

DATE:
 3/26/25

SCALE:
 6" = 1'-0"



Roof System:

I-1B-16-30-A

WEATHERWELD
 ROOFING MADE SIMPLE
 A DIVISION OF LIQUIFORM TECHNOLOGIES, INC.

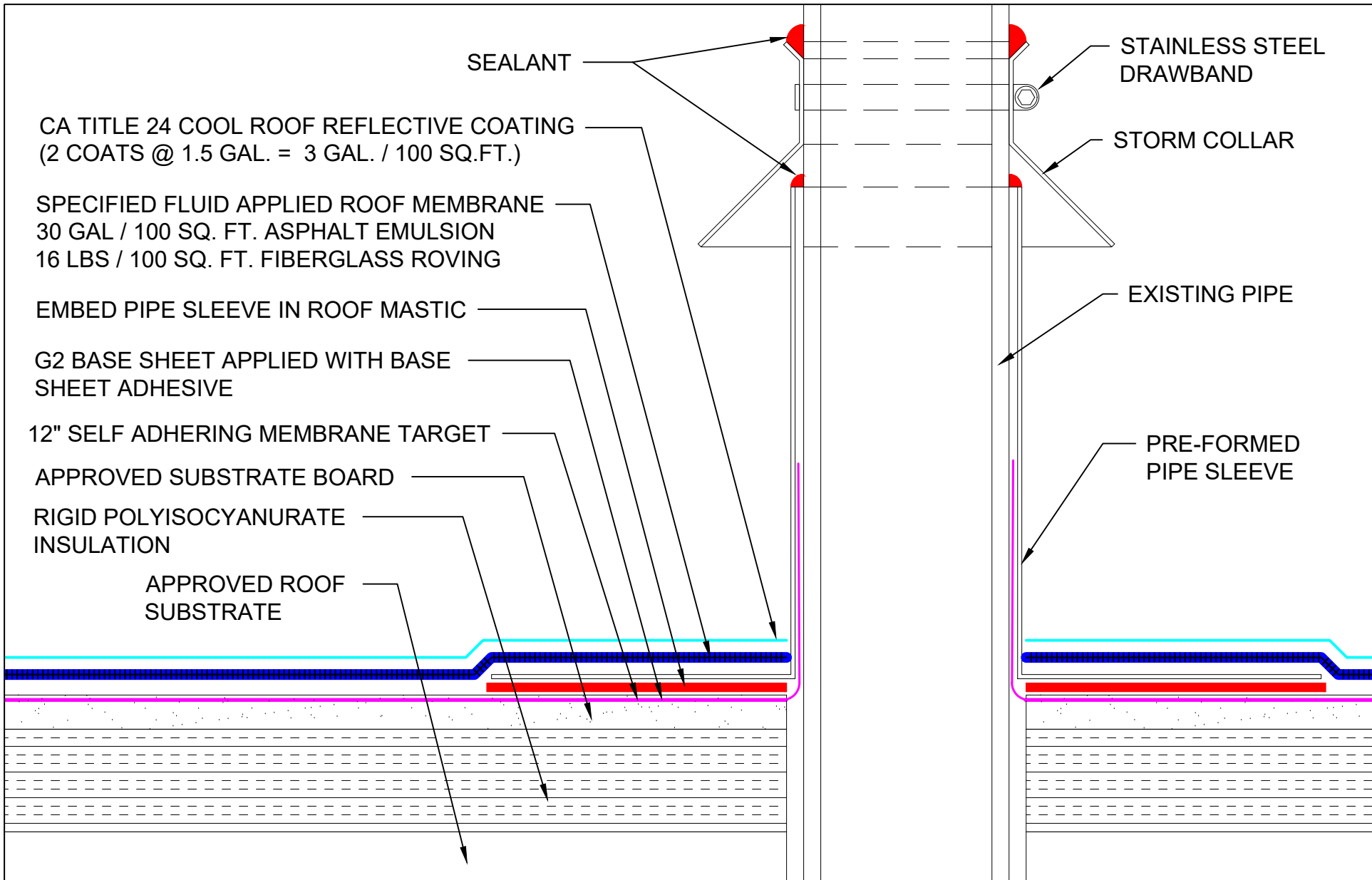
9757 7th Street, Suite 803
 Rancho Cucamonga, CA 91730-5297
 (888) 440-3224 | www.weatherweld.com

DRAWING TITLE: **MODULAR CLASSROOM JOIN DETAIL**

DETAIL NUMBER: **404**

PROJECT:

DRAWN BY: RW	CONTRACTOR:		
APPROVED BY: MJ	INSTALLED BY: TBD	DATE: 3/26/25	SCALE: 3" = 1'-0"



CA TITLE 24 COOL ROOF REFLECTIVE COATING
(2 COATS @ 1.5 GAL. = 3 GAL. / 100 SQ.FT.)

SPECIFIED FLUID APPLIED ROOF MEMBRANE
30 GAL / 100 SQ. FT. ASPHALT EMULSION
16 LBS / 100 SQ. FT. FIBERGLASS ROVING

EMBED PIPE SLEEVE IN ROOF MASTIC

G2 BASE SHEET APPLIED WITH BASE SHEET ADHESIVE

12" SELF ADHERING MEMBRANE TARGET

APPROVED SUBSTRATE BOARD

RIGID POLYISOCYANURATE INSULATION

APPROVED ROOF SUBSTRATE

SEALANT

STAINLESS STEEL DRAWBAND

STORM COLLAR

EXISTING PIPE

PRE-FORMED PIPE SLEEVE

Roof System:
I-1B-16-30-A



9757 7th Street, Suite 803
Rancho Cucamonga, CA 91730-5297
(888) 440-3224 | www.weatherweld.com

PROJECT:

DRAWING TITLE:
PIPE PENETRATION FLASHING

DETAIL NUMBER:
501

DRAWN BY: RW	CONTRACTOR:		
APPROVED BY: MJ	INSTALLED BY: TBD	DATE: 3/26/25	SCALE: 6" = 1'-0"

CA TITLE 24 COOL ROOF REFLECTIVE COATING
(2 COATS @ 1.5 GAL. = 3 GAL. / 100 SQ.FT.)

SPECIFIED FLUID APPLIED ROOF MEMBRANE
30 GAL / 100 SQ. FT. ASPHALT EMULSION
16 LBS / 100 SQ. FT. FIBERGLASS ROVING

SELF ADHESIVE MEMBRANE HEATED AND
FORMED TO BOTTOM OF DRAIN BOWL

APPROVED SUBSTRATE BOARD

G2 BASE SHEET APPLIED WITH
BASE SHEET ADHESIVE

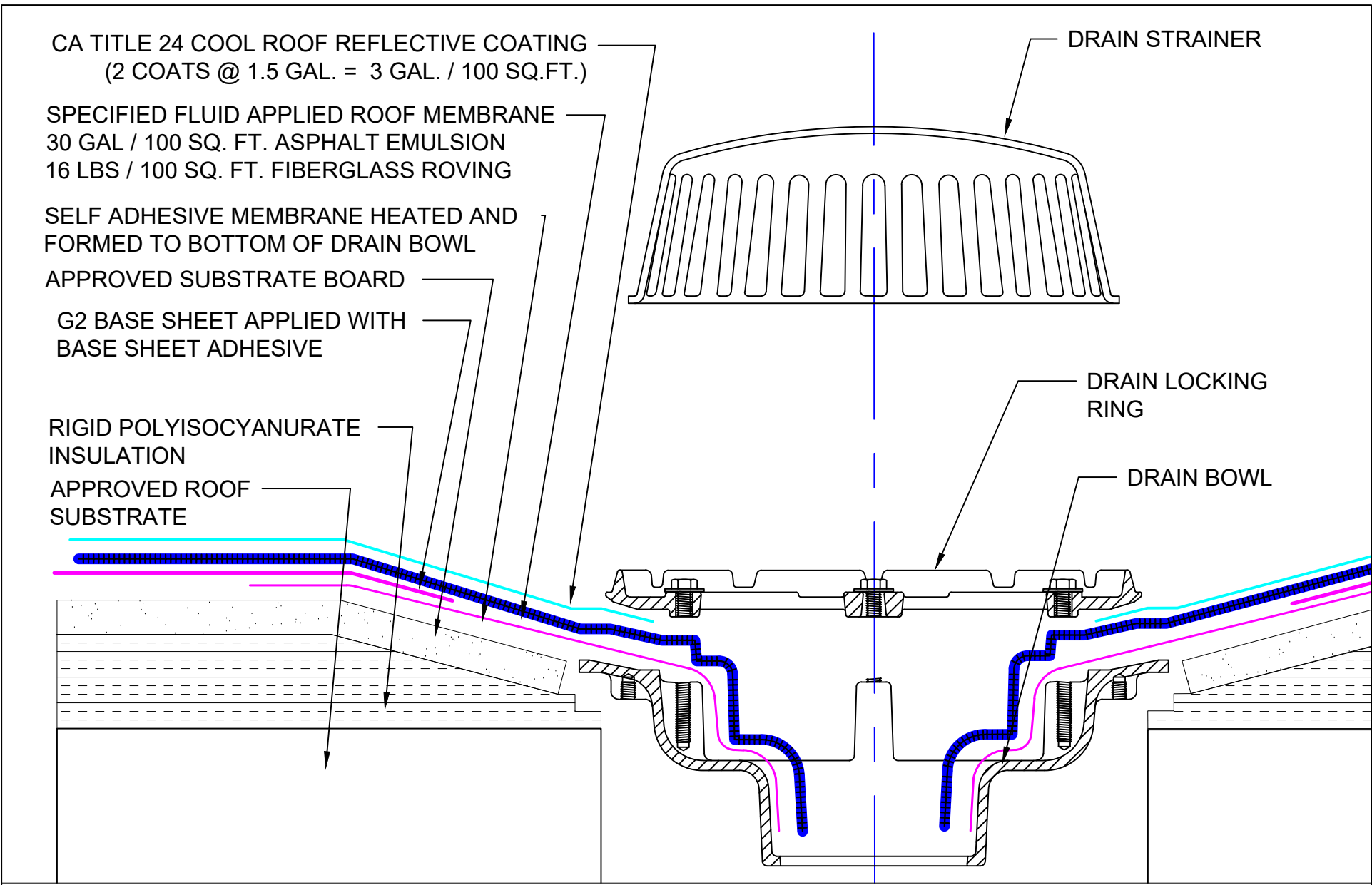
RIGID POLYISOCYANURATE
INSULATION

APPROVED ROOF
SUBSTRATE

DRAIN STRAINER

DRAIN LOCKING
RING

DRAIN BOWL



Roof System:
I-1B-16-30-A



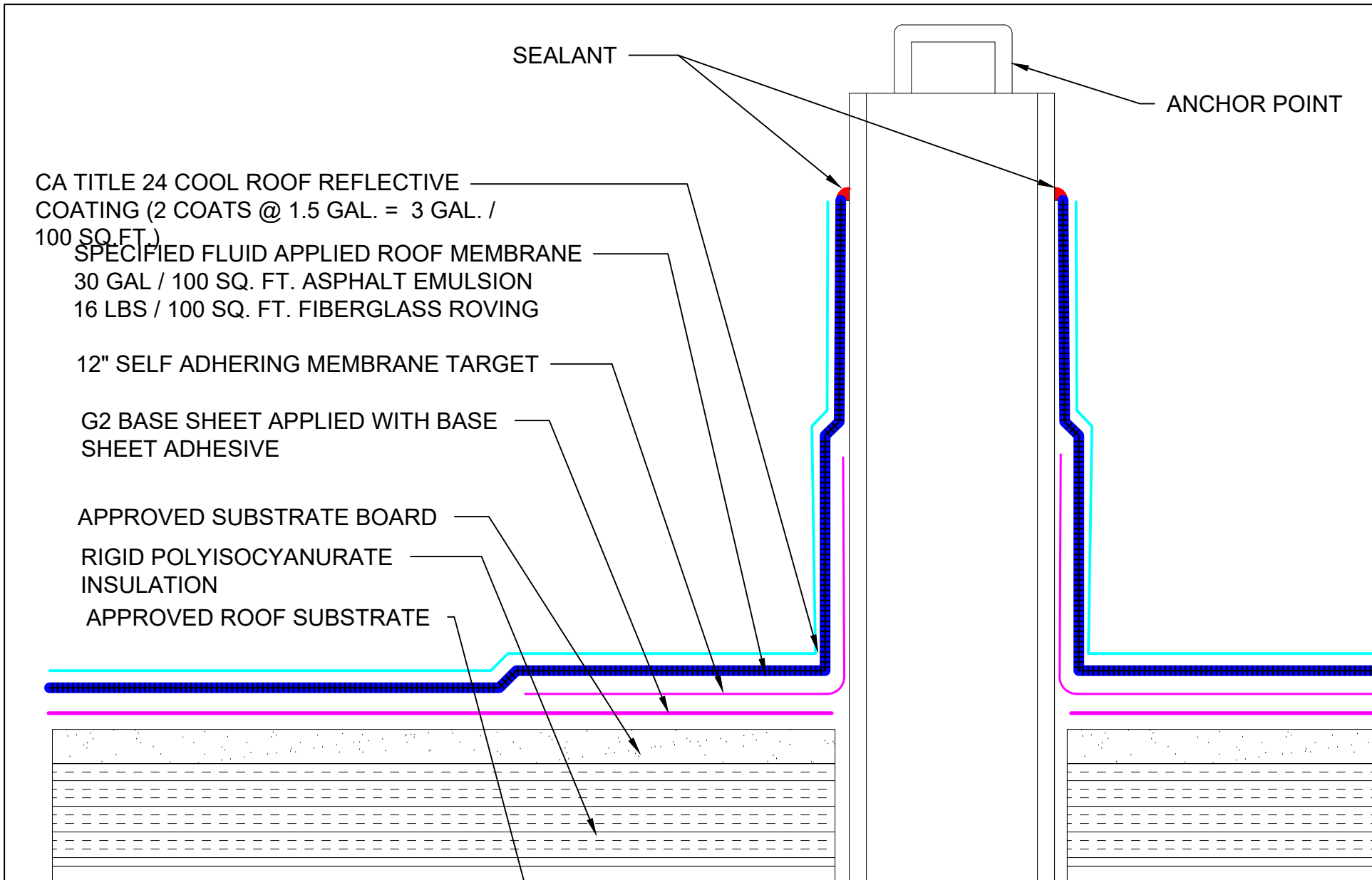
9757 7th Street, Suite 803
Rancho Cucamonga, CA 91730-5297
(888) 440-3224 | www.weatherweld.com

PROJECT:

DRAWING TITLE:
DRAIN DETAIL

DETAIL NUMBER:
502

DRAWN BY: RW	CONTRACTOR:		
APPROVED BY: MJ	INSTALLED BY: TBD	DATE: 3/26/25	SCALE: 6" = 1'-0"



Roof System:

I-1B-16-30-A

WEATHERWELD
ROOFING MADE SIMPLE
A DIVISION OF LIQUIFORM TECHNOLOGIES, INC.

9757 7th Street, Suite 803
Rancho Cucamonga, CA 91730-5297
(888) 440-3224 | www.weatherweld.com

DRAWING TITLE: **ROOFTOP SAFETY ANCHOR**

DETAIL NUMBER: **504**

PROJECT:

DRAWN BY: **RW**

CONTRACTOR:

APPROVED BY: **MJ**

INSTALLED BY: **TBD**

DATE: **3/26/25**

SCALE: **6" = 1'-0"**